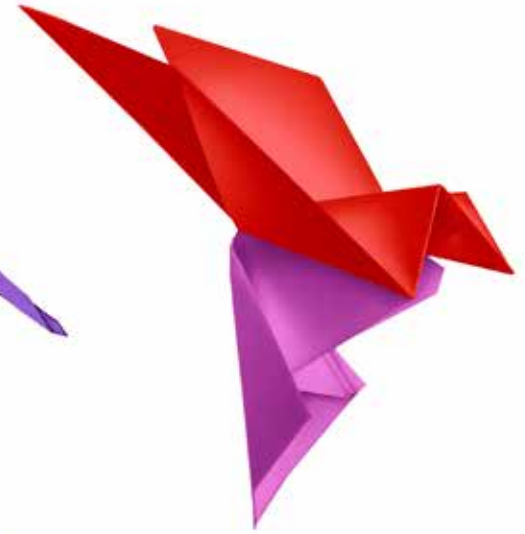


TRANSFORMATION



**Children's
Home
Society**

OF SOUTH DAKOTA



OUR MISSION

To prevent, treat and heal trauma.

OUR VISION

A world that stands up to trauma where all people are safe, healthy and resilient.

OUR VALUES



We are better together.



We choose kindness.



We are tenacious.

STAY IN TOUCH

Please add Children's Home Society and Children's Home Shelter for Family Safety as friends on your social media accounts. And feel free to comment, like and share!



FACEBOOK:

facebook.com/CHSSD
facebook.com/CHSShelterforFamilySafety



INSTAGRAM:

instagram.com/chssdorg



LINKEDIN:

Children's Home Society of South Dakota
Children's Home Shelter for Family Safety

Welcome to Our 2024 Annual Report

Since I joined Children's Home Society (CHS) in 2019, every year has been more remarkable than the last. And at this very moment, CHS is in the midst of profound transformation.

- We are planning our new Rapid City campus, where all CHS Black Hills facilities will be located. It's on the former National American University site. You will start hearing about our plans soon.
- Construction of the new dining hall/kitchen on the Sioux Falls Children's Home campus continues. When complete, it will be a comfortable, light-filled environment for children and staff.
- We are reviewing our model of care and preparing to earn COA credentials, developed specifically for human service organizations.
- Leadership and staff are learning about the Science of Hope. As an evidence-based theory, it brings an important component to trauma-informed care.

CHS is changing, as we have since our founding in 1893. Within these pages, I hope you'll see how CHS, in turn, transforms others. Our community includes clients, staff, volunteers, partners and donors, all of whom are transformed by CHS—and by one another.

Lastly, you'll find a piece of loose origami paper at the very back of this publication, along with instructions for folding it into an origami paper swan. We encourage you to follow the directions and contribute your swan to a unique, statewide community art project which will be on display first in Sioux Falls in the new dining hall and at Shelter for Family Safety, and next in Rapid City.

The swan is our symbol of hope, and as it rises, hope also rises and our spirits soar.



MICHELLE LAVALLEE
CHIEF EXECUTIVE OFFICER,
CHILDREN'S HOME SOCIETY



See Michelle Lavallee and Stacey McMahan of Koch Hazard Architects discuss the origami project at chssd.org/video or scan the QR code.



JOIN THE FOLD

At Children's Home Society, art holds a special place in our hearts. For the people we serve, creating art can help with identifying and expressing feelings. Gillian Spiva, Art Teacher at Black Hills Children's Home, quotes artist Georgia O'Keeffe.

"I found I could say things with color and shapes that I couldn't say any other way – things I had no words for."

"Art is a voice for everyone, but especially victims of trauma who feel like their voices have been silenced," says Gillian.

The origami swan on the cover of this annual report symbolizes the healing and hope that help people transform their lives. This is what CHS brings to those we serve. And we're hoping the communities we serve can benefit the same way through participating.

"As a community, it would be really beautiful to have everyone work together to create something," says Gillian. "If I make one paper swan, it's going to be the size of my palm. But if we all make paper swans together, then you're going to see a whole flock of paper swans."

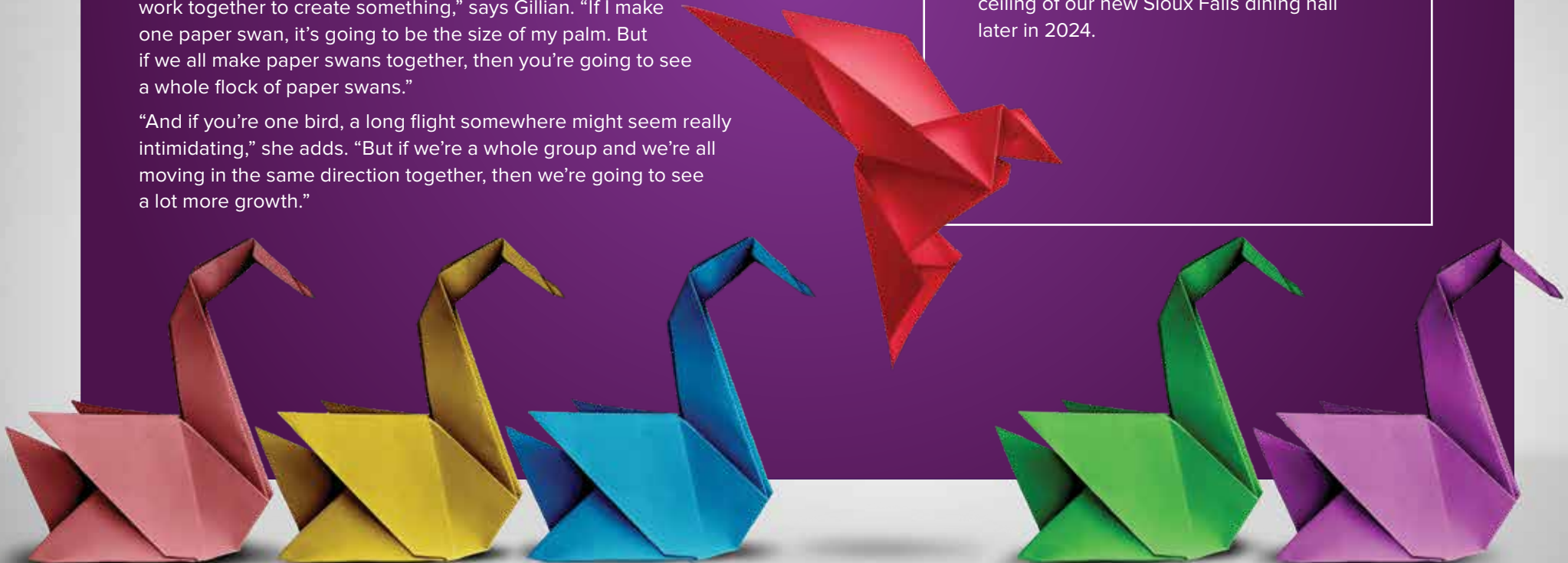
"And if you're one bird, a long flight somewhere might seem really intimidating," she adds. "But if we're a whole group and we're all moving in the same direction together, then we're going to see a lot more growth."

HOW YOU CAN HELP

We invite you to **JOIN THE FOLD**—to create an origami swan for a community art project. Inside the back cover of this annual report, you will find two pieces of origami paper. You'll also see a diagram and a link to a brief instructional video.

Please send your completed swan (and a donation, if you are so moved) in the envelope provided.

The final project will include more than 2,500 paper swans suspended from the ceiling of our new Sioux Falls dining hall later in 2024.



CHILDREN'S HOME SOCIETY
Board of Directors 2023-2024



Deb Soholt
Sioux Falls
PRESIDENT



Jack Marsh
Sioux Falls
VICE PRESIDENT



Gina Hopkins
Sioux Falls
TREASURER



Dustin Morrison
Rapid City
SECRETARY



Sally Anderson*
Mesquite, TX



Matt Benne
Rapid City



Jim Berman
Sioux Falls



Darla Crown
Rapid City



Paulette Davidson
Rapid City



Tim Dougherty
Sioux Falls



Heath Ducheneaux
Kyle



Steve Flanery
Rapid City



Lafawn Janis
Rapid City



Laura Johnson
Reva



Melissa Johnson
Sioux Falls



Amy Koenig
Rapid City



Eric Lee
Rapid City



Luke Lindberg
Harrisburg



John Nooney
Rapid City



John Rozell
Sioux Falls



Jim Schmidt
Sioux Falls



Greg Schweiss
Rapid City



Scott Scofield
Sioux Falls



Chirag Shukla
Sioux Falls



Scott Sletten
Sioux Falls



Carolynn Stavenger
Sioux Falls

*Sally Anderson is an honorary member, and the great-great-granddaughter of Children's Home Society co-founder Elizabeth Sherrard.

As President of the CHS Board of Directors, the major goals during my term are to:

- Begin the transformative governance work needed to become the exceptional, purpose-driven board that assures the implementation of the CHS mission.
- Shepherd the process of creating the new Rapid City campus to meet our clients' needs today and decades into the future.
- Shine light on the great outcomes we see daily at CHS.

Social consciousness is when together we are aware of the difficulties and hardships within our society. CHS is an organization that magnifies our social consciousness regarding vulnerable children and families. It's a topic that can feel overwhelming and unsolvable. But I believe this heightened awareness can be transformed into a shared moral imperative, compelling all of us to help children and families heal.

I consider it an honor to be part of this important work. I hope you will join us—through volunteering, donating, or making origami swans.

DEB SOHOLT
PRESIDENT,
CHILDREN'S HOME SOCIETY
BOARD OF DIRECTORS



What's better than watching your favorite team play?

Watching the game with a buddy.
Or two, or three. Or 10,000.

Sharing an event, experience or process is powerful. We can not only get things done faster, but we can also build important relationships along the way. In fact, that kind of collaboration and cooperation is the cornerstone of a strong community.

That's why it's so satisfying to see people come together to help fund a nonprofit project. Contributing to help build the new Children's Home Shelter for Family Safety was completely voluntary. Yet folks in Sioux Falls and the surrounding areas felt that helping victims of domestic violence was an important need—and they made their donations.

Those of us on the Foundation Board recognize that today, everyone who contributed to the Shelter project feels pride.

And they feel a connection both to the other supporters and to something greater than themselves. We know the upcoming renovation project in the Black Hills will have that same impact.

This is an exciting time to be part of Children's Home Society. We are transforming our clients' lives—and bringing people together to strengthen communities.



BOB BAKER
PRESIDENT,
CHILDREN'S HOME FOUNDATION
BOARD OF DIRECTORS

CHILDREN'S HOME FOUNDATION
Board of Directors 2023-2024



Bob Baker
Sioux Falls
PRESIDENT



Lori Lewison
Sioux Falls
VICE PRESIDENT



Bobby Sundby
Rapid City
TREASURER



Dennis Aanenson
Sioux Falls



Julie Anderson Friesen
Sioux Falls



Greg Blomberg
Sioux Falls



Kim Burma
Sioux Falls



Marty DesLauriers
Sioux Falls



Diana Dufur-Day
Hill City



Marty Jackley
Pierre



Bill Lindquist
Sioux Falls



Val Mickelson
Sioux Falls



Molly Peterson
Brandon



Jill Weisser Pecoske
Sioux Falls

Directors Emeritus: Board members who attain Director Emeritus status have met all three of the following requirements:

- served six or more years as a CHS Board Member
- served six or more years as a CHF Board Member
- served as President of either Board

DIRECTORS EMERITUS

Julie Anderson Friesen*
Lynne Byrne
John Brewer
Gary Brown
Jeb Clarkson
Steve Egger
Tim Hamel

Phil Helland
Blake Hoffman
Bob Hoover
Gary Jensen
Deanna Lien
Helen Madsen
Royal (Mac) McCracken
Tim Meyer

Linda Mickelson
Graham
Rob Mudge
T.J. Reardon
George Roberts
John Rozell*
Dave Schmidt
Peg Seljeskog

Carolynn Stavenger*
Pam Taylor Jansa
Gene Uher
Marilyn Van Demark
Doug Wells
Meg Warder

*Current Board Member

At Children's Home Society, transformation drives the work we do every day.

The services we provide at CHS help transform the lives of children and families and our dedicated staff work tirelessly each day to ensure the best outcomes for those we serve.

The idea of transformation also extends to our facilities. The environment where we deliver our services has an impact on the recovery process. So, having up-to-date and trauma-informed designed facilities is crucial.

We have now spent a full year in our newly-built Children's Home Shelter for Family Safety and have seen an increase in the need for services there. We are currently building a new dining hall on our Sioux Falls campus.

Lastly, we recently purchased the former National American University campus in Rapid City. We will do a full, trauma-informed remodel of this facility and move all of our Black Hills services under one roof and into Rapid City. This is a transformational step for CHS in the Black Hills, allowing us to expand current services and add services, like a day school.

All of this is possible because of your volunteerism and generosity.

Philanthropy is so vital at Children's Home Society. Each year we must raise the necessary dollars to ensure we can offer our services at a high level. This year, philanthropy needs to account for 22% of our total budget.

The children and families we serve are experiencing some of the toughest times and circumstances of their lives. Our work gives them hope and the expectation that things can improve and turn out for the better. Your generous support helps facilitate these much-needed changes.

We are so thankful for each one of you. Every gift you make has a transformative impact.



JON MAMMENGA

CHIEF PHILANTHROPY OFFICER,
CHILDREN'S HOME FOUNDATION

See Board Member Dustin Morrison and Development Director Kara Flynn discuss CHS's plans for the new Black Hills campus at chssd.org/video or scan the QR code.



CHS EVENTS IN 2024

RAPID CITY

Making a Difference for Generations

Saturday, March 2
Holiday Inn Downtown Convention Center
Theresa Schreiner – 605.393.4297

11th Annual Kieffer Sanitation

Trash Can Open
Friday, June 7
Golf Club at Red Rock
Theresa Schreiner – 605.393.4297

35th Annual Rotary Club of Rapid City Rushmore Golf Tournament

Monday, July 29
Arrowhead Country Club
Theresa Schreiner – 605.393.4297

Jon Crane CHS Benefit Auction

Friday, September 20
Arrowhead Country Club
Theresa Schreiner – 605.393.4297

SIOUX FALLS

Drive Out Domestic Violence – Fueled by Vern Eide Motorcars

July 2024
Staci Kropuenske – 605.330.7387

Caring For The Kids Banquet

Sunday, August 4
Sioux Falls Convention Center
Erica Krohn – 605.965.3125

Caring For The Kids Golf Tournament

Monday, August 5
Country Club of Sioux Falls
Erica Krohn – 605.965.3125

Gift Wrap Booth

December 2024
Empire Mall
Staci Kropuenske – 605.330.7387

TRANSFORMING A CHILD'S WORLD



◦ Jaycean Comes Home

Note: This story is written as a compilation of emails, conventional narrative and direct quotes.

**Email from Sue Andrews,
Therapist, Black Hills Children's Home
February 12, 2024**

Jaycean was with us from **August 2020**, when he was 7 years old, **until March 2023**; I was his therapist. He was referred by the Child Protection Services (CPS) office in Rapid City.

The first time Jaycean was in Child Protection Services (CPS) custody, it was the result of physicians being concerned about his health issues. As an infant/child, Jaycean was hospitalized many times with respiratory distress and intubated at least one time. He also had many other medical issues.

His mother's parental rights were terminated. Jaycean lived with his dad, but when Dad went to prison, Jaycean began living with various relatives in unstable environments. Before long, CPS took custody of Jaycean again.

In foster care, Jaycean was defecating/urinating outside of the bathroom, was destructive, was up during the night making messes, made sexual gestures and held a child's head under water in a wading pool. When Jaycean needed more help than foster care could provide, he was referred to Black Hills Children's Home (BHCH).

Jaycean has Down Syndrome and cognitive deficits. He had difficulty expressing himself when he arrived but made gains. He needed prompting and assistance with many tasks, yet again made significant progress. Everyone at BHCH knew Jaycean and was very attached to this little boy.

Single parent Kelly Keiser of Sioux Falls had adopted three boys—Chris, Jaren and Noah—with varying special needs. She wasn't planning to foster or adopt more children. But when she learned about Jaycean, she wanted to get to know him. She talked to her boys and they agreed that they should meet Jaycean.

They began sending cards to Jaycean and had several video calls with him. Finally the family made a trip to Rapid City to visit him at Black Hills Children's Home. And then they knew they wanted to bring him home. After several months, Jaycean was discharged and went to live with the Keisers in Sioux Falls.

Continued on page 8





**Email from Kelly,
March 26, 2023**

He is doing so well... We had state basketball tournaments all weekend and even though he wasn't able to compete, he enjoyed making friends everywhere we went and cheering for the big boys. Pretty sure he also already has "Grandpa and Grandma" wrapped around his little finger, too.



**Email from Kelly,
May 14, 2023**

Just a quick note to let you know Jaycean received his package and was so excited for both the Barbies and the candy...lol. [Jaycean loves Barbies!]

Tonight he got to participate in the Torch Run for Special Olympics, because Jaren is an official runner for the Torch Run this year. He had a blast!



**Email from Kelly,
September 15, 2023**

A quick update. I was able to visit with the attorney this week, and we will soon have a court date to make everything official. We can't wait! Jaycean is loving middle school and making friends.

He is also currently participating in bowling and softball with Special Olympics and has made some friends there as well. He is just a sweetheart...He and Noah decided they

needed their faces painted like zombies. They are both super excited for Halloween.



**Email from Kelly,
November 12, 2023**

Jaycean is continuing to thrive. Everything is going great! He is just the greatest guy, and such a blessing. We are so excited for everything to be official!... In school he gets to help with the Coffee Cart; he and his classmates sell coffee to the teachers.

He recently got first place in his division in Special Olympics

Bowling. Now we are on break for the holidays! He loved Halloween and is already asking about Christmas...he is sure to get spoiled!



Email from Laurie Brosz, DSS
Sent: Monday, November 20, 2023
Subject: Adoption Announcement

I am so excited to announce Jaycean was adopted today! This special boy has been in DSS custody since 2020 and was placed at the Children's Home until March 2023.

Kelly had closed her license after adopting her other sons but when she saw Jaycean on AdoptUSKids, she reopened it just so she could provide Jaycean a forever home.

The first night Jaycean spent in Kelly's home, Jaycean and one of his new brothers discovered they both had Harry Potter pajamas and they have been best friends ever since. Since moving into Kelly's home, Jaycean has been involved with the Special Olympics where he participates in softball and swimming. He recently also participated in the Hero Pull where he got to help firemen pull a firetruck!!

Interview with Kelly
February 8, 2024

"Adopting Jaycean was a family decision. It's been just a great year, things are going really well.

"At first, he was really scared anytime we went to visit a new house. He was afraid to go through the door; I would have to carry him. Now he's progressed to a point where he takes a couple of big breaths, and we talk about how it's a safe place. We talk about what we're

going to see inside, take a few more big breaths, and through the door we go. Then within a minute or so he's running around playing and happy as all get out rather than being scared and clinging to me. So he's feeling safer and more comfortable, which is wonderful.

"Also, Jaycean is an absolute social butterfly. There's not a person in the world that we interact with that isn't his best friend. He calls all the coaches by name, has many friends, he's just so fun.

"The kids are all so happy to see him and it's so heartwarming. I walked into the school and here comes Jaycean and everybody is giving him high fives—and they're excited to see him because he's such a fun, happy guy. There's so much genuine joy, and he's forming those bonds and relationships with people. It's just so great."

Through residential care at CHS, and now through the love and support of his new family, Jaycean has been transformed into a delightful, happy little boy. And Jaycean, in turn, transforms those with whom he comes in contact.



A Rose Branch on the Family Tree

by Jordan Hofer,
Teacher at Loving School,
Sioux Falls Children's Home

In 1896, a five-year-old orphan named Rose was placed at Children's Home Society of South Dakota.

One hundred twelve years later, in 2008, Rose's great-grandson—Jordan Hofer—joined Children's Home Society as a teacher.

Rose was a mystery to Jordan and his family. Who was she exactly? "How had she come to be at Children's Home Society? What events had unfolded that had brought her to an orphanage at such a young age?" Jordan wrote.

Recently, Jordan's father decided to discover the truth. This is Rose's story, written by and published with the permission of Jordan Hofer.

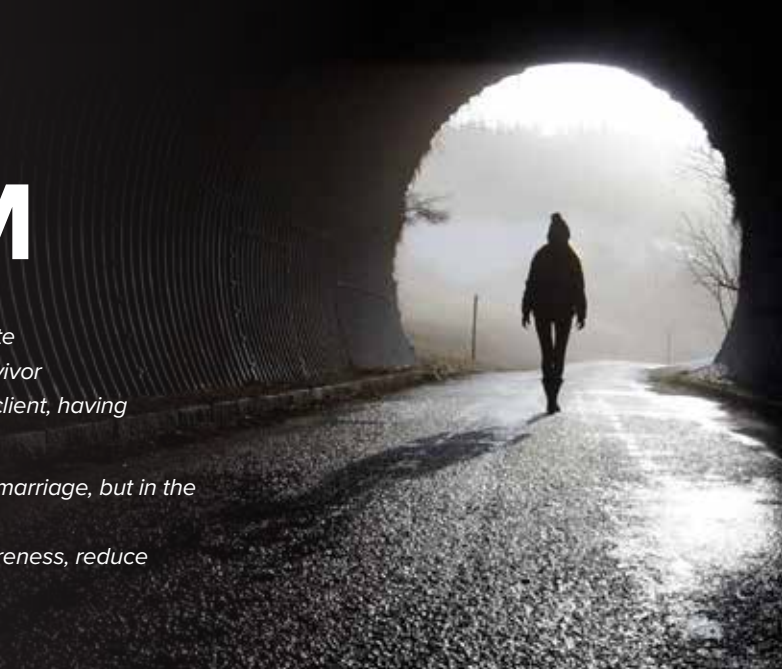


Read the whole story.
chssd.org/news/articles-and-information

THE ROAD TO FREEDOM

Transformation is often slow. And it can be painful. Crisis Advocate Linn Nelson at Children's Home Shelter for Family Safety is a survivor of more than 20 years of domestic abuse. She's also a previous client, having attended a support group at the old Children's Inn location.

*In 2022, Linn spoke of her harrowing experience, not only in her marriage, but in the divorce process at **Take Back the Night** at the University of Sioux Falls. She has allowed us to share her story to spread awareness, reduce shame and offer hope to other survivors of abuse.*



It takes Herculean strength to leave abuse.

Unfortunately, the odds of successfully leaving abuse permanently were stacked against me. I lived a lifetime of abuse. I had complex PTSD, and was physically and mentally sick when I finally called the Compass Center. That phone call alone defied the odds. Then suddenly I was thrust into the most dangerous, overwhelming and confusing time for any survivor, which is when leaving the abuser. I had to figure out how to keep my ex from breaking into the house, try to protect and support my children through the trauma, and navigate the complexities of the legal system.

I remember sitting at the school parking lot after trying to fill my car with gas—only to find out my ex had canceled another bank account. The utility company had called earlier to let me know my ex was closing the account, and I would lose power soon. I had a call in to a locksmith because my ex was threatening to enter the house.

My children's future was dependent on my ability to not be completely broken—but I was. My ex spent a total of 25 years trying to convince me I was crazy and from outward appearances it worked. My daughters had lived through his triangulation. He undermined my credibility and authority as a parent in front of our children. If our daughter threw a temper tantrum, he would blame me. By the time I left the abuse, our daughters had little faith in me. My children were convinced I was unable to survive as a single parent or even as a functioning adult.

Divorcing my abuser required that I meet for 15 hours over the holidays with my ex and a clinical psychologist. Half of that time was spent at the psychologist's office with my daughters and the man who systematically tried to destroy my career, my relationships with anyone close to me, and my sense of self.



LINN NELSON

SURVIVOR AND
CRISIS ADVOCATE,
SHELTER FOR
FAMILY SAFETY

The report from the clinical psychologist, who was recommended by my ex's attorney, was factually wrong in significant ways. It read much like the distorted version of reality I was gaslighted to believe throughout my marriage.

The clinical psychologist did not recognize my symptoms of PTSD. She never contacted the counselor who had provided years of therapy for my daughters and me. She left out my ex's felony DUI, hit and run, and attempted suicide when his first wife divorced him. There was no mention of his drunken threat of suicide when I tried to leave shortly after we met. She dismissed the significance of the incident when my ex pinned me up against the wall with his hands around my neck while I was holding our infant daughter in my arms. She failed to mention that he beat our dog so severely that it prompted a neighbor to call animal control.

There was nothing about how he monitored my cell phone and would interrogate me if he saw a phone number he didn't recognize or if I spoke too long. We lived on

the other side of the state from my family for the first 10 years of our marriage. I wasn't allowed to make long distance calls, so my sister secretly sent me money to call her. That was never discussed. The clinical psychologist had no understanding of all the years I tried to leave but he blocked the doors and stood in front of my car. He would intentionally bump into me as I was making dinner as a way of intimidating me. Her report also neglected to mention that I couldn't park my car in the garage without being reprimanded that I carelessly parked too far to the left or right. She left out how he scolded me for how I operated the garbage disposal, the vacuum and the oven.

I remember thinking how odd it was that I could have a successful 15-year career as a college professor, but he didn't trust me to accomplish the most basic tasks in life. I literally could not go for a walk with him without being criticized for intentionally walking too fast or too slow. Nowhere in the report did it mention that he owned every one of our bank accounts and would wake me up in the middle of the night in a rage when he balanced the checkbook, which inevitably led to chastising me over a purchase or how I categorized the purchase. He constantly reminded me I had failed. He treated me like a child. None of this was mentioned in her report.

The clinical psychologist's evaluation was more destructive to my mental health than any abuse I was trying to escape. It completely destroyed what hope I had left to free my children from

the horror we had lived through. Throughout the 18-month divorce, I learned to accept that nothing made sense to me and trying to comprehend what was happening was going to make me sicker. When the judge dismissed my concerns by stating he had "seen worse," I knew my peace would not be found in the courts.

Shortly after receiving the evaluation, I found myself driving on a dirt road on the edge of town that was littered with discarded chairs and other household items. It was a road people were using as a private dump. This is where I walked my dog on a brutally cold night. I was shaking as the January freeze bit through my coat. I didn't have any fight or hope left. It was then that I first experienced an unexplainable calm. As I was walking, I suddenly realized I was warm. The weeds in the field were sparkling in a way I had never seen before, and I had a sense that my pain was changing. Spiritual healing sounds crazy, but that is what it was.

It has been six years [editor's note: now eight years] since my ex was required by law to leave the house. I am able to be the mother I always wanted to be. My daughters are thriving. We have trusting and healthy relationships. Our house is full of joy and hope. Leaving the abusive relationship was essential for my immediate health and safety, but healing from the deep wounds that motivated me to allow such abuse into my life was even more important and took more time.

I remember when I was standing in my living room in the middle of a severe spring storm. My backyard had flooded and the rain threatened to flood my basement. The strong winds were beating against the house, and roof tiles were ripped off and blowing in the wind. It sounded like the whole roof was being torn apart. It didn't make sense, but I felt completely calm like I had felt on that frozen dirt road months before. Only God could take someone so overwhelmed with PTSD that I was shaking and could barely speak and instill such undeniable and unmovable peace. Throughout the divorce I had this sensation that I was being physically lifted up. It is almost impossible to describe, let alone understand, but somehow I knew something other than myself was holding me up. The world is and always will be broken, but my peace no longer relies on the stability of anything in this world.

Everything I had worked so hard to build and hold together was torn apart. And only then did I find freedom.



Abuse happens among families of all backgrounds and income levels. More than 33% of South Dakota women will experience domestic abuse during their lifetimes. Shame, fear, self-doubt and hopelessness are common feelings experienced by domestic abuse survivors. Linn is proof that hope and faith can overcome these feelings.

To learn more about domestic abuse or to get help, please call the Shelter's crisis line at 605.338.4880.

CHANGE AT THE SPEED OF LIFE

○ Darla Crown, Board Member, Volunteer, Donor and Former Employee

Transformation looks different on each of us.

Throughout her life, Children's Home Society Board Member Darla Crown has been drawn to new challenges. Just hearing about the variety of jobs and activities she has experienced can give you whiplash!

And with each success, her world shifts, expands and transforms.

Darla grew up a tomboy on a Badlands ranch near Wall, SD. After high school she joined the Army to take advantage of the GI bill to pay for her college education. Upon enlisting, she wanted to join the military police, but in 1973 that wasn't an option for women, and she

was assigned to a personnel management specialist position.

Before long, Darla was recruited to be an undercover narcotics agent in the Army. She kept her original position

as her cover job. Darla was part of drug busts, including a large ring that included her boss and two coworkers; she went into hiding at that point because her cover was blown and her life was in danger.

After Darla's military service ended, she returned to South Dakota, got married and went to college and graduate school. She taught school in Wall for five years, became a school counselor and then an outpatient clinic counselor.

Darla changed lanes again to work in membership sales at the Rapid City Chamber of Commerce in 1995. A member of the Army National Guard, she was activated in 2004 to serve a year as a medical liaison officer when troops went to Iraq. Next, she joined Children's Home Society as a Development Officer. After five years, Darla was selected as the first female State Command Chief Warrant Officer for the South Dakota Army National Guard, the position from which she retired.

Unsurprisingly, Darla enjoys motorcycle riding, race car driving and is a huge NASCAR fan. She's a crack shot with rifles and handguns. Darla serves on the Central States Fair Foundation Board, Veteran's Court, Rushmore Rotary Board, the ESGR (Employer Support of Guard and Reserve) and on the Liturgy Committee at Blessed Sacrament Church.



Darla is also a member of the Children's Home Society Board of Directors.

Darla's softer side

Although Darla and her husband, Doug, had no children, they developed strong ties with a deeply traumatized child, Kenny, who was in residential care at CHS for many years. They became foster parents and provided mostly respite care for a number of children, including Kenny.

Darla and Doug walked through extraordinarily trying times with Kenny, now 39, and continue to be his surrogate parents. It's a sad story because of Kenny's many issues and difficulties. Yet it's a happy story because of the meaningful relationship between them.

Darla reflects on her connections to CHS—as a board member, employee and care provider—which began through her involvement with Kenny.



“It has really transformed me,” she says. “The relationship with Kenny and learning the whole process that children go through, and the services that Children’s Home provides has helped us understand what it’s like to be a parent—and a parent of a child with challenges.”

“Another way it’s transformed me is that it’s calmed me down—so I’m not always going 100 miles an hour,” Darla says. “Being more patient, knowing things don’t happen overnight. Taking care of these kids takes a lot of patience.”

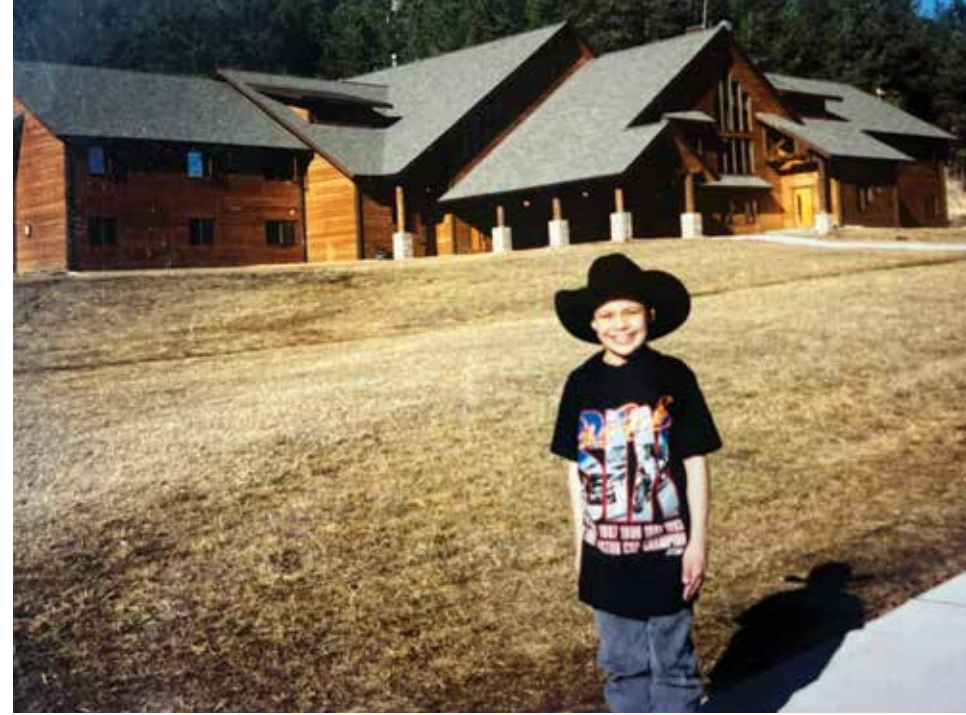
Another transformation for Darla came in her understanding of CHS’s challenges.

“I have such an appreciation for the staff, and how hard everybody works to take care of the kids—but also raising the money to keep providing those services.”

Darla has in turn helped transform CHS through her work, her volunteering and her service.

“I’m proud of that,” she says. “Even after I quit working there, I would find myself saying, ‘we’re doing this, or we’re having this event.’ I would refer to Children’s Home, like I was still there. Like it’s part of me.”

It’s true. CHS is part of Darla and Doug. It’s part of Kenny. And it’s part of everyone the organization touches.



Darla, Doug and Kenny over the years.





STORIES OF TRANSFORMATION: DALLAS CHIEF EAGLE

Late last year, Sicangu Lakota educator, counselor and hoop dancer Dallas Chief Eagle spent a week at Black Hills Children's Home and a week at Sioux Falls Children's Home as an artist-in-residence.



During an interview, he told us this story.

DALLAS CHIEF EAGLE
SICANGU LAKOTA EDUCATOR,
COUNSELOR AND HOOP DANCER





There was this one little girl—there was a lot of violence in her home and alcoholism, and it built up in her and she started crying.

And her primary caretaker said, “Don’t be crying around here.”

She went out into the trees and cried out there with no people around. As she was crying, she heard some little crickets making noise near her. And she thought that was amazing: she could cry, and they would sing.

From that day forward, when she cried, she would go to this special place to cry and the crickets would sing. One day, she felt that she needed those crickets at her house, and she made a little cricket mansion out of a matchbox, with walls and little rooms. The little girl went to her special place and found two crickets. She put them in that little box along with part of their nest and she took them home. She put the cricket house under her bed.

It was the little girl’s secret, because she thought if she told anyone at home, maybe they would try to get rid of her crickets. She didn’t have much trust in the people that she lived with.

She kept them under her bed, and they would sing. And one day she looked in there and she saw something moving, *takuskanskan* (something holy moving). She looked closely and there were baby crickets in the box, so she took them back outside to the special place. She must have spent a couple hours letting them go, being careful not to squash any babies.

The girl missed a lot of school because of the problems at home. On her way to school, she sometimes passed the home of an old woman who was a retired schoolteacher. The old woman saw her and invited her over. She wanted to get to know the little girl better.

The grandma invited her over now and then, and the little girl would stop by, and they would visit and spend time together.

The girl had told the grandma about some of her problems at home, but she’d never told anyone about the crickets. So one day she shared her secret about the crickets and, while she spoke, she saw that the grandma had tears flowing down her cheeks.

The grandma said, “Those crickets were there for you when the two-leggeds couldn’t be there for you.” She said, “What I want to do is to adopt you. Have a *hunka* (making of relatives) ceremony and adopt you as my daughter. And we’re going to give you a Lakota name and it’s going to be Cricket Woman. We’re going to have a big ceremony, and later I want you to live with me, too.”

“We’re going to make these arrangements. But in the meantime, let’s go on over to the school. They went to the school and had an IEP meeting and everybody got on board.

In her art classes, she could paint and draw crickets. In music class, she could get a recorder and record crickets and play them back. In the science class,

she could study crickets. The school sent away for crickets for her, too—some rare white crickets. She had terrariums containing crickets that she could keep in her other classes.

Eventually she graduated and was able to live with the grandma. They had the *hunka* ceremony. They had beadwork and quillwork. The grandma had a jewelry box and gave it to the silversmith. He used all the stones in the box and mounted them on this beautiful ring, the most beautiful ring I ever saw.

Cricket Woman earned a doctorate degree in entomology. And she collected crickets; she even had an antique Jiminy Cricket. She had cricket puppets and records and posters and dolls and little gadgets and all kinds of stuff in her study.

As time went on, she learned how we have been killing crickets and insects indiscriminately—with poisons entering our water supply and so forth. She was really interested in protecting the crickets and other insects, but she needed another degree. So she went back to school, became a lawyer, and is now working for environmental justice.



 **View the video at chssd.org/video or scan the QR code.**

See how Dallas teaches children using hoop dancing. It all begins with a large stone, Grandpa Rock, the oldest of our ancestors. Dallas guides children through a calming exercise to create a quiet, focused, meditative state—which helps them learn that they can transform their anxiety, anger and pain into stillness. Then they learn hoop dancing and, in the final lesson, become eagles.



Linda Mickelson Graham

GENERATIONS OF LEADERSHIP: THE MICKELSON FAMILY

It's been said that old friends are the best friends, which is just one reason Children's Home Society of South Dakota cherishes the Mickelsons.

The history of South Dakota's prominent Mickelson family and the history of CHS have been entwined since 1955. That's when George T. Mickelson, who was South Dakota Governor from 1947 to 1951, joined the CHS Board of Directors.

At the time, George T. was Chief Judge of the United States District Court for the District of South Dakota. He served in that capacity, and on the CHS Board, until his death in 1965.



George T. Mickelson

More Mickelsons

The second and third Mickelsons to be involved with CHS were George T.'s son, George S. Mickelson, and his wife, Linda. In 1983, Linda joined the CHS board.

Before long, Linda became First Lady of South Dakota when George S. was elected Governor in 1987. Despite a busy official calendar and being the mother of three children—Mark, Amy and David—she remained involved with CHS, continuing her board service for 27 years, until 2010.

Still more Mickelsons

The next Mickelson on the CHS board was Cynthia Hart Mickelson, Mark's wife. Cynthia's parents are longtime CHS friends Jim and Nini Hart. Cynthia was practically destined to become part of

CHS, and she served on the board from 2010 to 2016. And when Mark and Cynthia got married, they requested donations to several nonprofits, including CHS, in lieu of gifts.

Next in line was Val Mickelson, who joined the CHS board in 2023. She is the wife of David, the youngest of George S. and Linda's children.

Philanthropy and civic leadership is a family tradition. "We grew up with the attitude that we were fortunate and understanding the importance of giving back," says Amy Mickelson.

She offers an example. "I went to college in Washington state on a basketball scholarship. As soon as I graduated, Dad told me to give back, even if it's only \$5 a week."

Mark Mickelson notes that his parents also taught by example. "They were involved in everything," he says. "Just trying to help the community. That's just the way they both were. We didn't really know any other way, honestly."

The champion of CHS fundraising

In addition to helping steer the CHS ship over the years, the family has donated generously. In fact, CHS named the Mickelson Recreation Center at Sioux Falls Children's Home in honor of George and Linda in recognition of the family's long history of volunteering and charitable support. Family members also donated to fund the "Hub" at Children's Home Shelter for Family Safety, named for Linda. It's the heart of the shelter, where crisis workers help survivors of domestic violence staying in the shelter and field crisis calls.

Their donations have been critically important. But the family's leadership and advocacy have also transformed CHS.

“I don’t know if there has been any one person who has been more instrumental in our fundraising than Linda Mickelson Graham,” says Rick Weber, CHS Development Director.

“She has been a tireless volunteer in sharing our story, chairing campaigns and taking multiple leadership roles over the years,” Rick says. “Linda knows so many people throughout South Dakota—and so many people love, respect and admire Linda.”

“My mom knows a lot of people,” says David Mickelson. “And, you know, when she’s passionate about something and talks to people about it, she’s a hard person to say ‘no’ to.”

Linda cares about the mission of CHS. But according to Mark, CHS “also has the benefit of not just a good mission, but really good leadership. And I think when you’re looking to get involved in different types of charities, one of the distinguishing characteristics of Children’s Home has been exceptional leadership.”

He continues. “The leadership at Children’s Home also makes it easy to support because you know that whatever the resources are, whether it’s funds or other gifts, will be used in the best possible way for the overall goal of Children’s Home. We have had complete faith in the leadership, absolutely.”

The gift of transformation

“When I was 27, my mom was recently widowed,” Mark says. “She was in the process of moving to Sioux Falls. And she was very involved in Children’s Home activities, events, invitations, donor solicitations.”

Linda is also a good friend of Dennis Daugaard, who was the CHS Director of Development at the time and later became Governor of South Dakota. She became good friends with Dave Loving, the Executive Director, as well.

“The relationships she had with people at Children’s Home Society were important,” Amy says. “She was close to them, and she loved the work she did.”

“Children’s Home Society has been very meaningful and important to my mom. It gave her purpose during a difficult time in her life,” says Amy. “After her family and faith, it’s probably the most important thing to her.”

In fact, Linda was the key that unlocked the first gift to CHS—and subsequent gifts—from T. Denny Sanford, whose philanthropy has been transformational to CHS on many levels.

“Mom had the relationship with Mr. Sanford and was able to secure a large donation,” says David. “And, you know, that’s been one of her proudest accomplishments.”

“She went with Dennis Daugaard to talk to Denny,” says Rick. “Denny jokes that she’s one of his favorite pickpockets.”

Mark says, “She and Dennis will tell a great story about how they went to visit Denny. Later Denny called and said, ‘I’ve got some good news and some bad news. I’m going to give you a gift, but it’s not going to be the one million dollars that you asked me for. It’s going to be two million.’”

“And they had an event at the Holiday Inn that was the first public event where Denny, announced a charitable contribution. I remember that I attended it because my mom was so excited,” Mark adds.

Mark recalls a time when Linda had talked Denny into having a CHS fundraising event in Scottsdale, Arizona. “She would go down to Arizona in the winter,” Mark says. “She would sit at her kitchen table and open the Sioux Falls phone book—back when we had phone books—and just call people and invite them.”

It’s an exaggeration to say that Linda knew so many people that the city phone book was essentially her personal phone book. But not by much.



Mickelson family: David, Linda, Amy and Mark.

Giving feels good

CHS leaders and staff are profoundly grateful for Linda Mickelson Graham’s friendship. Her passion for the mission and her strong leadership have enabled CHS to help transform the lives of more children and families.

“It was a big part of my mom’s life,” says David. “She’s so proud of the work that Children’s Home does and that she was able to be part of it.”

To this day, Linda cares deeply about CHS. “When we talk about it, she just tears up. Children’s Home means a lot to her,” says Mark.

CHS continues to have an extremely engaged and enthusiastic board of directors. The more involved people become—in our mission, our challenges, and in understanding how they are helping heal the people we serve—the more meaningful it becomes.

“It’s pretty rewarding when you can help make a difference for someone other than yourself,” says Mark.

David articulates Linda’s powerful legacy. “All of us have the ability to help make change that’s positive in our communities,” he says. “We have to try to help where we can.”



Residential Treatment and Schools

Black Hills Children's Home (BHCH) and Sioux Falls Children's Home (SFCH) are psychiatric residential treatment facilities and special education schools for children ages 4-14. We partner with parents and caregivers to serve children with social, emotional and behavioral challenges. Some may have experienced domestic violence, physical or sexual abuse, neglect, or have mental health needs that cannot be met in a home or school setting.

Budget:	\$18,411,576
Charitable Support:	(7%) \$1,236,576

Children's Home Shelter for Family Safety

Children's Home Shelter for Family Safety provides free services for adults and children who are victims of domestic violence, stalking, elder abuse, sexual assault and child abuse or neglect.



Budget:	\$5,466,828
United Way:	(8.4%) \$456,888
Other Charitable Support:	(70%) \$3,824,640

Community Based Services

Therapeutic Foster Care (TFC) serves children of all ages who have moderate emotional and behavioral needs, usually from abuse or neglect.

Wendy's Wonderful Kids (WWK) works to find adoptive families for children of all ages who are considered hard to place.

Adoption Services include therapy, family support, training, case management and referrals.

Family Engagement Services (FES) is a program offering intensive case management and evidence-based interventions and support to children, youth and families at imminent risk of system involvement.

Budget:	\$1,757,316
Charitable Support:	(34%) \$595,656

Prevention Training and Education

The goal of CHS Prevention, Training and Education is to prevent child abuse in South Dakota. Statewide education, trainings and events focus on teaching the public and professionals how to recognize and respond to child abuse, properly handle child abuse disclosures, understand Adverse Childhood Experiences (ACEs) and implement trauma-informed care.

Budget:	\$214,656
Charitable Support:	(71.9%) \$154,272

Child Advocacy Center

The Child Advocacy Center (CAC) serves children who are alleged victims of sexual abuse, physical abuse or who have witnessed violence. CAC provides forensic interviews, support to families and coordinates specialized medical examinations. These services eliminate the need for repeated interviews and examinations by multiple investigating parties. Referrals come primarily through law enforcement and Child Protection Services.

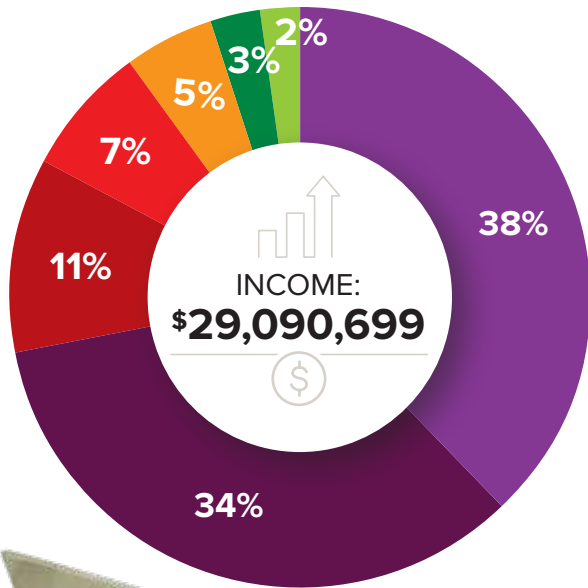
Budget:	\$556,488
Charitable Support:	(58.8%) \$326,988

Bright Start

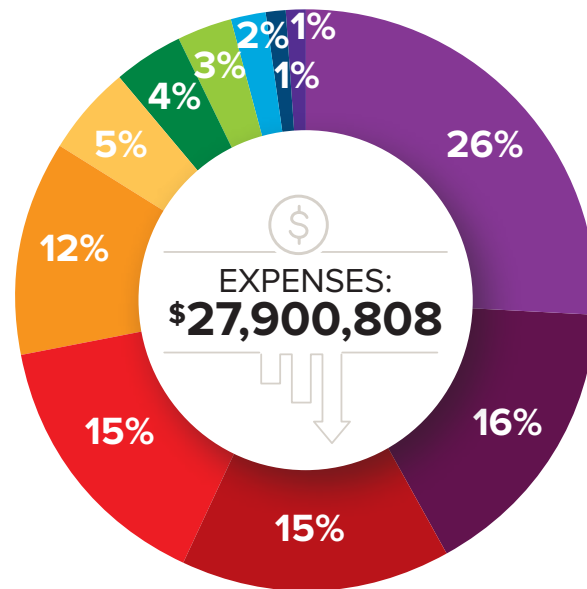
Bright Start, a nurse home visitation program, provides care for families with socio-economic risk factors during pregnancy and up until the child turns two. Nursing services include prenatal, maternal and infant/child health and development assessments and education; and parenting, health, safety and nutrition education.

Budget:	\$1,041,132
United Way:	(25%) 258,000

Children's Home Society: Financial Report FY2023



- Charitable Gifts & Endowment Distribution
- Medicaid
- Govt. Grants, Contracts and Fees
- SD Dept of Education
- School Districts
- United Way for Bright Start & Shelter for Family Safety
- Other



- Sioux Falls Residential Treatment
- Shelter for Family Safety
- Black Hills Residential Treatment
- Administration
- Sioux Falls Education
- Black Hills Education
- Community Based Services
- Bright Start
- Child Advocacy Center
- Prevention, Training and Education
- Fundraising

CHS impacts nearly **16,000 vulnerable children and families annually** from every county in South Dakota. We serve **children of all ages** throughout our six programs.



We serve ages 4–14 in residential treatment. We are the only provider caring for children ages 4-9 accredited by the Joint Commission.



We are the state's **largest children's psychiatric residential treatment facility**—38% of all beds in SD.



We have a **low staff-to-child ratio** to ensure high quality care.



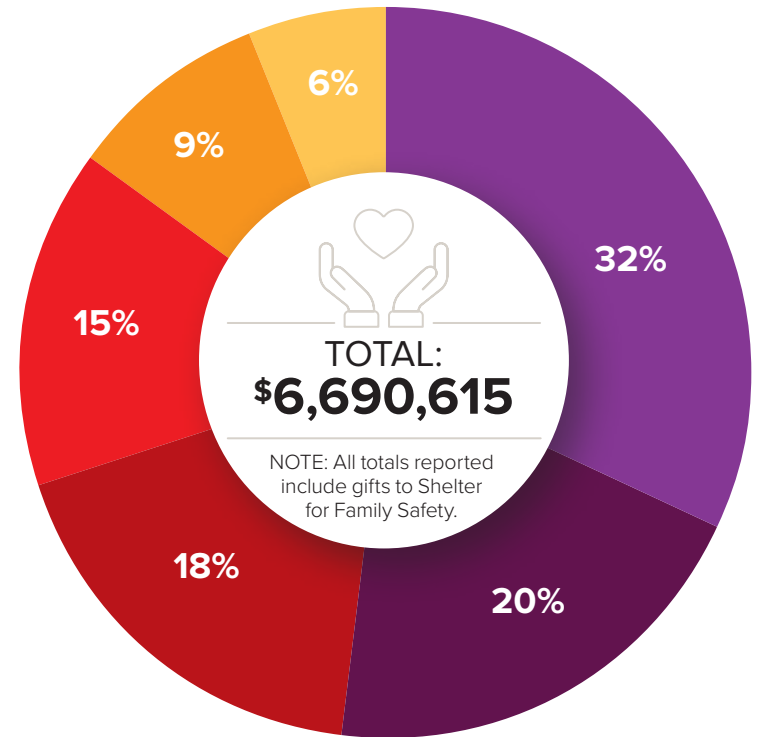
Children's Home Shelter for Family Safety is the **largest domestic violence shelter in South Dakota**, serving more than 3,000 individuals with all services each year.

Children's Home Foundation

Foundation (CHF) was established in 1982 with a mission to ensure that CHS programs and services are fully funded. To that end, CHF raises financial and gift-in-kind resources for operating support and facility needs, and works to establish long-term sustainability through endowment funds and estate gifts.

Children's Home Foundation Funds Raised FY July 2022–June 2023

- Gifts-in-Kind
- General Support Gifts
- Shelter for Family Safety Campaign
- Restricted Gifts
- Endowment Gifts
- Estate Gifts and Other Gifts



Help SECURE THE FUTURE of CHS

Since the early 1900s, caring friends have helped CHS during challenging economic times by providing bequests from their estates. Today, donors use a wide variety of gift vehicles, including:

- **Bequests through wills and trusts**
- **Lead Trusts and Charitable Remainder Estates**
- **Making CHS the beneficiary of a life insurance policy or retirement plan**

Legacy gifts are used to grow the endowment from which a board-designated percentage is distributed annually to help fund CHS programs and services. Specific designations can also be made to programs of CHS, such as Children's Home Shelter for Family Safety.

VISIT [CHSSD.ORG/SUPPORT](https://www.chssd.org/support)

GUARDIANS OF THE CHILDREN

A legacy program established to recognize and honor those people whose vision, philanthropy and love of children have been demonstrated by a planned estate gift to Children’s Home Foundation. Funds from the Foundation support programs of Children’s Home Society including Black Hills Children’s Home, Sioux Falls Children’s Home and Children’s Home Shelter for Family Safety.

Ken & Sally Anderson
Tom & Rebecca Batcheller
Kevin & Robin Baum
Yvonne Behrends
Chuck† & Joan Benson
Bob & Deb† Biernbaum
Donald & Leona Bierschbach
Kerry & Donna Boekelheide
Harold & Helen Boer
Dick & Jane Bohy
Rob & Lesli† Brandner
Rachel & Rheann Brekke
John & Jan Brewer
Dick & Suet† Brown
Bill & Lynne Byrne
Kosta & Nancy Constantine
Doug & Darla Crown
Rich† & Sharon Cutler
Dennis & Linda Daugaard
Michael & Diana Day
Jeff Denison
Jim & Susan† Dodson
Don† & Miriam Dunmire

Dave & Cathy Eddy
Mark Edeen
Steve & Kris Egger
Paul Everson
Steve & Allison Garry
Tom & Margaret Geertsema
Maggie Harrington
Arnie Hauge
Phil Helland
Ryan & Leah Hofer
Bob & Sandy Hoover
Susan M. Hughes
Sherri Jackson
Pam Taylor & Steve Jansa
Craig & Louise† Johnson
Betty Jones
Jeff & Doreen Jorgenson
Duncan & Ellie Keirnes
Joe & Jennifer Kirby
Dan & Arlene Kirby
Scott & Marilyn Korsten
Peter & Janis Lee
Olivia Lima

Vernon & Donna Lind
Bill & Lorrae Lindquist
John & Barbara Lockwood
David† & Rita Loving
Pamela Madsen
Vicki Madsen
Mac & Bev McCracken
Tim & Diane Meyer
Linda Mickelson Graham
Mike & Lisa Modrick
Robert & Deborah Mudge
Kent & Cathy Mundon
Jack† & Ellie Marshman
Stephen R. & Mary Lynn Myers
Dave & Pat Nadolski
Bruce & Kim Nearhood
Jeff & Muriel Nelson
Erv & DeMaris Nesheim
Dr. Wesley Nord
Bob & Cathy Novak
Berniece Oberling
Tom & Michele Olsen
Lee† & Lynn Otis

Michael & Karen Pekas
Dale & Kathy Peterson
Don & Ann Platt
Shawn & Michelle Poe
Janice Radach & Family
Marlene Rance
Warren & Rhea† Reed
Merlin & Bev Riedel
George & Donna Roberts
Steve & Tracie Rohlf
John & Kay Rozell
Art & Maggie Russo
Vernon & Ruth Schaefer
Al Schoeneman
Don Schuur
Peg & Edward† Seljeskog
Jeff & Lori Skinner
Dr. John Spangler
Glenn† & Mary Jane Stalheim
Jim & Carolyn Stavenger
Mark & Jennifer Stavenger
Pastor Carli Steffes
Dennis† & Glenda Stene

Jack & Linda† Stengel
Kathryn Stevens
Dr. Cameron & Susan Stokka
Jeannette Stowsand
Glen & Caren Straatmeyer
Judy Stransky
Dr. Robert & Maureen Suga
John & Lee Thomas
Dave & Nancy Thomas
Fred & Maryann Tully
Myron & Joan Van Buskirk
Beth Walker
Gordy & Tami Wallenstein
Tom & Kathy Walsh
Steve & Angie Watkins
Rick & Mary Weber
Linda Wells
DeAun West
Drs. Robert† & Carolyn
Fassi Wharton
Richard & Donna Wilson
Joe & Karin Youngberg
Thomas† & Lynne Zimmer

†Deceased

During your estate planning, please consider supporting our mission as part of your legacy.

To learn more, contact

Jon Mammenga
Children’s Home Foundation
Chief Philanthropy Officer

605.659.4933
jon.mammenga@chssd.org



LEGACY GIFTS

Unless otherwise restricted, estate gifts to Children’s Home Foundation are used to fund, in perpetuity, CHS programs and services through annual distributions from our endowment.

LEGACY GIFTS RECEIVED IN 2023:

Marian D. Sullivan	\$61,266
Darlas Lehmann Estate	\$13,637

***Bold** type denotes gift to Children’s Home Shelter for Family Safety.*



GOAL REACHED

GIFT FOR GOOD CAMPAIGN RAISES

\$12 MILLION

Early in 2024, the Children’s Home Foundation surpassed the Gift for Good campaign goal of \$12 million. This achievement was due to the outstanding efforts of our tri-chairs, campaign volunteers, generous donors, friends and staff—thanks to each and every one of you!

As the only domestic violence shelter in the area, Children’s Home Shelter for Family Safety serves a population of more than 329,000 in Minnehaha, Lincoln, Turner, Union and McCook counties. In 2023 alone, we had more than 1,400 intakes into our safe shelter and responded to more than 6,000 crisis calls and in-person requests for assistance. Each day we average 78 people in our shelter. Without our services, their safety would be jeopardized, children would continue to be victimized and our communities would be less safe.

“It was an honor to work with the tri-chairs and the fundraising team. It was a privilege to raise funds for Children’s Home Shelter for Family Safety and it has been gratifying to observe what a success the facility is. What a wonderful effort by all!”

-JOHN ROZELL, Tri-Chair

Legacy Chair
Jeff Hazard
In Memoriam

Campaign Committee Chairs
Julie Anderson Friesen
John Rozell
Carolynn J. Stavenger

Next Gen Chair
Marty DesLauriers
Katie Ashmore
In Memoriam

Campaign Committee Members
Bob Baker
Helen Boer
Kim Burma
Mick Gibbs
Tim Hamel
Gina Hopkins
Bill Lindquist
George Roberts
Marilyn Van Demark

TIMELINE

○ GROUNDBREAKING

May 4, 2021

- We broke ground on a new facility at 113 N. St. Paul Avenue in Sioux Falls.
- 48,000-square-foot facility was designed by Koch Hazard Architects; built by Lloyd Companies.
- The facility increased capacity from 40 beds in 24 bedrooms to 96 beds in 38 bedrooms, and included enhanced dining facilities, larger family rooms, more indoor and outdoor play space and additional areas for drop-in crisis visits, case management and support services.

○ CONSTRUCTION

May 2021–September 2022

○ VIPEEK EVENTS

September 29, 2022 and October 27, 2022 (Next Gen)

○ RIBBON CUTTING

October 13, 2022

○ MOVE-IN DATE

November 15, 2022

○ CAMPAIGN GOAL SURPASSED

February 15, 2024





“In May of 2021 we linked arms and hearts at our groundbreaking, standing shoulder to shoulder to follow through on the bold dream initiated by a generous gift from T. Denny Sanford. Our shelter staff led the way on many levels, our clients shaped our new name, and our campaign volunteers modeled sacrificial giving. Personally, I will hold dear the lifelong friendships forged with my tri-chairs and the privilege of witnessing quiet moments of overwhelming donor generosity. There is no question that lives are being impacted for the better, and that hope is within reach on our doorstep.”

—JULIE ANDERSON FRIESEN, Tri-Chair



“I was honored and privileged to work on behalf of the phenomenal staff and the clients they serve to help make the new Shelter a reality. I have personally volunteered at the Shelter weekly for 21 years and to pay it back and forward for all it has given to me was a blessing.”

—CAROLYNN STAVENGER, Tri-Chair



CAMPAIGN FACTS

- Gift for Good fundraising campaign **launched in June 2021**, for the new building, construction, and endowment to ensure long-term sustainability.
- Generous contribution of **\$11 million from philanthropist T. Denny Sanford** was lead gift—with **\$5.5 million** going toward building construction and **\$5.5 million** to the Shelter endowment.
- **Gift for Good Campaign Goal:** Raise an **additional \$6 million** to complete the facility construction as well as an additional **\$6 million for the endowment** for ongoing operations.
- By the end of **September 2021**, we had received 100% participation from:
 - Campaign Committee Members
 - CHS/CHF Executive Leadership
 - CHS and CHF Board Members
 - Shelter Staff

THE CAMPAIGN OFFICIALLY
CONCLUDED ON FEB. 15, 2024.

WE RECEIVED
648 GIFTS
CAMPAIGN TOTAL
\$12,058,348

THANK YOU!

giftFORgood



SHELTER FOR FAMILY SAFETY

GIFT FOR GOOD Campaign

This is a complete listing of all pledges and gifts of \$100 and greater given to support the overall campaign goal of \$12 million.

\$1,000,000

Larson Family Foundation
Gordy & Tami Wallenstein

\$500,000

Rich & Sharon Cutler
Bill & Jill Schuneman
In loving memory of
Cindy L. Walsh on
behalf of Cindy's siblings

\$300,000

Miles & Lisa Beacom

\$250,000 +

Harold & Helen Boer
Arlen "Arnie" Hauge
on behalf of the Hauge Family
Tom & Melissa Howes
Gail & Delores Miller
Charitable Fund

\$150,000

Scott & Ronna Sletten

\$125,000 +

Mark & Cynthia Mickelson
Elite Electric

\$100,000 +

Dennis & Lizette Aanenson,
A & B Business
Carl & Michelle Carlson
First Dakota National Bank
The First National Bank
in Sioux Falls
Jim & Nini Hart
Dan & Arlene Kirby
Koch Hazard Architects
Lloyd Companies
Lyon County
Riverboat Foundation Inc.
Nehring Family Nice Foundation
Dave & Becky Nelson
Tom & Michele Olsen
John & Kay Rozell
Dr. Bob & Marilyn Van Demark

\$75,000

Bob & Maureen Suga

\$50,000 +

Albertson Engineering
American Bank & Trust
Bill & Lynne Byrne
Jim & Susan Dodson

Steve & Kris Egger

Linda Mickelson Graham &
Tom Graham
Timothy & Somboon Hamel
Bill & Carolyn Hinks
Given by Ken & Rita Karels
in memory of our parents,
Vince & Bernette Karels and
Bob & Marlys Kunde

Joe & Jennifer Kirby

The Lloyd Family
David & Valerie Mickelson
Paul & Koni Schiller
Schoeneman's Building
Materials Center
Soukup Construction Inc.
Jim & Carolynn Stavenger
Tri-State Wholesale Flooring Inc.

\$40,000

South Dakota
Community Foundation

\$30,000 +

Linda Baker
Terry Jacobson
Charles & Lois Ann Rose
Foundation

\$25,000 +

Loren & Mavis Amundson
Greg & Sheri Carmon
CoTrust Bank
Diana, Michael & Corrie Day
Timothy Dougherty &
Karen Schreiber
Dana & LaDawn Dykhous
First Bank & Trust
Curt & Julie Anderson Friesen
Bill Haugen & Amy Mickelson
Boyd & Dody Hopkins
Jack & Gina Hopkins
Todd & Maria Hopkins
Pam Taylor Jansa
Ronald & Joanne Moquist
Mitch & Katie Morrison
in loving memory of
Madison Grace Morrison
Don & Ann Platt
Tom & Kris Reaves
Jess & Tom Ries on behalf of
Antonjia, Divine, & Dakota Ries

Sammons Financial Group
Greg & Pam Sands Foundation
Vern & Ruth Schaefer
in loving memory of
Jane Ann Schaefer
Greg & Melissa Schweiss
Sercl Family Fund
Sheldon F. Reese Foundation
Jeff & Lori Skinner
Patrick & Jamie Steele
Cameron & Susan Stokka
Chris & Kristen Thorkelson
Tom & Crystal Van Wyhe
Vern Eide Motorcars Inc.

\$20,000 +

BNSF Railway Foundation
Scott H. & Marilyn H. Korsten
Limoges Construction Inc.
Michael & Janice O'Connor
Tate Profilet & Mary DeJong
Mary Pat & Jerry Sweetman and
Gayle & TJ Reardon

\$10,000 +

Brian & Denise Aamlid
Sheila Agee
Bob Baker
Bluestem Capital Company LLC
Boer Investments LLP
Alan & Terri Bowden
Children's Home Shelter for
Family Safety staff
Marty & Amy DesLauriers Family
DeWitt Designs
Drew & Sara Erie
David & Julie Ermer
Abbie M.B. Everist
The Freedom Forum Inc.
Joe & Katy Gaspar
Lisa & Scott Jones Family
Gilmore & Dorothy Koepsell Trust
Curtis and Glenda Hage
Hander Inc. Plumbing & Heating
Lynette Hardy
Peter Hauff
In loving memory of Kyle & Jordan
Tait & Jennifer Lacey
Dan & Deanna Larson
Michelle M. & Paul F. Lavallee
Bill & Lorrae Lindquist
Maguire Iron Inc.

Carol & John McGrath
Dave & Barb Ohme
Michael and Debby Olson
Kent & Cindy Peterson
Craig & Michelle Rife
Art & Maggie Russo
Al & Judy Spencer
Brian & Katie Reilly
Rob & Laura Van Demark
James & Donna Walden
Meg A. Warder & Justin Pickar
Rick & Mary Weber
BG General Myrna Williamson (Ret.)
Margaret Wiseman

\$5,000 +

Dr. Maria Bell
Dzenan & Kelsey Berberovic
Greg & Margaret Blomberg
Jim & Monica Burgess
Jim & Kim Burma
C & R Supply Inc.
Davenport Evans Hurwitz
& Smith LLP
DMKT Real Estate SD LLC
Mary Groth
Hjellming Construction Company
Blake & Marcia Hoffman
Innovative Office Solutions
IS Restaurant Design
Equipment & Supply
Landscape Garden Centers
Eric & Terri Lee
Mike & Karen Mahan
Marsh & McLennan Agency
Cole & Laura McClung
Mark & Sandy McClung
Mark & Shannon Niemeyer
Thomas & Marilyn Novotny
James & Sally Odenbach
Larry & Carol Olson
Steve & Sarah Sarbacker
Norbert & Jane Sebade
Gail Shlanta
Joseph & Diane Sztapka
Ted & Cynthia Thie
Dr. George Twitero &
Shari West Twitero
Hugh & RuthAnn Venrick

\$2,500 +

Michael & Jean Bender
Sierra & John Blachford
Kevin & Karen Doyle
Mick & Michelle Gibbs
Bill & Kathy Harris
Dan & Beth Hindbjorgen
Dale & Diane Jans
Lori Lewison
Piper Arts
Steve & Terri Reilly
George & Donna Roberts
Paul & Trisha Sampson
Steve & Kathy Sanford

Sioux Valley Energy
Customer Trust Inc.
Bobby & Genae Sundby
The Wadsworth, Thomas &
Hayes Investment Group
Brooke Wegener & Family
J. White
Ben & Leah Wiener
Kevin Zimmer

\$1,000 +

Artisan Stone Company
Tom & Rebecca Batcheller
Katelynn Beldin
Scott & Raquel Blount
John & Jan Brewer
Andrew Burchett
Steve & Helene Carlson
Amy & Calvin Carter
Catering by Cleavers
Kari Clark
Nathan & Shannon Clark
CNA Surety
Steve & Betty Crim
Darla & Douglas Crown
Kent & Carolyn Cutler
Tracy Dahl Webb
Don Johnson Construction LLC
Joel & Vicky Dykstra
Andy & Pat Dziadek
Arnold & Lynne Garson
Jason & Bethany Gusso
J. Tyler & Michelle Haahr
Keith & Meg Hansen
Sheila Hazard
Richard & Darlene Heinricy
Joe & Kim Herdina
Richard Howard &
Kathryn Thorson
Nancyjane H. Huehl
Carl & Jill Jegeris
Bill & Laura Johnson
Pamela Best Johnson
Staci & James Kropuenske
Cathy Krueger
Phil Lampert
Jeff & Julie Lutt
Lincoln County Child Find
Dr. Peter & Kathy Looby
Jack & Betty Marsh
Kent & Marcia Martin
Jim & Kara Mathis
Eric McDonald
Stacey McMahan
Maj. Mark & Jessica Morrell
Dustin & Sarah Morrison
Jason & Nancy Munson
Oh My Cupcakes!/Melissa Johnson
Mark & Evie Orcutt
Melanie & Jay Parsons
Gary & Linda Pashby
Pathward Financial
Kobi & Austin Ringling

Duane & Diane Sather
 Dave & Barb Schmidt
 Jim & Teri Schmidt
 Scott & Sue Scofield
 Mark & Jennifer Sigette
 Jerry & Deborah Sohlt
 Pastor Carli Steffes
 Daniel & Bette Stevens
 Marian D. Sullivan
 Keith & Ashley Thompson
 Steve & Shannon Van Buskirk
 Mark & Nancy Wahlstrom
 Robert & Kathy Weisser
 Kevin & Laurie Wohlleber
 Joe & Kristen Zueger

\$500 +

Janet & Denis Andersen
 Anita & Larry Bierman
 Jon & Karla Brown
 Tony Burke
 Richard & Allison Crawford
 Melissa & Richard Dahl
 Jodi Dehli
 Dan & Jessica Doyle
 Jenica Faal
 David Fliccek & June Nusz
 Dr. Leo & Kara Flynn
 Furniture Mart
 Dustin & Anne Haber
 Jason & Angela Herrboldt
 Sierra Hopkins
 Richard Johnson
 Kira Kimball
 Steve & Suzette Kirby
 Mitchell & Shantel Krebs
 Angeline Lavin
 Rita Loving
 Mike Meagher
 Marilyn Odland
 Wayne & Elaine Oolman
 Ondrea & Laura Patzlaff
 Dr. Marian & Dr. Andrea Petrasko
 Catherine Piersol
 Galen & Terri Skarphol
 St. Francis Episcopal Church,
 Scottsbluff, NE
 Tri State Wholesale Flooring Inc.
 Staff
 Jeff & Laurel Van Den Berg
 Marlin & Dixie Westerbur
 Mary Wolf
 Marjorie & David Wrotenbery
 Dr. Jerome & Cyndi Zechmann

\$250 +

Noah Brown
 Jon Crane
 Extremely Clean
 Kate & Shaun Feilmeier
 Ron and Vicki Helwig
 Howes Oil Company
 Marty Jackley
 Clara Jacob

Melissa Jenkins
 Leo King
 Kathryn Klein
 Candy Koehn-Lauck & Ray Lauck
 Ami Kolb
 LW Property LLC
 Marcus Walgrave Corporation
 Reanna Mennis
 Nielsen Insurance Services Inc.
 Theresa Schreiner
 Mark & Jennifer Stavenger
 Rob & Amy Trask
 Donna Traut
 Scott & Shelly Wittrock
 Carl Youngdahl

\$100 +

Dan & Leslie Ashmore
 Kim Balk-Phelps & Bill Phelps
 D. Irene Bamsey
 Jerry Bamsey
 Jeff & Melissa Bass
 Gwen & Eugene Betz
 Kiley Black
 Dr. Jerome & Susan Blake
 Douglas Blokzyl
 Melissa Boehrns
 Deb & Mark Brandlee
 Connie Brezik
 Chris Brockevelt
 Tawni Buhler
 Jacob & Kelly Bunde
 Frank & Dawn Bures
 Jody Carpenter
 Jodi Casey
 Keith & Holly Christofferson
 Whitney Clarke
 Paulette & Lysie Davidson
 James & Jane Doyle
 Linda Duba
 Cheryl Ferrie
 Andrea Grady
 John & Jane Groos
 Jerry, Trish & Dylon Grouzis
 Randy & Debbie Harmer
 Chessa Harrington &
 Cody Johnson
 James & Patti Hartung
 Jamie Hegge
 Bill & Jolynn Hennrich
 Darlene Hillmer
 Nancy Hinks
 Paul & Brenda Housken
 Andy & Jessa Howes
 David & Kimberly Huff
 Kurt Johns
 Sabrina Johnston
 Anita Kealey Brannian
 Steven & Donna Kocer
 Amy Koenig
 Dennis & Nancy Kulm
 Tayler Lenz
 Ross Leonhardt

Gerry & Val Liesinger
 Michael Luce
 Micki Lundin
 Bev Mann
 Joan Manolis
 Dick & Lori Menke
 Deb Miller
 Jay & Laura Mitchell
 Bev Morris
 Cassie Nagel
 Merri & Henry Nelson
 Chris & Brittany Paclik
 Jack & Valerie Paladino
 Heather & Jeremiah Plueger
 Laura Ralston
 Tammy & Tom Roberts
 Tim & Elaine Rustand
 Robert & Brenda Rysavy
 Gary & Connie Schickedanz
 Dennis & Roxie Schmitz
 Michelle Sedelmeier
 Bonita Shambaugh
 Ryan & Emily Spellerberg
 Betty Strom
 Joel Sylvester
 Michelle Tarrell
 Brian Tjarks
 Amie VanDenHul
 Amanda Wermers
 Jeanne Weyen
 Todd & Shari Wiles

“ Beautiful are those whose brokenness gives birth to transformation and wisdom. ”

JOHN MARK GREEN

6TH ANNUAL DRIVE OUT DOMESTIC VIOLENCE

FUELED BY VERN EIDE MOTORCARS

Social Movement Campaign



This campaign is designed to create awareness of domestic violence and generate funds to support victim services.



Event Date: July 2023

NET PROCEEDS:
\$54,002

DESIGNATION:
 Children's Home Shelter for Family Safety Program Support

In 2023:

- 43% more shelter days than in 2022
- 17,495 crisis contacts
- 49,776 meals provided

DriveOutDV.com

THANK YOU FOR YOUR SUPPORT!

Title Sponsor
 Vern Eide Motorcars

Pedal to the Metal Sponsors
 Blue Tide Car Wash
 (Sioux Falls & Brookings)
 Harold & Helen Boer
 Modern Woodmen of America/
 Austin Vanhove
 Pipestone
 Rosenbauer Firefighting Technology

Pace Car Sponsors
 Harold & Helen Boer
 Culver's
 Nordstrom's Automotive Inc.
 Oh My Cupcakes!
 Rosenbauer Firefighting Technology

Pit Crew Sponsors
 Harold & Helen Boer
 Sanford Health

Media Partners
 Dakota News Now
 Midco
 Results Townsquare Media
 VVI

Other Event Support
 Tom & Jean Nicholson

MORE THAN NUMBERS...



CHS analyzes all of our program data and combines it into a single dataset. We also use disaggregated data where applicable to gain additional insight into who we serve and to understand their needs.

33%

Percentage of individuals served by CHS who are **Native American/Alaska Natives***

11

Average age of children receiving care

71%

Percentage of children in residential treatment who are **boys**

9

Remote counties (over 20,307 square miles) and Rapid City served by Black Hills programming

60%

Percentage of children who were **12 and under** out of **344** forensic interviews conducted at CAC

28,718

Shelter days provided at Children's Home Shelter for Family Safety

17,495

Crisis contacts through Children's Home Shelter for Family Safety

638

Prevention, training and educational sessions offered statewide

11,100

Youth/adult attendees from across the state at CHS-led educational sessions

2,146

Nurse home visits to **205 families** through Bright Start

19

Months average length of stay in residential treatment

*44%: Percentage of individuals served by CHS who are Native American/Alaska Natives in the Black Hills

Gunderson, Palmer, Nelson & Ashmore LLP
Jason & Bethany Gusso
 Dr. Troy & Stephanie Gust
 Curtis & Glenda Hage
 Mike & Lori Hahn
Judy Hallstrom
 Hansen Manufacturing Corp.
Hansen Manufacturing Corp.
Jackie Hanthorn
 Stanley & Jean Hawthorne Fund
 Sheila Hazard
 Eloise Hefty
Tim Heiman & Judi Woodward-Heiman
 Richard & Darlene Heinricy°
 Tom & Jane Heinz
Drs. Scott Henry & Terri Peterson-Henry
Hillcrest Church, Sioux Falls
Arthur & Michele Holden
Howe Heating & Plumbing Inc.
 Darrel & Renae Hoyer
 Hy-Vee Operation Helpful Smile
Hy-Vee Operation Helpful Smile
 IMT Insurance Company
 Interstates Foundation
 J & L Harley-Davidson Inc.
 Kevin James & Dr. Cara Hamilton
 Craig Johnson
 Pamela Best Johnson
Pamela Best Johnson
 Michael Kelly
 Don & Darla Kempf
 David & Marilyn Kerksen
 Darrel & Marlene Kooi
Almir & Ashley Krdzalic
 Tim & Kori Kromminga
 Marten & Betty Kruger
Lands Lutheran Church, Hudson
 Gary & Ingrid Larson
 Peter & Janis Lee
Darlene & Wendell Liaboe Endowment*
 Greg Lyon & Jennifer Sales
 Jack & Betty Marsh
 Ted Massey
 Louis Matzner
Mary McQuillen
Mary Meier
Midco
Midco Foundation
 Jeff & Kristi Miller
Kathleen & Dusty Rick Miller Endowment*
 Jay & Laura Mitchell
 Modern Woodmen of America
 Leon & Shirley Mulder
 Jeffrey & Mary Jo Murray
 Charitable Fund*
Jeffrey & Mary Jo Murray Charitable Fund*
 Charles & Heidi Nail

Dave & Becky Nelson
Dave & Becky Nelson
 Robert & Sharen Nelson
 Joyce Nielsen
Nordstrom's Automotive Inc.
Patrick & Cindy O'Donnell
 James & Sally Odenbach
Oh My Cupcakes!
David & Barbara Ohme Charitable Fund*
 ONE AMERICAN BANK
 Jack & Valerie Paladino
Christopher & Deb Palen Paws Pet Resort
 Lee & Jill Pekoske
 Colby & Molly Peterson
 Gustavo & Loreto Pizarro
 Don & Ann Platt
 Creative Arts Endowment*
 Dr. Michael & Jennifer Puumala
 Charitable Fund*
Lee Raines Charitable Fund*
 Kevin Randall
Reliabank Dakota
 Al & LeeAnn Rieman
 Robert & Sarah Roth
 Conley & Paula Ruud
Sanford Health
 Steve & Kathy Sanford
SC Dining Services LLC
Amy & Gary Schaaop
Darrell & Twyla Schaaop
 Keith & Ann Schaeftbauer
 Matt Schultz
 Scott & Sue Scofield
SDN Communications
 Jason & Amanda Seykora
Sandy Severson
 Gary Shaffer & Corby Locke
Shetek Lutheran Ministries
 James & Deborah Siemens
Sioux Falls Bike Racing
Sioux Falls Estate Planning Council
 Sioux Steel Company Foundation
Darwin & Jane Sletten
 Slim Buttes Lutheran Church, Reva
 Smit Family Farms LLC
Cleo & Gary Snuggerud
 Jerold & Deborah Soholt
Anita Solberg
Charles & Ruth Soldano
 Paul & Jilayne Sova Family
 Charitable Fund*
St. Michaels Knights of Columbus 12617
 Heidi Stahl
Stockwell Engineers
 Sullivans
 Bill & Lori Sutton
 Richard & Nancy Swain
 Joseph & Diane Sztapka
 Bill & Cheryl Taylor
 Mayor Paul & Jill TenHaken

Tennyson Family Foundation
Thrivent Financial
 Brian & Gloria Top
Jerry & Bab Travis
Douglas & Linda Truckenmiller
 Orlen Tschetter
 Tullabee
Tyler Goff Group LLC
 U.S. Bank
 United Church of Canistota
 United Way of the Black Hills
 Dr. Bob & Marilyn Van Demark
Dave & Judy Van Veldhuizen
Janice & Vernon Van Vuuren
 Jeff & Nancy Vavra Charitable Fund*
Jeff & Nancy Vavra Charitable Fund*
Vern Eide Motorcars Inc. Employees

Viking Label & Packaging
 Dr. Bruce & Judy Vogt
Linda & Arden Waag
 Hannah & Dominic Walkes
 Steve & Angela Watkins
 Rick & Mary Weber
 Eric & Emily Weisser
 Wells Fargo Community
 Support Campaign
 Terrance & Elizabeth Whalen
Mary White
 Michael & Victoria Wilds
 Roger & Sherri Willard
 Lexis Willert & Associates LLC
Chuck & Norma Wise
Kevin & Laurie Wohlleber
 Merle & Cecile Wollman
 Greg & Sally Woods

Xcel Energy
 Dwight Young
 Lynne Zimmer
 Robert & Charlene Zylstra
\$500 +
 "Remember When" Ladies
 Cleveland School Group
 Acucare Physical Therapy Ltd.
Michael & Kimberly Adams
 Amgen PAC Match
 Revocable Trust
 Mavis Amundson
Marjorie Anderson
Associated Consulting Engineering Inc.
Peter & Laura Atkins
Edwin & Janice Baatz
 Rhonda Baker

AFFILIATED FUNDRAISING EVENTS



MORE PARTNER FUNDRAISERS

Children's Home Shelter for Family Safety fundraising events are noted in **BOLD**.

Red Rock Bar & Grill, Partners & Friends Bike Nights and more	\$25,799
Those Guys ABATE Poker Run and Christmas Fund Gifts	\$17,676
Gage Brothers – Employee Community Giving Program	\$7,842
Nyberg's Ace Little Red Stocking "Round Up"	\$5,941
Black Hills Wind & Fire Motorcycle Club – Motorcycle Ride	\$5,132
Knights of Columbus St. Therese, Rapid City – Bowling Tournament	\$5,000
Scooters Coffee/Sioux Falls – Day of Giving	\$4,864
Faith Family Church & Outreach Center, Sioux Falls – Outreach Offering	\$4,400
The Pomp Room, A Rock N Roll Bar Story—Anniversary Movie Documentary	\$2,600
Howe Heating & Plumbing Inc.	\$2,595
Paws Pet Resort	\$2,000
Oh My Cupcakes!	\$1,200
Tullabee Boutique	\$1,200
Hy-Vee Operation Helpful Smile	\$1,148
Hy-Vee Operation Helpful Smile	\$1,136
Fit Body Boot Camp	\$1,042
Pizza Ranch – East 10th St. Sioux Falls and Brandon "Pizza Day"	\$1,040
Levo Credit Union	\$835
Cornerstone Bank	\$667
Sioux Falls City Football Club	\$500

Bank of America
Charitable Foundation
Darrel Bartell
Anita Behrenbrinker
Ben Clare United Methodist Women, Valley Springs
Donald & Leona Bierschbach
Donald & Leona Bierschbach Brian & Janet Bird Charitable Fund*
Gary & Michelle Black
Norman & Melanie Bliss Family Fund*
David & Jill Bockorny
Jerry & Susan Bohner Mary Boone
Sid & Barbara Bostic
Brandon Plumbing & Heating Inc.
Bright Eyes Daycare
Rick & Holly Brunick
Cadwell Sanford Deibert & Garry LLP
Vincent & Anne Cannella
Steve & Helene Carlson
John & Rebecca Carmody Family*
Nancy Chase
Michael & Julie Childers
Dorothy Chronister
Cipher Imaging Cornerstone Bank
Lisa Crist
Melissa & Richard Dahl Dr. Robert & Jan Dahl
Dakota Beverage Company Inc.
Michael Day & Diana Dufur-Day
Jay & Christine Dean
Stan & Elaine Deelstra
Sharon DeHaan
Virginia Dettman Charitable Fund
Bill & Beverly Donaldson
Dana & LaDawn Dykhous
Kurt & Michelle Eeg
Sidney & Mayona Elcock Family Endowment*
Sidney & Mayona Elcock Family Endowment*
Elkton United Parish Women
Linda Elliott
Emmanuel Lutheran Church, Beresford
Envive
Dr. David & Julie Ermer
Paul Everson Charitable Fund*
Paul Everson Charitable Fund*
Roger & Kathy Fick
Fireplace Pros—Home of BBQ Heaven
First English Lutheran Church, Lennox
First Lutheran Church, Colton
First United Methodist Church, Brookings
William Fischer

Kristin Flora
Todd & Diane Friese
Arnold & Lynne Garson
Michael & Gracia Gillespie
Jerry Godfrey
Russel & Nel Golden
Good Shepherd Lutheran School
Stan Graber Financial Services Inc.
Grace Lutheran Church, Parker
Grandview Reformed Church, Armour
Grider Properties
Grider Properties
Family of Lenita Groos
Grossenburg Implement Inc.
Michael & Julie Grossman
Nick & Carol Gusso
H & H Mobile Home Service Inc.
Jack & Judy Hamilton
Larry & Susan Hamre
Hansen Family Endowment
Lornell & Elizabeth Hansen
Jason & Kristin Hanson
Harrisburg School District
Sharon Haselhoff
Hauff Mid-America Sports Helen Oppold Blair Memorial Fund*
Dr. Wendell & Holly Hoffman
Holy Spirit Church, Sioux Falls
Horst & Isaacson Charitable Fund*
Mary Howard
Howe Heating & Plumbing Inc. Employees
Justin & Shanna Howe
Interstates Companies & the Harbor Group
Sharon Ivarsen†
Mary Janklow
Melissa Johnson
Arden & Debra Jones
Kenneth & Jacqueline Kessler
Kris & Katie Kluver
Knights of Columbus No. 1489
Jeffrey Krell
James & Joyce Kurtz
Mary Lampy
Levo Cares Foundation
Lewis Realty - Keller Williams BH
Bill & Lorrae Lindquist*
Craig & Pat Lloyd
Masterson Family Fund*
Gary & Zelma McCormick
Mark & Kristol McKie
Roger & Clarice Megard
Merrill Lynch
Midland National Individual Matching Gift Program
Scott & Diane Miller
Elmer & Patricia Minks
Molly Maid Sharon Moon

Elaine Moore
Maj. Mark & Jessica Morrell
Gregory & Kathy Morrissey
Brad & Sheryl Myers
Ronald Neri & Georgia Austin Neri
New Beginnings Faith Church, Sioux Falls
Arthur & Marie Nordstrom
Roger & Nila Novotny
NuStar Energy LP
Elaine & Wayne Oolman Our Saviors Lutheran Church, Inwood, IA
Laverna Padilla
Robert & Kathleen Paul
Todd & Patty Petersen
Drs. Marian & Andrea Petrasko
Melvin Platt
POET Research
John & Lynn Pollard Owen & Megan Postma
PrairieFire/
Mark & Gretchen Noordsy
Joy Prehn
Pride Neon Sign Solutions
Don & Beth Rasmussen
Redeemer Free Lutheran WMF, Canton
Art & Beverly Richert
Emily Ries
Jill & Dave Roemen
Romsdal Lutheran Church, Hudson
Mariano & Catherine Sanito
Gary & Connie Schickedanz
Dr. Greg & Karen Schultz
Patrick & Lori Seykora
Showplace Cabinetry
Chirag & Veronica Shukla
Sigaty Dental Clinic PC
Sioux Falls Christian Schools
Sioux Falls Community Blood Bank
Sioux Falls Corvette Club
Sioux Falls City Football Club LLC
Sioux Falls East 10th St. Pizza Ranch
SKD Knights of Columbus No. 16017
Sletten Properties LLC
Charline & Deming Smith Endowment Fund*
Todd & Pamela Sorensen
Todd & Pamela Sorensen David Sorenson
Dean & Rita Sorenson
South Dakota Office of State Auditor
South Dakota Society of Medical Assistants
Leo Spinar
Jon & Jean Stenberg
Deb Stewart
Kerry & Bonnie Stiner
Jeannette Stowsand

Glen & Caren Straatmeyer
Sunnycrest United Methodist Church Time Out Group, Sioux Falls
Merlin Tebbe
Chris & Sherri Thornton
Thrivent Financial
Douglas & Linda Truckenmiller
Rick & Jo Turgeon
United Methodist Presbyterian Women, Browns Valley, MN
Vader & Landgraf Inc.
Dennis & Nancy Van Der Weide
Van Horn Financial Services
Graham & Courtney Van Horn
J.E. & Amy Van Horne
Veritiv
Rita & Donald Vogt
Weber Body Shop
Nelson & Vickie Wielenga
Theresa Wingen
Donna Weinacht
Winsupply of W Sioux Falls Plumbing & Electrical
Eileen Winter
Workplace Marketing
Insurance Advisors
Jackie Yackley
Zion Lutheran Church Guild, Sioux Falls

\$250 +
Derek & Danica Allmer
AmazonSmile Foundation
Bernice Anderson Endowment*
Automatic Building Controls
Bank of New York Mellon Corporation
Brent & Emily Bartels
Jonah Beacom
Brian & Jilliean Beck
Brian & Jilliean Beck Anita Behrenbrinker
Walt & Jan Bones
Thomas & Amy Bosch
Brandon Pizza Ranch
Barney & Mary Brandenburg Charitable Fund*
Allan & Sharon Brink
Allan & Sharon Brink
Allen & Gloria Brown
Frank & Dawn Bures
Shirley & Gaylord Burley
Cardinal Christmas Project
Jane Carlon
Craig & Teresa Carlson
Carpenter UMW
Alan Carter
Catholic Daughters of America St. Thomas Court No. 1533
Michael & Julie Childers
CIGNA Tel-Drug
Clark Family Trust

Clark Family Trust
Click Rain Inc.
Colman Lutheran Church
Carrie Congdon
Cornerstone Financial Solutions Inc.
Tom & Karen Cota
Karyn Cox
Betty Crawford & Roger Raether
Gerard & Pamela Crawford
Shirley Creek
James & Judy Cronin
Curb Creations
Dakotaland Manufacturing—Erfman Family Charitable Fund*
Daniel Dardis Memorial Fund*
James & Deanna Daum
Jay & Christine Dean
Terry DeBoer
Douglas & Gail Deibert
Douglas & Gail Deibert
Brian & Pam Dressing
Steve & Kris Egger
Emmanuel Baptist Church, Sioux Falls
Faith Lutheran Church, Humboldt
Fall Festival Folks, Currie, MN
Daniel & Jolynn Foley
Aaron & Amy Fox
Joe & Katy Gaspar*
Jeffrey & Holly Godber
Bob & Cherie Goehring
Alan & Laura Goins
Drew & Deirdre Goodwin
Grandview Reformed Church Women of Hope, Armour
Rosa Lea Grav
Evelyn Griesse
John & Lisa Griffin Family Fund*
Dr. Courtland & Julianna Hall
Jeffrey & Kelley Hambek
Hansen Family Endowment*
Eric & Tammy Hanson
Hart2Hart Inc.
Bill & Kristi Hauck
John & Molly Heisler
Mike Hibma
Glen & Dixie Hieb
Tyler & Kayla Hinrichs
Diego Hoganson
Edith Hoogendoorn
David & Kimberly Huff
John & Anne Hughes
Terry Jacobson
Dave Jensen
Matt & Beth Jensen
Johnson, Janklow & Abdallah LLP
Lois Jones
Joshua Homes/
Tim & Dawn Stenberg
Thomas & Ruth Katke
Julie Kelley
Sondra Kimball
Knights of Columbus No. 6605

David & Deanna Knudson
Scott & Pamela Koelewyn
 Rich & Cindy Korman
David & Anita Kostboth
 Larry Larson
 Douglas & Sandra Leafstedt
 Legacy Law Firm PC
Janet Lenz
 Jane Leonhardt
 Mary Lerdal & Patrick Badiuk
 Troy & Brittany Link
Nick & Darcy Litzen
 Janet Lohman
 Jim Mackay
 Bruce Marek
 Timothy & Janet McCaskey
 Bruce & Cathy McCollister
 McDonough Charitable Fund
 Tom & Susan McDowell
Troy & Lisa McKenney
Merrill Lynch
 Messiah Lutheran Church WELCA,
 Flandreau
 Metabank National Association
 Larry & Dorothy Meyer
 Benvenuto Mezzapelle
**Minnehaha County Family
 Violence Council**
Brooke & Matthew Murphy
 Chris & Penny Nelson
Merri & Henry Nelson
 Todd & Dawn Nelson
 Keith & Wendy Neuharth
 New Beginnings Faith Church,
 Sioux Falls
 Dave & Karen Nicholson
Thomas & Jean Nicholson
Harvey & Karen Odens
Marilyn Odland
Glenn Olsen
 Gloria Olson
 Rob & Laura Olson
Jason & Sarah Owan
 Pathward Financial NA
 Donald Patnoe
 Lori Perkins
Vilo & Marlys Pietz
 Ross & Lynn Plucker
Karen Pratt
Lester & Mary Ramstad
 Jessica Rasmussen
**Dr. Richard & Suzanne
 Rauschenbach**
Larry & Barbara Rehfeld
 Lori Richter
 Paige Rickert
Royal Neighbors of America
Salem Mennonite Church, Freeman
 Danielle Sargent
 Dianne Schmidt
 Bonita Shambaugh
Sioux Falls Specialty Hospital LLP
 Galen & Terri Skarphol

Fran & Gail Sommerfeld
Jeffrey & Reneece Strand
Duane & Linnea Strande
Style Encore
 Sunrise Banks NA
 Ken Thaler
 Warren & Shirley Thompson
 Endowment*
**Warren & Shirley Thompson
 Endowment***
 Judge Stuart & Pam Tiede
Trent Baptist Church
 Fred & Maryann Tully
Gene & Julie Tverberg
 United Methodist Women, Geddes
Diane Vandekieft
Laurie VanDenHoek
Vikor Teleconstruction
 Shari & Anthony Weber
 Tim & Brenda Welbig
 Talbot & Kelli Wieczorek
 Tim & Sandy Wulf
Carl Youngdahl
 LouAnn Ziegler
LouAnn Ziegler

\$100 +
 Bailly & Kathy Aalfs
 James & Deborah Abbott
Kathy Addy-Hofer & Phillip Hofer
 AGC of SD, HHU Chapter
Jean Ahlers
 Joan Ahlers
 Allstate
Carol & Perry Amussen
Timothy Andersen
 Joe & Karen Anderson
 Scott & Kat Anderson
Tom & Carol Anderson
 Architecture Incorporated
 Jace Arpan
 Connie Ashmore
Bonnie Atkins
 Avera Heart Hospital &
 North Central Heart
**Avera Heart Hospital &
 North Central Heart**
 Richard & Linda Bakken
 Jeff & Karla Ball
 Bob & Mylene Bangasser
 Paul & Erika Batcheller
William & Shirley Bauer
Dee Baysinger
Gene & Kimberly Beaner
 Jerald & Cheryl Beckler
Alvin Beitelspacher
**Ben Clare United Methodist,
 Valley Springs**
 Bender Commercial
 Real Estate Services
Ronald & Leetta Bennett
 Kevin & Susan Benson
**Benton Lutheran Church WELCA,
 Crooks**

Bergen Lutheran WELCA, Meckling
 Doug & Sandy Berven
 James & Ardy Berven
 Angie & Casey Besler
 Bethany Women Of The ELCA,
 Hurley
Kendra & Ronn Beyer
Rosalie Beyer
 Bide-A-Wee Club, Lead-Deadwood
 Todd & Marian Biederstedt
**Big Springs Baptist Church,
 Alcester**
Jayne & Loren Bittner
 Judy Bittner
Judy Bittner
Sierra & John Blachford
 Blend Interactive Inc.
Marsha Block
 Stacy Bloemendaal
 Maggie Bloom
**Blue Angels Employee Volunteer
 Program at Wellmark BC&BS**
 David Bode
Boen & Associates Inc. Employees
 Jim Boelter
Diann Boesch
Cheryl & Allen Boese
 Derito & Margaret Bonicelli
 Eugene Borem
 Janet Boswell
 David & Patty Bowen
 Boyd Law Firm, Prof. LLC
 Terry & Joy Bracy
Rob Brandner
Brandon Valley Baptist Church
 Brandon Valley Optimist Club
Gary Brendel
 John & Jan Brewer
 Peter Brochhausen
 Del & Karen Brooks
Martha Brost
 Don & Cherril Brown
 Jason & Tami Brown
 Maxine Brown
 Norell Brown
 Vicki Brown
Susan Brue
 Bruce Brugman
 Austin & Christina Buhta
 Roger & Marcia Bunger
Bill Bunkers
 Jonathan & Marci Burdick
 Scott Burke
 Jim & Kim Burma
 Elton & Jody Byre
 Bill & Lynne Byrne
 Dana Cable
 Robert Cady
 Chris Cahill
**Calvary Lutheran Women, Irene
 Canton Lutheran WELCA**
 Robert Caselli

**Catholic Daughters of the
 Americas, Sioux Falls**
**Catholic Daughters of the Americas
 Court Sancta Maria No. 368**
 Cedar Branch Lodge 179 AF & AM
 Century Club, Volga
 Dr. Douglas Charlson
Judi Christensen
 Craig & Cynthia Christianson
 Harry & Barbara Christianson
 Dr. Dennis & Joan Clarke
 John & Kathryn Clemenson
CNA Matching Gifts Plan
Colman Lutheran Church WELCA
 Eric Coffield
 Connie Colwill
Confluence
 Carrie Congdon
Convergint Technologies
 The Creswells
 Steve & Betty Crim
Cub Scout Pack 371
 Cute Smiles 4 Kids
 Kent & Carolyn Cutler
 Cutler Law Firm
Dacotah Bank
 Dakotaland Manufacturing—
 Erfman Family Charitable Fund*
Stephen Dannen
 Blaine Davis
 Darrold & Linda Dean
Sharon DeHaan
 Delaware Women's Ministries,
 Lennox
 Clinton DenBoer &
 Bobbi Nelson-DenBoer
 Kris Denevan
Department of Health SAM
Donna Dickson
 Jeff Dittman
Joseph & Jolene Donelan
 Daniel & Laura Donohue
 Leah Doom
 Stephen & Barbara Doshier
 Thomas & Kareen Dougherty
 Claudia Douglas
 Michael Draayer
 Marlys Drewes
 Jeffrey & Jolene Dyce
Gordon & Julie Dykstra
 Thomas & Connie Earley
 David Earnest
 Ronald & Aldena Ecklein
Jeffrey & Hattie Edman
 Annie Eichele
Lisa Ellefson
 Orin & Linda Ellwein
Empire Riders
 David Enke
Lonnie Entenman
 Rick & Marcia Entwistle
 Doug & Shirley Erickson
 Bret & Sandra Estes

Steve & Lavonne Farner
 Matt & Kari Feldhaus
**Justyn & Jennifer Ferris
 Rod & Julie Fieldsend**
 First Bank & Trust
Colin Fitzsimons
Leif Fjellestad
 Steve & Mary Helen Flanery
 James & Jodi Fleming
 David Flicek & June Nusz
 John & Anita Fluit, Jr.
John & Anita Fluit, Jr.
Alicia Fonder
 Jerry & Jill Franken
Thomas Frederick
Deb Fredrick
Teresa Freeman
 Doris Fritts
 Steve & Natalie Frost
 Bill & Jean Fuller
Bill & Jean Fuller
James & Debra Fuller
 Dora Jean Garlick
 Steve & Allison Garry
Gary & Cynthia Gaspar
 John, Melissa, Ben & Jacob Gathje
 Jeff & Julie Gednalske
 Randall Gerloff
 Michael & Carla Gibson
Renee Gloege
Kristina Graber
**Grace Lutheran Church
 Endowment Fund, Luverne, MN**
**Grace Lutheran Church Women,
 Luverne, MN**
**Grace Reformed Church Women
 of Grace, Corsica**
Kim Graff
 Dave & Jan Grage
 Brian Griebel
Brian Griebel
 Jeff & Heidi Groeneweg
 Dean & Peg Gulbranson
Christine Gullickson
Tammi & Jay Gunderson
 Wynn & Lorraine Gunderson
 Randall & Nancy Hall
 Doug Hansen
 Robert & Suzanne Hansen
 Ann Hanson
 Harrisburg Optimist Club
 South Dakota
Lorri Harrison
 Hartford Area Optimist Club
Hartford United Methodist Church
Alan & Linda Hartman
 Alfred & Linda Hartmann
Robert & Linda Hartmann
James & Patti Hartung
 Garrett & Emily Hartwig
 Hauff Mid-America Sports
Peter Hauff
Jan Heeren

Jeff & Doreen Heikes
Douglas & Kathy Heilman
Darvin & Sharon Hendriks
Theresa Henehan
Kim Hess
Douglas Hickey
Michael Hickey
Richard & Pamela Hilber
Dennis & Allison Hippen
Joyce Hoefert
Lorie Hogstad
Marlys Hohman
Lucas Holden
Blake Hoogland
Andree Howenstein
Hal & Susan Howes
Michael Howes
Hudson Lutheran Church WELCA
Mike & Cindy Huether
Jessica Ibanez
Eileen Ingebrand
Jacquie's Fund*
Jacquie's Fund*
Teresa Jahner
Erin Jansa
Steve & Pam Jansa
Dennis & Janelle Jarabek
Family Fund*
Jasper WELCA
JoAnn Jensen
Ginger Jepsen
Jeptha Lodge No. 121 AF & AM
JLG Architects
Alan & Carol Johnson
Chad & Julie Johnson
Dennis & Elaine Johnson
Greg Johnson
Gregory & Meg Johnson
Jennifer Johnson
Leni Johnson
Sharon Johnson
Bryce & Kelsi Jones
Gene & Cynthia Jones, Jr.
James Jones
Jean Jones
Mark Jones
Mark Jones
**JSA Consulting Engineers/
Land Surveyors Inc.**
Celestin Kabasele
Gary & Kathleen Kasten
David & Sharon Kelly
Linda Kelly
Gary & Joyce Kessler
Timothy & Jane Kinsella
Marcia Kittelson
Tara Klapperich
Beverly & Delmar Klassen
Beverly & Delmar Klassen
Klaudt Service LLC
Jeff Klein
Jan Kleinhans
Charlie & Judy Kneip

Andrew & Barb Knight
Koch Hazard Architects
Koch Hazard Architects
Candy Koehn-Lauck & Ray Lauck
Rich & Jackie Koopmann
Russell & Sherena Kost
Randy & Shawn Kovash
Cathy Kramer
Gary & Karen Kratochvil
Elwyn & Leann Kropuenske
Andrea Kuehn
Kristina Kuehn
Aysia Labata
Mitchell & Maureen Lafleur
Amy Lake
Lands Lutheran Ladies, Hudson
Rowena Langerock
Jason & Angie Langford
Janet Larsen
Sandi Larson
Lauer Capital Management Ltd
Bruce & Faye Lee
Gregory & Christy Lee
Legacy Law Firm PC
Mike & Shirley Leimbach
Rob & Becky Leonard
Paul & Karen Leslie
Lloyd & Cindy Levidow
Philip & Barb Lewison
Christine Lindberg
Laurie Long
Lost & Found
Mark & Cheryl Lottman
Kurt & Valerie Loudenback
Brenda Ludens
Douglas & Janita Lueders
Marcy Lund
Steve & Roxanne Lynch
Steve & Roxanne Lynch
Kevin & Maureen Maeschen
Melvin & Beverly Maeschen
Kevin & Stephanie Manson
Mariner Wealth Advisors
Don & Janette Marker
Jim & Kara Mathis
Annette Matzner
David & Colleen Maurer
Don & Bonnie McCleerey
Bonnie McCue
Bonnie McGinnis
Rodney & Carol McGinnis*
John & Carol McGrath
Dr. Michael & Jean McHale
Marie McKittrick
Taylor McMillan
Leon & Linda Meiburg
Dick & Lori Menke
Dennis & Tammy Mettler
Alayne Meyer
Garry Meyer
Scott & Anne Meyer
MG Oil Company
Amy Mickelson & Bill Haugen

Carla Midden
Norbert Miles
Karin Miles Wiese
Steven & Susan Miller
Brad & Tarri Minor
Ronald & Susan Miulli
Jeff & Joan Mordhorst
Deb & Dennis Moritz
Jeff & Larae Morlan
Margaret Morrison
Todd & Shonna Mueller
Kent & Cathy Mundon
Olana & Ethan Munson
Jerry & Anna Mundt
Jane Murray
Greg & Cindi Mutchelknaus
MVB Properties Inc.
Jeri Mykleby
Nathanael Women of the ELCA,
Alcester
**Nathanael Women of the ELCA,
Alcester**
Dr. Gayle & Angie Nelson
Larry Nelson & Dr. Patsy Uken
Erv & DeMaris Nesheim
Jerry & Barbara Newman
Nooney & Solay LLP
Adam Nusbaum
Nyberg's Ace
Robert & Kristine O'Connell
Robert & Kristine O'Connell
Doris O'Dea
Tom & Carolyn O'Meara
OLE LLC
Tom & Michele Olsen
Jennifer Olson
Jon & Gloria Olson
Roger & Bonnie Olson
Marley Opsahl
Ashley Oyen
Palisade WELCA, Beaver Creek, MN
Palisade WELCA, Beaver Creek, MN
Jeff & Carol Parker
Thomas & Mary Parlin
Dean & Franki Parson
Gary & Linda Pashby
Jamie Pazour
Dr. Michael & Karen Pekas
Perspective Inc.
Marlene Petersen
Daniel & Karen Peterson
Howard & Sandra Peterson, Jr.
Jack & Eleanor Peterson
Catherine & Lawrence Piersol
Anthony Pizer & Jessica Aguilar
Ingrid Place
**Pleasant Valley Lutheran Church
WELCA, Vermillion**
Kaylene Pofahl
David Pollard
Eugene & Judy Preston
Steven Priest
Patrick & Marcia Quinn

Janice Radach
Janice Radach
Marjorie Raess
Navin Ramalingam
Robert & Jody Rasmussen
Brian & Lori Ree
Fred & Carol Rehder
James & Diane Reiners
Patty Reistroffer
Dan & Rita Renner
Bruce & Leah Reuwsaart
Merlynn Rezek
David Rice & Elizabeth Perez
Judy Richards
Lavonne Riechers
Kirk & Cheryl Rikansrud
Tammy & Tom Roberts
**Romsdal Womens Group, Beresford
RSA**
Phil & Jimmie Rysdon
Saint Paul Lutheran Church, Hull, IA
Walter & Heather Salis
Same Day Surgery Center, Rapid City
Clifton & Jeanette Saugstad
Merlin & Leann Sawyer
Kathy Schellhammer
Margaret Schick
Patricia Schiro
Janice Schneckloth
Craig & Nancy Schoen
Connie & Alvin Scholten
Andrew & Heather Schreiber
Theresa Schreiner
Kathy Schuknecht
Terry & Patricia Schulte
Sensational Smiles Dentistry
Aaron & Kimber Severson
Gerilyn Sherman
Eloise Sinjem
Sioux Falls First Anna Circle
Sioux Falls Morning Optimist Club
Sioux Valley Energy
Sioux Valley Optimist Club
Leo "Bud" Skancke†
Matt & Yvonne Smith
Aric & Jessica Snyders
Sorlien Electric Inc.
Soukup Construction Inc.
South Dakota Christmas
at the Capitol
John & Eve Spearman
Stuart Splonskowski
St. Boniface Altar Society, Freeman
St. Jacob's Lutheran Church, Colton
**St. Mark's Lutheran Church,
Sioux Falls**
Shirley Stach
Jolene Stangeland
Terry & Dar Steenholdt
Patrice Steinman
Daniel & Bette Stevens
Wayne & Palma Stombaugh
Sarah Storm

Holly Stotz
**Sunnycrest United Methodist
Church Women, Sioux Falls**
Esther Swan
Col. Mary Swenson, Ret.
Col. Mary Swenson, Ret.
Peggy Teslov
Paula Thill
Robert & Joan Thimjon
Donna Thomas
Gordon & Debra Thompson
Lee & Judy Thompson
Timothy & Susan Thune
Henrietta Timmer
Jean Torkildson
Traco Medical Inc.
Michael & Megan Tramp
Dennis Treiber
Doug & Bonnie Tschetter
Paul Tschetter
TSP Inc.
Mary & David Ulmer
Samantha Umulisa
Robin Unzelman
Lyle Van Hove
Bill & Joann VanDenHemel
Brad & Amy VanMaanen
Van't Hul Farms
Shirley Vehle
Kent & Jill Vetrus
Mary Vickery
Debra Vigness
Janet Von Auer
Tom & Kim Wadsworth
Forestt & Laurie Wagner
Merle & Nancy Walter
Jo Anna Warder
Ronald Warren
Richard & Merry Watters
John & Nikki Weiland
Lewis & Renee Weinberg
Gerald & Karen Weires
Larry & Marlene Weires
Beverly Welch
Weller Brothers
Ronald & Peggy Wencil
Eugene & Katie Wendinger, Jr.
Jeff & Linda Weppler
Jim & Deb Whitcomb
John & Deanna Wiarda
Nic Wildeman
Bradley & Veronica Wille
Max & Heidi Williams
Carmella Wilson
Richard & Sharon Wilson
Cullan & Melinda Winter
Dr. Brian & Susan Wiswall
Kevin & Laurie Wohlleber
Jeanne Wold
WoodGrain Brewing Company
Jim & Penny Woster
Russell & Lisa Wright
Xcel Energy Foundation
Joe & Kristen Zueger

The following list shows a few examples of how restricted gifts were used at CHS:

- **Electronic smart boards for classrooms**
- **New Beginnings baskets for families at Children's Home Shelter for Family Safety**
- **Recreational outings and trips**
- **Birthday and Christmas gifts**
- **Creating a new employee growth and development specialist position**

RESTRICTED GIFTS

Gifts Given January 1–December 31, 2023

These gifts were given to purchase a specific item or service, or to be used for a designated purpose. Gifts given to Children's Home Shelter for Family Safety are noted in **bold** type.

\$60,000

Seed for Success Foundation

\$20,000

David & Barbara Ohme
Charitable Fund*

\$10,000 +

Madsen Family Education Scholarship*

\$5,000 +

Arnie Hauge
Pete Lien & Sons Inc.
Madsen Family Creative Arts
Education Endowment*
Verizon Wireless

\$2,500 +

AT&T Services Inc.
Calvary Lutheran Church, Rapid City
Cholla Foundation
Drew & Deirdre Goodwin
Arnie Hauge
Craig & Pat Lloyd
Lee & Jill Pekoske
Scooter's Coffeehouse
Western Legacy Foundation

\$1,000 +

Percy & Majorie Amundson
Family Endowment*
James & Ardys Berven
Bob & Diane Biver
Jonathan & Marci Burdick
Dr. Joseph & Amy Cass CHS
Excellence in Caring Endowment*
Catering by Cleavers
Dennis & Linda Daugaard
Todd & Christine Ernst*
Amie Estes
Tom & Ann Marie Fullerton, MD
Rexford & Cindy Hagg
Helen Madsen Endowment
for CHS Prevention Program*
Highmark Federal Credit Union
Michael Howes
Liz Lloyd
Vicki Madsen Adoption &
Foster Care Endowment*
Madsen Family Library
at CHS Endowment*
Benvenuto Mezzapelle
Million Dollar Round Table
Pipestone

Don & Ann Platt
Creative Arts Endowment*

Amy & Gary Schaap
Mike & Sarah Schulte
Sercl Family Fund*
Sioux Falls Woman's Alliance*
Sisson Printing Inc.
Scott & Ronna Sletten
South Dakota Army

National Guard Camp Rapid
Chris & Kristen Thorkelson
Those Guys A.B.A.T.E.
Van Beek Family Foundation Agency
Van Beek Family Foundation Agency
Walmart
Walmart
Robert & Kathy Weisser
Richard & Donna Wilson

\$500 +

Dr. Robert & Judy Allen
Brian & Roxanne Baker
Big D Store, Deadwood
Black Hawk Community Church
Ladies Aid
Black Hills Community Bank
Black Hills Federal Credit Union
Employees
Jon & Karla Brown
Bill & Lynne Byrne
Greg Daniel & Shaun Berg-Daniel
Rosanne Derby
Cy & Sandy Farner
First Bank & Trust
Tim & Kathy Fitz
Gregory & Connie Forstner
Curt & Julie Anderson Friesen
Nolan Hanson
Jim & Nini Hart
Roger & Chris Heacock*
Kay & Tom Kassube
David Loving Memorial Fund*
**Madsen Family Library at
Shelter for Family Safety***
John & Carol McGrath
Dr. Isaac & Holly Morgan
Tom & Michele Olsen
Laura Pierce
Tim & Kristi Prince
Brian & Brittany Richman
John & Kay Rozell
Sioux Valley Optimist Club

Sisson Printing Inc.

Shirley Stach
Sun Surety Insurance Company
Graham & Courtney Van Horn
Tom & Kathy Walsh
Workplace Marketing
Insurance Advisors
Thomas & Micah Worsley

\$250 +

Big D Store, Sturgis
David & Patty Bowen
Jeff & Tammie Broin
James Dodson
Dollar Store, Deadwood
Ken & Marlis Eben
Gene & Martha Fauth
Rose Fink
Firehouse Brewing Company
Joe & Katy Gaspar*
Mike & Lori Hahn
HillsView Dental PLLC
Jacob's Gallery
Steve & Pam Jansa
Jesse & Jo Inc.
Thomas & Ruth Kaspar
Lou Madsen
CHS Beautification Endowment*
Paul & Connie Matzner
Minnekahta Coffee
Susan Parker
David Reznicek
Marilyn Ruediger
Steve & Kathy Sanford
Matt & Yvonne Smith
Scott & Staci Stern
Dr. Cameron & Susan Stokka
Dr. Willis & Patricia Sutliff
David & Nancy Van Holland
West River Whiskey
Robert & Charlene Zylstra

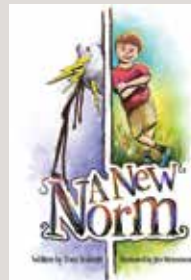
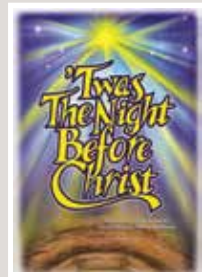
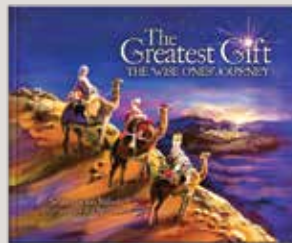
\$100 +

Alpine Inn
Arrowhead Country Club
Big D Store, Central City
Black Hills Wind & Fire
Motorcycle Club
Loren & Sheila Boyens
Ronald Bristow
Buckingham Strategic Wealth
Jim & Kim Burma
Bill & Lynne Byrne

Robert & Virginia Colangelo
Connie Colwill
David Cotten
Bob & Mindy Davis
Todd & Linda Dawley
Michael Day & Diana Dufur-Day
David & Catherine Eddy
Dr. Michael & Kathleen Fiegen
Firehouse Campground
Steve & Mary Helen Flanery
Joel & Beth Flier
Pastors Larry & Kathy Forristall
Vicki Gibson
Patrice Graham
Sonia Griebel
Tim Hamel & Somboon Jaihar-Hamel
Lois Hanson
Les & Linda Hengeveld
Josh Holle
Jack & Mary Jacobs
King Johnston
Collin & Megan Kjose
Kris & Katie Kluger
Robert & Julie Kriese
Kim Ladd
Edward & Sherry Lake
Mike Lynde & Cheryl Lynde
Ken & JoAnn Mattheis
Dr. Patrick & Kathleen McGreevy
Craig & Elizabeth Miller
Mary Ann Moylan
Susan Nelson
New Beginnings Faith Church,
Sioux Falls
Dr. James & Carol Oakland
Dr. Michael & Deborah Olson
Susan Osthus
Warren & Sandy Oyler
Lynn Peterson
Rick & Mary Beth Pudwill
Pumphouse Coffee
John Schanberger
Nolan & Brooke Schmidt
Douglas & Tanya Schneck
Elizabeth Schuldt
Richard & Annie Sehr
Jeremie Slagle & Jill Grevlos Slagle
Cole & Kezia Snyder
Richard Stanger
Patricia Sterud
Taco John's, Deadwood
Trane Company
Davis & Grainne Trosin
Pete Turek
Rick & Jo Turgeon
Jennifer VandeGriend
Vince & Sheri Weber
Wells Fargo Bank SD, NA
Tiffany Wenck
Peter Wharton
Greg & Sally Woods



THANKS FOR YOUR SUPPORT!



CHILDREN'S HOME SOCIETY BOOK PROJECT

CHRISTMAS BOOKS & A NEW NORM

Event Date:
CHRISTMAS SEASON 2023

NET PROCEEDS: \$44,676

DESIGNATION:
CHS Program Support

- Christmas Reflections*
- Something About Christmas*
- On That One Christmas Eve*
- The Greatest Gift*
- Return To The Farm*
- The Little Lost Sock*
- 'Twas The Night Before Christ*
- A New Norm*

A Book • A Message • A Mission

Since 2002, the CHS Book Project has served as a unique and creative vehicle to remind people that Children's Home Society is available for those who need our help and as a call to action for those who have a heart for helping. Each book is written by South Dakota author **Tom Roberts**, CHS Community Relations Coordinator.

Through book sales, storytelling programs, media interviews and public presentations, we share the mission of Children's Home Society and we solicit support for the kids and families we serve. To date, more than 60,000 copies of these books have been sold, raising more than \$1.6 million.

To learn more about the books, the author, how to purchase, or to schedule an event go to chsd.org/books.

ENDOWMENT GIFTS

Gifts Given January 1–December 31, 2023

Gifts and pledges listed include designated endowment to Children's Home Society or one of its programs.

\$164,000 +

Jon Crane Children's Home Society
Benefit Auction

\$141,000 +

Rotary Club of Rapid City Rushmore
• Golf Tournament
• Gala

\$68,000 +

Jack & Vianne Kucera

\$46,000 +

Kieffer Sanitation Trash Can Open
Golf Tournament

\$33,000 +

Janet Kahler

\$20,000 +

James & Eloise Elmen Foundation

\$15,000 +

John & Vickye Hoffman

\$10,000 +

F. L. Clarkson Family Foundation
Kieffer Sanitation
TruStage
Michael & Mary Trykoski

\$5,000 +

Brett Anderson
Black Hills Energy
Jim & Monica Burgess
June Clark Endowment Fund
Compass One Healthcare
James Dodson
Dr. Leo & Kara Flynn
Deonne Kahler
Myles & Jeanette Kennedy
Amy Koenig
Eric & Terri Lee
John & Kay Rozell
Jo Anna Warder

\$2,500 +

Black Hills Animal Hospital PA
Black Hills Rubble Management
Black Hills Shooters Supply Inc.
Brazos Roofing International
CARSTAR Collision Center
Costello Porter Law Firm
Dacotah Bank
Glen & Carla Eng
ForeverLawn Black Hills
Stuart Fromm, MD

Dr. Troy & Stephanie Gust
Independent Optical
Caiti Kean
Dean Kurtz Construction Company
Michelle & Paul Lavalley
Jeffrey Meyer & Susan
Boensch Meyer
No Foo Foo LLC
Michael & Georgia O'Connor
Don & Ann Platt
RESPEC
Dave & Barb Schmidt
SeaCrest Wealth Management LLC
Robert & Jennifer Stalley
TNT Homes & Construction LLC
The UPS Store
Village Caregiving
John & Dorina Weigelt
Bill & Judy Wittrig
Xanterra Travel Collection
Zeisler Construction

\$1,000 +

Mavis Amundson
Avid4 Engineering
Big D Store, Rapid City
Big Truck Rental
Black Hills Community Bank
Black Hills Truck & Trailer Inc./NATT
Derito & Margaret Bonicelli
John & Debbie Bowman
John & Jan Brewer
Jonathan & Marci Burdick
Butler Machinery
Thomas & Susan Collins
Jay & Angela Crossland
Doug & Darla Crown
Dakota RV
Michael Day & Diana Dufur Day
Farmers Insurance & Financial,
Dave Schmidt Agency
First National Bank
First Western Federal Savings Bank
Fisher Beverage Company
Gateway Autoplex
Chad Gollnick
Gustafson Builders
Gary & Carmen Hansen
Roger & Chris Heacock
Gene & Mary Hensley
Hills Septic Service
Impact Environmental Group

Paul Jensen
James & Holly Jones
Ketel Thorstenson LLP
Neal & Brenda Larson
David & Cindy Ledford
LEI

Kent & Marcia Martin
Joe McFarland
McNeilus Truck & Manufacturing Inc.
Dustin & Sarah Morrison
Mundon Anticline Investment LLC
Erv & DeMaris Nesheim[§]
Neugebauer's Jewelry
Design & Service
Omnitech Inc.
Ray Osloond & Deb Rawlins
Pacific Steel & Recycling
Marjorie Pearman
Don & Amy Policky
Rapid City Police Department[†]
Tim & Kim Rensch
Brian & Brittany Richman
Scott & Lara Roetzel
Dave & Melissa Rowe
Rush Refuse Systems
Sander Sanitation Service
Security First Bank
TEC Equipment
Fred & Sherry Thurston, II
TranSource Truck & Equipment
Clayton & Cheryl Trulson
Unify Home Lending Inc.
Dr. Scott & Helen Van Dam
William & Sherry Wood

\$500 +

Action Mechanical Inc.
Charles & Jill Arbeiter
Kyle & Courtney Bargmann
Black Hills Federal Credit Union
Black Hills Tire
bluepeak
John Brockelsby
Mark & Betsy Carbo
Clemmons Asphalt Maintenance
Jon & Gail Crane
Troy Desilva
Diesel Machinery Inc.
David & Kimberly Dolan
Richard & Rachel Edelen
Edward Jones-Kyle Bargmann
Tanner Engel
Byron & Vicki Foreman
Curt & Julie Anderson Friesen
Ralph & Mildred Galyen
Good Samaritan Society &
Sanford Health
Gunderson, Palmer, Nelson &
Ashmore LLP
Justin & Jeannie Henrichsen
H-S Precision
James Huff
Lafawn Janis

Ron & Kathy Jeffries
James & Judith Johnson
Kieffer Family Dental PC
Jeff Kingsbury
KLJ Engineering LLC
Deborah Kuehn
Phil Lampert & Sue Knudtson
Jon & Jenny Mammenga
Freddy & Leslee Maseman
Mike & Chris McCormick
Harry & Gail McKane
MG Oil Company
Dr. Isaac & Holly Morgan
Pioneer Bank & Trust
Rapid City Young Life
Lt. Col. Jennifer Rollins
The Rushmore Hotel & Suites
John & Carol Schneider
Scull Construction Services Inc.
The Skin Institute at
Rapid City Medical Center LLP
Randy & Marcia Taylor
Tyler & Kessa Tribby
Andre & Karie Truitt
Valley Sweeping
Bobby Wessel

\$250 +

All Pro Real Estate
Dan & Leslie Ashmore
Robert & Kimberly Baker
Michael Beck, Jr.
Matt & Sarah Benne
Steve & Kelsey Blair
Bowman Ranch LLC
Josh Campbell
Bill & Tam Colson
Fred & Kelly Folsom
Dana & Kristi Foreman
Alan & Heidi Bell Gease
Erich & Nancy Grade
Bart & Beth Haivala
Clara Jacob
Karl & Jill Jegeris
Brad & Carol Johnson
Lane Johnson
Scott & Holly Kopplin
Erica Krohn
Dennis & Jessie Levin
Garrett & Marci Meier
Kent & Cathy Mundon
Lowell & Mary Ann Myers
Bruce & Kim Nearhood
Dan & Jean Peteret
Linda Peterson
Eric & Tifanie Petro

Daryl & Ginny Reinicke
Zach Rount
Cody Schreiber
William & Cheryl Schreier
Randy & Kimberly Schwinler
Doug Theel
Fred & Maryann Tully
Patrick & Melissa Wood

\$100 +

Mark & Claudia Barry
Mike Baumann
Shirley Bloemendaal
Bruce Brugman
Bob & Beth Chalberg
Jean Cline
Mark Crosswait
Kevin & DeVee Dietz
James & Amy Donohue
James & Jane Doyle
Derek Dumdie
Justin Ebsen
Kelly Farrar
Bennett Fierro & Naylah Johnson
Daryl & Cale Fierro
Carey Gardner
Pat & Erin Goetzinger
Mike & Marnie Gould[†]
Guadalajara Mexican Restaurant
Peter Healy
Nicole Hedrick
Bill & Laura Johnson
Christopher Johnson & Paula Meloy
Jon & Tina Johnson
Paige Kadlec
Brian Kappenman
Todd Kenner
Heather Knox Sazama
Marv & Lori Larabee
Aric Lopez
Jack & Lori Lynass
JC Lynass
Tom & Bonnie Martley
Phil McCaulley
Debra Niemi
Trent Policky
Purple Wealth LLC
Beau Riopel
Jamie Root
Steve Schacht
Dr. Jeff & Laurie Schleusener
Gerianne Short
Katie Starr
Travis Theel
John & Betty Van Beek
Kent Weber
Jacob West



MAKING A **DIFFERENCE** FOR GENERATIONS

Event Date: March 25, 2023

NET PROCEEDS: \$65,400

DESIGNATION:
Children's Home Child Advocacy Center



**Children's
Home
Society**

OF SOUTH DAKOTA

THANK YOU TO OUR DONORS, SPONSORS & VOLUNTEERS!

Presented by

Rotary Club of Rapid City Rushmore
Xanterra Travel Collection

Double Titanium Sponsor

Janet & Deonne Kahler

Titanium Sponsor

Riddle's Jewelry

Beverage Sponsor

Village Caregiving

Platinum Sponsors

Black Hills Energy
Black Hills Oral Surgery &
Dental Implant Center
Monument Health
Rotary Club of Rapid City Rushmore
Xanterra Travel Collection

Silver Sponsors

Big D
Fisher Beverage Company
Hills Septic Service
Jeff Kingsbury
Sander Sanitation Service
Strider Sports International
Dr. George Twitero & Shari West Twitero

Media Sponsors

Gray Television
KELO/KCLO
Midco
NewsCenter 1

Partners Protecting Kids Award Recipient

Lara Roetzel,
Pennington County State's Attorney

GALA PLANNING COMMITTEE

Darla Crown, Chairperson
Keith Cook
Carmen Hansen
Ron Jeffries
Janet Kahler

Jeff Kingsbury
Bruce Nearhood
Linda Peterson
Theresa Schreiner
Abby Sharp

Dr. George Twitero
Shari West Twitero
Dr. Scott Van Dam

9TH ANNUAL **CLEAVER'S CHEF CHALLENGE**



Event Date: March 24, 2023

NET PROCEEDS: \$44,500

DESIGNATION:
CHS Program Support

SPECIAL THANKS

Catering by Cleavers
A&B Business Solutions
Cask & Cork Distributing

AAA Collections Inc./
Advanced Asset Alliance
Accents Event Design &
Decor Rental
Annie Welsh Real Estate
Blue Haven Barn and Gardens
Chef Chris Weber
CorTrust Bank

Dacotah Bank
Davenport Evans Lawyers
Energy Event Group
FiveFour Training
I.S. Restaurant Design
Equipment & Supply
Lauriebelles
Pepper Entertainment
Red Rock Tools LLC
Trail Ridge Senior Living
US Foods
Weisser Distributing



THANK YOU TO ALL THE CHEFS FOR MAKING THIS EVENT POSSIBLE!

Chef Peter Cobb | Sioux Valley Grille
Chef Ryan Hembree | Trail Ridge Retirement Center
Chef Mike Jensen | Roots of Brazil
Chef Richard Lockard | Avera Specialty Hospital
Chef Alex Keehn
Chef Dan Myers | Crawford's
Chef Jonathon Ricks CEC | Sodexo at Augustana University
Chef Matt Sibley | Pata's BBQ
Chef Emily Wilson | Bee Loved Kitchen

GIFTS-IN-KIND

Gifts Given January 1–December 31, 2023

Gifts-in-kind are donations of tangible items, goods or services. A few examples include Christmas presents, Easter baskets, auction items for fundraising events, consumable household goods for Children’s Home Shelter for Family Safety, event passes, print materials and media support. Children’s Home Shelter for Family Safety gifts are noted in **bold** type.

\$950,000 +
Midco

\$132,000 +
Midco

\$75,000 +
Results Townsquare Media

\$67,000 +
Dakota News Now

\$57,000 +
KELO TV Stations
Schulte Subaru of Sioux Falls

\$20,000 +
Koch Hazard Architects
Midwest Communications

\$15,000 +
JLG Architects

\$10,000 +
Jon & Gail Crane
Fit Body Boot Camp

\$5,000 +
Amazon
Baby 2 Baby
Black Hills Church of Christ,
Rapid City
Rose DuBois
Ellsworth Monthly Volunteers
FastSigns

It Takes a Village
Michelle & Paul Lavallee
Monument Health
Riddle’s Jewelry, Rapid City
Signature Salon
Sisson Printing Inc.

\$2,500 +
A&B Business Solutions
Buffalo Wild Wings, Rapid City
Carnival Americana
Catholic Daughters of the Americas Court St. Christina, Tea
Central States Fair Inc.
Chameleon Hair Design
First PREMIER Bank
Fisher Beverage Company
Hauff Mid America Sports
King Of Glory, Sioux Falls
LaurieBelles Boutique
Donald & Paulette Montileaux

Mark & Michelle Mordhorst
Noon Optimist Club
of the Black Hills
Novak Sanitary Service
Orthopedic Institute Employees,
Family & Friends
Pajama Program
Pajama Program
Angela Poches
Charley & Gwen Ray
Debbie Reed
Daryl & Ginny Reinicke
Scheels, Sioux Falls
St. Michael’s Parish, Sioux Falls
Pastor Carl Steffes
Studio 26 & Salon Sollievo
Target Card Services
Wear A Big Smile Foundation
Weisser Distributing Inc.
Patrick & Melissa Wood

\$1,000 +
Arctic Glacier
Black Hills Oral Surgery &
Dental Implant Center
Jonathan & Marci Burdick
The Cato Corporation
Church of Jesus Christ
of Latter Day Saints, Rapid City
Coca Cola Bottling Company
Day 1 Bags
Edward Jones Financial Advisors
Elite Electric & Visions Design
Evan Gardner
Russel & Nel Golden
Good Shepherd Christ
Lutheran Church, Rapid City
Gunderson’s Fine Jewelry
Gary & Carmen Hansen
Karen Hofer
Howe Heating & Plumbing Inc.
Independent Optical
JJ’s Kicks 4 Kids Inc.
Shirley & Laura Johnson
Journey of Hope
Diane Kayongo-Male
Kidtopia
Kieffer Sanitation
Kingsbury Auctions
Kohl’s—East
Landscape Garden Centers

Nationally Speaking Inc.
Parkway Orthodontics
Wade Patton
Peace Lutheran Church Quilters,
Rapid City
Plains Commerce Bank
The Prairie Club
Print Mark-et
Project Warm Up
Risen Savior Catholic Church, Brandon
Sarah Rogers
Kevin & Suzan Roggenbuck
John & Kay Rozell
Rush Mountain Adventure Park
Sanford International
Sanford Women’s Health Plaza
Scheels, Sioux Falls
Jim & Kathy Sigle
Sioux Falls First
Mary Spargur
Splitrock Landscaping &
Nursery Inc.

St. Katharine Drexel Parish, Sioux Falls
Summit Carbon Solutions
TranSource Truck & Equipment
Trinity Lutheran Church, Canton
Dennis & Nancy Van Der Weide
Veritiv
Mark Wasco
White’s Queen City Motors
Mike & Jane Wolforth
Zion Evangelical Lutheran Church, Sioux Falls

\$500 +
The 1880 Train
Adventures with Santa Keith
Mary Beth Anderson
Noemi Anduce
Arrowhead Country Club
Arrowhead Country Club Members
Arvig Media
Avera Heart Hospital &
North Central Heart Employees
Avera Heart Hospital & North Central Heart Employees
Avera Orthopedics
Mark & Claudia Barry
Beta Sigma Phi, Sioux Falls

Big Frog Custom T-Shirts
Lindsey Bixby
Black Hills Energy
Black Hills Playhouse
Black Hills Reptile Gardens Inc.
Andrea Brady
Jolene Bruns
Susan Bultena
Catering by Cleavers
Central Church Siouxper
Summer Serve, Sioux Falls
Chautauqua Craftsmen &
Artisans of the Black Hills
Church of Christ, Sioux Falls
Church of Jesus Christ
Black Hills Ward
Ron Comes
Cornerstone Bank
Culver’s
Custer Area Arts Council
Custer Lutheran Fellowship Quilters
Dakota Alliance Soccer Club
Dakota Beverage Company Inc.
Department of Health SAM
Designer Shoe Warehouse
Dave & Marsha Englert
Find Your Fabulosity
ForeverLawn Black Hills
Pastors Larry & Kathy Forristall
Fountain Springs Community
Church, Rapid City
Good News Reformed Church, Sioux Falls
H-S Precision
Brenda Haviland
Hegg Realtors - Amy Stockberger Team
Bill & Jolynn Hennrich
Henry Carlson Company
Gary & Wanda Hermanson
Hermosa School
Becky Lowe’s Class
Jolene Hilbrands
Robin Hofmeyer
Holy Spirit Church, Sioux Falls
Hotel on Phillips
HUB International Great Plains
Imagination Dollhouses for Children
Imagination Dollhouses for Children
KAJ Hospitality

Sherri Kerr
Knights of Columbus, Sioux Falls
L. G. Everist Inc.
Liv Hospitality LLC
Britney Maasch
Mackenzie River Pizza, Grill & Pub
Magnum Enterprise LLC
Bonnie Marion
Nikki Mark
Sarah Miller
Minnehaha Republican Executive Board & Party
The Monument
Monument Health ASPEN CENTER
Kent & Cathy Mudson
Mary Nettleman
JoAnn Oyen
Peace Lutheran Church, Sioux Falls
Lorell Reinke
Kiley Riedel
Rockerville Volunteer Fire
Department & Sheriff’s Deputies
Rotary Club of Rapid City Rushmore
Kath & Daryl Rozeboom
Sanford Health Facilities & Planning
Sanford Health Plan
Marian & Jon Scarbrough
SDSU Trio Programs
Sensational Smiles Dentistry
Sertoma Butterfly House & Marine Cove
Sioux Falls Cares
Sioux Falls Lutheran School 5th Grade
Sioux Falls Police Department Patrol Division
Sisson Printing Inc.
Southeast Technical Institute
Jill Speirs
St. Leo Catholic Church, Pipestone
Starbucks, Sioux Falls
Stephanie Stensland
Strider Sports International Inc.
Target West Side
Todd & Mary Tilberg
Together We Rise
Trinity Lutheran Church,
Ortonville, MN
Natalie VanHouten
Vern Eide Motoplex

Vibrant Body Art
Wells Fargo Bank South Dakota NA
Wermerson Orthodontics
West Lyon Elementary School
Brittany Whipple

\$250 +
Marv & Caroline Ackerman
Aladdin Companies
Rick Albrecht
Alcester-Hudson School
Amesbury Truth
Noel Anderson
Apple Tree East
Apple Tree West
Nancy Ashley
Avera McKennan
Respiratory Therapy
Bob & Vivian Bailly
Robert & Kimberly Baker
Alex Bankers
Bear Country
Jodi Benson
Bierschbach Equipment & Supply
Black Hills Balloons
Black Hills Community Theatre
Black Hills Quilters Guild, Rapid City
David & Patty Bowen
Bright Eyes Daycare
The Canton Barn LLC
Casey's, Sioux Falls
Catholic Daughters of the Americas
Court Mother Teresa No. 2510
Central States Manufacturing Inc.
Bill & Andrea Christensen
Community Reformed Church,
Sioux Falls
Creative Surfaces
Cross Fit Viable
Dakota Lawn & Landscape Service
Dakota Spirit
Melanie Dancler
Deeper Wells Church, Sioux Falls
Denny Sanford PREMIER Center
Dollar General No. 22751
Melissa Domagala
Thomas & Eileen Donley
Sue Edelman
Enterprise Holdings Foundation
Farmers Insurance & Financial,
Dave Schmidt Agency
First Christian Reformed Church
GEMS 4th Grade Girls, Sioux Falls
First Gold Gaming Resort
First United Methodist Church,
Sioux Falls
Fit Life Gym
Dr. Leo & Kara Flynn
Pastors Larry & Kathy Forristall
Curt & Julie Anderson Friesen
Jenny Fritz
Ralph & Mildred Galyen
William & Gretchen Gammeter
Drake & Sara Gerdes

Girl Scout Troop 41451
Jon & Darcy Goehring
Corlys Griebel
Marcia Groeneweg
Hansen Physical Therapy
Megan Harnisch
Hart2Hart Inc.
Janine Haskell
Tenille Heier
Linda Heinrich
Sharon Hofstad
Brent Hubers
Independent Ale House
Indian Creek Lutheran Church
WELCA, Meadow
The James Younger Gang
of Northfield
Paulette Jelen
Scott & Lori Kading
Ashley Kirk
Knecht Home Center
Brenda Kneip Bostic
Dennis Kolbrek
Gary & Karen Kratochvil
Rae & Jane Kurth
Lindsay Laughlin
Laureate PSI
Living Hope Community Church,
Tea
Rhonda Manitz
Todd Matus
Carol McEntee
John & Carol McGrath
Carolee Miller
Mobile FX
Audrey Mongan
Camille Moser
Sarah Munce
Shirley Nagel
Netherlands Reformed Christian
School, Rock Valley, IA
New Beginnings Faith Church,
Sioux Falls
Chantel Neyhart
North Point Trust Company
Northwest Engineering
Nyberg's Ace
Peace Lutheran Church,
Rock Rapids, IA
Kelsey Petersen
Debbie Peterson
Danny & Joey Pulscher
Drew Reinschmidt
Ron Roehl
Troy & Betty Rubin
Juan Rubio
Brandy Schatz
Marian Schneckloth
Sioux Empire Lions Club
Sioux Falls Stampede
South Dakota Advocacy Network
for Women
St. Francis House

Talecris Plasma Resources
Art Temple
Jenn Terry
Fred & Sherry Thurston, II
Mike & Robin Tobin
Tyler Goff Group LLC
Van Beek Family Foundation
Agency
Dr. Scott & Helen Van Dam
Marilyn VanWyhe
Christine Veldhuizen
Volunteers of America Dakotas
New Start
Stuart Wenzel
West Nidaros Lutheran Church,
Crooks
West Nidaros Lutheran Church
WELCA, Crooks
Windsor Block Bar
Wings Gymnastics Academy
Zion Lutheran Church, Garretson
Zion Lutheran Church Quilters,
Garretson

\$100 +
Carrie Aaron
Active Faith Chiropractic
Cheryl Adams
Ajok Adiang
Aeropostale
Jean Ahlers
Akela Spa
Grace Anderson
JoAnne Anderson
Kassidy Arndt
Susan Asleson
Jeff Azure & Cora Summers
Jill Bailly
Troy & Leslie Bakken
Kim Balk-Phelps & Bill Phelps
Becky Ball
Jodi Banck
Kimberly Banks
Bargain Bins 605
Lana Barse
Julie Baxa-Otto
Jaie Beach
Bonita Beiningen
Ben Reifel Middle School
Jeanette Benson
Brad Bergeson
Marlyn & Laurie Bergeson
Gabriella Beukens
Jeremy & Susan Bill
Sherry Lynn Blassl
Shantell Bleeker
Blessed Redeemer Preschool,
Brandon
Patrick & Kallie Booth
Melanie Boysen
Samantha Brandonberg
Connie Brown
Lisa Buche
Shirley & Gaylord Burley

Laura Buseman
Brooke Bushby
Bill & Lynne Byrne
Olivia Calabaza
Jennifer Canton
Carsforsale.com
Amy & Calvin Carter
Casey's, Sioux Falls
CCC Information Services Inc.
Rick & Jackie Ceraowniak
London Cerfas
Hanna Chachanko
Kay Chester
Pad Chireggy
Citi Realty Services
City of Hartford
Coca Cola Bottling Company
High Country
Courtney Collen
Colonial House Restaurant
Jamie Conlon
Doug & Peggy Crane
Kate Dahle
Daily Bread Food Pantry
Dakotah Steakhouse
Karla Dannen
Marti Dargen
Kim Davis
Brandi DeBoer
Shonna Dejager
Will Delfs
Stacy Dryak
George Eccarius
Diane & Ron Egdorf
Elkhorn Ridge Resort & Golf Club
Embrace Church, Sioux Falls
Emmanuel Lutheran Church,
Beresford
Renae Engles
Rhonda Erickson
Ariel Even
Eyemart Express
Barb Facile
Beth & Daryl Feilmeier
Delilah Filholm
Linda Finck
First Baptist Church, Sioux Falls
First United Methodist Church,
Rapid City
Danielle Fisch
Amy & Derek Fischer
Jan Flynn
Kevin & Sandy Fonder
Connie Foss
Sheila Fox
Cheyenne Frankus
Stephanie Fulford
Luis Garcia
Ann Garner
Josh Gates
Ron & Helen Gehrts
Andrea Gerber
Shawn Giesler

Nadine Gjerde
Jamie Glasco
Rebecca Goergen
Kay Goodall
Grace United Methodist Church,
Rapid City
Tom & Judy Grady
Brady Graff
Larry Grave
Mandalyn Greve
Perry & Mary Grimme
Dick Groen & Kristi Oskar-Groen
Vicki Grote
Gunderson, Palmer, Nelson &
Ashmore LLP
Holly Gusso
Elaine Haack
Habitat for Humanity
of Greater Sioux Falls
Maddie Haiar
Blair Hansen
Lornell & Elizabeth Hansen, II
Butch & Robin Hanssen
Robyn Harr
Harrisburg High School
Camille Hart
Hart Ranch
Hart Ranch Golf Course
Kelly Hartnett
Cheryl Haugen
Shery Hawley
Hawthorne Elementary School
HDR Inc.
Pam Hegerfeld
Lindsey Heidt
Kari Helgeson
Micah Hewitt
McKenzie Hilbrands
Jim Hill
Kathy Hilton
Destiny Hofer
Hollywood Style
Holy Cross Lutheran Church,
Sioux Falls
LaToria & Anthony Horan
Owen & Jan Hotvet
Ardis Hovdenes
Jean Huegel
Amber Huntley
Teri Huska
Barbara Hyland
Timothy & Carmen Ingalls
Joan Ishol
Heather Javurek
JDS Industries
April Jennings
Alexa Jerstad
Kenneth & Donna Jipp
Desarae Job
Amanda Johnson
Katelyn Johnson
Katelyn Johnson
Mary Johnson

Megan Johnson
Rochelle Johnson
Jolly Lane Greenhouse
Marla Jones
J-Spa Today
Spencer & Julie Kaul
Matthew & Melanie Keegan
Janet Keenan-Hauch
Dewayne & Dorothy Keiper
Adam & Keri Keith
Liz Kelley
Ken's Korner
Brenda Kibbe
Kids Inc.
The Kidz Salon
Darlene Kimpling
Cindy Klein
Tim & Cindi Klein
Wendy Klein
Elizabeth Klusmann
Knollwood Heights United
Methodist Church, Rapid City
Julia Knutson
Sharon Koenig
Halle Kroepflin
Cindy Krueger
Bethany Kurth
Darla Lais
Janelle Lam
Irma Landry
Dan & Marie LaRock
Marianne Larson
Pam Larson
Latter Day Saints Church, Rapid City
Jodi Latza
Laura Wilder Elementary
Jane & Steven Lawson
Joseph Lax
Megan Lee
Alexie LeZion
Aubrey Liberty
The Lodge at Deadwood Hotel
Rosina Loretta
Deb Luettel
Lena Luksic
Lisa Lund
Nancy Lund
Denise Lutkemeier
Angel Luttmann
Vicki Madsen
Mahlander's Inc.
Kate Mahmutovic
Jack Master
Maurices
McCrossan Boys Ranch
Peggy McIntyre
Amy McKenzie
Rita McVay
Laura Meaddows
Chris Miller
Jaime & Troy Miller
Kristy Miller

Maggie & Andrew Miller
Shelly Miller
Minerva's Restaurant & Bar,
Rapid City
Paul Mitchell School
Cape & Melissa Molstad
Montrose United Methodist Church
Sunni Moore
Moyle Petroleum Company
Judy Mulock
Jerry & Anna Mundt
David & Rita Myers
Nathanael Lutheran Church,
Alcester
Bruce & Kim Nearhood
Kelly & Marc Neeman
Adam & Ashley Nelson
Jacqueline Nelson
Ruth Nesheim
Jenna Neugebauer
Governor Kristi & Bryon Noem
Cathy Nielson
Bridget Nilges
Nothing Bundt Cakes
Jane Novotny
Zina Nunez
O'Gorman Students for Life
Olive Garden
Omnitech Inc., Rapid City
Omnitech Inc., Sioux Falls
Open Bible School, Rapid City
Original Pancake House
Brittney Osmundson
Our Savior Lutheran Church
Sunday School, Viborg
Miriam Oye
Laverna Padilla
Wayne & Shannon Paetow
Linda Papendick
Dereck Parce
Ondrea Patzlaff
Paws Pet Resort
Janine Perez
Cathy Perryman
Kristen Persson
Kathleen Petersen
Angela Peterson
Debbie Peterson
Piesano's Pacchia
Pheasantland Industries
Eric & Laura Preheim
Primary Manufacturing
Profile Plan
Jeff Puthoff
R.F. Pettigrew Elementary School
Susmeeda Rai
Barbara Ramse
Ransom Church, Sioux Falls
Rapid Valley United
Methodist Church
Rebecca Rathbun
Alice Reaves

Jenn Rechaagel
Marian & Royce Redlin-Reit
Debbie Reese
Renner Corner Locker
Samantha Rensch
Tim & Kim Rensch
Paulette Richters
Jennifer Rien
Darlene Rollings
Shawna Rothwell
Lindsey Rouse
The Rushmore Hotel & Suites
Salvation Army
Same Day Surgery Center
Tara Samuels
Sanford Birth Place
Stephanie Sauder
Vonnie Sauer
Jon & Kim Schafer
Scheels, Rapid City
Sheba Schlaikjer
Jodi Schwan
Paul Schwan & Christine
Weigel-Schwan
Scooter's Coffee, Rapid City
Second Reformed Church, Lennox
Sirbaus Shaikh
Lori Shambaugh
Dr. John Shelso &
Rita Jensen-Shelso
Jenni Sherrill
Tammy Sigaty
Brenda Sigler
Slumberland
Judy Smith

Todd Smith
Kenneth & Judy Snell
Taylor Soderling
Someone's in the Kitchen
Janet Sorenson
Kevin Sowers
Sandy Speker
Laura Spencer
St. Mark's Lutheran Church,
Sioux Falls
Thomas & Dianne Stadtfeld
Starbucks, Sioux Falls
StarMark Inc.
Pat Stauss
Betty Steen
Amy & Chad Stensland
Jackie Sterling
Diana Steven
Tricia Stewart
Dr. Robert & Maureen Suga
Jeffrey & Azure Summers
Shirley Sundem
Taco Johns, Rapid City
Erin Theis
Connie Thomas
Nancy Thompson
Renee Thompson
Beth Thoreson
Jolie Tostenson
Kristin Treeby
Trinity Lutheran Church, Tea
Reneae Trudeau
Matthew Tschetter
Melissa Tweet
Jayne & Cullan Valnes

Kim Van Asperen
Dean & Judy Van Overbeke
Dave & Judy Van Veldhuizen
Samantha Vaneck
Village Caregiving
Meagin Vizecky
Mary Jo & Harvey Vogel
Nancy Vollan
Allison Walter
Betty Walter
Jean Waltz
Brooke & Dan Wegener
Barbara Weidner
Mark & Julie Weinmann
West Prairie WELCA Women,
Lennox
West Prairie WELCA Women,
Lennox
Tina West
Jessica Westerdahl
Kelley Westover
Hannah Whitting
Karen Wiechmann
Kelsey Wildseuer
Bart & Kari Wiley
Sara & Jason Williams
Sue Williams & Greg Kohlenberg
Kathy Winter
Kelly Wrede
Samantha Zaneck
David Zeigler
Bonnie Zerr

SIGN UP FOR OUR EMAIL NEWSLETTER

A LETTER FROM HOME

Scan QR code
and sign up today!



And we'll send you
monthly heartwarming
stories about the
children and families
we serve throughout
our CHS programs.



Visit our website at chssd.org
or call Sara Burtis at 605.965.3114.

MEMORIAL GIFTS

Gifts Given January 1–December 31, 2023

Memorial gifts are given in memory of family members or friends who have passed away. Memorial gift card packets are available by request. Due to space limits, only gifts of \$20+ are listed. Children’s Home Shelter for Family Safety gifts are noted in **bold** type.

- Jen Abbott**
James & Deborah Abbott
- EVale “Dolly” Abraham**
Bob & Cherie Goehring
- Neil Acker**
Mike & Shirley Leimbach
- Tony Ackland**
Angela & Michael Tiedeman
- Randy Ahrendt**
Gary & Connie Schickedanz
- Anthony “Tony” Akland**
Norma Wetrosky
- Linda Andal**
Susan Brue
- Susan Andersen**
Kim & Janine Beck
Linda Bruce
Kathryn Centra
Eileen Ingebrand
Machelle Kocer
Rita Loving
Corey & Heather Weeg
David & Karen Zimbeck
- Donald “Don” Anderson**
Brenda Ludens
- J. Eldon Anderson**
Bill & Lorrae Lindquist
Jim & Kara Mathis
John & Kay Rozell
Rick & Mary Weber
- Marlys Anderson**
Allen & Gloria Brown
- Virgil Anderson**
David & Jean Rave
- Anne Claire Anderson-Dvoracek**
Nyberg’s Ace
- Kathryn “Katie” Ashmore**
Nancy Alexander
Connie Ashmore
Rebecca Bettmann
Derito & Margaret Bonicelli
John & Jan Brewer
Don & Cherril Brown
Buckingham Strategic Wealth
John & Nancy Burke
Craig & Cynthia Christianson
Harry & Barbara Christianson
Kent & Chris Christopherson



J. ELDON ANDERSON

Friend of CHS/Father of Julie Anderson Friesen
Former CHF Board President

- Brian & Lorie Edwards
- Bret & Sandra Estes
- Michael & Peggy Fatur
- Deborah Flicek
- Curt & Julie Anderson Friesen
- Steve & Natalie Frost
- Pat & Erin Goetzing
- Marcia Green
- Gunderson, Palmer, Nelson & Ashmore LLP
- Wynn & Lorraine Gunderson
- Dr. Troy & Stephanie Gust
- Michael Hickey
- Amber Hoogestraat
- Bruce Huber
- Kenneth & Glenda Hutton
- Jan Kappelman
- Patricia King
- Andrew & Barb Knight
- Mitchell & Maureen Lafleur
- Mary Lerdal & Patrick Badiuk
- Liz Lloyd
- Patrick & Nancy Malone
- Mariner Wealth Advisors
- Dick & Lori Menke
- Ross Menke
- Steve & Mary Mentele
- Jack & Rachel Mithelman
- Ronald & Susan Miulli



KATIE ASHMORE

Friend of CHS
Shelter for Family Safety Volunteer

- Margaret Morrison
- Kent & Cathy Mundon
- NAWIC
- Erv & DeMaris Nesheim
- Jerry & Barbara Newman
- Donald Patnoe
- Howard & Sandra Peterson, Jr.
- Jessica Rasmussen
- Tammy & Tom Roberts
- John & Kay Rozell**
Schemmer Associates
- Theresa Schreiner
- Gary Shaffer & Corby Locke
- Dr. Geoff & Jackie Slingsby
- John & Eve Spearman
- Patrice Steinman
- Esther Swan
- Dr. Bob & Marilyn Van Demark
- Rick & Mary Weber
- Talbot & Kelli Wieczorek
- Margaret Austin**
Ronald Neri & Georgia Austin Neri
- Mary Baer**
Candy Koehn-Lauck & Ray Lauck
Donna Traut
- Mark Bailey**
Staci & James Kropuenske



DON BAKER

Father of Janice Lee
Shelter for Family Safety Staff

- Donald Baker**
Carol & Perry Amussen
Melissa Edman
Wendell & Merline Kock
Staci & James Kropuenske
Candy Koehn-Lauck & Ray Lauck
Janice & Steven Lee
Mike & Shirley Leimbach
- Richard “Dick” Baker**
Bob Baker
Linda Baker
Jeff & Karla Ball
Kathryne Bonander
Tom & Bonnie Brown
Davenport Evans Hurwitz & Smith LLP
Sharon DeHaan
Steve & Kris Egger
The First National Bank in Sioux Falls
Ann Flanagan
Ann Flanagan
Bill & Jean Fuller
Steve & Allison Garry
Michael Howes
Orlin & Carol Jibben
Gregg & Susan Johnson
Karen Koob
Rich & Jackie Koopmann



RICHARD “DICK” BAKER

Friend of CHS/Uncle of CHF Board President, Bob Baker

- Andrea Kuehn
- Kristina Kuehn
- Jack & Eleanor Peterson
- Brian & Lori Ree
- Susan Roust**
- John & Kay Rozell
- Gary & Nancy Ruckdaschel
- Gordon & Debra Thompson
- Dr. Bob & Marilyn Van Demark
- Jeff & Laurel Van Den Berg**
Mark & Nancy Wahlstrom
- Daniel “Dan” Beacom**
Margaret Amundson
Ray & Connie Beacom
Thomas & Joy Beacom
Lisa Berens
Teri Bergeleen
Stacy Bloemendaal
Janet Boswell
Jim & Kim Burma
Jeff Dittman
Annie Eichele
Steve & Lavonne Farner
David Flicek & June Nusz
Mr. & Mrs. Christopher Foskett
Jerry & Jill Franken
Tryg & Marie Fredrickson
John, Melissa, Ben, & Jacob Gathje
Jeff & Julie Gednalske

Greater Sioux Falls
 Chamber of Commerce
 Gunderson's Fine Jewelry
 Craig & Kathleen Halverson
 Doug Hansen
 Roger & Doreen Hanson
 Patti Harms
 Gregory & JoAnn Hauglid
 Jeanne Hendricks
 Mike & Cindy Huether
 Jay & Jane Huizenga
 David & Carol Jacobson
 Michael & Kelly King
 David & Deanna Knudson
 Russell & Sherena Kost
 Greg & Lynn Krell
 David & Virginia Kull
 Lost & Found Employees
 Bruce Marek
 Donald & Anne McCarty
 Stephen & Sandra McCoy
 Patrick McCue
 John & Carol McGrath
 Dr. Michael & Jean McHale
 Linda Mickalowski
 Jack & Lona Miller
 Domenica Mills
 Jeff & Joan Mordhorst
 Jeff & Larae Morlan
 Dr. Jeffrey & Mary Jo Murray
 Irvin & Doreen Nash
 Chuck & Kristine Nelson, CPA
 Randy & Karla Nordman
 Jennifer Olson
 David & Peggy Perez
 Lori Perkins
 Tim & Susan Peterson
 Bruce & Leah Reuwsaat
 Charles & Rhonda Reuwsaat
 Caroline Rexwinkel
 David Rice & Elizabeth Perez
 James & Angela Ricketts
 Darrell & Beth Schmith
 Bradley & Teresa Schoenfelder
 Scott & Kim Soldatke
 Fran & Gail Sommerfeld
 Russ Sorenson & Roberta Barber
 Sorlien Electric Inc.
 Tony & Jane Tatone
 Judge Stuart & Pam Tiede
 Brian & Gloria Top
 Janene Trammell-Polk
 Kent & Jill Vetrus
 Lynn Voss
 Tom & Kim Wadsworth
 Steve & Angela Watkins
 Chad & Jane Weber
 Rick & Mary Weber
 James & Heidi Welbig
 Jim & Deb Whitcomb
 Erin & Karin Wiese
 Jeff & Rhonda Wilber
 Donna Williams
 Daniel & Gale Wray



**DAN
BEACOM**
Friend of CHS



**ROBERT "BOB"
BOREM**
Friend of CHS



**BEVERLY
HORSTED**
Friend of CHS



**MARGARET "BUNNY"
HOWES**
Friend of CHS &
Shelter for Family Safety

Joyce Beckman
Dennis & Tammy Mettler

James "Jim" Beddow
Timothy Dougherty &
Karen Schreier

John Benson
Wendell & Merline Kock

Helen & Maurice Biernbaum
Robert Biernbaum

Sheila Bjorklund
Staci & James Kropuenske

Deborah "Deb" Bloker
Roger & Bonnie Olson

Gary Bockorny
Melissa Edman
Staci & James Kropuenske

Karlene "Karli" Boelter
Joan Ahlers
Jim Boelter
Garry & Barbara Burnham
Carol Entringer-Tjarks
Donna Hewitt
John & Muriel Kolbeck
James & Kathleen Lunder
Allan & Brenda Mammenga
Robin Miller
Joyce Olsen
Kathy Schuknecht

Harlyn Bokker
Allen & Gloria Brown

Robert "Bob" Borem
David Bode
Eugene Borem
Vincent & Anne Cannella
Cute Smiles 4 Kids
Diamond & Huels, PC
Dana & LaDawn Dykhous
Randi Grauman
David & Deanna Knudson
Lloyd & Cindy Levidow

Bill & Lorrae Lindquist
Sandra Malin
Vicki Mann
Linda Mickalowski
Royce Minkove & Mort Needle
Jeff & Larae Morlan
Susan Petkus
Adam Polson
Mariano & Catherine Sanito
Howard & Jinger Sokol
Ron Starkman
Rick & Mary Weber
Mel & Jane Weinstein

Jim Boweter
Joan Ahlers

Benedict Boyer
Staci & James Kropuenske

Christopher "Chris" Braden
Jon & Gloria Olson

Harven Brass
Wendell & Merline Kock

Arleen Browen
Bob & Cherie Goehring

Lawrence Browen
Bob & Cherie Goehring

Kay Buchheim
Dan & Rita Renner

Melanie Bucknell
Rhonda Baker

Sally Bull
Peter Brochhausen
Donna Jacobs

Marlys Bullington
Richard & Donna Wilson

Kenneth "Ken" Campbell
Edwin & Janice Baatz

Monique Carlson
Jim Carlson

JC Chambers
Bob & Cherie Goehring

Lawrence "Larry" Chase
Nancy Chase
Connie Colwill

Brenda Chase Stoops
Nancy Chase
Connie Colwill

Bob Clark
Bobbie Jones

Erin Condron
Colin Fitzsimons

Jim Crowl
Jon & Gloria Olson

Darrell Demaray
Roger & Judith Johnson
Roger & Bonnie Olson

Marla DeSollar
Joan Ahlers

Petra Dilley
Allen & Gloria Brown

Mary Ann Domeier
Eugene & Katie Wendinger, Jr.

Don & Mary Dorsman
Timothy Dougherty &
Karen Schreier

Ann Doyle
Judge Stuart & Pam Tiede

Dale Dressen
Allen & Gloria Brown

Alice Dunn
Allen & Gloria Brown

Elaine Dwire
Lisa Ellefson

Stephen "Steve" Elkjer
Bill & Cheryl Taylor

Wesley Erdahl
Beth Erdahl

Thomas Erickson
Terry Jacobson
Mike & Shirley Leimbach

Howard Everett
Bobbie Jones

Glenda Finch
Leon & Linda Meiburg

Michael "Mike" Forrester
Terry Jacobson

Todd Foster
Leo "Bud" Skancke

Lyle Frederickson
Allen & Gloria Brown

Mark Fuerst
Dennis & Tammy Mettler

Elmer Garness
Kevin & Stephanie Manson

Kaye Geraets
David & Jean Rave

Randi Gerlach
Randi's Family & Friends
Kiley Riedel

Sioux Falls City Football Club LLC

Charles "Chuck" Gerner
John & Valoy Nordlie

Mary Louise Glann
Robert & Kathleen Paul

Margaret Godsk
Allen & Gloria Brown

Susan Goens
Walter & Heather Salis

Lenita Groos
Jerry & Jill Franken
Family of Lenita Groos
Dean & Peg Gulbranson

John Gross
Roger & Bonnie Olson

Bobby, Phil & Stephen Gural
Kenneth & Jacqueline Kessler

Cynthia "Cyndi" Haberer
Candy Koehn-Lauck & Ray Lauck



FRANKLIN "BIFF" JONES

Friend of Shelter for Family Safety



MARGARET KROPUENSKE

Mother-in-Law of Staci Kropuenske Shelter for Family Safety Staff



ROBERT LEONHARDT

Father of Ross Leonhardt Shelter for Family Safety Staff

Marvin Hannemann
Roger & Bonnie Olson

John Hansen
Millie Buche

Doris Hanson
Duane Cudmore
Marilyn Johnson
Doris Nelson

John Hanson
Elaine Hedberg

Robert Hanson
Brenda Ludens

Larry Haug
Merlin & Barbara Davis
Nicholas & Angel Reiff

Todd Hauge
James & Joanne Belbas
Arnie Hauge

Tommy "Tom" Henriksen
Bob & Cherie Goehring

Thomas "Tom" Herbert
Leon & Linda Meiburg

Roger Hindbjorgen
Curt & Julie Anderson Friesen
Bob & Cherie Goehring

Norm Hines
Glen & Caren Straatmeyer

Gene "Bud" Hoffman
Tom & Linda Bunkers

Mary Ann Hohman
Bob & Cherie Goehring

Maxine Hohn
Sharon Kangas

Richard Holt
Allen & Gloria Brown

Dorothy Hooks
Donna Thomas

Beverly Horsted
Chad & Amy Cantin Anderson

Michael & Susan Anderson
Bill & Andrea Christensen
Double H Paving Inc.
Daryl & Susan Eichacker
Rick & Marcia Entwistle
John & Laura Folkers
Rodger & Shelly Simantel Horr
Michael & Cheryl Immeker
Sharon Johnson
Daniel Kippley
Gary & Pamela Kludt
Knife River South Dakota
Aaron & Kimber Severson
Bill & Lori Sutton
Judge Stuart & Pam Tiede
Harold & Jan Viereck
Paul & Christy Williams
Lawrence & Ann Wold, III

Margaret "Bunny" Howes
Baily & Kathy Aalfs
James & Deborah Abbott
Richard & Camille Alick
Orrin & Karen Anderson
Linda Baker
Rhonda Baker
Paul & Erika Batcheller
Patrick Beckman
Bender Commercial
Real Estate Services
Kevin & Susan Benson
John & Kathleen Billion
Robert & Jeannie Blackman
Martha Brost
Michael & Mary Brzica
Jim & Kim Burma
Chris Cahill
Douglas Charlson
William & Katherine Clayton
Randy & Ann Cowan
Steve & Betty Crim
Lynette Cross
Kent & Carolyn Cutler

Sharon Cutler
Dacotah Bank
Darrold & Linda Dean
Teresa Dodson
Daniel & Laura Donohue
Thomas & Kareen Dougherty
Jeffrey & Hattie Edman
Steve & Kris Egger
Rick & Marcia Entwistle
Tom & Heather Ewing
Cy & Sandy Farner
Susan Fitzgibbons
Daniel & Jolynn Foley
Steve & Allison Garry
Tom Graham
Gretchen Graves
Russell & Carol Greenfield
Audrey Harrington
John & Molly Heisler
Michael & Shelley Homa
Howes Oil Company
Andy & Jessa Howes
Hal & Susan Howes
Michael Howes
Lisa Howorth
Alan & Carol Johnson
Gregory & Meg Johnson
Leni Johnson
Sharon Johnson
Gene & Cynthia Jones, Jr.
Joshua Homes/Tim & Dawn
Stenberg
Dan & Beckie Kaufmann
Klaudt Service LLC
Charlie & Judy Kneip
John Knudtson &
Sadie Dardis-Knudtson
Karen Koob
Douglas & Sandra Leafstedt
Legacy Law Firm PC
Craig & Pat Lloyd
Tom & Susan McDowell

Garry Meyer
Scott & Anne Meyer
Amy Mickelson & Bill Haugen
Dr. Milton Mutch & Ellie Marshman
Arnold & Rebecca Osmundson
Dr. Gregory & Nicole Osmundson
Jeff & Carol Parker
Ron & Bev Parsons
Gary & Linda Pashby
Dr. Michael & Karen Pekas
Catherine & Lawrence Piersol
Marlene Rance
Paige Rickert
John & Kay Rozell
Phil & Jimmie Rysdon
Janice Schneekloth
Michael & Gloria Simpson
Carolyn Steinborn
Daniel & Bette Stevens
Bill & Cheryl Taylor
Matt & Beth Thornton
Connie Tucker
Dr. Bob & Marilyn Van Demark
Dick & Marilyn Viehweg
Ronald Warren
Anne West
Sue Williams & Greg Kohlenberg
Matthew & Deborah Witte
Jeanne Wold
Lynne Zimmer
Joe & Kristen Zueger

Hayden Hunter
Roger & Bonnie Olson

Kelly Hyland
Roger & Bonnie Olson

Sharon Ivarsen
Sharon Ivarsen

Renaee Jager
Staci & James Kropuenske

Maxine Johnson
Melissa Edman
Staci & James Kropuenske
Candy Koehn-Lauck & Ray Lauck
Janice & Steven Lee
John & Valoy Nordlie

Franklin "Biff" Jones
James & Debra Fuller
Betty Jones

Judge John Jones
David & Pat Nadolski

Wilbur Kalb
Harlen & Chere Kluck

Vince & Bernette Karels
Ken & Marita Karels

Elaine Kearin
Roger & Bonnie Olson

Clare Kerr
Terry Jacobson

Delores Klein
Allen & Gloria Brown

Heather Klein
Allen & Gloria Brown

Dick Knecht
Jeremy & Julie Gibbons

John Knutson
Terry Jacobson

Carrie Koury
Vince & Sandy Jones

Ellen Krell
Bob & Diane Biver

Margaret Kropuenske
Melissa Edman
Elaine Hedberg
Bill & Jolynn Hennrich
Janice & Steven Lee
Tammy & Tom Roberts

Carol Kuipers
Bobbie Jones

Bob & Marlys Kunde
Ken & Marita Karels

Bette Kuper
Allen & Gloria Brown

Jerome Lammers
Allen & Gloria Brown

Nada Landeen
Bernice Lerseth

Juliann Lang
Bob & Cherie Goehring

Raymond "Ray" Lang
Bob & Cherie Goehring

Keith Lange
Del & Karen Brooks

Berdell Langerock
Rowena Langerock

Gary Larsen
Staci & James Kropuenske

Raymond Larson
Allen & Gloria Brown
Eleanor Morse

Dianne Leonard Kaardal
David & Pat Nadolski

Robert Leonhardt
Wallace & Doris Johnson
Jane Leonhardt

David Loving
Peter & Antoinette Loving

Joe Madison
Cholla Foundation

Elaine McInerney
Ed Weiland

Carole McKenney
Troy & Lisa McKenney

Jamie McManus
Terry Jacobson

Cheryl McMillan
Roger & Marcia Bunger

Wayne McNeil
Elizabeth Blosser

Beverly Melmer
Bill & Jolynn Hennrich

James "Jim" Mendenhall
Bob & Cherie Goehring

Bev Meyer
Frank Smith

Donald Meyer
Sharon DeHaan

Harry Meyer
Wendell & Merline Kock

Margaret Meyer
Wendell & Merline Kock

Jerome "Jerry" Michael
Glenda Stene

Lowell Miles
Wendell & Merline Kock

Patrick Miller
Carol Fuss
Curt & Sharon Helfenstein
Kevin & Carol Huether
Teresa Jahner
Steven & Susan Miller
Kay Mower-Davidson
Tom & Carolyn O'Meara
Dean & Franki Parson
Wanda Wiechmann

Wanda Miller
Terry Jacobson

Annie Moeller
Marjorie Anderson

Ruth Morrill
Bill & Jolynn Hennrich

Madison Grace Morrison
Mitch & Katie Morrison

Daniel & David Mulder
Leon & Shirley Mulder

Thomas Mutschelknaus
Bob & Cherie Goehring

Chad Nelson
Robert & Sharen Nelson

Quintin Nemmers
Allen & Gloria Brown

Mark Newberg
Glenda Stene

Tanya "Tany" Nichols
SueAnn & Patrick Mullaney
Nancy & Thomas Schuelke
Roger & Annette Weinacht

Verle O'Connell
Terry Jacobson

Olin Odland
Marilyn Odland
Larry & Marlene Weires

Frank Ogle
Jon & Gloria Olson



**ALMA
RICHARD**

Friend of
Shelter for Family Safety



**MARLIN "MARLEY"
SLAGLE**

Father of Theresa Schreiner
CHS Staff



**MARIAN
SULLIVAN**

Friend of CHS
Past Board Member



**BONNIE
TSCHETTER**

Friend of CHS

Jon Olson
Thomas & Elizabeth Hartman
Dennis & Allison Hippen
Jennifer Johnson
Gary & Kathleen Kasten
Gloria Olson
Robert Olson
Pat Rice

Waneta Ortbahn
Timothy Dougherty &
Karen Schreier

Charlotte Oviatt
Gene & Martha Fauth

Cynthia Oye
Terry Jacobson

Marilyn Parham
John & Valoy Nordlie

Richard Paulson
Ingrid Place

Frank Petereit
Curt & Julie Anderson Friesen

Joyce Peters
Merlin & Barbara Davis

Robert "Bob" Pfeifer
Terry Jacobson

Steven Pofahl
Kaylene Pofahl

Howard Priesz
Glen & Carla Eng
Mike & Shirley Leimbach
Glenda Stene
Rick & Mary Weber

Helen Pusi
Carol & Perry Amussen

Blanche Quincey
Allen & Gloria Brown

Ivan Rand
Harlen & Chere Kluck

Joan Rasmusson
Allen & Gloria Brown

Elizabeth "Betty" Redl
Dennis & Tammy Mettler

Rodney Renaas
Roger & Bonnie Olson

Alma Richard
Rosalie Beyer
Ben DeMarais
Cynthia Erlandson

Shawn Fischer
Jan Gillespie
Judith Herdina
Sophia Holly
Jean Jones

Mary Labrie
Amy Lake

Bonnie McCue
Taylor McMillan

Norbert Miles
Karin Miles Wiese
Joseph Mullins

Thomas & Mary Parlin
Richard & Diane Rahm

Navin Ramalingam
Penny Schlotter

St Mary's Parish
Beverly Welch
Max & Heidi Williams
Eleni Zimiles

Jane Rogers
Jonathan & Marci Burdick
Greg Erickson
Roxane Geisler
Nooney & Solay LLP
Erdean & Verna Olsen

Phyllis Rogers
Rick Hars & Sharon Yerigan-Hars

Dorothy Roskens
Angela & Michael Tiedeman

Michael Rothenbuehler
Allen & Gloria Brown

Dolores "De" Salviola
Allen & Gloria Brown

Jane Ann Schaefer
Vernon & Ruth Schaefer

Dean & Maralyn Schnaible
Paula Goedken

Brady Schneider
Allen & Gloria Brown
Tom & Linda Bunkers

Dean Schreurs
Allen & Gloria Brown
Leo "Bud" Skancke

Sidney Schroeder
Staci & James Kropuenske

Marcene Scully
Roger & Judith Johnson

Dianne Shjegstad
Carolyn Drew

Dennis Shultz
Jason & Tami Brown
Kevin & Maureen Maeschen
Melvin & Beverly Maeschen

Leo "Bud" Skancke
Mary Dressing
Lisa Hardy
Greg Johnson
Craig & Gail Kennedy
Austin & Rebecca Parks
Peggy & Jeff Warkentien

Marlin "Marley" Slagle
Janet & Denis Andersen
Alan & Laura Goins
Theresa Schreiner
Rick & Mary Weber

Lisa Solberg
Bill & Lorraine Lindquist

Julane Sorenson
David Sorenson

"Rod" Sorrell
Liz Lloyd

Beverly Splonskowski
Stuart Splonskowski

Annabelle Stach
Shirley Stach

Paul Stach
Shirley Stach

Linda Stengel
Bill & Lynne Byrne
Jim & Nini Hart
Tim & Susan Peterson
Tammy & Tom Roberts
Jo Anna Warder

Marian Sullivan
Stan & Elaine Deelstra
Mike & Lori Hahn
Randall & Nancy Hall
Sharon Johnson
Thomas & Kay Krause
Christine Lindberg
Bill & Lorraine Lindquist
Tom & Susan McDowell
Scott & Diane Miller
David & Linda Munson
MVB Properties Inc.
Sioux Falls Christian Schools
Sullivans
Timothy & Susan Thune
Jon & Suzanne Veenis
Rick & Mary Weber

Clarice Tebbe
Merlin Tebbe

Kolton Temple
Wendell & Merline Kock

Brian Thill
Dana Cable
Bobbie Jones
Daniel Roach
Paula Thill
Lyle Van Hove

Forrest "Fuzzy" Torgrude
Roger & Bonnie Olson

Keith Trowbridge

Les & Linda Brandhagen
Melanie & Mark Jasper
Mary & Glenn Kelly

Bonnie Tschetter

Glenn & Judith Adler
 Stan & Linda Albrecht
 Rhonda Baker
 Elaine Benson
 Nona Bixler
 Stewart & Vicki Bofenkamp
 Terry & Joy Bracy
 Timothy & Mary Braithwaite
 Randy & Sonia Gaardner Bury
 Rick & Lynette Clark
 Click Rain Inc.
 Daniel & Carol Cressman
 The Creswells
 Kris Denevan
 Elroy & Karen DeSchepper
 Ashton Dockendorf
 Jim & Diane Eckert
 Craig & Gail Eichstadt
 The Event Company
 Anthony & Kristi Ficker
 Jo Foster
 Dan & Katie Fritz
 Garrett & Emily Hartwig
 Lyndon & Barbie Hofer
 Jodi Janssen
 Thomas & Rosanne Krier
 Noel & Mary Lais
 James & Deborah Lichty
 Brenda Locke
 Rodney & Carol McGinnis
 Julie Mehlhaff
 Forrest & Doreen Miller
 SueAnn & Patrick Mullaney
 Craig & Jeanne Norgaard
 OLE LLC
 Lori Perkins
 Timothy & Lynnette Qualm
 "Remember When" Ladies
 Cleveland School Group
 Scott Riley
 John & Cheryl Risty
 Roy Rogers & Jan Haugen-Rogers
 Steve & Kathy Sanford
Kathy Schellhammer
 Jon & Jessie Schmidt
 Karin Scott
 Jason & Amanda Seykora
 Patrick & Lori Seykora
 Nancy Skattum
 Payton Smith
 Judy & Laurie Tidemann
 James & Debra Tingelhoff
 Orlen Tschetter
Paul Tschetter
 Craig & Selena Unterbrunner
 Christina Wallum
 Ron Wick
 Nic Wildeman

Bradley & Veronica Wille
 Robert Williamson
 Dr. Brian & Susan Wiswall
 Lindsey Wolf

Harold Ulfers

Larry & Marlene Weires

Grace Ulrikson

David & Jean Rave

Myrl Unzelman

AGC of SD, HHU Chapter
 Bob & Mylene Bangasser
 Troy & Colleen Bassett
 Derry & Jan Benson
 Harold & Helen Boer
 Scott Burke
 Michael & Kristi Cornette
 Cutler Law Firm
 DPS Investments LLC
 First Rate Excavate Inc.
 Michael Howes
 Susan Larson
 Lauer Capital Management LTD
 Legacy Law Firm PC
 Craig & Pat Lloyd
 Roger & Bonnie Olson
 Dieter Proehl
 Runge Enterprises Inc.
 Eloise Sinjem
 Soukup Construction Inc.
 Chuck & Val Sutton
 Robin Unzelman
 Rick & Mary Weber
 Troy & Monica Wilson

Roger Van Vorst

Susan Brue

Kevin Vanderwerf

Dawn Peters

Douglas Vaughn

Terry Jacobson
 Roger & Bonnie Olson

Carol Voegeli

Susan Brue

Johnnie Von Eye

Mettler's Locker

Nomi Vos

Keith & Liz Kirkebak

Larry Wallace

Staci & James Kropuenske

Bob Warder

Rick & Mary Weber

Gloria Weber

Bob & Cherie Goehring

Melissa Weideman

Linda Prestin

Raymond James "Jim" Wennblom

Raymond & Connie Gustafson
 Pat Wennblom

Dick Westhoff

Rotary Club of Downtown
 Sioux Falls

Don Willard

Merlin & Barbara Davis

Patrick Wingen

Theresa Wingen

Alice Witmer

Bob & Cherie Goehring

William "Bill" Witmer

Bob & Cherie Goehring

Bruce Zellmer

Bob & Cherie Goehring

Ila Zellmer

Bob & Cherie Goehring

Derek Zenk

Dennis & Tammy Mettler

Thomas "Tom" Zimmer

Bank of America
 Charitable Foundation
 Lynn Fratto

Lola Zwart

Allen & Gloria Brown

Jacque Zweep

Jacque's Fund*
 Jacque's Fund*



In any given
 moment we
 have two
 options:
 to step
 forward into
 growth or
 step back
 into safety.

ABRAHAM MASLOW



A SPECIAL OPPORTUNITY

FOR THOSE 70½ YEARS OLD AND OLDER

You can give any amount (up to a maximum of \$105,000) per year from your IRA directly to a qualified charity such as Children's Home Society (CHS) without having to pay income taxes on the money. Gifts of any value \$105,000 or less are eligible for this benefit and you can feel good knowing that you are making a difference at CHS. This popular gift option is commonly called the IRA charitable rollover, but you may also see it referred to as a Qualified Charitable Distribution, or QCD for short.

Learn more at: chssd.org/support

Why Consider This Gift?

- Your gift will be put to use today, allowing you to see the impact of your giving immediately.
- You may be able to use your gift to satisfy all or part of your Required Minimum Distribution (RMD), if applicable.
- You pay no income taxes on the gift. The transfer generates neither taxable income nor a tax deduction, so you benefit even if you do not itemize your deductions.
- Since the gift doesn't count as income, it can reduce your annual income level. This may help lower your Medicare premiums and decrease the amount of Social Security that is subject to tax.

Children's Home Society does not give tax advice. We recommend visiting with your tax professional to determine if this giving option is right for you.



HONOR GIFTS

Gifts Given January 1–December 31, 2023

Honor gifts are given in gratitude, in tribute, or in celebration of family members, holidays, birthdays or special occasions. Honor gift card packets are available by request. Due to space limits, only gifts of \$20+ are listed. Children’s Home Shelter for Family Safety gifts are noted in **bold** type.

Patricia Allison
Carlene Oines

Marilyn Bates
Curb Creations

Rhianna Besler
Angie & Casey Besler

John Brewer
Patricia Schiro

Amy Carter
Helen Oppold Blair Memorial Fund*

Ava & Grace Chapman
Emily Chapman

**City of Sioux Falls
Engineering Department**
JSA Consulting Engineers/
Land Surveyors Inc.

**City of Sioux Falls Parks &
Recreation**
JSA Consulting Engineers/
Land Surveyors Inc.

Dennis Daugaard
Brad & Tarri Minor

Dennis & Linda Daugaard
Maggie Pauley

Diane DeVito
Lewis & Renee Weinberg

Jill Dillenburg
Geri Hento

**Kyle, Billie, Abigail &
Eddison Dressing**
Brian & Pam Dressing

Brian Field
Architecture Incorporated

Flynn, Saylor & Hayes
Jamie Risse

Mya Frybarger
Lewis Realty–Keller Williams BH

Nikki Galloway
Blend Interactive Inc.

Warren Graber
Kristina Graber

Judy & Tim Heiman
Steven Priest

Bill & Jolynn Hennrich
Staci & James Kropuenske

Phyllis Herzog
Pat Kaiser

Kevin Hohn
Sea Foam Sales Company

Steve & Pam Jansa
Erin Jansa

Ann Lucy
Noble Child Inc.

Nicholas Liesinger
Avera Heart Hospital &
North Central Heart

Liz Lloyd
Robert & Virginia Colangelo
Todd & Christine Ernst
Mary Lloyd Huber
Deb Kohler
Craig & Pat Lloyd
Elizabeth Thorkelson
Rick & Mary Weber
Workplace Marketing
Insurance Advisors

Christina Lynn
Sioux Falls Estate Planning Council

Vicki Madsen
Marlys Drewes

Linda Mickelson Graham
Tom Graham
Amy Mickelson & Bill Haugen
David & Val Mickelson
Mark & Cynthia Mickelson

Tip Miles
Miles & Valentine Rausch

Carolee Miller
Koch Hazard Architects

Marcy Moen
Sensational Smiles Dentistry

Todd Moulton
Dakotaland Manufacturing–
Erfman Family Charitable Fund*

Gary & Carol Nelson Family
Carol Nelson

Mason O’Farrell
Koch Hazard Architects

Hunter Otten
Vern Eide Motorcars Inc.

Brianna Palomaki
Bruce Palomaki

Paul, Chandler & Austin
Edith Hoogendoorn

Lisa Riddle
Minnehaha County
Family Violence Council
Brooke & Matthew Murphy

Tom Roberts
St. Mary’s Parish, Winona, MN
Thrivent Financial

John & Kay Rozell
Rob & Amy Trask

Staff of Risen Savior
Carol Nelson

June Scher
William & Xanady Schlotter

Landi Schweigert
Midco
Minnehaha County
Family Violence Council

Peg Seljeskog
Dustin & Sarah Morrison

William Smith
Banner Associates Inc.

Carolynn Stavenger
James & Sheryl Nieman

Tim Stotz
Sioux Falls Estate Planning Council

Bob & Maureen Suga
Lee Gertsen & Kim Suga

Tim & Tori Thaler
Ken Thaler

Laurel Trautwein
David Earnest

Tammy Thompson
Mike Edmundson

Hugh Venrick
Avera McKennan Hospital &
University Health Center

Zane Vogt
Dr. Bruce & Judy Vogt

Joan Berg & Terry Wassenaar
Eleanor & Richard Leibbrand

Megan Weisenbach
Sensational Smiles Dentistry

Linda Wells
Gary & Connie Schickedanz

Kirk “Popeye” Wilson
Dakotaland Manufacturing–
Erfman Family Charitable Fund*



The butterfly is proof
that you can go through
a great deal of darkness
and still become
something beautiful.

UNKNOWN



10th Annual
**KIEFFER
SANITATION**

TRASH CAN OPEN

Event Date:

June 9, 2023

The Golf Club at Red Rock, Rapid City

NET PROCEEDS: \$46,165

DESIGNATION:

Children's Home
Child Advocacy Center

**THANK YOU TO OUR SPONSORS,
DONORS AND VOLUNTEERS!**

Title Sponsor & Host

Kieffer Sanitation &
Waste Connections
(10 YEARS)

Eagle Sponsors

Black Hills Rubble
Management &
Boom Construction
Compass One Healthcare
TNT Homes &
Construction LLC
Zeisler Construction

Hole-In-One Sponsor

Transource Truck &
Equipment

Hole Prize Sponsor

Central States Fair

Birdie Sponsors

Big Truck Rental
Buffalo Wild Wings
(10 YEARS)
Fisher Beverage Co.
(10 YEARS)

Par Sponsors

Black Hills Truck & Trailer
GenPro Energy Solutions
Impact Environmental
Group

McNeilus Truck and
Manufacturing
Pacific Steel & Recycling
Rapid City Rush Hockey
Rush Refuse Systems
TEC Equipment
Unify Home Lending

Ice Sponsor

Arctic Glacier

**Kieffer Sanitation
Trash Can Open
Planning Committee**

Seth Green, Chairperson
Trey Hanks
Lauren Hueber
Jennifer Nielsen
Dereck Parce
Theresa Schreiner
Abby Sharp
Stacey Sharp



34TH ANNUAL
Rotary Club of Rapid City Rushmore

GOLF TOURNAMENT

Event Date:
JULY 31, 2023

NET PROCEEDS:

\$75,928

DESIGNATION:

Children's Home
Child Advocacy Center
Endowment



THANK YOU TO OUR DONORS, SPONSORS & VOLUNTEERS!

Title Sponsor & Host

Rotary Club of
Rapid City Rushmore

Presenting Sponsor

TruStage

Flight Sponsors

RESPEC
The UPS Store

**Diamond, Cart &
Gift Sponsors**

Black Hills
Animal Hospital
Black Hills
Shooters Supply
Brazos Roofing
Costello Porter
Law Firm
Dacotah Bank
Dean Kurtz
Construction
ForeverLawn
Black Hills
Dr. Stuart Fromm, MD
Black Hills Orthopedic
& Spine Center
Midwest Solutions Inc.
Monument Health

Sander Sanitation
Service/Hills Septic
Service
Seacrest Wealth
Management

Gold Sponsors

Black Hills
Community Bank
CARSTAR Collision
Center
Dakota RV
Dave Schmidt Agency/
Farmers Insurance
First National Bank
First Western Federal
Savings Bank
Gateway Autoplex
Gustafson Builders/
Heavy Constructors Inc.
Ketel Thorstenson LLP
Neugebauer's Jewelry,
Design & Service
Northwest Pipe
Fittings Inc.
Omnitech Inc.
Rotary Club of
Rapid City Rushmore

Skins Game Sponsor
LEI

Hole Sponsor

Charles & Jill Arbeiter
Avid4 Engineering
Black Hills Animal Hospital
Black Hills Federal
Credit Union
Black Hills Oral Surgery &
Dental Implant Center
Dr. Jay A. Crossland
Black Hills Tire
Butler Machinery
David & Kimberly Dolan
Edward Jones—
Kyle Bargmann
Fisher Beverage Company
ForeverLawn Black Hills
Good Samaritan Society/
Sanford Health
H-S Precision
Kieffer Family Dental
KLJ Engineering
Pioneer Bank & Trust
Print Mark-et
Security First Bank

The Skin Institute at
Rapid City Medical
Center LLP
Valley Sweeping
White's Queen City Motors

Rotary Golf Committee

Jeffrey A. Meyer,
Chairperson
Bob Baker
Kim Baker
Mark Barry
Scott Barbour
Kyle Bargmann
Mark Crosswait
Darla Crown
David Dolan
Rick Edelen
David Ellenbecker
Dana Foreman
Dr. Mike Fuller
Tiffany Gikling
Seth Green
Roger Heacock
Ron Jeffries
Jerome Johnson
Janet Kahler

Jeff Kingsbury
Doug Lind
Bruce Nearhood
Debra Niemi
Mark Schreiner
Theresa Schreiner
Bo Seacrest
Abby Sharp
Larry Stevens
Pat Sutliff
Dr. Willis Sutliff
Tyler Trevillyan
Dr. George Twitero
Shari West Twitero
Marcia Whiting

THANK YOU TO OUR DONORS AND SPONSORS!



CARING FOR THE
kids

NET
PROCEEDS:
\$513,322

DESIGNATION:
CHS Program
Support

Event Dates:

Celebration Banquet
SUNDAY,
AUGUST 6, 2023

Golf Classic
MONDAY,
AUGUST 7, 2023

**Children's
Home
Society**

OF SOUTH DAKOTA

Caring For The Kids

The 27th Annual Caring For The Kids event featured a celebration banquet, car raffles, silent and live auction, and golf tournament to benefit CHS. Golf pro Graham Nash was honored for his many contributions to the Orion Classic golf tournament.

Presenting Sponsor

PIPESTONE

Challenge Donors

Jim & Nini Hart

Banquet Sponsor

POET

Car Sponsor (2)

Schulte Subaru

Champion Sponsors

Avera (2)

Citi

CorTrust Bank

Dacotah Bank

Daugaard for South Dakota

Eide Bailly

First PREMIER Bank

HUB International Great Plains

JDS Industries

MasterCard

Novak Sanitary Service

PREMIER Bankcard

Sanford Health

Schoeneman's Building

Materials Center

Tri-State Wholesale Flooring

Weisser Distributing

Executive Sponsors

CNA Surety

The First National Bank

in Sioux Falls

Lloyd Companies

Maguire Iron

Marsh McLennan Agency

Waterbury Heating & Cooling

Media Sponsors

KELOLAND Media Group

Midco

Midwest Communications

Participant Gift & Cart Sponsor

Graham Tire

Print Materials Sponsor

Sisson Printing Inc.

Signage Sponsor

FastSigns

Volunteer Shirt Sponsor

Dakota Lettering/

Dakota Sports

Beverage Sponsors

Coca-Cola

Dakota Beverage Company

Wine Sponsor

Ellie Marshman

Flight Gift Sponsor

NuStar Energy

Double Hole Sponsors

Boen & Associates

Harold & Helen Boer

Davenport Evans Lawyers

First Bank & Trust

Modern Woodmen

Fraternal Financial/Austin Vanhove

One American Bank

Don & Ann Platt

U.S. Bank

Private Wealth Management

Single Hole Sponsors

Acucare Physical Therapy

Mavis Amundson

Rick & Holly Brunick

Cadwell, Sanford, Deibert &

Garry LLP

Tim Dougherty & Karen Schreier

Envive Chiropractic

Dr. David & Julie Ermer

Fireplace Pros –

Home of BBQ Heaven

The First National Bank

in Sioux Falls

Tim & Somboon Hamel

HUB International Great Plains

Interstate Office Products

Dave & Becky Nelson

NuStar Energy

PIPESTONE

PrairieFire –

Mark & Gretchen Noordsy

Pride Neon Sign Solutions

John & Kay Rozell

Schulte Subaru

Greg & Karen Schultz

Showplace Cabinetry

Chirag & Veronica Shukla

Sioux Empire Optimists Clubs

Stan Graber Financial Services

Bob & Maureen Suga

Bob & Marilyn Van Demark

Vader and Landgraf/Delfield

Van Horn Financial Services

Veritiv

Winsupply of W Sioux Falls

Plumbing & Electric

Workplace Marketing

Insurance Advisors

Individual Golfers

Danny Amundson

Paul Amundson

Paul Connelly

First PREMIER Bank/PREMIER

Bankcard (4)

Kim Larson/Viking Label

Jeff Skinner

Joe Sztapka

Merle Wollman (2)

Auction Donors

A&B Business Solutions

Walt & Jan Bones

Catering By Cleavers

Denny Sanford PREMIER Center

First PREMIER Bank/

PREMIER Bankcard

Gunderson's Jewelry

Hotel On Phillips & The Treasury

Landscape Garden Centers

Michelle & Paul Lavallee

Governor Kristi Noem

Nyberg's Ace Hardware

Ross & Lynn Plucker

Renner Corner Meats

Sanford International

Scheels

Hole Prize Donors

Balk-Phelps Family

David and Patty Bowen

Event Support

Auctioneers –

Dean Gulbranson,

Jim Woster & Terry Brick

Audio Connections –

Jeff Engen & Team

Banquet Voiceovers –

Dakota Video+Post

CHS Kids Music –

Directed by Kiah Norby,

Loving School Music Therapist.

Arranged by Celebrate Church

Music Team Volunteers

Event Supplies Transportation –

Game Plan 4 Hope

Steering Committee

Danny Amundson

Dr. E. Paul Amundson

Erica Krohn

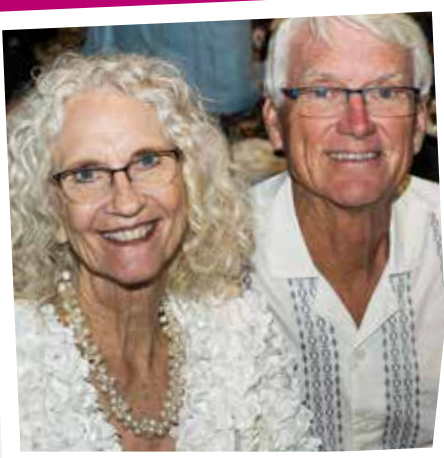
Dan LaRock

Jon Mammenga

Tammy Roberts

Tom Roberts

Rick Weber



CARING FOR THE
kids
classic
A Benefit Golf Event for Children's Home Society



17TH ANNUAL JON CRANE CHS BENEFIT AUCTION

Event Date:
Friday, September 29, 2023

Event founders, Jon and Gail Crane, Denny McKay, and Richard and Rose DuBois, had a vision to showcase the region's top artists, raise funds for Children's Home Society and create opportunities for live-auction artists to mentor, encourage and teach art to children at Black Hills Children's Home.

NET PROCEEDS:
\$164,213

DESIGNATION:
Children's Home
Child Advocacy
Center Endowment



THANK YOU TO OUR FOUNDERS, SPONSORS, ARTISTS, DONORS & VOLUNTEERS!

Leonardo Da Vinci Sponsors

Janet & Deonne Kahler
Jack & Vianne Kucera
Monument Health

Picasso Sponsor

Myles & Jeanette Kennedy

Vincent Van Gogh Sponsors

Mike, Diana & Corrie Day
DeMaris & Erv Nesheim

Botticelli Sponsor

Lampert Properties

Beverage Sponsors

A & B Business Solutions/
Dennis & Lizette Aanenson
Fisher Beverage Company

Media Sponsors

Midco
The HomeSlice Group

Event Committee

Jon Crane
Gail Crane
Lori Deurmier
Diana Duffur-Day
Kara Flynn
Lafawn Janis
Adam Karrels
Denny McKay
Kim McKay
Theresa Schreiner
Abby Sharp
Melissa Wood

FEATURED ORIGINAL ARTISTS

Nancy Ashley	Mark Mordhorst
Jon Crane	Wade Patton
Richard DuBois	Angela Marie Poches
(Donated in his memory by his family)	Gwen Ray*
Jerry Green	Ginny Reinicke*
Bonnie Marion	Sarah Rogers
Sarah S. Miller	Kathy Sigle
Donald F. Montileaux	Mike Wolforth
	Melissa Wood*

*Dream Team Mentor Artists for children at Black Hills Children's Home





Thank you for a wonderful event.





A Benefit for Children's Home Shelter for Family Safety

Event Date:
FEBRUARY 2-3, 2024

This event includes skiing, fat tire biking, snowboarding, family tubing, snow sculpting, Zipfy sled racing and cross-country skiing.

NET PROCEEDS: \$31,512

DESIGNATION:

Children's Home Shelter for Family Safety Program Support

THANK YOU TO OUR DONORS AND SPONSORS!

Title Sponsor
Media One

Event Host
Great Bear Ski Valley

Gold Sponsors
Pipestone

Silver Sponsors
Blue Tide Car Wash
(Sioux Falls & Brookings)
Dan & Jennifer Grider
Koch Hazard Architects
Marsh McLennan Agency
Steve & Kathy Sanford
Showplace Cabinetry

Bronze Sponsors
Associated Consulting
Engineering Inc.
Grossenburg Implement
Stockwell Engineers

Friends of Funski
Cipher Imaging
Aaron Daly
Scheels
Sisson Printing

Media Partners
Dakota News Now
Results Townsquare Media

Other Event Support
City of Sioux Falls Parks
& Recreation
Sioux Falls Bike Racing

Event Committee
Ben Blomberg
Brad Blomberg
Greg Blomberg
Alexa Jerstad
Dan Grider
Kevin King
Staci Kropuenske
Jill Lerdal
Scott Maguire
Brian Rotert
Brooke Wegener
Justin Wulf

Media One Staff
Brad Blomberg
Greg Blomberg
John Fiksdal
Rebecca Goeden
Eva Hofer
Sharon Knoll
Nabin Nakarmi
Jessica Rice
Molly Schenkel



GIFT WRAP BOOTH & RESULTS TOWNSQUARE MEDIA TOY DRIVE

Presented by:
BLUE TIDE CAR WASH
(Sioux Falls & Brookings)

Event Date:
DECEMBER 1-24, 2023



NET PROCEEDS:

\$53,438

DESIGNATION:

Shelter for Family Safety Program Support

Host

The Empire Mall

Presenting Sponsor

Blue Tide Car Wash
(Sioux Falls & Brookings)

Media Partners

Dakota News Now
Midco
Results Townsquare Media

Other Support

Xcel Energy

Volunteers Leaders

Bill Hennrich
Samantha Hill
Elizabeth Hjelm
Laura Hjelm
Rhonda Kelsey
Kaylee Kropuenske
Kristi McKinney
Jen Stahl
Charlotte Schwab
Randy VanDeVendel
Heather Weeg

Results

- Volunteers: **622**
- Volunteer hours: **1,807**
- Gifts wrapped: **5,000**
- Over **500** toys, gifts, clothing and needed items collected for children's birthday and Christmas presents

THANKS FOR YOUR SUPPORT!

Children's Home Society

OF SOUTH DAKOTA

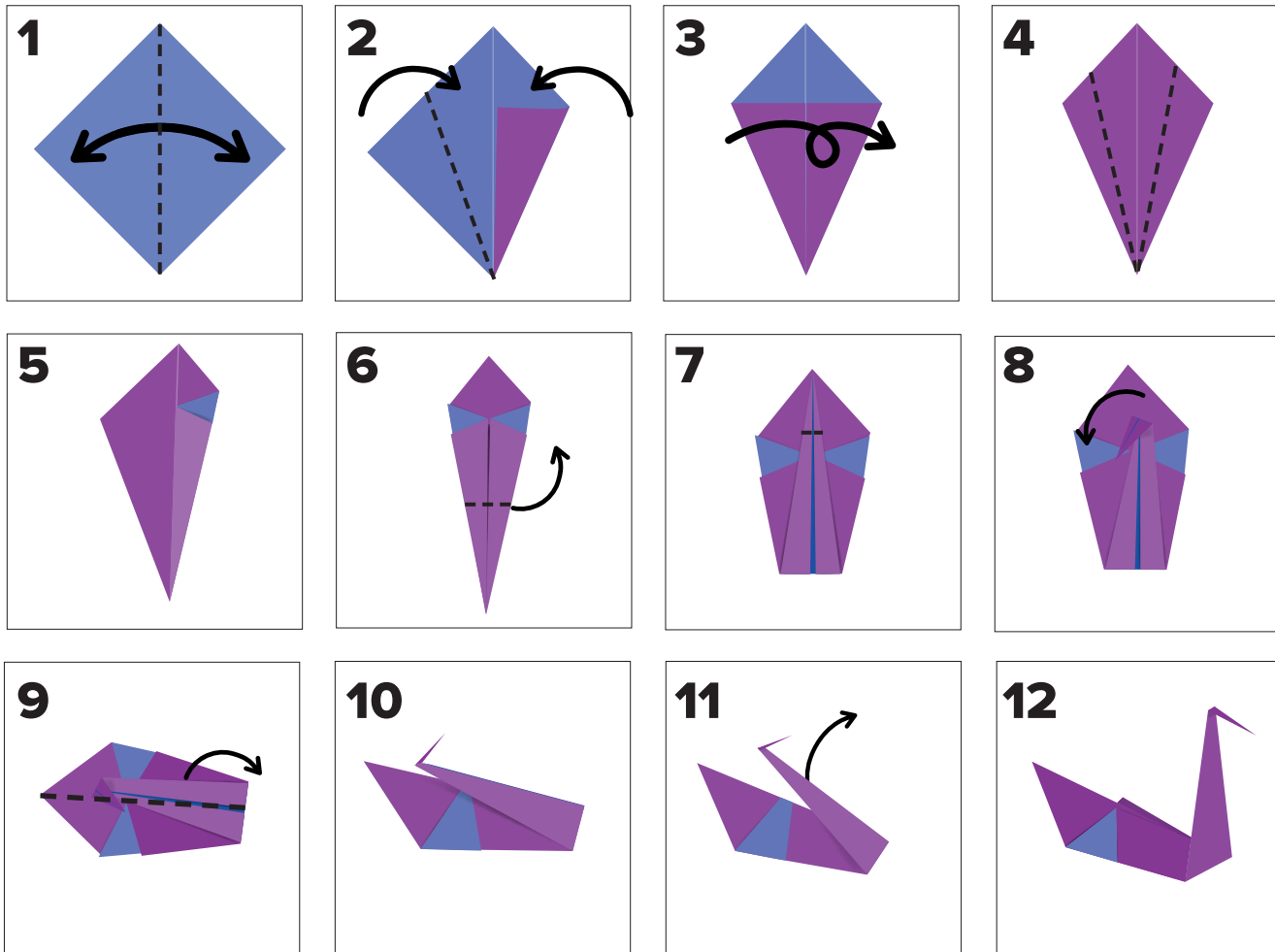


This annual fundraiser in Sioux Falls helps introduce new donors and volunteers during the holidays.

JOIN THE FOLD

1. Use the attached squares of paper to make your own origami swan. There are perforations for tearing into two 4" squares. Follow the instructions shown here or see video instructions at chssd.org/video.
2. If you wish, write a message of hope on the paper.
3. **Mail your swan in the enclosed envelope** (along with a donation, if you choose) and send it to us by June 30, 2024.
4. **We'll add your swan to the community art project!** Over the coming months, people all over South Dakota will fold origami swans for Children's Home Society. The finished art installation will include more than 2,500 swans suspended from the ceiling of our new Sioux Falls dining hall in the fall of 2024!

ORIGAMI SWAN INSTRUCTIONS



MAKE THE BODY

1. **Start with your paper blue side up.** The purple will be the main body color. Fold the paper in half diagonally and unfold.
2. Fold the left and right edges into the middle.
3. Flip the paper over like in Figure 4.

FOLD THE HEAD AND NECK

- 4–6. Fold the left and right edges to the middle.
7. Fold the bottom corner up to the top.
9. Fold down a small section to make the swan's head.

MAKE THE FINISHING TOUCHES

- 9–10. Fold the top side (the swan head side), in half, lengthwise, backward.
11. While holding the bottom (swan body) down, only pull the head and neck up.
12. Decide on a position for the swan's neck and then crease.



To view video instructions, visit chssd.org/video or use the QR code here.

**CHILDREN'S HOME SOCIETY
OF SOUTH DAKOTA**

P.O. BOX 1749
SIOUX FALLS, SD 57101-1749

ADDRESS SERVICE REQUESTED

Nonprofit
Organization
U.S. POSTAGE
PAID
SIOUX FALLS, SD
PERMIT #437

Thank you for your support!

This report honors and recognizes the many friends of Children's Home Society. Our intention is to be inclusive and accurate.

Report any corrections to:

Jon Mammenga

P.O. Box 1749, Sioux Falls, SD 57101-1749 • 605.965.3136
jon.mammenga@chssd.org

As a matter of good stewardship, we try to keep the size and cost of this publication to a minimum. There is a very lengthy list of \$1-\$99 gifts that are not printed. Please know we are just as grateful for the generosity of our unlisted friends!

BLACK HILLS

BLACK HILLS CHILDREN'S HOME

Residential Treatment and School

605.343.5422 | 24100 S. Rockerville Road, Rapid City, SD 57702

BLACK HILLS COMMUNITY BASED SERVICES

Therapeutic Foster Care and Adoption • Family Engagement Services

605.343.2811 | 1330 Jolly Lane, Rapid City, SD 57703

CHILDREN'S HOME CHILD ADVOCACY CENTER • PREVENTION

Prevention, Training and Education

605.716.1628 | 1330 Jolly Lane, Rapid City, SD 57703

SIOUX FALLS

BRIGHT START

Nurse Home Visitation

605.274.0233 | 801 N. Sycamore Avenue, Sioux Falls, SD 57110

CHILDREN'S HOME SHELTER FOR FAMILY SAFETY

Domestic Violence Shelter and Services • Emergency Shelter for Children

605.338.0116 | 113 N. St. Paul Avenue, Sioux Falls, SD 57103

SIOUX FALLS CHILDREN'S HOME

Residential Treatment and School

605.334.6004 | 801 N. Sycamore Avenue, Sioux Falls, SD 57110

SIOUX FALLS COMMUNITY BASED SERVICES

Therapeutic Foster Care and Adoption

605.334.6004 | 4402 E. 3rd Street, Sioux Falls, SD 57103



VISIT US AT CHSSD.ORG

CHS is accredited by the Joint Commission (JCAHO) and licensed by the South Dakota Department of Social Services.

Privacy Policy: To protect the privacy of the children and families we serve, it is our practice (unless otherwise noted) to use names and photos that represent our stories and ensure confidentiality.