

# BETTER TOGETHER

2020 ANNUAL REPORT



CHILDREN'S  
HOME  
SOCIETY





“ Let us put our minds together and see what life we can make for our children.”

SITTING BULL, HUNKPAPA LAKOTA

## BETTER TOGETHER

The mission of Children’s Home Society of South Dakota (CHS) is to empower children, adults, families and communities to be resilient, safe, healthy and strong.

As the oldest nonprofit human services organization in South Dakota, established in 1893, CHS innovates by evolving to meet the changing needs of the people we serve. Our six programs are detailed in the pages of this report.

**Better Together** is one of our fundamental values. It’s because we can only achieve our mission when we work together—with one another; with the people we serve and their families; with donors, volunteers and leaders; and with partners in our communities.



# WHO IS CHS?



We are 330+ employees, along with numerous volunteers, donors and board members.

We are accountants, administrators, advocates, case managers, cooks, coordinators, counselors, directors, forensic interviewers, fundraisers, housekeepers, HR specialists, maintenance workers, marketers, nurses, secretaries, social workers, teachers, therapists, technicians and more.

We are diverse in ability, age, education, experience, race, gender and talent.

We are kind, tenacious, passionate, professional and mission driven.

## – OUR VALUES –



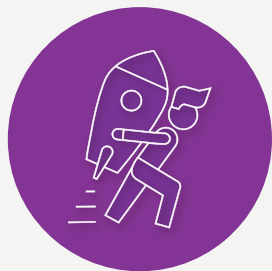
### **We are better together.**

We collectively steward the mission and resources of Children's Home Society and work together to shape the future for children, families and our community.



### **We choose kindness.**

We bring out the best in ourselves and others by cultivating an environment of growth, understanding and respect.



### **We are tenacious.**

We do whatever it takes to live our mission and light a path forward for children and families facing adversity.



“I am immensely proud to share the CHS story! As one of the region’s leading trauma informed social service agencies, we are fully committed to helping heal and prevent trauma so all South Dakotans have the opportunity to lead safe, healthy and fulfilling lives.”

MICHELLE LAVALLEE  
CEO



EACH YEAR, CHILDREN'S HOME SOCIETY SERVES THOUSANDS OF PEOPLE AND FAMILIES FROM EVERY COUNTY IN SOUTH DAKOTA.

# Rising to the Challenge. Together.

Nationally and locally, 2020 was an extremely challenging year.

## CHS is proud of our hard work, the commitment of our staff and our unified response, which included:

**Following safety measures**, such as screening, quarantining, social distancing, hand-washing, masking and cleaning

**Adjusting** by putting up tents to replace home visits; creating fun activities; helping cover staff absences by changing schedules; providing encouragement, etc.

**IT commitment and flexibility** in setting up staff to work remotely as needed

**Shifting to video or phone conferencing** for therapy, nurse visits and Prevention and Community Based Services training events (an unexpected silver lining of the pandemic was seeing dramatic increases in participation)

**Adapting major fundraising events** in Sioux Falls and the Black Hills to ensure safety

**Functioning with no volunteers**, which affected dozens of activities and programs, including Christmas, Big Buddies, Sunday School, sports teams on campus, field trips, outings and much, much more

**A focus on uniting and uplifting staff** through enhanced communication, transparency and engagement, as well as increased compensation, additional benefits, diversity education, leadership training and more.



At Children's Home Society, we believe in the power of teamwork. That's why we say we're better together. It's why our six programs deliver outstanding outcomes, year after year. And it's why we are united by the philosophy of bringing the finest care and services to the most vulnerable people in South Dakota.



# HOME IS WHERE THIS HEART IS

## What becomes of the children who leave the CHS Residential Care programs?

Some former residents have come back to say hi and stay for a few minutes.

But a very special one has come back to say hi and stay for 18 years—and counting.

April Roselles, Lead Team Coordinator at Black Hills Children's Home (BHCH) was nine years old when she first arrived at Children's Home. "I came with both my siblings; I have a younger brother and a younger sister," she says. She and her siblings had been in foster homes prior to BHCH.

"My parents had a lot of difficulties. My mom had me when she was 17. Her mom died two weeks before I was born. My father was not a good man then. They both had drug addictions, alcohol addictions, things like that, so they just

# Residential Treatment and Day School

Black Hills Children's Home (BHCH) and Sioux Falls Children's Home (SFCH) are psychiatric residential treatment centers and special education schools for children, ages 4-14, with severe emotional and behavioral needs. Many of the children are victims of domestic violence, neglect, and emotional, physical, and sexual abuse. It is also part of the CHS mission to partner with caring parents to help their children who have emotional or behavioral needs.

## – 2020 SERVICES PROVIDED –

<b>BLACK HILLS CHILDREN'S HOME</b>	
Residential Treatment & Education	58 Children
<b>SIoux FALLS CHILDREN'S HOME</b>	
Residential Treatment & Education	98 Children
Day School Program	40 Children
<b>2020–21 Program Budget:</b>	<b>\$15,062,617</b>
<b>Charitable Support Needed:</b>	<b>(18%) \$2,684,287</b>

couldn't attend to their kids," April says. Her father was in and out of the State Penitentiary during her childhood.

"I was at BHCH for nine months," April says. "I think my brother was here around two years and my sister for about two and a half years."

April knew her mother loved her and the stay at BHCH became a pivotal moment. "She came here for therapy," says April. "I really think this place helped her a lot. I remember she got an award, I think from Fred Tully—a parenting award for being consistent, showing up and being involved. That was nice for her at a time when she probably felt she wasn't being a very good parent. Affirmation is always important."

### Returning home

April's home life improved, with no more stays in foster or residential care. But she never forgot BHCH. While still in high school, April began working at BHCH as a part-time counselor. After graduation, she took a

full-time position, becoming a team coordinator. Eventually she married, had children, and began to enjoy a fulfilling relationship with her parents, who had changed and are still doing well today.

When she decided to continue her education, April received the CHS Madden Family Scholarship to attend Western Dakota Tech in Rapid City. She earned an Applied Science in Surgical Technology degree and worked at Monument Health as a Surgical Technologist in the operating room. Then she was approached to return to BHCH.

April answered the call, leaving behind her new career. And she has no regrets. "I'm glad to be back because I really believe my heart is here," she says.

About working with the children at BHCH, April says, "I can relate to the difficulties these kids go through. I can be very empathetic and truly understand where they're coming from. And then I can show them that they can be okay, they can overcome this."

"This isn't just a job. You really have to have your heart involved, and you have to want to do this. You also have to be optimistic and know that there are going to be hard days, but we'll get through it. There's more good than bad. There's way more good than bad."

"Basically I came back to give back what I was given, because I literally know this place changed our lives," April says. "I wanted to come back and provide that to other kids."

BHCH Lead Team Coordinator April Roselles spent time at Children's Home during her childhood. She chooses to work at CHS because she wants to "give back what I was given."

**“If you need help, the staff will help you. And you can always tell them what you’re feeling.”**

– MIA



## AN EXTRAORDINARY TRANSFORMATION

### Sometimes becoming ordinary is the most extraordinary thing that can happen.

Mia’s early years were extraordinary—in the worst way. By age four she had been sexually abused by a relative. She was removed from her mother’s home and her father took custody of her.

But her dad’s job involved frequent travel, and he wasn’t able to care for a young child. He left Mia with various people for various lengths of time. “We don’t even know how many different people he left her with. Were they safe people? Did they care for her? Did they abuse her?” says Kelly Van Den Berg, CHS Family Therapist.

When Mia was seven, Child Protection Services intervened. Parental rights were terminated. Mia lived in a few foster homes, but her behavior was challenging and she was referred to SFCH.

For a year and a half, Mia’s behaviors, including swearing, threats, extreme physical aggression and sexual acting out, did not improve and were disruptive to other children.

“It was more than just the typical defiance we see from kids,” Kelly says.

“Mia’s example of how adults care for kids was not accurate, not safe and not healthy. As staff tried to care for her, even with daily tasks like helping her comb her hair, she would be resistant because she had learned not to trust anyone.”

Staff began to consider a higher level of care for Mia, such as the Human Services Center in Yankton.

#### **Solution, support and success**

The small Intensive Program at SFCH doesn’t often have openings. But staff thought outside the box and figured out how to get Mia into this program.

The higher staff-to-child ratio, structure and routine turned out to be transformative. “She learned that she didn’t have to act out negatively to get attention. We taught her about using her words, sorting out her feelings and learning what helped her feel better,” says Kelly.

Over the course of two years, staff worked with Mia to build healthy attachments and relationships. “For her to be able to trust a person that she didn’t know to take care of her and keep her safe—it was just remarkable.”

“Mia just blossomed and became such a delight and a joy. It was such a turnaround. She had accepted help and caregiving to the point where she flourished and became a role model on the unit. She was helpful with younger kids and would encourage kids who were struggling.”

When Mia was ready to transition to foster care, the SD Department of Social Services happened to learn of Alice, a new foster parent. Everyone agreed she would be a great match for Mia.

“Alice had finished her trainings, but then COVID happened,” says Kelly. Everything was

uncertain. Staff didn’t want to get Mia’s hopes up if placement couldn’t happen; at the same time, they didn’t want Alice to lose interest.

“We introduced them over video calls and phone calls, which is different from what we typically do. But they had great conversations and got to know each other.”

“When they met for the first time, Mia just ran up and hugged her,” Kelly says. “It gives me goosebumps just thinking about it!”

About three months after they met, Mia left SFCH for her foster home. “It’s such an amazing

story,” Kelly says. “Alice is fantastic and both of them are so caring, willing to accept help and learn about one another.” The new family uses counseling available through CHS’s Therapeutic Foster Care program.

Today, Mia enjoys the true blessing of an ordinary life. She and Alice like to do ordinary family activities. They joke around in ordinary ways. Mia goes to school, has new friends, and looks forward to summer—like an ordinary child—which she has worked so hard to become.

# Community Based Services (Foster Care and Adoption)

Therapeutic Foster Care (TFC) serves children of all ages who have moderate emotional and behavioral needs, usually from abuse or neglect. TFC offers a healing family experience to prepare children for reunification or adoption.

Adoption Services: Wendy's Wonderful Kids (WWK) works to find adoptive families for children of all ages who are considered hard to place. WWK believes that no child is unadoptable.

Post Adoption Services include therapy, family support, training and referrals.



## ADOPTIVE PARENTS SHINE BRIGHT



Adoptive parents Megen and Chris with their daughter Jenny, who they adopted when she was 13, along with a few of the family's pets.

### – 2020 SERVICES PROVIDED –

#### BLACK HILLS AREA

Therapeutic Foster Care  
Wendy's Wonderful Kids  
Post Adoption Services & Support

23 Children  
27 Children/8 Finalized  
5 Children & 3 Families

#### SIOUX FALLS AREA

Therapeutic Foster Care  
Wendy's Wonderful Kids  
Post Adoption Services & Support  
Beyond Consequences – Foster/Adoptive Parent Training

16 Children  
23 Children/2 Finalized  
27 Children & 16 Families  
48 Attendees

2020–21 Program Budget:  
Charitable Support Needed:

\$1,116,379  
(27%) \$313,160

### The idealized adoption story involves an infant, a grateful couple and a happily ever after.

However, reality is usually much messier and more complicated. Many adoptive parents don't know what they're getting into. Many adopted children are scarred by trauma, even as babies. Many aren't able to be adopted until they're much older.

That was the case with Jenny, who was part of Wendy's Wonderful Kids, a program of the Dave Thomas Foundation for Adoption. Program recruiters use a child-focused model to find homes for older and hard-to-place children.

Jenny was 11 when CHS Adoption Specialist Tina Graber began working with her. "She'd been on my caseload since March 2018. Jenny was a resident at SFCH from 2012 to 2014. She was in foster care for more than 4,500 days (most of her life)," Tina says. And in 2020, Jenny was adopted.

### Growing a family through adoption

While Jenny's background is unusual, the story of Chris and Megen, her adoptive parents, is no less remarkable.

The couple knew they wanted a family. Chris teaches middle school science and Megen is a mental health therapist.

"My parents are older," says Chris. "They're in their mid-seventies, so I wanted our kids to remember their grandparents instead of just looking at photos or a videotape. That was what happened to me."

"We know some people who are foster families, and being in the jobs that we're in, we saw the need," says Megen. "We just decided that that was how we wanted to build our family."

"You hear a lot of heartbreaking stories of kids who age out and don't get that family. I just hated that. Every kid deserves people who are in their corner for the rest of their life."

"We know how to deal with that age group, much more than we know how to deal with diapers and that stuff," Megen says. "We felt it would be a good fit for our family, with what we like to do and our routines. Having a child who can come with us to do things—instead of always trying to find a babysitter—there are just a lot of perks to having an older child."

### A family by choice

Chris and Megen chose Jenny. But Jenny also chose them.

"One of the interesting things that the judge said at the adoption was that not many people get to choose their parents," says Megen.

"She has no reason to trust adults. There's nothing in her background that says adults are safe to trust. People think, oh, that's so great of you for taking her in. Yeah, but that's also so great of her to give us a chance."

Jenny has become more vocal and self-confident since the adoption, in addition to growing several inches. She likes school and enjoys choir, dance, art, FFA and playing Minecraft.

"She likes puzzles. Oh, and she's been building a lot with Legos lately," says Chris. "She and I are starting a large pirate ship kit. And she's into cats and cats. And some more cats."

"And cats," says Megen.

# Bright Start

A nurse home visitation program, Bright Start provides care for at-risk families during pregnancy and after delivery. Nursing services include prenatal, maternal and infant/child health and development assessments and education; and parenting, health, safety and nutrition education. Services may continue until the child's second birthday. Bright Start also helps link families with community resources, such as prenatal, postpartum and pediatric medical care; family planning services; and mental health services.

## Even for folks born in the U.S., navigating complex systems as a young adult can be difficult.

For Santa and her husband BK, who came to the U.S. from a refugee camp in Bhutan, expecting twins was a blessing—and overwhelming. A friend referred Santa to Bright Start.

“Santa enrolled about three weeks before her twins were born,” says Nurse Supervisor Kathy Schneider. The couple lived with a relative and had no safe place prepared for the babies to sleep. Kathy helped Santa make an appointment with the federal Women, Infants and Children (WIC) program that helps meet a wide range of expectant parents’ needs.

“They had one car, so I gave her taxi vouchers to get to the hospital in case labor started while her husband was at work,” Kathy says. “I also told her about the free car seat installation provided at local fire stations and helped her sign up at Teddy Bear Den.”

“All of this took place at our first visit,” says Kathy.

### Listening, learning and growing

In the Bright Start program, building a trusting relationship between the nurse and the family is essential for success.

Fortunately, Santa and Kathy bonded quickly. Although they’d only met a few weeks earlier, Santa invited Kathy to the hospital the day after she gave birth to her two beautiful baby girls, Emmi and Esmee.

“Kathy is kind, caring and loving,” Santa says. “She really helped and taught me everything—how to take care of a child.”

The sheer volume of information and referrals Kathy provided to the family demonstrates the important role that Bright Start played in their lives. It included:

- Teaching Santa** how to diaper, breastfeed and bathe the babies
- Helping obtain** reflux medicine for the babies
- Referring Santa** to the Sanford Safety Center for a home safety walk-through
- Providing education** on tummy time, potty training, thumb-sucking and weaning from the bottle
- Educating Santa** on plagiocephaly and torticollis; when the pediatrician referred Emmi for a helmet for plagiocephaly, she helped Santa use it consistently
- Referring Santa** to the free dental clinic; the girls have gone once or twice each year
- Accompanying Santa** to the hospital when she took Esmee to get tubes in her ears

**Assisting the family** in planning a trip with the twins to Nepal

**Educating the family** on COVID when the pandemic hit

**Encouraging Santa** to read, sing or tell stories to the girls every day, helping her get a library card and learn about free children’s activities at the library



Santa and her husband BK (not pictured) came to the U.S. from a refugee camp in Bhutan. Twins Emmi and Esmee were born shortly after the family began working with a Bright Start nurse.



## BUILDING TRUST, EMPOWERING FAMILIES

**Educating Santa** on positive discipline, routines and understanding various behaviors

**Helping the family** find ways to pay medical bills not covered by insurance

**Providing information** on buying a home and helping the family find a moving truck

**Connecting the family** with in-home Early Head Start services

Santa’s time with Bright Start passed quickly. Today, Emmi and Esmee are healthy, smart and thriving; Santa is a confident and loving mother. The family recently moved into a beautiful home of their own.

When the family graduated from the program, Kathy brought stuffed bears, backpacks and cupcakes to celebrate their success. “We’re really going to miss her,” says Santa.

### – 2020 SERVICES PROVIDED –

Families Served	213
Nurse Home Visits	2,197
Therapist Home Visits	207

2020–21 Program Budget:	\$857,821
United Way Support:	(52%) \$443,100
Charitable Support Needed:	(.005%) \$5,140



# HOPE IS STRONGER THAN FEAR

**What happens when a dad tells his daughter, “You’re dumb and stupid. You’re not worth anything. You’re never going to be anything?”**

What happens when her childhood is shaped by addiction and abuse?

Here’s what can happen. The little girl believes her dad. She grows up feeling worthless and gets involved with abusive men because to her, that’s normal. She has issues with stability, homelessness and poverty. And when she’s in her 60s, she finds herself living in terror with her boyfriend, who has become a violent and unpredictable meth addict.

“I was scared to death of him,” says Sharon. “I kept fearing every time I’d go to bed—is he going to come in and stab me? Is he going to shoot me? Is he going to rape and kill me? I couldn’t sleep. I couldn’t eat. I was always on edge wondering what today was going to bring me. For seven months I lived like that.”

After an assault so brutal that neighbors contacted police, Sharon was brought to Children’s Inn.

Staff welcomed her with open arms. “Oh, they made me feel special. They’re so compassionate and understanding and patient,” Sharon says.

At first Sharon was afraid that her abuser might find her. Staff assured her that she was safe at Children’s Inn.

## **An ending and a new beginning**

After helping Sharon heal from her injuries and obtain a protection order, staff focused on helping her find safe, affordable housing. Case Managers helped her get out of her lease and secure an apartment that met her needs.

They also helped Sharon get to doctors’ appointments and assisted with her court hearings.

The next challenge was moving. Sharon had no vehicle and no family or friends to help. Again, Children’s Inn Case Managers stepped up, finding a local moving company that would move Sharon’s furniture and belongings at no cost.

When Sharon learned that her abuser had finally left the state, she was finally able to relax. Despite injuries, chronic health issues, the trauma of being abused and lack of financial resources, she kept her spirits up. And she knows she can still turn to Children’s Inn for help.

As we go to press, the Gift for Good Children’s Inn Endowment Campaign is beginning. We look forward to expanding the capacity of Children’s Inn to better serve our communities. To learn how you can partner with CHS on this important endeavor, please contact Rick Weber, Foundation Director, at [rick.weber@chssd.org](mailto:rick.weber@chssd.org) or 605.965.3127.

**“The staff at Children’s Inn is just awesome,” she says. “It takes a good heart and patience and commitment to deal with people that are emotionally, physically and mentally going through this. They made me feel loved.”**

Sharon encourages other victims of domestic violence to seek help. “Talk to a sister, a brother, an aunt, an uncle, a social worker, a teacher, a pastor—somebody that will listen and try to guide you the right way, to find the help to get out of that situation, because no one needs to be abused, psychologically or physically.”

“We have to tell each other, ‘You’re worth it. Don’t let anyone ever tell you you’re not worth it, because you are. You’re special.’ Each and every one of God’s children is special.”

## Children’s Inn

Children’s Inn provides free services for women, children, and men who are victims of domestic violence, stalking, elder abuse, sexual assault, and child abuse or neglect.



### – 2020 SERVICES PROVIDED –

Emergency Shelter Intakes:	
Adults	406
Children with Parent	343
Children in Protective Custody	102
Children in Respite Care	5
Crisis Phone Calls	3,263
Drop-in Counseling: Individuals Served	2,226
Outreach Counseling Sessions	922
Women’s Support Group Sessions	52 Women, 42 Sessions
Parenting Classes	40 Parents, 80 Sessions
Domestic Violence Community Education	883 Attendees / 106 Presentations

2020–21 Program Budget:	\$3,053,846
United Way Support:	(14.2%) \$435,000
Charitable Support Needed:	(50%) \$1,513,085



# Child Advocacy Center

The Child Advocacy Center (CAC) serves children who are alleged victims of sexual abuse, physical abuse or who have witnessed violence. Like more than 900 other CACs nationwide, the Children's Home Society CAC provides forensic interviews, support to families and coordinates specialized medical examinations.

These services eliminate the need for repeated interviews and examinations by multiple investigating parties. Referrals come primarily through law enforcement and Child Protection Services.



## TACKLING TRAUMA WITH TEAMWORK

At the Child Advocacy Center (CAC), every child we see has suffered trauma.

Alyssa's story was no exception. An elementary-school-aged child, she told her mother that a relative had sexually abused her. Her mom believed her (which isn't always the case) and contacted police.

When we met Alyssa, she and her mother were anxious and afraid. For her mother, the information was new; she struggled with shock and pain. "What she told us at first was just the beginning," says Jennifer Arnold, Child and Family Advocate. "That's very common. Kids will give piecemeal disclosures and gauge how you respond. Sometimes they're not ready to talk."

Eventually, Alyssa shared that the sexual abuse had been happening for years. Her mother was devastated.

"First we make sure kids are safe, that the offender is not in the home," Jennifer says. "We help the child and the family get the services they need to heal. The healing process supersedes everything else. No matter what prosecution looks like, the child's experience does not go away."

### Working together to protect children

CAC is an integral part of a multi-disciplinary team that includes the SD Department of Social Services, law enforcement (state and federal), the medical community, mental health and the State's Attorney's office.

In Alyssa's case, the investigation revealed that Alyssa's offender had multiple victims.

Because of Alyssa's strength and bravery, these additional victims had the opportunity to receive early intervention and to someday have safe and healthy adult relationships.

"We have seen this young girl flourish since her first visit," says Jennifer. "The last time she was in, she was bubbly, standing up straight and interacting with a sense of ease. It was quite the change!"

"This family touched us so much that CAC and CHS Community Based staff in the Black Hills skipped our usual holiday gift exchange and pooled our money to help Alyssa and her family have an extra special Christmas."

"I will never forget the call from Alyssa's mom when she received the package. She said, 'You all made our Christmas magical. I will never be able to thank you guys enough for everything.'"

"Working together, they've blessed us, and we've blessed them," Jennifer says. "A little kindness goes a long way."

### – 2020 SERVICES PROVIDED –

Forensic Interviews 324 Children

2020–21 Program Budget: \$497,290

Charitable Support Needed: (63%) \$313,160





Terry Liggins became a Master Trainer in the South Dakota ACEs and Resiliency training offered through the CHS Prevention program. He has since started a nonprofit that works with at-risk youth and vulnerable adults.

A child experiencing traumatic events doesn't know trauma is occurring. Most children assume that their lives are normal—because they don't know any different.

The story of Terry Liggins, 35, of Sioux Falls, SD, illustrates this. Originally from north Omaha, NE, Terry succeeded despite growing up in a tough environment. He became a first-generation college student on a track and field scholarship at the University of South Dakota.

Flourishing in the university setting, Terry was elected student body president and won the 60-meter hurdle national championship at the NCAA Division II Indoor Track and Field Championships in 2008. He graduated with a bachelor's in Criminal Justice and went on to earn a master's in Public Administration,

## HELPING PEOPLE CLEAR LIFE'S HURDLES

### Types of Adverse Childhood Experiences (ACEs)

- Physical, sexual or emotional abuse
- Physical or emotional neglect
- Household member mental illness, violence, substance abuse, divorce/separation and incarceration

CHSSD.ORG/PREVENTION

## Prevention, Training and Education

The goal of CHS Prevention, Training and Education is to prevent child abuse in South Dakota. Statewide education, trainings and events focus on teaching the public and professionals how to recognize and respond to child abuse, properly handle child abuse disclosures, understand Adverse Childhood Experiences (ACEs) and implement trauma informed care.

### – 2020 SERVICES PROVIDED –

Abuse Prevention Education

4,641 Attendees / 206 Presentations

2020–21 Program Budget:  
Charitable Support Needed:

**\$240,667**  
**(57%) \$136,071**

Then a poor choice landed Terry in federal prison for a white-collar crime. After his release in 2016, he began working with an addiction recovery coach who brought up the topic of trauma.

“I learned that some of my experiences in childhood were traumatic events,” he says. In his neighborhood, there were drugs, gangs and violence; he survived his first drive-by shooting by age six; later his younger brother was killed in a drive-by shooting. But Terry also experienced trauma at home.

In 2017 Terry joined the Master Trainer cohort of the South Dakota Adverse Childhood Experiences (ACEs) and Resiliency Training offered through the CHS Prevention program. He soon discovered how ACEs had affected his own journey.

“I learned that I had six ACEs (out of a possible 10), which meant I had many traumatic experiences,” he says. “Knowing this gave me a clarity about my own upbringing and thereby an understanding of my behaviors, beliefs and mindset.”

“When I was able to learn about the neuroscience, it allowed me to be more comfortable with myself and who I had become,” says Terry. “It also gave me the knowledge that ‘hurt people hurt people.’ I developed compassion and empathy for my mom and dad so I could forgive them, and not be bitter and blaming.”


All along, Terry had planned to go into a helping profession. “I wanted to be like the people who helped my family when I was young,” he says. Combining this ambition with his new understanding of ACEs and resiliency, he founded The Hurdle Life Foundation, a nonprofit based on the core belief that a trauma informed community is in the best interest of everyone.

The foundation works with at-risk youth from 11-17 and vulnerable adults, providing trauma informed support through mentorship, inspiration and education—working together to help them clear life's hurdles—as Terry has done himself.

“The Rapid City Police Department has seen a great deal of benefit from having received training for all of our personnel on ACEs. The theme coming from our veteran officers was that they wished that they had this training early on in their careers. This effort has been combined to create an introduction to trauma informed policing, which we are building upon by adding continued education hours to further our growth and response to trauma.”

### DAVE KINSER

RESEARCH AND DEVELOPMENT SPECIALIST, RAPID CITY POLICE DEPARTMENT



“ I can do things  
you cannot, you can  
do things I cannot;  
together we can  
do great things. ”

MOTHER TERESA



CHILDREN'S  
HOME  
SOCIETY



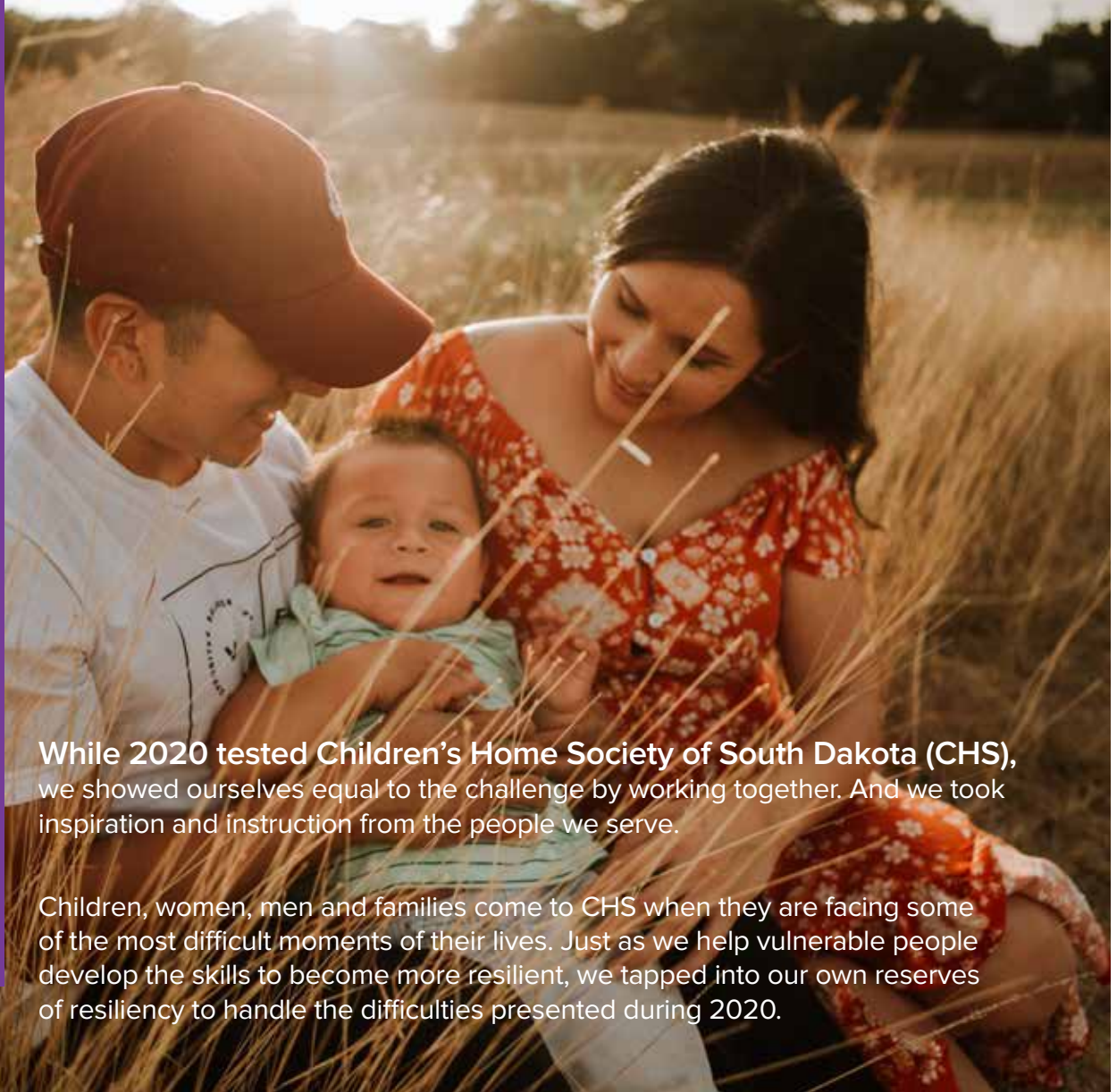
CHS is accredited by the Joint Commission (JCAHO) and licensed by the South Dakota Department of Social Services.

**Privacy Policy:** To protect the privacy of the children and families we serve, it is our practice (unless otherwise noted) to use names and photos that represent our stories and ensure confidentiality.

2020  
**ANNUAL  
REPORT**



# BETTER TOGETHER



While 2020 tested Children’s Home Society of South Dakota (CHS), we showed ourselves equal to the challenge by working together. And we took inspiration and instruction from the people we serve.

Children, women, men and families come to CHS when they are facing some of the most difficult moments of their lives. Just as we help vulnerable people develop the skills to become more resilient, we tapped into our own reserves of resiliency to handle the difficulties presented during 2020.



**TIM HAMEL**  
PRESIDENT,  
CHILDREN’S HOME  
SOCIETY BOARD OF  
DIRECTORS

“Better Together is the realization that the talents, experiences, and perspectives of a group of individuals committed to a common mission will always produce a more successful outcome.

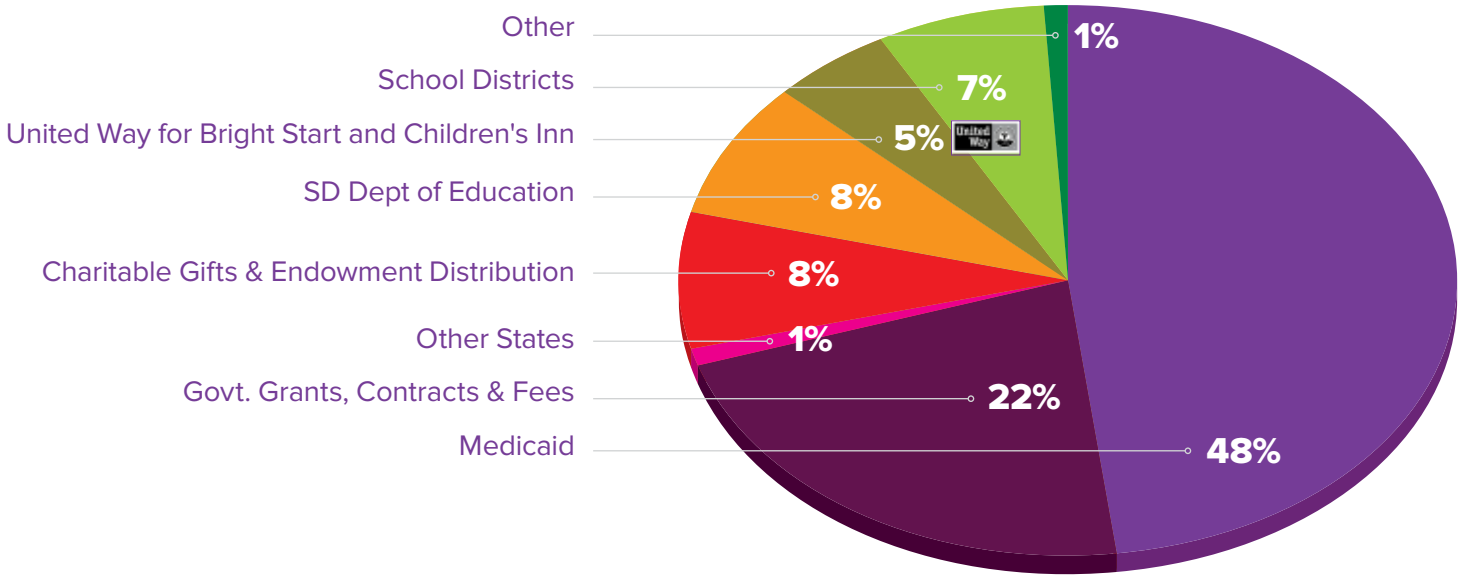
We can learn from each other, challenge each other, inspire each other, and finally rejoice in our accomplishments with each other. That is so much more fulfilling than going it alone.”



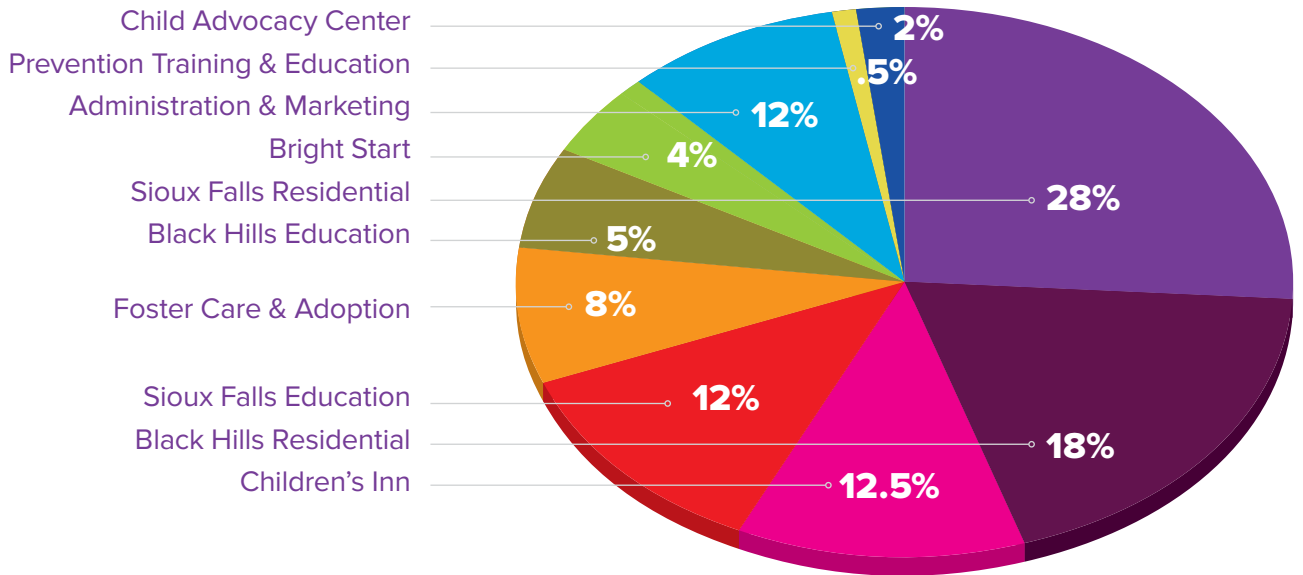
**JULIE ANDERSON  
FRIESEN**  
PRESIDENT,  
CHILDREN’S HOME  
FOUNDATION BOARD  
OF DIRECTORS

“Our mission, at its heart, is to serve a broken and needy world, and the people we serve often feel alone and full of fear. When we do the work of our mission, not only are we reminded that utilizing the full gifts of our board, staff, donors, and volunteers makes us better together, but we make it clear to those we serve they are not alone. We will harness all we have to help them and their families get better—together—as well.”

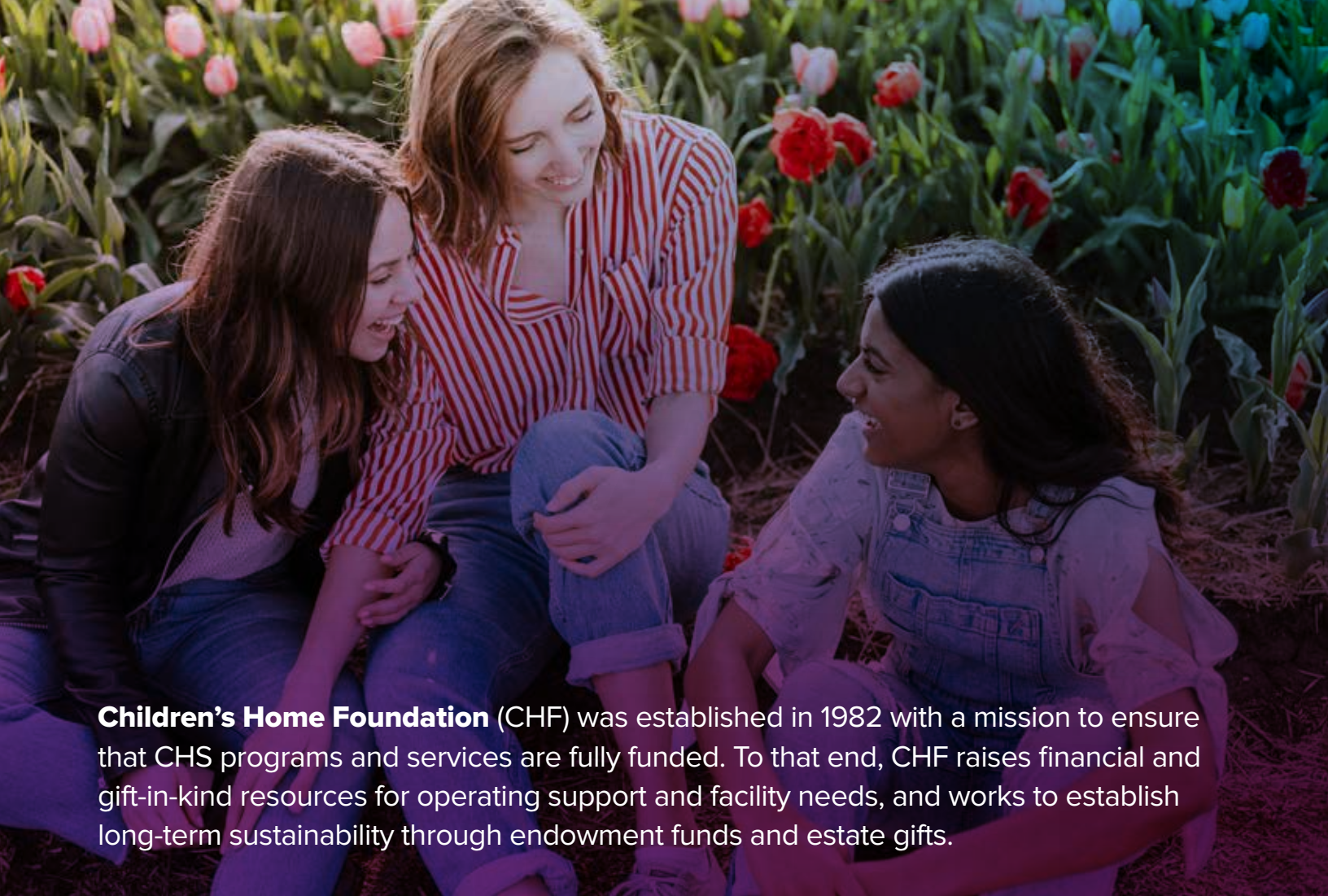
# Children's Home Society: Financial Report FY2020



**INCOME: \$18,492,002**

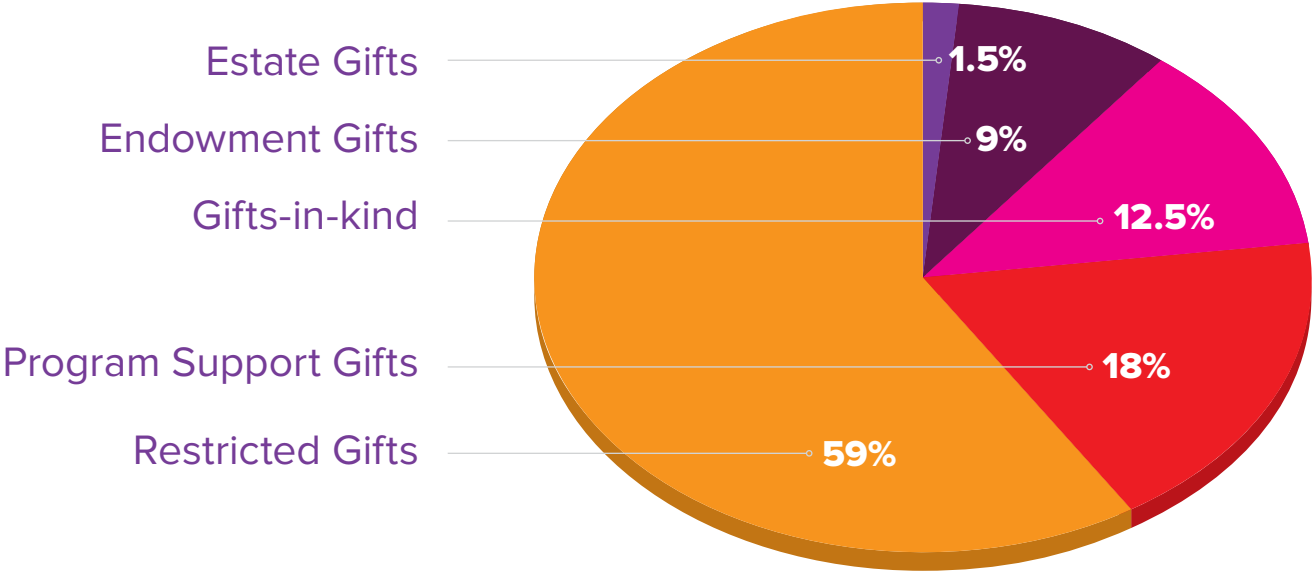


**EXPENSES: \$20,065,976**



**Children’s Home Foundation** (CHF) was established in 1982 with a mission to ensure that CHS programs and services are fully funded. To that end, CHF raises financial and gift-in-kind resources for operating support and facility needs, and works to establish long-term sustainability through endowment funds and estate gifts.

### Children’s Home Foundation: Funds Raised FY July 2019–June 2020



**TOTAL: \$8,810,239**

NOTE: All totals reported include gifts to Children’s Inn.



# GUARDIANS OF THE CHILDREN

Guardians of the Children is a legacy program established to recognize and honor those people whose vision, philanthropy and love of children have been demonstrated by a planned estate gift to Children’s Home Foundation. Funds from the Foundation support programs of Children’s Home Society including Black Hills Children’s Home, Sioux Falls Children’s Home, and Children’s Inn.

- |                                      |                                    |   |  |
|--------------------------------------|------------------------------------|---|--|
| Ken & Sally Anderson                 | Arnie Hauge                        | Stephen R. & Mary Lynn Myers            | Jack & Linda Stengel                             |
| Tom & Rebecca Batcheller             | Phil Helland                       | Dave & Pat Nadolski                     | Kathryn Stevens                                  |
| Kevin & Robin Baum                   | Ryan & Leah Hofer                  | Bruce & Kim Nearhood                    | Dr. Cameron & Susan Stokka                       |
| Yvonne Behrends                      | Susan M. Hughes                    | Jeff & Muriel Nelson                    | Jeannette Stowsand                               |
| Chuck & Joan Benson                  | Sherri Jackson                     | Erv & DeMaris Nesheim                   | Glen & Caren Straatmeyer                         |
| Bob & Deb <sup>†</sup> Biernbaum     | Pam Taylor & Steve Jansa           | Dr. Wesley Nord                         | Judy Stransky                                    |
| Donald & Leona Bierschbach           | Craig & Louise Johnson             | Bob & Cathy Novak                       | Dr. Robert & Maureen Suga                        |
| Allen M. Bishop                      | Jeff & Doreen Jorgenson            | Berniece Oberling                       | Marian D. Sullivan                               |
| Kerry & Donna Boekelheide            | Duncan & Ellie Keirnes             | Tom & Michele Olsen                     | Dave & Nancy Thomas                              |
| Harold & Helen Boer                  | Dan & Arlene Kirby                 | Lee <sup>†</sup> & Lynn Otis            | John & Lee Thomas                                |
| Dick & Jane Bohy                     | Joe & Jennifer Kirby               | Michael & Karen Pekas                   | Fred & Maryann Tully                             |
| Rob & Leslie <sup>†</sup> Brandner   | Scott & Marilyn Korsten            | Dale & Kathy Peterson                   | Myron & Joan Van Buskirk                         |
| Rachel & Rheann Brekke               | Fern Lair                          | Don & Ann Platt                         | Leonard Walde <sup>†</sup> & Shirley Lenz-Walde  |
| John & Jan Brewer                    | Peter & Janis Lee                  | Shawn & Michelle Poe                    | Beth Walker                                      |
| Dick & Sue <sup>†</sup> Brown        | Olivia Lima                        | Janice Radach & Family                  | Gordy & Tami Wallenstein                         |
| Franklin A. & Elizabeth K. Burke     | Vernon & Donna Lind                | Marlene Rance                           | Tom & Kathy Walsh                                |
| Bill & Lynne Byrne                   | Bill & Lorrae Lindquist            | Warren & Rhea <sup>†</sup> Reed         | Rick & Mary Weber                                |
| Jim <sup>†</sup> & Nancy Christensen | John & Barbara Lockwood            | Merlin & Bev Riedel                     | Linda Wells                                      |
| Doug & Darla Crown                   | David <sup>†</sup> & Rita Loving   | George & Donna Roberts                  | DeAun West                                       |
| Rich <sup>†</sup> & Sharon Cutler    | Pamela Madsen                      | John & Kay Rozell                       | Drs. Robert <sup>†</sup> & Carolyn Fassi Wharton |
| Dennis & Linda Daugaard              | Vicki Madsen                       | Art & Maggie Russo                      | Dick & Donna Wilson                              |
| Michael & Diana Day                  | Jack <sup>†</sup> & Ellie Marshman | Al Schoeneman                           | Joe & Karin Youngberg                            |
| Jeff Denison                         | Larry D. & D. Jean Matthesen       | Don Schuur                              | Thomas & Lynne Zimmer                            |
| Jim & Susan <sup>†</sup> Dodson      | Mac & Bev McCracken                | Ed & Peg Seljeskog                      |  |
| Don <sup>†</sup> & Miriam Dunmire    | Tim & Diane Meyer                  | Dr. John Spangler                       |  |
| Dave & Cathy Eddy                    | Linda Mickelson Graham             | Glenn <sup>†</sup> & Mary Jane Stalheim |  |
| Steve & Kris Egger                   | Patrick & Barbara Miller           | Jim & Carolynn Stavenger                |  |
| Steve & Allison Garry                | Mike & Lisa Modrick                | Mark & Jennifer Stavenger               |  |
| Tom & Margaret Geertsema             | Robert & Deborah Mudge             | Pastor Carli Steffes                    |  |
| Jim & Nini Hart                      | Kent & Cathy Mundon                | Dennis <sup>†</sup> & Glenda Stene      |  |

<sup>†</sup> Deceased

## Help Secure the Future of CHS

Since the early 1900s, caring friends have helped CHS survive challenging economic times by providing bequests from their estates. Today, donors are using a wider variety of gift vehicles to ensure that CHS can care and advocate for children and families well into the future. In addition to making a bequest through a will or trust, friends often designate CHS to receive memorial gifts.

Making CHS the beneficiary of a life insurance policy or retirement plan is another popular option. For larger estates, Lead Trusts and Charitable Remainder Trusts are advantageous gift vehicles.

Unless designated for a specific purpose, legacy gifts are used to grow the endowment from which a board-designated percentage is distributed annually to fund CHS programs and services. To include CHS in your will, the most common bequest language is:

**I bequest (description of gift) to Children’s Home Foundation to be used to support the operations of Children’s Home Society of South Dakota.**

Specific designations may be made to programs of CHS. For example, a legacy gift can be designated to Children’s Inn.

For more details, visit our website: [chssd.org/support/planned-giving](https://chssd.org/support/planned-giving)

Become a Guardian of the Children by making a gift through your will, trust, or retirement plan. For more information, contact Rick Weber: **605.965.3127**

## Legacy Gifts

Unless otherwise restricted, estate gifts to Children’s Home Foundation are used to fund, in perpetuity, CHS programs and services through annual distributions from our endowment.

### LEGACY GIFTS RECEIVED IN 2020:

Anonymous	\$8,000.00
Ralph and Evelyn L. Williams	\$666,287.22
Anonymous	\$52,264.42
<b>Anonymous</b>	<b>*\$52,344.23</b>

*\*Denotes gift to Children’s Inn*

# Board of Directors 2020-2021

## – CHILDREN'S HOME SOCIETY –



**Tim Hamel**  
Sioux Falls  
**PRESIDENT**



**Laura Johnson**  
Reva  
**VICE PRESIDENT**



**Scott Sletten**  
Sioux Falls  
**SECRETARY**



**Mick Gibbs**  
Sioux Falls  
**TREASURER**



**Sally Anderson\***  
Mesquite, TX



**Jim Berman**  
Sioux Falls



**Helen Boer**  
Lyons



**Darla Crown**  
Rapid City



**Paulette Davidson**  
Rapid City



**Gina Hopkins**  
Sioux Falls



**Lafawn Janis**  
Rapid City



**Deanna Larson**  
Brandon



**Eric Lee**  
Rapid City



**Jack Marsh**  
Sioux Falls



**John McGrath**  
Brandon



**Dustin Morrison**  
Rapid City



**John Rozell**  
Sioux Falls



**Maggie Russo**  
Aberdeen



**Tim Rustand**  
Brandon



**Karen Schreier**  
Sioux Falls



**Greg Schweiss**  
Rapid City



**Norbert Sebade**  
Rapid City



**Chirag Shukla**  
Sioux Falls



**Carolynn Stavenger**  
Sioux Falls



**Maureen Suga**  
Sioux Falls



**Marilyn Van Demark**  
Sioux Falls



**Meg Warder**  
Hill City

## – CHILDREN'S HOME FOUNDATION –



**Julie Anderson**  
Friesen  
Sioux Falls  
**PRESIDENT**



**Diana Dufur-Day**  
Hill City  
**VICE PRESIDENT**



**George Twitero**  
Rapid City  
**SECRETARY**



**Bob Baker**  
Sioux Falls  
**TREASURER**



**Greg Blomberg**  
Sioux Falls



**John Brewer**  
Rapid City



**Mike Buckingham**  
Rapid City



**Kim Burma**  
Sioux Falls



**Mary Howard**  
Sioux Falls



**Phil Lampert**  
Custer



**Lori Lewison**  
Sioux Falls



**Bill Lindquist**  
Sioux Falls



**Dave Schmidt**  
Rapid City



**Jeff Skinner**  
Sioux Falls



**Joe Sztapka**  
Sioux Falls

**Directors Emeritus:** Board members who attain Director Emeritus status have met all three of the following requirements:

- served six or more years as a CHS Board Member
- served six or more years as a CHF Board Member
- served as President of either Board

## – DIRECTORS EMERITUS –

Lynne Byrne  
Gary Brown  
Jeb Clarkson  
Steve Egger  
Phil Helland  
Blake Hoffman  
Bob Hoover  
Gary Jensen

Deanna Lien  
Helen Madsen  
Royal (Mac) McCracken  
Tim Meyer  
Linda Mickelson Graham  
Rob Mudge  
T.J. Reardon  
George Roberts

John Rozell\*  
Dave Schmidt\*  
Peg Seljeskog  
Carolynn Stavenger\*  
Pam Taylor Jansa  
Gene Uher  
Marilyn Van Demark\*  
Doug Wells

\*Current Board Member

*\*Sally Anderson is an honorary member, and the great-great-granddaughter of Children's Home Society co-founder Elizabeth Sherrard.*

## Gifts Given January 1–December 31, 2020

A listing of gifts that help support all CHS programs and services, including those provided for Children's Inn, which are noted in **bold** type.

### \$50,000

Cleaver's Chef Challenge  
Pipestone  
SB III Holdings —  
Gordon Spronk &  
Randy Spronk

### \$40,000 +

**Great Western Bank**

### \$25,000 +

**Get-N-Go**  
Great Western Bank  
MLAEA Charitable Fund\*  
POET  
Red Rock Bar & Grill  
South Dakota Elks  
Association  
**Vern Eide Motorcars Inc.**

### \$20,000 +

First PREMIER Bank  
Lynette Unzelman

### \$10,000 +

**Adams Mastrovich  
Family Foundaton**  
John & Gladys Bahnson  
Charitable Fund\*  
Richard & Rhonda Baker  
The Carter Fund  
Coffea Roasterie  
The Clarence & Anne Dillon  
Dunwalke Trust  
**Robert & Rita Elmen  
Foundation**  
Graham Companies  
Arnie Hauge  
**David & Kathy Martin**  
Nyberg's Ace  
David & Brenda O'Hara  
Tom & Michele Olsen  
Orion Land Mark  
**Sheldon Reese Foundation**  
**Charles & Lois Rose**<sup>§</sup>  
Sammons Financial Group  
Software Unlimited  
Those Guys A.B.A.T.E.  
Dr. Kirke & Dorothy Wheeler  
Charitable Fund\*

### \$5,000 +

A&B Business Solutions  
Arbeiter & Badiuk  
Avera  
**Betz Blinds Inc.**  
**Lois & Richard Bierschbach**  
**Marvin Charles**  
Citibank (South Dakota), NA<sup>§</sup>  
Component Manufacturing  
& Reaves Buildings  
CorTrust Bank  
Richard & Sharon  
Cutler Fund\*  
Dacotah Bank  
DAKOTACARE  
Daugaard for South Dakota<sup>0</sup>  
**Ryan & Alicia Fonder**  
**Jon & Kimberly Heck**  
Robert & Sandy Hoover\*

**Mike & Cindy Huether**  
JDS Industries  
Scott & Marilyn Korsten\*  
**Roger Larsen**  
**Memorial Fund\***

Lawrence & Schiller  
Love, Tito's  
Ellie Marshman  
Erv & DeMaris Nesheim  
John & Patty Nohr  
Dr. Verlyn & Lisa Nykamp  
**Our Redeemer Lutheran  
Church, Sioux Falls**  
**Pipestone**  
Ronald & Sheila Raczynski  
Steve & Tracie Rohlf  
Runge Enterprises Inc.  
**Sammons Financial Group**  
Sanford Health  
Schoeneman Lumber  
Company  
Greg & Melissa Schweiss  
**Scott & Ronna Sletten**  
Alan & Judy Spencer  
Mark & Claudia Stenson  
Tri-State Wholesale  
Flooring Inc.  
Myrl & Lois Unzelman  
Family Fund\*  
Tonniss & Sara Venhuizen  
Bob & Jo Anna Warder  
Weisser Distributing Inc.

### \$2,500 +

The 1880 Train  
Anjali Ahluwalia  
Altar'd State  
Danny & Emily Amundson  
**Dr. Kenneth &  
Margaret Aspaas, Jr.**  
Scott & Stephanie Barth  
**Harold & Helen Boer**  
**Mark & Jane Brumels**  
Burke Corporation  
CHI Health Care System  
CISA Trust Company  
(South Dakota) LLC  
CNA Surety  
Kent & Carolyn Cutler  
Family Charitable Fund\*  
**Dakota Electric Inc.**  
Raymond Daugaard  
Memorial Fund\*  
Steve & Kris Egger\*  
**Arthur & Carol Ehde**  
**Pamela Ehde Lais Memorial**  
**Donor Advised Fund**  
**Dalliss & Marion Englund**  
Dr. David & Julie Ermer  
The First National Bank  
in Sioux Falls  
Fresca Mexican Foods  
**Dan Grider &  
Jennifer Josko**  
**Allen & Joann Gundvaldson**  
**Gusso Surety Bonds Inc.**  
Tim & Somboon Hamel  
**Tim & Somboon Hamel**  
Jim & Nini Hart  
Steve & Susan Hauff

High Point Networks LLC  
**Arthur & Michele Holden**  
Hondas with Heart  
Marilyn Hoyt  
The Thomas Hurd  
Charitable Fund at  
Schwab Charitable  
Raine Jerke Christmas  
Lights Show  
Joe & Jennifer Kirby  
Charitable Fund\*  
**Kouri Insurance**  
Douglas & Elizabeth Lynch  
Maguire Iron Inc.  
Marsh & McLennan  
Agency LLC  
**Marsh & McLennan**  
**Agency LLC**  
John & Carol McGrath  
**Molly Maid/**  
**Ms. Molly Foundation**  
**Jay & Melanie Parsons**  
**Charitable Fund**<sup>§</sup>  
J.T. Profilet & Mary DeJong\*  
Louis & Joyce Profilet  
Endowment\*  
**Ransom Church,**  
**Sioux Falls**  
**Norman Rasmussen**  
**Rosenbauer Firefighting**  
**Technology**  
John & Kay Rozell  
**Sanford Health**  
**Steve & Kathy Sanford**  
**Scheels All Sports**  
**Schuneman Family**  
**Foundation**  
Servall Uniform  
Employee Fund  
**Kevin & Lorna Severy**  
**Gail Shlanta**  
**Showplace Cabinetry**  
South Dakota Trust  
Company Charitable  
Fund\*  
Sam & Betty Speier Fund\*  
**Sam & Betty Speier Fund\***  
Dr. Cameron &  
Susan Stokka  
**Joshua & Jill Storm**  
Dr. Robert & Maureen Suga\*  
Thrivent Financial for  
Lutherans  
**Thrivent Financial for**  
**Lutherans**  
Thrivent Financial  
Matching Gift  
Thrivent Financial  
Two Rivers  
Regional Office  
Tommy Jacks Pub  
**Trinity Lutheran Church,**  
**Tea**  
**Turner County Youth Hunt**  
United Parcel Service  
Dr. Bob & Marilyn  
VanDemark\*  
Vern Eide Motoplex  
Waterbury Heating &  
Cooling

### \$1,000 +

**Joseph & Susan Adams**  
Advanced Auto Parts  
Dr. Paul Amundson &  
Alison Tendler  
Robert & Karen Appelwick  
Auto Body Specialties Inc.  
Bob Baker  
Brent & Emily Bartels  
George & Ramona  
Bartels, Jr.  
Ruth Sylvia Bayne Fund\*  
**Joan Benz**  
James Berreth  
**Peter Blessi**  
David & Jill Bockorny  
**David & Jill Bockorny**  
Boen & Associates Inc.  
Harold & Helen Boer  
Robert & Lana Borem  
Sid & Barbara Bostic  
Todd & Linda Broin  
Mike & Julie Brown  
Paul & Julie Brufflat  
Kent & Peggy Brugger  
Rick & Holly Brunick\*  
**Budget Blinds of**  
**Sioux Falls**  
Meland Budwick, PA  
Tom & Linda Bunkers  
C & R Supply  
Capital Services  
**Capital Services**  
**Steve & Helene Carlson**  
Dorothy Christopherson  
CHS Fund\*  
CNA Matching Gifts Plan  
**Community Reformed**  
**Church, Sioux Falls**  
Paul & Mary Ellen Connelly  
Charitable Fund\*  
D.W. Proehl  
Construction Inc.  
**Mark & Michelle Covrig**  
Davenport Evans Lawyers  
Merlin & Barbara Davis  
**Diane Diekman**  
**Steven & Nadine Dodds**  
**Mark Dominick**  
Timothy Dougherty &  
Karen Schreier  
**Timothy Dougherty &**  
**Karen Schreier**  
**Timothy & Sara Doyle**  
Mark & Susan Duffek  
**Donald Edmundson**  
**Robin Engles**  
Paul Everson, CPA  
Excessive Autosports  
**Faith Family Church &**  
**Outreach Center,**  
**Sioux Falls**  
First Bank & Trust  
First Dakota National Bank  
First Presbyterian Church,  
Britton  
First Rate Excavate Inc.  
**First Reformed Church,**  
**Platte**  
Gary & Susan Fisher  
Rich & Suzanne Gabrielson

# PROGRAM SUPPORT GIFTS CONTINUED

Michael & Gracia Gillespie  
Great Western Bank  
Employees  
**Dan Grider, Sr.**  
**Jason & Bethany Gusso**  
**Nick & Carol Gusso**  
**Lowell Hansen Family**  
**Charitable Fund\***  
Hansen Manufacturing Corp.  
**Hansen Manufacturing Corp.**  
**Lauverne Harr**  
**Margaret Harrington**  
**Charlene & Scott Harris**  
Danelle Hauge  
The Stanley & Jean  
Hawthorne Fund of InFaith  
Community Foundation  
Tom & Jane Heinz  
The Henkel Foundation  
**Becky Henning**  
**Hillcrest Church, Sioux Falls**  
Blake & Marcia Hoffman  
Dr. Wendell & Holly Hoffman  
**Edi & Owen Holzbauer**  
Jack & Gina Hopkins  
**Hot Cocoa Hut**  
Hy-Vee Operation  
Helpful Smile  
**Hy-Vee Operation**  
**Helpful Smile**  
**Interstates Companies &**  
**the Harbor Group**  
Mary Janklow  
Steve & Pam Jansa  
Pamela Best Johnson  
David & Marilyn Kerksen  
Kylie Kiesner  
Dan & Arlene Kirby  
**Dan & Arlene Kirby**  
Zan & Mary Kirsch  
Kenneth & Mary Klatt  
**Tim & Cindi Klein**  
Geoff & Elise Knobloch  
Marten & Betty Kruger  
**Susie & Jim Lammers**

**Lands Lutheran Church,**  
**Hudson**  
Dan & Marie LaRock  
**Colleen Larson**  
**Duane & Connie Larson**  
**LaurieBelles Boutique**  
Kristi Lee  
Ralph Lindner  
**Ralph Lindner**  
Bill & Lorrae Lindquist  
Family Fund\*  
Craig & Pat Lloyd  
John & Barbara Lockwood  
Greg Lyon & Jennifer Sales  
Madden Family  
Scholarship Fund\*  
Ted Massey  
Louis Matzner  
Don & Bonnie McCleerey  
Ian & Kathy McDonald  
**Mary Meier**  
**Kathleen & Dusty**  
**Rick Miller Endowment\***  
Modern Woodmen of  
America  
**Kent & Judy Morstad**  
**Charitable Fund\***  
Leon & Shirley Mulder  
Dr. G. J. & Christine Muller  
Scott & Shannon Murfield  
Dr. Jeffrey & Mary Jo Murray  
Charitable Fund\*  
**Dr. Jeffrey & Mary Jo Murray**  
**Charitable Fund\***  
Dr. Milton Mutch, Jr.  
Mitchell Nachtigall  
Dave & Becky Nelson  
**Dave & Becky Nelson**  
Robert & Sharen Nelson  
**Elaine Niebuhr**  
**Nordstrom's Automotive**  
**Inc.**  
NorthWestern Energy  
NuStar Energy LP  
James & Sally Odenbach  
Leon & Brenda Olson  
ONE AMERICAN BANK  
Jack Paladino  
**Christopher & Deb Palen**  
Ted & Laurel Pettyjohn  
Shawn & Michelle Poe  
**Owen Postma**  
Presentation Sisters Central  
Administrative Services  
Dr. Michael & Jennifer  
Puumala Charitable Fund\*  
**Nathan & Ryan Rahm**  
Rapid City Medical Center  
LLP  
Jay & Allison Rasmussen  
**Steve & Terri Reilly**  
Reliabank Dakota  
**Reliabank Dakota**  
Timothy & Tina Reuer  
Michael & Suzanne Reuter  
Al & LeeAnn Rieman  
Dr. Craig & Michelle Rife  
Tom & Tammy Roberts  
Marilyn Ruediger  
Joel & Lois Running  
Steve & Kathy Sanford  
**Matthew Sather**  
**Kevin & Robyn Saufley**  
**Amy & Gary Schaap**  
**Vernon Schaefer**  
Obadiah Scheich  
**Drew & Nancy Schelhaas**  
Arlette Scherschligt  
Kevin & Laney Schieffer  
Terry & Brenda Schmidt

Darrell & Beth Schmith  
Al Schoeneman  
**Al Schoeneman**  
Bob, Connie, Kaitlin &  
Levi Scott  
**Benjamin & Dawn Seeley**  
James & Deborah Siemens  
Skinner Financial Services  
**Darwin & Jane Sletten**  
Scott & Ronna Sletten  
Norman & Joyce Smeenk  
Smit Family Farms LLC  
**Kenneth & Judy Snell**  
**Benjamin Solomon**  
Fran & Gail Sommerfeld  
**Jamie & Patrick Steele**  
Daniel & Bette Stevens  
**Stockwell Engineers**  
Marian Sullivan  
Sumption & Wyland  
Taft Law  
Target Circle  
Shelly TenNapel  
Thompson Law PC  
**Gene & Julie Tverberg**  
**United Commercial**  
**Travelers of America**  
Mark & Nancy  
Vanden Berge  
**Venture Crew 171**  
Veritiv  
Viking Label & Packaging  
Tim & Pam Voegele  
Wagner Family Charitable  
Trust Fund I\*  
Curtis Walkins  
Meg Warder & Justin Pickar  
Rick & Mary Weber  
**Marcy & Edwin Weiner**  
**Larry & Marlene Weires**  
Wells Fargo Foundation  
Educational Matching  
Gifts Program  
**Wells Fargo Foundation**  
**Educational Matching**  
**Gifts Program**  
**Kim & Jackie Westerling**  
Terrance & Elizabeth  
Whalen  
**Angela Wiederich**  
Theresa Wingen  
**Theresa Wingen**  
**Margaret Wiseman**  
**Kevin & Laurie Wohlleber**  
Merle & Cecile Wollman  
**Xcel Energy**  
**Xcel Energy Foundation**  
Thomas & Lynne Zimmer  
Robert & Charlene Zylstra

## \$500 +

Acucare Physical  
Therapy Ltd.  
John & Dianne Amdahl  
Mavis Amundson  
**Megan Assman**  
Assurant Solutions  
**Edwin & Janice Baatz**  
**Jamie Beisch**  
Belbas Charity Fund  
James & Ardys Berven  
**Brienne & Brian Bieber**  
**Donald & Leona**  
**Bierschbach**  
**Brian & Janet Bird**  
**Charitable Fund\***  
David Bjorklund  
Black Hills Federal  
Credit Union  
**Norman & Melanie Bliss**  
**Family Fund\***

Jerry & Susan Bohner  
Jim Bork Enterprises  
Howard & Ruth Braren  
Keith & Dorla Brink  
**Todd & Linda Broin**  
Allen & Gloria Brown  
**Carol Brown**  
Jim & Kim Burma  
**Burn Boot Camp**  
Elton & Jody Byre  
**Bill & Lynne Byrne**  
Cadwell Sanford Deibert &  
Garry LLP  
John & Rebecca Carmody  
Family CHS Endowment\*  
**Harry & Orriette Cassell**  
Cimarron Label  
Clark Family Trust  
**Clark Family Trust**  
Bill & Tam Colson  
**Culver's**  
Dakota Beverage  
Company Inc.  
Jay & Christine Dean  
Virginia Dettman  
Charitable Fund\*  
Bill & Beverly Donaldson  
Kent & Susan Edson  
Arthur & Carol Ehde  
Eide Bailly LLP  
**Emmanuel Presbyterian**  
**Women, Marion**  
Enville  
**Jeffery & Carmen Erickson**  
Andrew Erie &  
Sara Van Demark  
**Paul Everson, CPA**  
FastSigns  
**First Reformed Church,**  
**Inwood, IA**  
William Fischer  
**Mike & Okjin Formiller**  
Robert & Erin Fouberg  
Frisbee Plumbing & Heating  
**Frisbee Plumbing & Heating**  
Ralph & Mildred Galyen  
**Germantown Presbyterian**  
**Church, Chancellor**  
**Michael & Gracia Gillespie**  
Jeffrey & Holly Godber  
Gold Star Motel  
Stan Graber Financial  
Services Inc.  
Grider Properties  
**Grider Properties**  
**Grossenburg Implement Inc.**  
**Judy Hallstrom**  
**Jeffrey & Kelley Hambek**  
Charles Hanna  
Lowell Hansen Family  
Charitable Fund\*  
Chad & Korena Hatch  
**Chad & Korena Hatch**  
Eloise Hefty  
**Tim Heiman & Judi**  
**Woodward Heiman**  
**Drs. Scott Henry &**  
**Terri Peterson-Henry**  
Howard & JoAnne Hillman  
Terry & Lynette Holm  
Sandy Horst &  
Steve Isaacson  
**Sandy Horst &**  
**Steve Isaacson**  
**Daniel & Kathy Horsted**  
Tom Huebner  
**John & Anne Hughes**  
**Dr. Roger & Mary Ellen**  
**Hutchison**  
**I-90 Truck &**  
**Equipment Sales**

Interstate Office Products  
**Peter Jaros**  
Greg & Lisa Jasmer  
JMJ Caseworks  
**Matthew & Laura Johnson**  
**Pamela Best Johnson**  
**Jesse Johnston**  
Steven & Marty Kalkman  
Karl's TV & Appliance Inc.  
**Karl's TV & Appliance Inc.**  
Debra Kennedy  
Kira Kimball  
**Jeff Klein**  
Knights of Columbus  
No. 1489  
Rich & Cindy Korman  
**David & Anita Kostboth**  
Jeffrey Krell  
Mary Lampy  
Gary & Ingrid Larson  
**Nickole Larson**  
Michelle & Paul Lavallee  
David & Sharon LeBrun  
Peter & Janis Lee  
Robert & Dorothy Lees  
Edie Lien  
**Olivia Lima**  
**Diane & Donald Loomis**  
Rhonda Maciejewski  
Masterson Family Fund\*  
Mark & Kristol McKie  
Brian & Danielle Meyer  
**Midwest Amateur**  
**Pool Tournament**  
Elmer & Patricia Minks  
**Minnwest Bank**  
**Modern Woodmen**  
**of America**  
Sabrina Momand  
Maj. Mark & Jessica Morrell  
Bev Morris  
Dr. David & Jane Munson  
Dr. Patrick & Laura Munson  
Brad & Sheryl Myers  
**Larry Nelson &**  
**Dr. Patsy Uken**  
**New York Life Insurance**  
**Company**  
**Arthur & Marie Nordstrom**  
Roger & Nila Novotny  
**Patrick & Cindy O'Donnell**  
**Craig & Heather Olson**  
**Our Savior's Lutheran**  
**Church, Flandreau**  
**Jim & Kay Owen**  
Reuben & Joan Phillips\*  
**Catherine &**  
**Lawrence Piersol**  
Dorothy Poling  
**Priceless Priorities LLC**  
Pride Neon Sign Company  
Dieter Proehl  
**Lee Raines**  
**Charitable Fund\***  
David & Erin Ratchford  
Jan Reynolds  
**RKB Investments LLC**  
**Romsdal Lutheran Church,**  
**Hudson**  
Kerry Ruscitti  
Conley & Paula Ruud  
**Conley & Paula Ruud**  
Dr. Robert & Lori Santella  
Darrell & Twyla Schaap  
Family Fund\*  
**Darrell & Twyla Schaap**  
**Family Fund\***  
Scheels All Sports  
Machelle & Brad Schipper  
Dr. Greg & Karen Schultz

Shiner Bock  
 Showplace Cabinetry  
**Sioux Falls Corvette Club**  
 Sisson Printing Inc.  
 Sky Technologies Inc.  
 Charline & Deming Smith  
 Family Endowment\*  
**Steven & Sara Snuggerud**  
 Todd & Pamela Sorensen  
**Todd & Pamela Sorensen**  
**Katherine Sorenson**  
**St. John's Lutheran**  
**Church, Sioux Falls**  
 John & Linda Stengel  
 Jaysen Stevenson &  
 Sara Curry Stevenson  
 Glen & Caren Straatmeyer  
 Richard & Nancy Swain  
 Tata Consultancy Services  
 Tennyson Family  
 Foundation  
 Brian & Gloria Top  
 TransUnion LLC  
 Douglas & Linda  
 Truckenmiller  
**Douglas & Linda**  
**Truckenmiller**  
**James Trumbull**  
**United Methodist Church,**  
**Redfield**  
 Chad Van Buskirk  
**Curt & Tanya Vanoort**  
 Michael & Katherine Voeltz  
**Michael & Katherine Voeltz**  
**Rita Vogt**  
 Karen VonEye  
 George & Linda Weber  
**Thomas & Robin Weiner**  
 Robert & Kathy Weisser  
 Nelson & Vickie Wielenga  
 Sue Williams  
 Winsupply Sioux Falls  
 Plumbing & Electrical  
**Eileen Winter**  
 Workplace Marketing  
 Insurance Advisors  
 The YES Group  
**LouAnn Ziegler**  
 Zion Lutheran Church,  
 Bridgewater

**\$250 +**

38 Road House  
 A-G-E Corporation  
**Jean Ahlers**  
 Ailerons & Elevator  
**Allstate Insurance Agency**  
 AmazonSmile Foundation  
 Marty Amble  
 AmFam Agents  
 Elon Avtjoglou  
**Bank of America**  
**Matching Gifts**  
**Darrel Bartell**  
 Tom & Rebecca Batcheller  
 Christina Bauer  
**Ronald & Leetta Bennett**  
 Peter & Rona Bergmann  
 Donald & Leona  
 Bierschbach  
**Bigs Sports Bar & Casino**  
 Gary & Michelle Black  
**Helen Oppold Blair**  
**Memorial Fund\***  
 Maggie Bloom  
 Walt & Jan Bones, III  
**Bradley & Tamara Bosch**  
 Allan & Sharon Brink  
**Allan & Sharon Brink**  
 Bill & Lynne Byrne  
 Craig & Teresa Carlson

**Michael & Lesley Carolan**  
**Carpenter UMW**  
**Alan Carter**  
**Anne & Tracy Comp**  
 Nancy & Kosta Constantine  
**Carmell Cook**  
 Jerry & Sandy Crisp  
 Lisa Crist  
 James & Judy Cronin  
**Cynthia Cummins**  
**Daniel Dardis**  
**Memorial Fund\***  
 James & Deanna Daum  
**Kathy Davis**  
 Doug & Shirley Donnelly  
**Doug & Shirley Donnelly**  
**Brock & Jennifer**  
**Doubledee**  
 Marlys Drewes  
 Miriam Dunmire  
**Andy & Pat Dziadek**  
 Kurt & Michelle Eeg  
 Marvin & Jackie Eich  
 Sidney & Mayona Elcock  
 Family Endowment\*  
 Linda Elliott  
 Emmanuel Baptist Church,  
 Sioux Falls  
**Enterprise Rent-A-Car**  
 John & Bettie Erickson  
**Faith Lutheran Church,**  
**Humboldt**  
 John & Cheryl Faundeen  
**Myra & Larry Feay**  
**Fit Body Boot Camp**  
**Sheila Gartke**  
 Craig & Michelle Gaspar  
 Mick & Michelle Gibbs  
 Dennis & Jane Gilk  
**Bob & Cherie Goehring**  
**Graber & Associates**  
**Graco Inc.**  
**Grandview Reformed**  
**Church Women of Hope,**  
**Armour**  
 Rosa Lea Grav  
 Cheryl Guerrero  
**H&H Mobile Home**  
**Service Inc.**  
 Dr. Courtland & Julianna Hall  
**Eric & Tammy Hanson**  
**Jackie Hanthorn**  
 Drs. Scott Henry &  
 Terri Peterson-Henry  
 Mike Hibma  
**Edith Hoogendoorn**  
**Andree Howenstein**  
 Terry Jacobson  
**Julie Janasiewicz**  
**Darin Johnson &**  
**Ann Gesick Johnson**  
**Derek Johnson**  
**Mark & Karen Johnson**  
**Elmer & Karen Karl**  
**Thomas & Ruth Kattke**  
**Leo King**  
 Henry & Christine Knapp  
**Komstad Covenant Sunday**  
**School, Beresford**  
 Tom & Cathy Kosobayashi  
 Susan Kulesa  
 Benson Lang'at  
**Darlas & Donna Lehmann**  
**Janet Lenz**  
**Annette & Thaddeus**  
**Lerew Zimanski**  
**Darlene & Wendell Liaboe**  
**Family Endowment\***  
**Ramona Lindgren**  
 Troy & Brittany Link

**Nick & Darcy Litzen**  
**Mindy Loewen**  
**Jon & Patsy Madland**  
**Don & Bonnie McCleerey**  
 Bruce & Cathy McCollister  
 Mary McGee  
 Morgan Mendelson  
 Dennis & Tammy Mettler  
 Larry & Dorothy Meyer  
**Larry & Dorothy Meyer**  
 Norbert Miles  
**Dominic & Debra Miller**  
 Ed & Karen Miller  
**Sharon Moon**  
 Elaine Moore  
**Steve & Yvonne Mossberg**  
 Karen Muth  
 David & Pat Nadolski  
 Jeff & Muriel Nelson  
 Keith & Wendy Neuharth  
 Dave & Karen Nicholson  
**Thomas & Jean Nicholson**  
 Arthur & Marie Nordstrom  
 Nordstrom's Automotive  
 Inc.  
**Thomas & Marilyn Novotny**  
**Oien Family Chiropractic**  
 Tom & Carolyn O'Meara  
 Roger & Bonnie Olson  
**Orion Land Mark**  
**Employees**  
**Palisade Lutheran Church,**  
**Garretson**  
 Jeff & Carol Parker  
 Shaileshkumar &  
 Minaxi Patel  
 Keith & Jessica Perkins, III  
 Jim & Melissa Peterson  
**Vilo & Marlys Pietz**  
**Arnie Plathe**  
 Ross & Lynn Plucker  
**POET Design &**  
**Construction**  
**Janis & Dennis Porto**  
 Prairie Chicken  
 Motorcycle Club  
 Joy Prehn  
 Pat & Randy Rasmussen  
 Dr. Richard & Suzanne  
 Rauschenbach  
**Dr. Richard & Suzanne**  
**Rauschenbach**  
 Drs. Louis & Julie Raymond  
**Linda Rensberger**  
**Duane & Diane Sather**  
**Tom Scheiber**  
 Gary & Connie Schickedanz  
**Jean Schmidt**  
 Larry & Dianne Schmidt  
 Nolan & Brooke Schmidt  
**Michele & Brian Schuldt**  
**Jasmin Seppanen**  
 Glen & Mary Severson  
 Cathy Sieverson  
 Sioux Empire Automotive  
**Sioux Empire Federal**  
**Credit Union Employees**  
**Siouxland Chapter of the**  
**American Payroll**  
**Association**  
 Leo Skancke  
 Galen & Terri Skarphol  
**David Sorenson**  
 South Dakota State Council  
 Knights of Columbus  
**Shirley Stach**  
 Peter & Lauren Stavenger  
**Jeffrey & Renece Strand**  
**Rhoda Strasser**  
**Sunnycrest United**

**Methodist Church Time**  
**Out Group, Sioux Falls**  
**Surgical Institute of**  
**South Dakota**  
**Joel Sylvester**  
**Krista & Kellen Taylor**  
**Terra Shepherd Boutique**  
**Lois Thomas**  
 Warren & Shirley Thompson  
 Endowment\*  
**Warren & Shirley**  
**Thompson Endowment\***  
**Henrietta Timmer**  
**Transfiguration Greek**  
**Orthodox Church**  
**Philoptochos, Sioux Falls**  
**Travel Partners**  
**Jerry & Bab Travis**  
**Heidi Underwood**  
 Richard & Michelle  
 Van Demark\*  
**Austin VanHove**  
 Viktor Teleconstruction  
 Dr. Bruce & Judy Vogt  
**Dr. Bruce & Judy Vogt**  
 Tim & Brenda Welbig  
 Jeremy Wilson  
**Terry & Michelle Wolf**  
 Woods, Fuller, Shultz &  
 Smith PC  
**David & Marge Wrotenbery**  
 Carl Youngdahl  
 LouAnn Ziegler

**\$100 +**

1st Financial Bank USA  
 Credit Card Center  
 Dennis & Lizette Aanenson  
 Kathy Addy-Hofer &  
 Phillip Hofer  
 Joe & Joan Ahlers  
**Frances Alberty**  
**Allers Family**  
 Diane Almer  
 American Legion Auxiliary,  
 Hurley  
 Carol & Perry Amussen  
**Carol & Perry Amussen**  
 Marjorie Anderson  
**Marjorie Anderson**  
**Tom & Carol Anderson**  
**Architecture Incorporated**  
 Dan & Leslie Ashmore  
**Chelsea & Eric Asmus**  
**Kyle & Wendy Aspaas**  
**Darla Assman**  
**Eugene & Kathy Ausland**  
**Donald & Arla Baker**  
 Richard & Linda Bakken  
**Bev Ballenger**  
**Irene Bamsey**  
 Kelly Barnett  
 Diane Bauer  
**Linda Bauer**  
**William & Shirley Bauer**  
**Brian & Judy Bauman**  
 Lori Baye  
 Gene & Kimberly Beaner  
 Brian & Jilliean Beck  
**Brian & Jilliean Beck**  
 James Becker  
 Jerald & Cheryl Beckler  
**Linda & Ronald Beckman**  
 Cathryn Beisel  
**Eilene Benz**  
 Dzenan & Kelsey  
 Berberovic  
**Johanna Berghuis**  
 Casey & Angela Besler  
 Bide-A-Wee Club  
 Lead-Deadwood

Larry & Anita Bierman  
 Family Endowment\*  
**Judy Bittner**  
**Dr. Jerome & Susan Blake**  
 Jorjann Blake  
 Joel & Dar Blanchard  
 Dale & Judy Blauwet  
 Lowell & Julie Boe  
**Jim & Mary Bones**  
 Boyd Law Firm, Prof. LLC  
**Martin Boyesen &**  
**Wendy Butler Boyesen**  
**Dr. Verdayne & Mary**  
**Brandenburg**  
**Brandon Valley Baptist**  
**Church**  
**Gary Brendel**  
**Brad Brown**  
**Maxine Brown**  
 Bruce Brugman  
 Jason Burgers  
**Bill Bunkers**  
 Judith Burk  
**Robert Cady**  
**Calvary Lutheran Women,**  
**Irene**  
**Calvin Christian Reformed**  
**Church, Rock Valley, IA**  
 Francis & Mary Lou  
 Campbell  
**Brenda Canfield**  
**Canton Lutheran WELCA**  
**Amy & Calvin Carter**  
 Robert Caselli  
 Dr. Joe & Amy Cass  
**Catholic Daughters of**  
**the Americas Court**  
**Sancta Maria No. 368**  
 Angela Caudill  
 Centerville Rotary Club  
**Christ Lutheran Church,**  
**Salem**  
 Mary Christopher  
 Tom & Rogene Cihak  
 Dr. Paul & Shirley Cink  
**Cipher Imaging**  
**Phyllis Clark**  
 Dr. Dennis & Joan Clarke  
 Doretta Colon  
**Confluence**  
**Larry & Karen Corkins**  
**Cornerstone Financial**  
**Solutions Inc.**  
 Amy Costa  
**Michael & Ann Costanzo**  
 Tom & Karen Cota  
**Betty Crawford &**  
**Roger Raether**  
 Andrew & Amanda Curley  
**Kara Cushman**  
**Dakota Alliance**  
**Soccer Club**  
**Stephen Dannen**  
**Dennis & Linda Daugaard**  
**Vernice & Dennis**  
**Daugherty**  
**Davis Family**  
 James Dawson  
**Jay & Christine Dean**  
 Vincent & Patricia DeBates  
 Delaware Women's  
 Ministries, Lennox  
 Desert Skyline Estates  
 Home Owners  
 Association Board  
**Donna Dickson**  
 Amy Does  
**Joseph & Jolene Donelan**  
 Donald & Mary Dorsman  
 Claudia Douglas

**PROGRAM SUPPORT GIFTS**  
CONTINUED

**Michael Draayer**  
Jeffrey & Jolene Dyce  
Timothy Dykstal &  
Caroline Burke  
John Dyvig  
Thomas & Connie Earley  
J. Scott & Julie Early  
**East Nidaros Lutheran  
Church, Baltic**  
Larry Easter  
**R. Eastman**  
LuAnn Edwards  
**Nancy & Thomas Eichacker**  
Dave & Jan Eiesland  
**Empire Riders**  
**Endeavor Elementary  
Students**  
Hazel Engle  
**Dave Englert**  
David Enke  
David Erickson  
**Eugene & Betty Erickson**  
**Fall Festival Folks**  
Family Dental Center  
**Farm Credit Services  
of America**  
**Burdette Faust**  
Matt & Kari Feldhaus  
Monte & Karen Feldkamp  
John & Julie Fenedick  
Mary Jane Fenn  
**Cheryl Ferrie**  
**Cynthia & Walter Fischer**  
First Presbyterian Church,  
Sioux Falls  
**Leif & Kathleen Fjellestad**  
Steve & Mary Helen Flanery  
James & Jodi Fleming  
Joel & Beth Flier  
**Roberta Foltz**  
Guy Ford  
Brigitte Fowlds  
Bill & Jean Fuller  
**Gage Brothers Concrete**  
**Gary & Cynthia Gaspar**  
Michael & Carla Gibson  
Paul Gilk  
**Paul & Katie Gilmore**  
Karen Girard  
**Mark & Margaret Glanzer**  
**Lori Gooch**  
**Melissa Goodwin**  
Grace Lutheran Church,  
Luverne, MN  
**Kim Graff**  
Dave & Jan Grage  
Mark & Pat Graham  
Gene Grohmann  
**John & Jane Groos**  
**Randy & Vicki Grooters**  
**Brandi & Lance Haase**  
**Roland Hagen**  
**Michael & Lori Hahn**  
John Hammer  
Kenneth Hanks  
Chris Hansen\*  
David & Diane Hansen  
Bruce & Julie Hanson  
Erik Hanson  
Mary Hanson  
**Rebecca Hanson**  
Alan & Linda Hartman  
Alfred & Linda Hartmann  
**Robert & Linda Hartmann**  
**James & Patti Hartung**  
**Loren & Dorothy Hass**  
Mark & Sharon Hasvold  
**Gladys Hawke**  
Mike Hawkins  
Robin Heeren

**Lauralee Hegg**  
Barb Heien  
**Brian & Jennifer Heiman**  
**Heiman Fire Equipment**  
Richard Heinrich  
John & Molly Heisler  
**Dr. William & Becky Held**  
Thomas & JoAnn Helland  
**Ronald & Deborah Helsa**  
**Ron & Vicki Helwig**  
**Lori Hengeveld**  
**Josh Herbers**  
Chuck & Marjory Hey  
**Hilltop United Methodist  
Church Women,  
Sioux Falls**  
Scott & Nancy Hodges  
Family of Evelyn Hofer  
**Scott & Rebecca Hofer**  
**Willy & Arlene Hoff**  
Marlys Hohman  
**Marlys Hohman**  
Lyle & Lorna Hollander  
**Jean Holle**  
**Quintin & Mary Honerman**  
**Dorothy Hooks**  
**Hope Lutheran Church**  
**WELCA, Sioux Falls**  
Beverly Horsted  
Michael & Bunny Howes  
**Hudson Lutheran Church**  
**WELCA**  
Linda Hughes  
**Marilyn & Leland Hult**  
**Rick & Tammy Huntimer**  
**Kenneth & Laurice**  
**Iseminger**  
**ISG Inc.**  
**Ehab Jaber**  
Clara Jacob  
Jacquie's Fund\*  
**Jacquie's Fund\***  
Erin Jansa  
Dennis & Janelle Jarabek  
Charitable Fund\*  
Judy Jasper  
Chad & Sarah Javers  
Linda Javers-Richter  
**Douglas & Dawn Jensen**  
Jeptha Lodge #121 AF & AM,  
Hudson  
Jesse & Jo Inc.  
**JLG Architects**  
Jerry & Wanda Johnsen  
**Jerry & Wanda Johnsen**  
**David & Shannon Johnson**  
**Dennis & Elaine Johnson**  
Eileen Johnson  
**Katherine Johnson**  
**Mary Johnson**  
Tim & Patricia Johnson  
Tyler & Angela Johnson  
**Bobbie Jones**  
**Lois Jones**  
**Mark Jones**  
Susan Jost  
**JSA Consulting Engineers/  
Land Surveyors Inc.**  
**Claudia Kapp**  
Kelsey Kasten  
**Nancy Kattke**  
**Ellen Kelsch**  
Kenneth & Jacqueline  
Kessler  
**KeyMedia Solutions**  
**Kira Kimball**  
**Brady King**  
**Thomas & Catherine King**  
Jamie Kingma  
**Timothy & Jane Kinsella**

**Keith & Joann Kinsey**  
**John & Marcia Kittelson**  
**Beverly & Delmar Klassen**  
Dennis Knutson  
Steven & Donna Kocer  
**Jan Koch**  
Scott & Pamela Koelewyn  
**Scott & Pamela Koelewyn**  
Gilmore & Dorothy Koepsell  
**Gilmore & Dorothy Koepsell**  
**Pat & Mark Koll**  
**Barry Konken**  
**Doris Kono**  
**Cathy Kramer**  
Les & Gloria Kruse  
Rick Kuestermeyer  
**Tim Kurbis**  
Ladies Auxiliary FOE,  
Rapid City  
Jerome & Nancy Lammers  
**Lands Lutheran Ladies,  
Hudson**  
**Janet Larsen**  
Larry & Shirley Larson  
**Sandi Larson**  
Emery & Carol Lee  
Thomas & Dorothy Lemonds  
**Jill & Peter Lerdal**  
Mary & Patrick Lerdal  
Paul & Karen Leslie  
Larry & Carol Lewis  
Philip & Barb Lewison  
Peter & Molly Liberko  
**Margaret Lien**  
**Gerry & Val Liesinger**  
Lighting a New Way  
Counseling Services  
David & Denise Link  
Liz Lloyd  
Russ & Cheryl Loar  
**Janet Lohman**  
**Brian & Tari London**  
**Calvin & Sheryl Lottman**  
**Dr. Larry & Lois Lounsbery**  
Mabel Ludens  
**Traci Lund**  
**Audrey Lundquist**  
Diane Lundquist  
Steve & Roxanne Lynch  
**Steve & Roxanne Lynch**  
David Maddox  
Linda Maines  
**Essam Makram**  
**Bev Mann**  
Louis & Pauline Manus, Jr.  
Don & Janette Marker  
Kent & Marcia Martin  
Rob & Mary Mastick  
**Rob & Mary Mastick**  
**Annette Matzner**  
Debbie Maxon  
Bonnie McGinnis  
**John & Carol McGrath**  
**Donna McKettrick**  
**Brenda Merges**  
**Dean & Debbie Mertz**  
Messiah Lutheran Church  
WELCA, Flandreau  
**Robert & Ruth Metcalf**  
Ann Metli  
Mike Metli  
Colleen Meyer  
Dr. Robert Meyer &  
Joan Giebink  
**Dr. Robert Meyer &  
Joan Giebink**  
Roxann Meyer  
Linda & Daniel Mickalowski  
Allison Mickelson  
Midco Foundation

“Please accept  
this gift to be used  
anywhere needed.

Our love to you all  
that serve these  
children and their  
families. You are  
the hands of God  
on this earth.”

DAN & TRICIA  
STEEN

Carla Midden  
Jerome & Anna Miles  
**Sandy Millar**  
Marcia Miller  
**Wendell Miller**  
Janice Mitchell  
Modern Woodmen of  
America Camp 1766  
**Becky Moen**  
**Helen Mohr**  
Robert Morris  
Mary Ann Moylan  
Todd & Shonna Mueller  
**Jerry & Anna Mundt**  
**Jane Murray**  
**Murray Properties**  
**Greg & Cindi Mutchelknaus**  
Betty Mydland  
**Nathanael Women of the  
ELCA, Alcester**  
**Duane & Lois Nearman**  
Rick & Pat Nearman  
**Christopher & Robbin  
Nelson**  
**Dr. Gayle & Angie Nelson**  
**Helen Nelson**  
**Merri & Henry Nelson**  
Dr. Pat & Sandy Nelson  
Vince & Jeralyn Nelson  
Mark Neuharth  
New Beginnings Faith  
Church, Sioux Falls  
**Tung Nguyen**  
**Dwight Nicholson**  
Mark & Shannon Niemeyer  
Larry & Janet Noah  
**Larry & Janet Noah**  
**Frances Noteboom**  
Bob & Cathy Novak  
Dr. James & Carol Oakland  
**Duane O'Connell**  
**Doris O'Dea**  
**Doug Odgaard**  
**Harvey & Karen Odens**  
**Olin & Marilyn Odland**  
O'Hara Family  
David Ohme  
**Glenn Olsen**  
Helen Olson  
Jon & Gloria Olson  
**Bonnie Omdahl**



**Ophthalmology Ltd.**  
**Dr. Mark & Matilda Oppenheimer**  
**Marley Opsahl**  
 Leah Orsack  
 Orthopedic Institute  
**Anita Otten**  
**Sarah Ouellette**  
 Our Savior's Lutheran  
 Women of the WELCA,  
 Flandreau  
 Aaron Paquette  
 John & Jane Paulson  
**Tabitha Pemberton**  
**Carolyn Pesicka**  
**Dale & Kathy Peterson**  
**Daniel & Karen Peterson**  
 Pie in the Sky Studios  
**Anthony Pizer & Jessica Aguilar**  
 Pizza Ranch of  
 East Sioux Falls  
 Rodney & Ingrid Place  
**Pleasant Valley Lutheran Church WELCA, Vermillion**  
 David Pollard  
**Julie Popham**  
 Rip & Marlys Porter  
**Karen Pratt**  
 Marsha Pressler  
 Carmen & Jane Priesz  
 Protech Products Inc.  
 Prudential Financial Inc.  
**Timothy & Lynnette Qualm**  
 Patrick & Marcia Quinn  
 Janice Radach  
**Judith Radermacher**  
**Troy Rames**  
 Lester & Mary Ramstad  
**Lester & Mary Ramstad**  
**Marge Rand**  
 Robert & Jody Rasmussen  
 Janet Rathbun  
 Richard & Connie Rathert  
**Marian & Royce Redlin-Reit**  
 Fred & Carol Rehder  
**Larry & Barbara Rehfeld**  
**Cheryl & Howard Rehfeldt**  
 Brian & Laura Reimer  
**Deanna Reindel**  
**James & Diane Reiners**  
**Patty Reistroffer**  
**Reynolds Construction Management**  
**Jan Reynolds**  
**Merlynn Rezek**  
**Lavonne Riechers**  
 Emily Ries  
**Karl Ries**  
 C. Emmet & Mary  
 Gayle Rogers  
 Elaine Romero-Douglas  
**Romsdal Womens Group, Beresford**  
 Lois Rossum  
 Royal Neighbors of America,  
 Sioux Falls  
**Royal Neighbors of America, Sioux Falls**  
**RSA**  
**Darrel & Shirley Rupp**  
 Robyn Russell & Jim Lloyd  
**David & Janis Ruud**  
**Doris & Kermit Rye**  
**Richard & Joan Saathoff**  
 Linda Saloum  
**Dr. Paul & Trisha Sampson**  
**Bill & Dee Samuelson**  
**Ronda & Craig Samuelson**

Laurel Sandhurst  
**Sanford Center for Digestive Health**  
**Sanford Children's Specialty Clinic**  
**Clifton & Jeanette Saugstad**  
**Dianne Schemper**  
**Mark Schlueter**  
 Dennis & Roxie Schmitz  
 Jon & Stephanie Schneider  
 Craig & Nancy Schoen  
**Joyce & Steve Scholten**  
**Linda Schulte**  
**Kenneth & Colleen Schuster**  
**Merlin & Laurie Schwartz**  
**Garry & Gloria Scott**  
**SDSU College of Pharmacy**  
 Bryan Seaborn  
**Pamela Sheppard**  
**Jeff & Kellie Shultz**  
 Sioux Falls Community  
 Blood Bank  
**Siouxland Chapter AACN**  
**Shirley Skonhovd**  
 Ken & Vicki Smith  
 Lynn Smith  
**Anita Solberg**  
**Robert Solomon**  
 Thomas & Linda Sorenson  
**St. Boniface Altar Society, Freeman**  
 Glenn & Mary Jane Stalheim  
**Kathleen Stanga**  
 Cathy Stark  
 David Staum &  
 Jeanne Abbott Staum  
 Jim & A.J. Stavig  
 Betty Steen  
 Daniel & Patricia Steen  
**Ron & Beth Steenholdt**  
 Steve & Lisa Steinhouse  
 Patrice Steinman  
 Jon & Jean Stenberg  
**Charles Stepp**  
**Wayne & Palma Stombaugh**  
 Alvin & Marcine Straatmeyer  
**Duane & Linnea Strande**  
 George & Valois Strandell  
 Rhoda Strasser  
**Betty Strom**  
 Michael & Judy Strom  
**Allen & Pat Svennes**  
 Dick & Kathy Sweetman  
**Patty & Everett Swensen**  
**Col. Mary Swenson, Ret.**  
 Donna Belle Talty  
**Carolyn Tam**  
**Erica Tao**  
**Rita & Harlan Temple**  
**Terry Redlin Elementary School**  
**Sandra Terveen**  
 Ronald & Linda Thaden  
 Ken Thaler  
 C. Ann Thompson  
 Gregg & Laurie Thompson  
 June Thompson  
**Don Threadgold**  
 Michael & Sarah Thury  
 Dale Tjarks &  
 Carol Entringer-Tjarks  
 Jerry & Bab Travis  
 Jean Trusty  
**TSP Inc.**  
 Jeff & Sherry Underberg  
 El & Joan Unruh  
 Megan Valder  
**Matthew & Michele Van Buren**

Janice Van Vuren  
 Lisa VanDenBerg  
 Alice Vanfosson  
**Alice Vanfosson**  
 Brad & Amy VanMaanen  
**Van't Hul Farms**  
**Shirley Vehle**  
 Derek & Molly Vetsch  
**Debra Vigness**  
**Amanda Vlaminck**  
**Janet Von Auer**  
**Forestt & Laurie Wagner**  
 Brad & Karen Wallenberg  
**Janice Walline**  
**Merle & Nancy Walter**  
**Jerry & Patricia Walton Endowment Fund\***  
**Richard & Merry Watters**  
**Rick & Mary Weber**  
 Roger & Michele Weber  
**Lewis & Renee Weinberg**  
 Larry & Marlene Weires  
**Weller Brothers**  
**Wells Fargo Matching Gifts Program**  
 Dr. Randal & Suzanne Welter  
 Ronald & Peggy Wencil  
 Jeff & Linda Weppeler  
 Pat Wheaton

James Whetham  
 Dorothy Ann Whisler  
**Cliff White**  
**John & Deanna Wiarda**  
 Brian & Amy Wienk  
 Marsha Wienk  
**Wild Flower Presbyterian Church, Sioux Falls**  
 Brian Wilson  
**Carmella Wilson**  
 Janice Wilson  
**Richard & Sharon Wilson**  
**Audrey Wintersteen**  
 Wireless World  
 Nita Wirth  
**Chuck & Norma Wise**  
 Witful LLC  
 Richard & Jeanne Wold  
 Bart & Barb Workman  
**Worthing Insurance Inc.**  
**Patricia Wuebben**  
 Mike Yaeger  
**Mike Yaeger**  
**D.A. & Susan Young**  
 Eric & Lori Yunag  
**Arlene Zimmer**  
 Joe & Betty Zimprich  
**Annette Zwemke**

## – KEY –

**BOLD TYPE** denotes gifts designated to Children's Inn

\* Gifts given through the Sioux Falls Area Community Foundation

o Gifts given through the Black Hills Area Community Foundation

§ Gifts given through the South Dakota Community Foundation

† Deceased

“Each year I am humbled by the thoughtfulness and generosity of our donors—but never more than in 2020.

When the pandemic hit, the economy declined and unemployment rose, our friends remained steadfast. When we could not give campus tours or welcome volunteers, our friends remembered us. And when we were unsure what the holidays would bring, our friends ensured that the children and families we serve had a wonderful Christmas.

Thank you so very much. Please know that we deeply appreciate your support.”



**RICK WEBER**

DEVELOPMENT DIRECTOR,  
 CHILDREN'S HOME FOUNDATION

## Endowment Gifts Given January 1–December 31, 2020

Gifts and pledges listed include those given in support of Children's Home Foundation's Legacy of Love & Hope Endowment Campaign. Children's Inn gifts and pledges are noted in **bold** type.

### \$250,000 + Arnie Hauge

### \$95,000 +

Rotary Club of  
Rapid City Rushmore:  
• Golf Tournament  
• Gala at Mount Rushmore

### \$77,000 +

Jon Crane Children's Home  
Society Benefit Auction

### \$50,000 +

Arnie Hauge  
Tom & Kathy Walsh

### \$35,000 +

Kieffer Sanitation Trash Can  
Open Golf Tournament

### \$25,000 +

Clifford & LaVonne Graese  
Foundation  
Bill & Carolyn Hinks  
Jack & Vianne Kucera

### \$20,000 +

Scott & Ronna Sletten

### \$10,000 +

F.L. Clarkson Family  
Foundation  
James Dodson  
James† & Eloise Elmen  
Foundation  
Great Western Bank  
Janet Kahler  
Linda Mickelson Graham  
Pipestone  
**John & Kay Rozell**  
Salt of the Earth Foundation  
Ed & Peg Seljeskog  
Glenda Stene  
Duane & Ann Stich  
**Sun Enterprises Inc.**  
**Gordon & Tami Wallenstein**  
**Brig. General Myrna**  
**Williamson, Ret.**

### \$5,000 +

Black Hills Energy  
June Clark Endowment  
Fund  
Hills Septic Service  
**Terry Jacobson**  
Myles & Jeanette Kennedy  
Robert & Deborah Mudge  
Don & Ann Platt\*  
Douglas & Jane Rogers  
John & Kay Rozell  
**Sercl Family Fund\***  
Michael & Mary Trykoski  
Bob & Jo Anna Warder

### \$2,500 +

Dr. Kenneth & Margaret  
Aspaas, Jr.

Assurant Solutions  
Black Hills Animal  
Hospital PA  
Black Hills Rubble  
Management  
Black Hills Shooters  
Supply Inc.  
Brazos Roofing International  
Stuart Fromm, MD  
Good Samaritan Society &  
Sanford Health  
Granite Automotive  
Allen & Joann Gundvaldson  
Dean Kurtz Construction  
Company  
Ross & Angie McKie  
Erv & DeMaris Nesheim  
Gail Shlanta  
The UPS Store  
DeAun West  
Jack Yonkovich

### \$1,000 +

Duane & Mary Albers  
Russ & Jamee Allgier  
Mavis Amundson  
Dan & Leslie Ashmore  
Bach Investments Inc.  
Black Hills Community Bank  
Black Hills Sugar Shack  
Black Hills Surgical  
Hospital LLP  
John & Jan Brewer  
Tom & Linda Bunkers  
Roy Burr & Arlene Ham-Burr  
Cambria Suites  
Canyon Lake Liquors Ltd.  
Jay & Angela Crossland  
Justin Cutler  
DAKOTACARE/Carver  
Insurance Inc.  
Dakotah Steakhouse  
Michael Day &  
Diana Dufur-Day  
Glen & Carla Eng  
Farmers Insurance &  
Financial Services,  
Dave Schmidt  
Insurance Agency Inc.  
First Western Federal  
Savings Bank  
Curt Friesen &  
Julie Anderson Friesen  
GenPro Energy Solutions LLC  
James & Connie Green  
Gustafson Builders  
Vern Hagedorn  
Gary & Carmen Hansen  
Gary Hermanson  
Highmark Federal  
Credit Union  
Vivian Jacobs  
James & Judith Johnson  
Ketel Thorstenson LLP  
Scott & Marilyn Korsten  
Charitable Fund\*  
David & Cindy Ledford  
**Lincoln County Child Fund**  
Lind-Exco Inc.  
John & Carol McGrath

McPherson Auction &  
Realty Company  
Monument Health  
Kent & Cathy Mondon  
Northwest Pipe Fittings Inc.  
**Thomas & Marilyn Novotny**  
Pacific Steel & Recycling  
Marjorie Pearman  
Norm & Linda Peterson  
**Don & Ann Platt**  
Point Wealth Advisors  
Rapid Foundation Repair  
Sander Sanitation  
Services Inc.  
Scull Construction  
Services Inc.  
Fred & Sherry Thurston, II  
Clayton & Cheryl Trulson  
U.S. Bank  
Vast Broadband, Rapid City  
Waste Equipment-Toter  
John & Dorina Weigelt  
Bill & Judy Wittrig  
Thomas & Lynne Zimmer

### \$500 +

Dennis & Lizette Aanenson  
Dr. Robert & Judy Allen  
Gerald & Karen Baldwin  
Big D  
Black Hills Federal  
Credit Union  
Butler Machinery  
Clarity Telecom LLC  
Jeb & Maureen Clarkson  
Clemmons Asphalt  
Maintenance  
Bill & Tam Colson  
Compliance Vitals LLC  
Consolidated Construction  
Company Inc.  
Nancy & Kosta Constantine  
Nicholas & Chelsea Conway  
Jon & Gail Crane  
David & Kimberly Dolan  
Miriam Dunmire  
Angela Gerlach  
Gunderson, Palmer,  
Nelson & Ashmore LLP  
Anya Hartpence  
Highmark Erectors Inc.  
H-S Precision  
Independent Optical  
Iron Outfitters  
Karl & Jill Jegeris  
Christopher Karn  
Kiewit Corporation  
Knecht Home Center  
McManigal Real Estate  
Jeffrey & Susan Meyer  
MG Oil Company  
Dr. Isaac & Holly Morgan  
Mountain Plains Insurance  
Jeff & Muriel Nelson  
Ronald Neri &  
Georgia Austin Neri  
Neugebauer's Jewelry  
Design & Service  
Ray Osloond & Deb Rawlins  
William & Patricia Printz

Rapid City Police  
Department<sup>o</sup>  
Brian & Brittany Richman  
Security First Bank  
Shell Food Marts  
Jeannette Stowsand  
Jeffrey & Azure Summers  
**Tri State Wholesale**  
**Flooring Inc. Employees**  
Fred & Maryann Tully  
Unify Home Lending Inc.  
Valley Sweeping  
Dr. Scott & Helen Van Dam  
Waste Equipment  
Rick & Mary Weber  
William & Sherry Wood

### \$250 +

Arbeiter & Badiuk  
Mark & Claudia Barry  
Dirk & April Boomsma  
Mike & Robin Buckingham  
Casey's Corner Inc./  
Casey's Auto Rental  
Dakota Regional  
Periodontics  
James & Jane Doyle  
Fisher Beverage Inc.  
Byron & Vicki Foreman  
Jeff & Karla Fullerton  
John & Anne Hughes  
Kieffer Family Dental PC  
KLJ Engineering LLC  
Maintenance Services  
Lonnie & Kris McKittrick  
Lowell & Mary Ann Myers  
Pioneer Bank & Trust  
Rapid City Journal  
Daryl & Ginny Reinicke  
Chris Robbins  
Linda Rowley  
Theresa Schreiner  
Signal Securities Inc.  
Paul & Mary Thorstenson  
Troy Ward

### \$100 +

The 1880 Train  
Lyde & Jeff Adams  
Jordan & Sarah Anderson  
Charles & Jill Arbeiter  
Jeff & Cindy Bailie  
Gary & Gloria Brown  
Bruce Brugman  
Courtney & Deanna  
Clayborne  
Jean Cline  
Doug & Darla Crown  
James & Amy Donohue  
Kerry Engelmann  
Doyle Estes &  
Kathy Johnson  
Dana & Kristi Foreman  
Steve & Wanda Helmers  
Kelly & Kelli Howie  
James Huff  
Ron & Kathy Jeffries  
Kerri & Sabrina Johnston  
Jim & Holly Jones  
Scott Kopplin



# CHS CHRISTMAS BOOKS



Event Date:  
CHRISTMAS SEASON 2020

NET PROCEEDS: **\$112,989**

DESIGNATION:  
CHS Program Support

### BOOK SPONSORS:

Software Unlimited  
Coffea Roasterie  
Pipestone  
Sammons Financial  
POET  
Erv & DeMaris Nesheim  
*(In memory of Jodie, Andrea and Dan)*  
Scott & Marilyn Korsten  
NuStar Energy  
Geoff & Elise Knobloch  
Rick & Mary Weber  
Jack & Linda Stengel  
David & Sharon LeBrun  
Winsupply Sioux Falls  
Plumbing & Electrical

Pete Laber  
Wayne & Kay Lang  
Marv & Lori Larabee  
Connie Larson  
Michelle & Paul Lavallee  
Joe Leichtnam  
Doug & Penny Lind  
Jim McCann & Sue Timmons-McCann  
Erica Meyer  
Moyle Petroleum Company  
Bruce & Kim Nearhood  
John & Marci O'Connell  
Michael & Georgia O'Connor  
Christine Peterson  
Konstantin & Jenna Posherstnik  
Prairie Auto Parts Inc.  
Print Mark-et  
Daniel & Janice Quinn  
Robert & Judy Quinn  
Dennis & Linda Rabe  
**Steve & Terri Reilly**  
Robert & Audra Saylor  
Dr. Jeff & Laurie Schleusener  
William & Cheryl Schreiber  
Mark Schreiner  
Larry & Mary Stevens  
**Betty Strom**  
Doug Theel  
Tyler & Lori Trevillyan  
Gary & Marie Trusty  
Trusty Table  
George Twitero & Shari West Twitero  
Larry Von Wald  
**Brooke & Dan Wegener**  
Bobby Wessel  
David & Terry Whiting  
Marcia Whiting  
Cody Work  
Erika Young

## — KEY —

**BOLD TYPE** denotes gifts designated to Children's Inn

- \* Gifts given through the Sioux Falls Area Community Foundation
- o Gifts given through the Black Hills Area Community Foundation
- § Gifts given through the South Dakota Community Foundation
- † Deceased



*The newest book in a series by Tom Roberts, illustrated by Hector Curriel*

## Something About Christmas

The newest Tom Roberts Christmas story from Children's Home Society was published during 2020, just in time for the holiday season. *Something About Christmas* is a poetic story of a little boy who is sad that Christmas is over and that decorations must be put away. His parents help him realize that Christmas continues to exist in the dawn of each new day.

# RESTRICTED GIFTS

## Gifts Given January 1–December 31, 2020

These gifts were given to purchase a specific item or service, or to be used for a designated purpose. Gifts given to Children's Inn are noted in **bold** type.

### \$10,000 +

Madsen Family Education Scholarship at CHS Endowment\*

### \$5,000 +

Bayer Fund  
Arnie Hauge  
Rosenbauer Firefighting Technology

### \$2,500 +

Drew & Deirdre Goodwin  
Jason & Angie Langford  
Madsen Family Creative Arts Education at CHS Endowment\*  
Red Rock Bar & Grill  
Joshua Ripley  
Scooter's Coffee House  
Jaysen Stevenson & Sara Curry Stevenson  
Those Guys A.B.A.T.E.

### \$1,000 +

Percy & Marjorie Amundson Family Endowment\*  
Gary & Gloria Brown  
Dr. Joseph & Amy Cass CHS Excellence in Caring Endowment\*  
Critters Restaurant & Bar  
Michael Day & Diana Dufur-Day  
Dollar General Literacy Foundation  
Embrace Church, Sioux Falls  
Dr. James Evans  
Danelle Hauge  
Roger Haugo  
Helen Madsen Endowment For CHS Prevention Initiative\*  
Dave & Tessa Howard  
Michael & Bunny Howes  
**Kiwanis Club of Sioux Falls**  
Mitch & Marilyn Klein  
Dr. Eric & Jennifer Larson  
Liz Lloyd  
Vicki Madsen Adoption & Foster Care Endowment\*  
Madsen Family Library at CHS Endowment\*  
Erv & DeMaris Nesheim  
Jerome Ommen  
Laura Pierce  
Don & Ann Platt\*  
George & Donna Roberts  
John & Kay Rozell  
Wayne & Gaye Sander  
Donor Fund, a Donor Advised Fund of The U.S. Charitable Gift Trust  
Sioux Valley Energy  
Sisson Printing Inc.  
Splitrock C-Store  
Van Beek Family Foundation Agency  
**Van Beek Family Foundation Agency**

Richard & Donna Wilson  
Thomas & Micah Worsley

### \$500 +

Arrowhead Country Club Members  
Dan & Leslie Ashmore  
Michelle Attig  
Black Hawk Community Church Ladies Aid  
Black Hills Federal Credit Union Employees  
Dorothy Chronister  
Darin & Janet Cox  
Firehouse Brewing Company  
Gregory & Connie Forstner  
Curt Friesen & Julie Anderson Friesen  
Tom & Ann Marie Fullerton, MD  
Highmark Federal Credit Union Employees  
Links to Literacy Endowment\*  
**Little White Dog Pet Photography**  
Jim & Diane Lockwood, Sr.  
David Loving Memorial Fund\*  
Gary & Linda Lundeen  
**Madsen Family Library at Children's Inn Endowment\***  
Lou Madsen CHS Beautification Endowment\*  
Ed & Karen Miller  
Dr. Isaac & Holly Morgan  
Susan Nelson  
New Beginnings Faith Church, Sioux Falls  
Robert & Kathleen Paul  
Brian & Brittany Richman  
**Sisson Printing Inc.**  
**Soroptimist International, Sioux Falls**  
St. Paul's Lutheran School, Rapid City  
Sun Surety Insurance  
**Mary Helen Thomas**  
Dr. Patrick & Jan Tibbles

### \$250 +

Adam Attig & Jennifer Ringer  
Big D Store  
Black Hills Wind & Fire Motorcycle Club  
Don & Cherril Brown  
Jon & Karla Brown  
Bill & Lynne Byrne  
Bill & Tam Colson  
Jamie & Laurie Dysthe  
**Rose Fink**  
Bill & Mary Garry  
Margret Griebel  
Steve & Susan Hauff  
**Steve & Susan Hauff Bill & Jolynn Hennrich**  
Steve & Lisa Lewis

Marco Technologies  
Scott & Susan Matthew  
Paul & Connie Matzner  
Jeremy & Emily Maurice  
Roxann Meyer  
Cesareo Meza  
Orion Land Mark Employees  
Darin Palmer & Kari Clark  
POET Employees  
Steve & Kathy Sanford  
Silverstone Group Employees  
STJ Enterprises LLC  
Taco John's  
David & Nancy Van Holland  
Rebecca Van Otterloo  
Donna Williams

### \$100 +

"As Seen on TV"  
Christmas Party  
Casey & Angela Besler  
Bethany Women of the ELCA, Hurley  
Loren & Sheila Boyens  
Mark Capitano & Dana Brandys  
**Colman Lutheran Church**  
Connie Colwill  
Ross & Tracy Crum  
John Custy  
Deadwood VFW  
James Dodson  
Bruce & Pat Dysthe  
Jim & Elaine Emery  
Dr. Michael & Kathleen Fiegen  
Flyt (Alpine Inn)  
Kevin & Joanne Gardner  
Good Dominion Tattoo Company  
Dave & Jan Grage  
Mark & Pat Graham  
Family of George Griebel  
Nordell & Jennifer Griebel  
Sonia Griebel  
**Lois Hanson**  
Les & Linda Hengeveld  
Blake & Marcia Hoffman  
Josh Holle  
Boyd & Dody Hopkins  
Howdy's  
Tom & Melissa Howes  
Jack & Mary Jacobs  
Keith & Joann Kinsey  
Kim Ladd  
Edward & Sherry Lake  
Ian & Connie Libby  
Twyla Lippert  
Mike Lynde & Cheryl Holle-Lynde  
Maverick's Restaurant  
D. Richard Maxwell  
Dr. Patrick & Kathleen McGreevy  
Craig & Elizabeth Miller  
Monarch Sales  
Kammi Myers  
Dr. James & Carol Oakland  
Dr. Michael & Deborah Olson

Dr. Michael & Karen Pekas  
Jean Petersen  
Devona Prostrullo  
James & Diane Reiners  
Rushmore Rock Crawlers  
**Eric Sather**  
Marian & John Scarbrough  
John Schanberger  
**Dennis & Roxie Schmitz**  
Family of Eunice Schwader  
Nancy Scott  
Jeremie Slagle & Jill Grevios Slagle  
**Jessica & Aric Snyders**  
South Canyon Lutheran Church Eunice Circle, Rapid City  
State Farm Companies Foundation  
Patrice Steinman  
Patricia Sterud  
Kerry & Bonnie Stiner  
Teacher's Helper  
Francis & Kathy Toscana  
Vince & Sheri Weber  
Dr. Randal & Suzanne Welter  
Tom & Elizabeth Wilson  
Robert & Charlene Zylstra

"We were fortunate to grow up in happy, loving and safe homes, and we provided this same type of environment for our three daughters when they were growing up. Our girls are married and have children of their own and it gives us comfort to know that our grandchildren feel loved and safe each and every day. We know this isn't the case for everyone and wanted to give to those who are not as fortunate. We chose CHS knowing they would be able to do this with our donation."

**DAN & LISA  
VAN DEN BERG**

The following list shows a few examples of how restricted gifts were used at CHS:

- Reading curriculum for the school
- New Beginnings baskets for women at Children's Inn
- Outings and trips (Twins games, Wild Water West, etc.)
- Birthday and Christmas gifts

## Gifts Given January 1–December 31, 2020

Honor gifts are given in gratitude, in tribute, or in celebration of family members, holidays, birthdays or special occasions. Honor gift card packets are available by request. Due to space limits, only gifts of \$20+ are listed. Children’s Inn gifts are noted in **bold** type.

**Dennis & Lizette Aanenson**  
Debra Kennedy

**Joe & Joan Ahlers**  
Steven & Susan Ahlers

**Mavis Amundson**  
Peter & Lauren Stavenger

**Landen Bartels’  
Great Grandparents**  
Brent & Emily Bartels

**Rick & Rebecca Belsaas**  
Robert & Dorothy Lees

**Rex Bishman**  
Ann DeVany

**Robert Bogue**  
Krista & Kellen Taylor

**Vicki Buseth**  
Amy Carter  
Staci Kropuenske  
Lana Schwartz  
Allen & Pat Svennes

**City of Sioux Falls  
Parks & Recreation**  
**JSA Consulting Engineers/  
Land Surveyors Inc.**

**Jon Crane**  
John & Jan Brewer  
Bill & Tam Colson  
Compliance Vitals LLC  
Doug & Darla Crown  
Independent Optical  
Karl & Jill Jegeris  
Jack & Vianne Kucera  
Ray Osloond & Deb Rawlins  
John & Kay Rozell  
Theresa Schreiner  
Bob & Jo Anna Warder  
Rick & Mary Weber  
John & Dorina Weigelt

**Dennis & Linda Daugaard**  
Maggie Paukey

**Diane DeVito**  
Lewis & Renee Weinberg

**Jill Dillenburg**  
Geraldine Hento

**Jacob Ellefson**  
Christopher &  
Robbin Nelson

**Libby & Evan Ernst**  
Liz Lloyd

**Leif Evans**  
Daniel & Roxanne Evans

**Jenna Fischer**  
Laura Neth

**Kathy Fox**  
Kara Fox

**Hailey Frankman**  
Cynthia Cummins

**Tuesday Frankus**  
Terra Shepherd Boutique  
Corey & Kerrie Vilhauer

**Dr. Daniel Franz**  
Rapid City Medical  
Center LLP

**Warren Graber**  
**Graber & Associates**  
Employees

**Chad & Melissa Hansen**  
David & Diane Hansen

**Chris & Melissa Hansen**  
David & Diane Hansen

**Marlinda Hay**  
Maria Kollbaum

**Joe Herdina**  
Sumption & Wyland

**Bill & Carolyn Hinks**  
Liz Lloyd

“Thank you for all  
you do to make a  
positive impact in  
the lives of those in  
our community!”

CRAIG & PAT LLOYD

**Hobi**  
Kathryn Bailey

**Blair Hodges**  
Scott & Nancy Hodges

**Kaleb Holm**  
Terry & Lynette Holm

**Gina Hopkins**  
Dr. Craig & Michelle Rife

**Cassie Rose &  
Travis Hubbard**  
Miranda Rose

**Ellie & Ari Huber**  
Liz Lloyd

**Steve & Pam Jansa**  
Erin Jansa

**Karl Jegeris**  
Steve & Mary Helen Flanery

**Jim & Judy Jibben**  
Dennis & Mary Kay Ihnen

**Jerry Johnsen**  
Wanda Johnsen  
Wanda Johnsen

**Melissa Johnson & Lyric**  
Allison Mickelson

**Ginger Kapsch**  
Bev Doorenbos

**Alicia Kelderman**  
Lyle & Camilla Graff

**Laurie & Jack Kloepfer**  
Nancy Engebretson

**Koch Hazard Architects**  
Skold Companies

**Nate Lacek**  
Guy Ford

**Jeff & Julie Lault**  
Sharon DeHaan

**Michelle Lavallee**  
Steve & Mary Helen Flanery

**Lloyd Construction &  
Development**  
**JSA Consulting Engineers/  
Land Surveyors Inc.**

**Vicki Madsen**  
Marlys Drewes

**Carson Maney**  
Robert Morris

**An’Drew Martinez**  
Cynthia Cummins

**Chandler Mayo**  
Edith Hoogendoorn

**Media One Inc.**  
KeyMedia Solutions

**Mike & Marie Metli**  
Ann Metli

**Grandchildren of  
Alyce Miles**  
Norbert Miles

**Elizabeth Mohr & Family**  
Helen Mohr

**Debra Moritz**  
Andrea Waitt Carlton  
Family Foundation

**The Don Noble Family**  
Doris Graeber

**The J R Noble Family**  
Doris Graeber

**Brianna Palomaki**  
Courtney Swift

**Grace Peterson**  
Carla Midden

**Janice Radach**  
Angela Caudill

**Kris Reaves**  
Keith & Jessica Perkins, III

**Benson & Brayden Rhoney**  
Liz Lloyd

**Kobi Ringling**  
**Bill & Dee Samuelson**  
**Ronda & Craig Samuelson**

**Brian Rotert**  
Jill & Peter Lerdal

**John & Kay Rozell**  
**Tri State Wholesale**  
**Flooring Inc.**  
Employees

**Darlene Ruud**  
David & Janis Ruud

**Adyson Sand**  
Cynthia Cummins

**Michael & Sarah Schulte**  
Bill & Lynne Byrne

**Vicki Sieck**  
**Cornerstone Financial**  
**Solutions Inc.**

**Sioux Falls City Engineering**  
**JSA Consulting Engineers/  
Land Surveyors Inc.**

**Jim &Carolynn Stavenger**  
Derek & Molly Vetsch

**Amber Stevens**  
Elaine Romero-Douglas

**Mike & Pam Stolen**  
**Beverly & Delmar Klassen**

**Jim & Holly Van’t Land**  
Jorjann Blake

**Zane Vogt**  
Dr. Bruce & Judy Vogt

**Kelsey VonEye**  
Karen VonEye

**Kortni Walker**  
**Weisser Distributing Inc.**

**Susan Welbig**  
Amanda Helphrey

**Linda Wells**  
Gary & Connie Schickedanz

**Jacob & Andy–  
Wells Fargo Employees**  
Brian & Danielle Meyer

**Sheila Williams**  
Carmen Morrison

**Sue Williams**  
**Helen Oppold Blair**  
**Memorial Fund\***

**Gary & Kathleen Winterton**  
Charles & Emily O’Hara

**Patricia & Sylvia**  
**Winterton-Hyslop**  
O’Hara Family

**The Zimmerman Family**  
Doris Graeber

### – KEY –

**BOLD TYPE** denotes  
gifts designated to  
Children’s Inn

\* Gifts given through the  
Sioux Falls Area  
Community Foundation

o Gifts given through the  
Black Hills Area  
Community Foundation

§ Gifts given through  
the South Dakota  
Community Foundation

† Deceased

## Gifts Given January 1–December 31, 2020

Gifts-in-Kind are donations of tangible items, goods, or services. A few examples include Christmas presents, Easter baskets, auction items for fundraising events, consumable household goods for Children’s Inn, event passes, print materials, and media support. Children’s Inn gifts are noted in **bold** type.

- \$98,000 +**  
Midco
- \$60,000 +**  
Midwest Communications
- \$50,000 +**  
**Dakota News Now**  
Midco  
**Results Radio**
- \$30,000 +**  
KELO TV Stations  
Schulte Subaru of  
Sioux Falls
- \$25,000 +**  
Eide Bailly LLP
- \$15,000 +**  
**Vision Video**  
**Interactive LLC**
- \$10,000 +**  
Dakota West Books LLC  
Monument Health  
Rosenbauer Firefighting  
Technology
- \$5,000 +**  
Susan Ahmad  
Flatland Flyways  
**Charlene & Scott Harris**  
**Hauff Mid America Sports**  
**Hy-Vee Diaper Drive**  
**Lorie Kedik**  
Knights of Columbus  
St. Therese Council  
No. 8025  
Novak Sanitary Service  
**Results Radio**  
**Wish-Inn Mission**
- \$2,500 +**  
ASGD Brand  
Strategy + Design  
Black Hills Federal  
Credit Union  
Desperados Cowboy  
Restaurant  
Ellsworth Monthly  
Volunteers  
First PREMIER Bank  
Trust Department  
Greater Good  
**Greater Good**  
Jerry Green  
Gunderson’s Fine Jewelry  
**Kid’s Inc. Laura Wilder**  
**Elementary**  
Kieffer Sanitation  
Michelle & Paul Lavallee  
Menards Sioux Falls East  
Orion Land Mark  
Orthopedic Institute  
Employees  
Ponderosa Screen  
Printing & Embroidery  
**St. Katharine Drexel Parish,**  
**Sioux Falls**  
Vast Broadband, Rapid City  
Vision Video Interactive LLC
- Washington Shoe Company  
Linda Wells
- \$1,000 +**  
625 Zany Lane Designs  
“As Seen on TV” Christmas  
Party, Sioux Falls  
Black Hills Stock Show  
Foundation  
**Boen & Associates Inc.**  
Buffalo Wild Wings  
**Catholic Daughters of**  
**the Americas Court**  
**St. Christina, Tea**  
Central States Fair Inc.  
Christmas Dance,  
Sioux Falls  
Mary Christopher  
Citibank (South Dakota), NA  
Jon & Gail Crane  
Brian Criss, DDS, PC & Staff  
**Dakota Wheelin’**  
Mari DeBerg  
Doug & Shawn DeGroot  
**Dental Essence**  
Down to Earth/  
About Face Masks  
Rose DuBois  
Embrace Church, Sioux Falls  
Full Circle Tattoo  
**Furniture Mart**  
**Great Bear Ski Valley**  
**Martha Gregg**  
Ralph & Sylvia Grode Family  
Hermosa School  
Becky Lowe’s Class  
Highmark Federal  
Credit Union  
**Chad & Darcy Hoff**  
**Holy Spirit Church,**  
**Sioux Falls**  
The HomeSlice  
Media Group  
Intek Cleaning & Restoration  
**Interstates Control Systems**  
**& Interstates Foundation**  
Dawn Johnston  
Kaskade Builders Inc.  
Kidtopia  
L.G. Everist Inc.  
Landscape Garden Centers  
**Living Hope Community**  
**Church, Tea**  
**Mega Strong Fitness**  
Menards Inc.,  
Sioux Falls West  
Modern Woodmen of  
America  
New Beginnings Faith  
Church, Sioux Falls  
Noon Optimist Club of the  
Black Hills, Rapid City  
Our Savior’s Lutheran  
Church, Sioux Falls  
Outdoor Gear Inc.  
Pajama Program  
**Pajama Program**  
**Pajama Program**  
**Reading Center**
- Peace Lutheran Church  
Quilters, Rapid City  
Perdue Woodworks Inc.  
**PetSmart 2763**  
**Pipeline Construction**  
**Operations**  
**Plains Commerce Bank**  
Platinum Code  
Angela Poches  
POET  
**Jennifer Poulos**  
The Prairie Club  
Quilters for Christ, Kadoka  
**Pete & Carrie Randazzo**  
Rapid City Kiwanis Club  
Paul Rausch  
Riddle’s Jewelry  
Joshua Ripley  
Rockerville Fire Department  
& Sheriff’s Deputies  
Sarah Rogers  
Scheels All Sports  
**Sioux Falls Corvette Club**  
Sioux Falls Truck & Trailer  
Jayme Sloat  
Theresa Sparrow  
**St. Michael’s Parish,**  
**Sioux Falls**  
**Pastor Carli Steffes**  
Thompson Electric  
Company  
**TJ Maxx**  
Hanna Trapp  
**Tyler Goff Group LLC**  
Dennis & Nancy  
Van Der Weide  
Wine Time On Main  
Stephen Wolf  
Woods, Fuller, Shultz &  
Smith PC
- \$500 +**  
The 1880 Train  
A&B Business Solutions  
Charles & Jill Arbeiter  
Armstrong Shows  
Bob & Vivian Bailly  
Beaver Creek Logworks  
**Roberta Birkman**  
Black Hills Oral Surgery &  
Dental Implant Center–  
Dr. Crossland’s Staff  
Black Hills Quilters Guild,  
Rapid City  
Blessed Sacrament Quilters,  
Rapid City  
**Boss’ Pizza & Chicken**  
Brandon Quilt Guild  
**Calvin Christian Reformed**  
**Church, Rock Valley, IA**  
**Casey’s**  
Catering by Cleavers  
The Country Club of  
Sioux Falls  
Crabtree Amusements  
**Dakota Lettering**  
Dakota Regional  
Periodontics  
Dakota Spirit  
**Bruce Elkins**
- M. Felty Photography  
**First Christian Reformed**  
**Church, Sioux Falls**  
First PREMIER Bank  
**First Reformed Church,**  
**Sioux Falls**  
Fisher Beverage Inc.  
**Donald & Deanna Gerdes**  
Gold Star Amusements  
Grace Lutheran Church,  
Sioux Falls  
**Green 4 Ever**  
Hauff Mid-America Sports  
Hauge Associates Inc.  
**Boyd & Maureen Heckel**  
**HelpLine Center**  
Henkel Corporation  
**Becky Henning**  
**Bill & Jolynn Hennrich**  
**Henry Carlson Company**  
**Carolyn Hieb**  
**Charlene Hopf**  
Hotel on Phillips  
H-S Precision  
Paul Jensen  
**Darla Johanson**  
Chrissy Johnson  
Journey Elementary –  
1st Grade classes  
**Brenda Kneip Bostic**  
**Don Kranz**  
Kevin & Garn Kuiper  
Kusek Family Dentistry  
& Implants  
Rachel Lamfers  
**Living Word Free Lutheran**  
**Church, Sioux Falls**  
Lord of Life Lutheran  
Youth Group, Sioux Falls  
Maswik Lodge  
Maurice Quilt Club, IA  
Minnwest Bank  
Jerry Mootz  
Mark & Michelle Mordhorst  
**Cary Myers**  
**Neighborhood Ride**  
Jon & Joanne Nelson  
Nyberg’s Ace  
Old Elm Colony  
Ophthalmology Ltd.  
**Sheri Ouellette**  
Pajama Program  
Reading Center  
**Jay & Melanie Parsons**  
**Peace Lutheran Church,**  
**Sioux Falls**  
Pheasant Creek Outfitters  
Physicians Mutual  
Pixelbox  
**Laura Pomes**  
**Precious Angels LLC**  
**Procure Hope Altruism**  
**In Action**  
Raven Industries Inc.  
Charley & Gwen Ray  
David & EJ Reid  
**Steve & Terri Reilly**  
Judy Rickard  
**Emily Rollason**

Rush Mountain  
Adventure Park  
Rushmore Plaza Civic Center  
Sammons Financial Group  
**Sanford Wellness Centers**  
Marian & John Scarbrough  
**Sertoma Butterfly House  
& Marine Cove**  
**Jim & Kathy Sideras**  
Joy Simco  
**Sioux Falls Flyers**  
Sioux Valley Energy  
Sioux Valley Optimist Club,  
Sioux Falls  
Stitches of Love/Maurice  
Reformed Church, IA  
**Sweetgrass Soapery**  
Target Card Services  
Tata Consultancy Services  
TransUnion LLC  
**Trinity Lutheran Church,  
Canton**  
Twilight First Aid & Safety  
United Sioux Tribes  
Vader & Landgraf Inc.  
Valley Exchange Bank  
Dr. Scott & Helen Van Dam  
Bernita VanderSchaaf  
**Vern Eide Honda**  
**Vibrant Body Art**  
Jean Volkers  
Waste Equipment  
Weisser Distributing Inc.  
**World Market**  
**Zion Lutheran Church,  
Garretson**

### \$250 +

605 Real Estate  
**Abiding Savior Free  
Lutheran, Sioux Falls**  
**Active Faith Chiropractic**  
Luke Albers  
All American Gymnastics  
& Inflatables  
Kathleen Andresen  
Arctic Glacier  
**Aaron & Lisa Asmus**  
**Augustana Lutheran  
Church, Sioux Falls**  
Family of Clyde Fred Autio  
**Avera Cancer Institute**  
**Hematology & Bone  
Marrow Transplant**  
B.I. Performance Services  
Kate Bartell Nowak  
**Beautique**  
Justin Bentz  
Bethlehem Lutheran  
Quilters, Rapid City  
Bethlehem Evangelical  
Lutheran Church,  
Rapid City  
Black Hills Church of Christ,  
Rapid City  
Dave & Cheryl Boer  
Arne Bortnem  
**Lisa Bowen**  
**Brandon Lutheran Church**  
**Jenny Bruin**  
Cantalope Family  
Foundation  
Sara Cantine  
**Larissa Carlson**  
Betty Carson  
**Catholic Daughters of  
the Americas Court**  
**Mother Teresa No. 2510**  
**Wanda Chaney**  
Children's House  
Montessori-Parastou  
Ghazvini Classroom

**Complete Fitness**  
Creative Surfaces  
**Cub Scout Pack 371**  
**Kirk Danielson**  
Michael Day &  
Diana Dufur-Day  
**Shonna DeJager**  
**Kendra Dexter**  
Jennifer Dreier  
**Arlene Drew**  
Jeff & Cammie Dysthe  
David & Catherine Eddy  
Edison Middle School  
Elkhorn Ridge Resort &  
Golf Club  
Elks Golf Course  
ESA Alpha Alpha, Sioux Falls  
**Tresse Evenson**  
**Find Your Fabulosity**  
**First PREMIER Bank**  
**First PREMIER Bank  
Minnesota Branch**  
**Brogan Flitter**  
**Connie Foss**  
Donna Garza Larson  
Kyle & Tammi Gilley  
**Girl Scout Troop 40278**  
Glanbia Nutritionals Inc.  
Employee Relations  
Committee  
Golf Club at Red Rock  
Good Shepherd CLC  
Lutheran Church,  
Rapid City  
**Grace Reformed Church**  
**Women of Grace, Corsica**  
Great Plains Watercolor  
Society  
**Karen Gubbrud**  
Austin & Melinda Harrison  
Karla Hasche  
**Cheryl Haugen**  
**HDR Inc.**  
**Heiman Fire Equipment**  
Gary Hermanson  
Hillcrest Church, Sioux Falls  
Hotel Alex Johnson  
**Owen & Jan Hotvet**  
**Brittany Huenink**  
**Sawyer Huff**  
Josh & Braxton Janssen  
**Dawn & Marvin Jensen**  
**Tiffany Jensen**  
Mary Jeremiason  
**Jennifer Josko**  
**Journey of Hope,  
Sioux Falls**  
**Joyce Karl**  
**Judy Kearney**  
Kidprenuer  
**Kimball Protestant Parish**  
King Law Firm  
**Don & Alice Kirby**  
**Aaron Klimes**  
Knecht Home Center  
**Vicki Lanier**  
**Tommy Lindberg**  
Liv Hospitality LLC  
**Scott Lund &  
Tami Haugen Lund**  
Jackie Maguire  
**Mainstream Boutique**  
**Marco Technologies**  
Gwen Martin  
**Carol McEntee**  
Denny & Kim McKay  
**Memorial Lutheran Church**  
**MO Synod, Sioux Falls**  
**Stephanie Minkler**  
Mobile FX  
Sue, John & Jacklyn Mollison

Monument Health Medical  
Clinic-Aspen Center Staff  
Dustin & Sarah Morrison  
**Julie Mueller**  
Kent & Cathy Mundon  
My Very Own Blanket  
Lowell & Mary Ann Myers  
**Nathanael Lutheran  
Church, Alcester**  
**Jan Nelson**  
Omer & Mary Nelson  
Erv & DeMaris Nesheim  
North Point Trust Company  
Northern Hills Quilt Guild,  
Spearfish  
**Adam Nusbaum**  
**Nyberg's Ace**  
**One American Bank  
Employees**  
**Orange Theory Fitness**  
**OSHA United States  
Department of Labor**  
**JoAnn Oyen**  
**Wayne & Michelle Paulson**  
**Diane Pinkelman**  
**Amber Poulos**  
**PREMIER Bankcard Inc.**  
**Belinda Prostrollo**  
Quality Brands of the  
Black Hills  
Nicole Raml  
Rapid City Rush  
Professional Hockey  
**Red Robin**  
**Diane Rollag**  
John & Kay Rozell  
**Troy Rubin**  
The Rushmore Hotel &  
Suites  
**Sanford Health**  
**Occupational Medicine**  
Lari, Brian & Ellanor Seaver  
Jim & Kathy Sigle  
Simpson's Printing  
**Sioux Falls Figure  
Skating Club**  
Sioux Falls Flyers  
**Sisson Printing Inc.**  
**Michael & Stephanie  
Skuodas**  
**Evelyn Slaathaug**  
**South Dakota Air  
National Guard**  
South Dakota Wildland Fire  
**South Pointe Apartments**  
**St Johns Lutheran Church,  
Pipestone, MN**  
St. Michael's School  
**Theresa Stahl**  
Gloria Steele  
Stiles Faith Group  
**Target West Side**  
**Connie Thomas**  
**Barb Thompson**  
Tim Thompson  
Thrivent Financial  
Marion Toillion  
**Kevin Topolinski**  
Dena Triebwasser  
**Trinity Lutheran Church,  
Platte**  
**Trinity Lutheran Church**  
**Quilters, Mitchell**  
**Ultimate Dance & Cheer**  
Unique Signs Inc.  
**United Methodist Church,  
Colton**  
USD Sanford School of  
Medicine  
**Bill & Joann VanDenHemel**  
Al & Elaine Vanderlaan

**Cal Veurink**  
**Brad & Lori Visker**  
**Marie Vlaminc**  
Volunteers of America  
Dakotas  
**Carissa Waddell**  
Washington Pavilion of  
Arts & Sciences  
Waste & Recycling Solutions  
& Technology  
**Wayne Weisser**  
Wells Fargo Bank  
West Lyon Elementary  
School  
**Kirstin Westra**  
Brett & Stacey Wickersham  
Mark Wiggs  
**Wings Gymnastics  
Academy**  
Wisco Industries  
**Liz Wolf**  
**Stephen Wolf**  
Patrick & Melissa Wood  
**Xcel Energy**  
Brian & Jody Young

### \$100 +

**Active Generations**  
**Janet Adams**  
Akela Spa  
**Kris Albers**  
Tim & Sandy Alick  
**Ron Allen**  
**Mussie Alperowitz**  
Alvine Weidenaar LLP  
**Mavis Amundson**  
**Peggi Andal**  
**Jordan & Sarah Anderson**  
**Apple Tree West**  
**Julie Arnold**  
Arrowhead Country Club  
ARTisan Skin & Laser Center  
**Avera Dawley Farms**  
**Avera Heart Hospital &  
North Central Heart  
Clinic Employees**  
**Avera Heart Hospital  
Employees**  
**Avera McKennan Hospital**  
**Housekeeping  
Department**  
**Jane Bade**  
Badlands Broadcasting  
**Gregory Baete**  
Bank Midwest  
**Kimberly Banks**  
Jim & Laura Barnett  
**Beaver Valley Lutheran  
Church, Valley Springs**  
Sandy Beck  
**Rich & JoAnn Bellin**  
**Benton Lutheran Church,  
Crooks**  
**Cory Berg**  
Best Western Ramkota  
**Bethesda Church, Bristol**  
**Bethlehem Lutheran  
Church, Inwood, IA**  
**Biggs Sports Bar & Casino**  
**BitGo Trust Company**  
**Mark Black**  
Black Hills Area Dental  
Black Hills Reptile  
Gardens Inc.  
**Elise Blaseg**  
**Layne Bloom**  
Shellie Bluhm  
**Kathy Boadwine**  
**John & Lori Bockenstedt**  
**Olivia Boese**  
**Nick & Kari Borns**  
**Becky Bosler**

“Our church  
believes in the  
services that your  
organization is  
providing to those in  
need, and we wish  
to support it with  
some of our local  
mission dollars.”

### FIRST PRESBYTERIAN CHURCH

**Cheryl Boyd**  
**Jeff & Laura Boyd**  
**Laurel Braa**  
**Brandon Quilt Guild**  
Bethany Brodersen  
**Ellison Brtna**  
**Marvin Burkman**  
**Ciera Buum**  
**Bill & Lynne Byrne**  
**Sarah Callahan**  
**Calvary Lutheran Church,  
Irene**  
Cambria Suites  
Brian Canning &  
Heidi Johnson  
The Canton Barn LLC  
**Capital Services Employees**  
Mark Capitano &  
Dana Brandys  
**Mark Capitano &  
Dana Brandys**  
Jason & Nicole Carlson  
**Jorge Carmona**  
Certified Labs  
**Jeffrey & Sally Chapman**  
**Judi Christensen**  
Matt & Marie Christensen  
**Ava Christians**  
City of Sioux Falls  
Employees  
**Rhonda & Joseph Class**  
Sam Coil  
**Paul & Jean Colon**  
**Compassionate Care  
Hospice**  
**Mary Cooper**  
Travis & Rachel Cordell  
CorTrust Bank Employees  
Cub Scout Pack 117  
The Dahl  
**Dakota Alliance**  
**Soccer Club**  
Dakota Lettering  
**Dakota Retail Technology**  
Dakota Snow LLC  
Dakotah Steakhouse  
Dale's Tire & Retreading Inc.  
**Dalesburg Lutheran Church**  
**WELCA, Vermillion**  
**Kathryn Davids**  
**Jenny Davis**  
**Kathy Davis**

Kim Davis  
**Taylor Deckert**  
 Cara DeHaan  
**Jacob & Catherine Dekkenga**  
 Gertie Denhoed  
 Donna Dhaemers  
 Mary Dick  
 Diane Diekman  
 Kara Dirkson  
**Discount Merchandise Center**  
**Dollar General**  
**Holly & George Donnelo**  
 Judy Donohue  
 Mary Doorn  
**Karen Dunham**  
**Leslie Dunken**  
 Terry & Carolyn Ebright  
**Christine Eitreim**  
 Electronic Systems Inc.  
**Electronic Systems Inc.**  
 Kari Elrod  
**Endeavor Elementary Students**  
 Glen & Carla Eng  
**Kevin & Jill Engelhart**  
 Dave Englert  
**ESA Alpha Alpha, Sioux Falls**  
 Sonja Estes  
**Esurance**  
 Everything Prehistoric Farm Bureau  
**Gene & Martha Fauth**  
**Crystal Fedders**  
**John & Debra Felton**  
 Kearstin Ferguson  
**Kenneth & Judith Fickbohm**  
 Rose Fink  
**First Congregational Church, Sioux Falls**  
 First Gold Gaming Resort  
**First Lutheran Church, Valley Springs**

**First United Methodist Church, Sioux Falls**  
 Teresa Fischer  
 Marla Ford  
**Sherry Ford**  
 Pastor Larry & Kathy Forristall  
**Carol Foster**  
**Connie Foster**  
**Christina Fousck**  
 Laura Francis  
**Paul & Sara Francis**  
 Dr. Jennifer Friedman & Clients  
**Curt Friesen & Julie Anderson Friesen**  
**Diane Fueston**  
 Bonnie Funk  
 Ralph & Mildred Galyen  
 Good Spirits Fine Wine & Liquor  
**Michelle & Efrain Dario Gonzalez**  
**Good News Reformed Church, Sioux Falls**  
**Grace Lutheran Church Endowment Fund, Luverne, MN**  
**Joellen Groethe**  
**Kerry Grogan**  
**Mark & Stacy Gross**  
 Gunderson, Palmer, Nelson & Ashmore LLP  
**Kristi Gustafson**  
**Dawn Gutnik**  
**Brandi & Lance Haase**  
**Connie Hafer**  
**Connie Hagen**  
**Judy Hallstrom**  
**Cory & Nicole Hansen**  
**Bruce & Lori Lea Hanson**  
**Stephanie Hardwick**  
**Harmony House**  
**Rebecca Haubenschild**  
 Arnie Hauge  
 Roger Haugo  
**Mandy Healy**  
**Sarah Heaton**  
**Jeff Heavlin**  
 Gene & Char Heiden  
 Ashley Heinen  
 Jeff & Kim Hilgenberg  
**Tina Hillmann**  
 Peggy Hisel  
**Grace Hochstader**  
**Lisa & Nick Hofer**  
**Darlene Hoffman**  
 Steve & Terri Hoffman  
 Hope Lutheran Church  
 WELCA, Sioux Falls  
**Lori Hunter**  
 Barbara Hyland  
**Icon Event Hall & Lounge**  
 Indian Creek Lutheran Church  
 WELCA, Meadow  
**Laura Jackson**  
**Kathryn Jacobs**  
**Brian Johnson**  
**Lori Johnson**  
 Jolly Lane Greenhouse  
**Claudia Kapp**  
**Kathy Karpiuk**  
**Spencer & Julie Kaul**  
**Edna Kipp**  
**Roine Klassen**  
**Melissa Klein**  
**Elizabeth Klusmann**  
**Knights of Columbus Splitrock Council, Brandon**  
 Knots of Love  
 Kristy Koeppe

Kohl's  
**Julie Kolseth**  
**Gary & Karen Kratochvil**  
**Kim Kristensen**  
 Marten & Betty Kruger  
 Erica & Aubrey Kurek  
**Rae & Jane Kurth**  
**Patti Kutch**  
**Rebecca LaBore**  
**Donna Lehman**  
 Tom Lewis  
 Lindsay Lindaman  
**Barbara Long**  
**Hannah Lubben**  
**Deb Luettel**  
**Peggy Luke**  
**Philip & Heather Maas**  
 Vicki Madsen  
**Peggy Mahon**  
 Bonnie Marion  
**Greg & Denise Martin**  
 Rhonda Martin  
**Mary Kay Print Shop**  
**Jeremy Mayer**  
**Linda McCoy**  
**Terri McCroskey**  
 Martin & Jan McDonald  
 Linda McEntee  
**Shannan McQuade**  
 Darlene Meester  
 Sharon Meile  
 Bethany Melvin  
 Photography  
 Dennis & Tammy Mettler  
 Sarah Miller  
**Deb Minnich**  
**Modern Woodmen of America**  
**Russell & Julie Moir**  
**Sarah Munce**  
**Bonnie Munoz**  
**Rita Mwele**  
**Nancy Nagel**  
**Shirley Nagel**  
 NAMI South Dakota  
**Rebecca Naser**  
**Ashley Nelson**  
**Chris & Julie Nelson**  
**Kay Nordlie**  
 Northwest Engineering  
**Barbara Nur**  
**Pat Nytroe**  
**Judie O'Brien**  
**Lindsey O'Brien**  
**Alicia & Tyler Olson**  
 Omnitech  
**Alice Ormseth**  
 Open Bible School, Rapid City  
**Our Savior's Lutheran Church, Sioux Falls**  
 Aletha Parke  
**David & Suzanne Parrott**  
**Ashley Patineau**  
 Patterson Dental  
**Denise Patton**  
**Paul & Eileen Paulson**  
**Peace Lutheran Quilters, Rock Rapids, IA**  
**Cathy Perryman**  
**Karlynn Petersen**  
 PetSmart 2763  
**Dave & Lisa Pfannes**  
**Alice Piper**  
**David Pommer**  
**Jan Porter**  
 Chrysti Protsch  
**Jackie Provencio**  
 Qdoba – Rapid City  
 Quality Meats West LLC  
 dba Arby's

**Susette Randal**  
**The Ransom Church, Sioux Falls**  
**Wesley Rasmusson**  
**Sharon Redenius**  
**Samantha Relph**  
 Renner Corner Locker  
**Reynolds Construction Management**  
**Sally Rice**  
**Kirk & Cheryl Rikansrud**  
**Risen Savior Church Youth Group, Brandon**  
**Gloria Ristesund**  
 Rock Ranch  
**Mark & Lisa Rockafellow**  
**Gloria Rolfs**  
**Jamison & Cathy Rounds**  
 Rushmore Rock Crawlers  
**Aly Salguero**  
 SalonCentric  
 Jake Samp & Madison Felty  
**Darrell & Linda Sampson**  
 Dr. Paul & Trisha Sampson  
 Brad Saum  
**Patricia Schaefer**  
**Drew & Nancy Schelhaas**  
 Linda Scherer  
**Anita Schmidt**  
**Jeremy Schreiner**  
**Meagan Schriever**  
**Second Reformed Church, Lennox**  
**Vanessa Sheridan**  
**Molly Sich**  
**Doug & Vicki Sieck**  
**Simon Says Give**  
 Sioux Falls Area Chapter of Oncology Nurses  
 Sioux Falls Lutheran Preschool  
**Sioux Falls Lutheran Schools**  
**Sioux Falls Quilters Guild**  
**Sioux Falls Stampede Foundation for Kids**  
**Siouxland Chapter AACN**  
**Siouxperior Ink**  
**Sally Sisk**  
 Sisson Printing Inc.  
 Jeremie Slagle & Jill Grevlos Slagle  
**Curtis Smith**  
**Kjerstin & Jamie Smith**  
 Shelly Smith  
**Sarah Smoke**  
**Soma**  
**Soroptomist Club, Minneota, MN**  
**South Dakota Chapter of Moms Demand Action**  
**South Dakota State Penitentiary**  
**Southern Hills United Methodist Church, Sioux Falls**  
**SRP Companies**  
**St. John's Lutheran Church, Sioux Falls**  
 St. Paul's Lutheran School  
**Stacy Stahl**  
**Brenda Stange**  
**Mark & Jenn Stavenger**  
**Deb Steiger**  
 Stellar Limousine  
**Glenda Stene**  
**Amber Stetson**  
**Rachel Steven**  
**Mindy Stewart**  
**Patrick Stoner**  
 Carol Storrs

Strider Sports International Inc.  
**Allen & Joyce Stucky**  
 Sturgis Buffalo Chip  
 Jeffrey & Azure Summers  
 Tally's Silver Spoon  
**Lourie Trygstad**  
**Murlyn & Joan Tunender**  
 Donna Tunge  
**Barb Umbreit**  
 Uncle Ed's Specialty Meats  
**United Sioux Tribes**  
**Anna Urban**  
**Corky & Mary Van Eck**  
**Dave & Judy Van Veldhuizen**  
 Vanessen's Hair Design  
**Marilyn VanWyhe**  
**Danielle Vis**  
**Lexi Vogel**  
 Mary Jo & Harvey Vogel  
**Janet Von Auer**  
 Dana Voorhees Jewelry  
 John T. Vucurevich  
 Cancer Care Institute  
**Walgreens**  
**Darlene & Gordon Walker**  
**Alicia Warrington**  
**Kim Wassink**  
**Emily Wassom**  
**Beth & Vinson Weber**  
 Michelle Weideman  
**Larry & Marlene Weires**  
**Laura Weires**  
**West Prairie Lutheran Church, Worthing**  
 West Prairie WELCA Women, Worthing  
**Kelley Westover**  
**Simon & Elizabeth Whealy**  
 White Owl Club  
 Rachelle White  
**Kristi Wiedrich**  
**Glenn & Cynthia Wika**  
**Randall Wildeman**  
 Brian & Paula Williams  
 Deb Wills  
**Misty Wilson**  
**Bailey Wintersteen**  
 Witful LLC  
**Kevin & Laurie Wohlleber**  
 Wolfie's Liquor Spot  
 Mike & Jane Wolforth  
**Barbara Young**  
 Young Professionals Group  
**Carol Zingler**  
**Zion Lutheran Church**  
**Women of ELCA, Hartford**  
**Gretchen Zolty**

– KEY –

- BOLD TYPE** denotes gifts designated to Children's Inn
- \* Gifts given through the Sioux Falls Area Community Foundation
- o Gifts given through the Black Hills Area Community Foundation
- § Gifts given through the South Dakota Community Foundation
- † Deceased



## Caring for the Kids

Due to COVID-19, the Orion Classic/Evening for the Kids was replaced with the Caring for the Kids Benefit. It included a car raffle and an online auction, along with an educational and entertaining half-hour special on KELO-TV.

Event Date:  
**AUGUST 10, 2020**

30-Minute Statewide  
KELOLAND TV Presentation

**NET PROCEEDS: \$439,000**

**DESIGNATION:**  
CHS Program Support

## THANKS TO OUR DONORS AND SPONSORS!

### Challenge Donors

Gordon Spronk and Randy Spronk

### Car Sponsor

Schulte Subaru

### Heart Sponsors

First PREMIER Bank  
Graham Tire  
Great Western Bank  
MasterCard  
Orion Land Mark  
Pipestone  
POET  
PREMIER Bankcard

### Media Sponsors

KELOLAND Media Group  
Midco  
Midwest Communications

### Hope Sponsors

Avera  
Citi  
CorTrust Bank  
Dacotah Bank  
DAKOTACARE  
Daugaard for South Dakota  
JDS Industries  
Sanford Health  
Schoeneman's  
Tri-State Wholesale Flooring  
Weisser Distributing

### Print Materials Sponsor

Sisson Printing Inc.

### Caring Sponsors

Burke Corporation  
CNA Surety  
Steve & Kris Egger  
First National Bank of Sioux Falls  
Fresca Mexican Foods  
Maguire Iron

Marsh & McLennan Agency  
SilverStone Group  
Bob & Maureen Suga  
UPS  
Dr. Bob & Marilyn Van Demark  
Waterbury Heating & Cooling

### For The Kids Sponsors

Acucare Physical Therapy  
Mavis Amundson  
Dr. E. Paul Amundson  
Boen & Associates  
Harold & Helen Boer  
Jim Bork Enterprises  
Rick & Holly Brunick  
Jim & Kim Burma  
Cadwell Sanford  
Deibert & Garry  
Paul & Mary Ellen Connelly  
Davenport Evans Lawyers  
Tim Dougherty & Karen Schreier  
Eide Bailly  
Envive

Dr. David & Julie Ermer  
FastSigns  
First Bank & Trust  
First National Bank of Sioux Falls  
Stan Graber Financial Services  
Tim & Somboon Hamel  
Interstate Office Products  
JMJ Caseworks  
Modern Woodmen  
Fraternal Financial  
Dr. Patrick & Laura Munson  
Dave & Becky Nelson  
One American Bank  
Don & Ann Platt  
Pride Neon  
Dr. Greg & Karen Schultz  
Showplace Cabinetry  
SilverStone Group  
Skinner Financial Services  
Taft Law  
Thompson Law PC

TransUnion  
Vader and Landgraf  
Veritiv  
Viking Label  
Merle & Cecile Wollman  
Workplace Marketing  
Insurance Advisors  
Tom & Lynne Zimmer  
The YES Group

### Steering Committee

Danny Amundson  
Dr. E. Paul Amundson  
Jared Andersen  
Dan LaRock  
Tammy Roberts  
Tom Roberts  
Annie Sehr  
Lisa Steinhouse  
Rick Weber

# MEMORIAL GIFTS

## Memorial Gifts Given January 1–December 31, 2020

Memorial gifts are given in memory of family members or friends who have passed away. Memorial gift card packets are available by request. Due to space limits, only gifts of \$20+ are listed. Children’s Inn gifts are noted in **bold** type.

- Steve Adams**  
Terry Jacobson
- James “Jim” Ahlers**  
**Jean Ahlers**  
David & Pat Nadolski
- Janis & Dennis Porto**  
**Irene Rezac**  
**Lottie Rollag**
- Mildred Ahrendt**  
**Jasper Community Friend**
- Shirley Amundson**  
Allen & Gloria Brown  
Tom & Linda Bunkers
- Joyce Anderberg**  
Vincent & Patricia De Bates
- Marilyn Andersen**  
**Doris Kono**
- James “Jim” Anderson**  
**Bob & Cherie Goehring**
- Mary Anderson**  
Duane & Dorothy Wrage
- Virgel Anderson**  
Terry Jacobson
- Joelle Antonson**  
**Dr. Larry & Lois Lounsbery**
- James Arndt**  
**Darrell & Valerie Horacek**  
**Carolyn Pesicka**
- Dorothy Austad**  
**Audrey Lundquist**
- Margaret Austin**  
Ronald Neri &  
Georgia Austin Neri
- JaNelle Baete**  
**Larry & Marlene Weires**
- Nathan Baier**  
**Charlene & Scott Harris**
- Ruth Barlow**  
Leonard & Joanne Dankey  
Glenda Stene
- Herman & Ardis Bauer**  
**Linda Bauer**
- Barnett Family & Friends**  
Kelly Barnett
- Susan Bartels**  
George & Ramona  
Bartels, Jr.
- Betty Bastain**  
Jim & Diane Lockwood, Sr.
- Phillip Baumberger**  
Allen & Gloria Brown
- Carl Becker**  
Harold & Helen Boer
- Virginia “Ginger” Becker**  
Dr. Robert & Maureen Suga
- Connie Benson**  
Dr. Joe & Amy Cass
- Judy Benz**  
**Active Faith Chiropractic**
- Berneta Berens**  
Rob & Nancy Kunz
- Jim Berg**  
Allen & Gloria Brown
- Wayne Blanton**  
Vincent & Patricia De Bates
- Joseph Boever**  
Allen & Gloria Brown
- Elaine Bokker**  
Allen & Gloria Brown
- Genine Borah**  
**Bob & Cherie Goehring**
- August “Augie” Borchardt**  
Joe & Joan Ahlers
- Howard Braastad**  
**Bob & Cherie Goehring**
- Sandra “Sue” Brown**  
Allen & Gloria Brown
- Dena Bruns**  
**Ardys Fodness**
- Raymond Bunjer**  
Jennifer & Del Johnke
- Maxine Bunker**  
Glen & Caren Straatmeyer
- Robert Burhenn**  
Cathy Stark
- James “Jim” Burke**  
Larry & Carol Lewis
- Coralie Bush**  
**Patti Brende**
- Alvin Bystrom**  
Terry Jacobson
- Viola Callesen**  
Rick & Mary Weber
- Sawyer Chick**  
**Kelli Weinstein**
- Tim Chicoine**  
Patrick & Marcia Quinn
- Comatose Friends**  
Kent & Marcia Martin
- John Cornette**  
Michael & Kristi Cornette
- Gerald “Jerry” Crisp**  
Allen & Gloria Brown
- Raymond Crisp**  
Allen & Gloria Brown
- Greg Cummings**  
**Dr. Larry & Lois Lounsbery**
- Raymond Cuppy**  
Barb Heien
- John Dammer**  
**Larae Fritz**
- Howard Davis**  
Merlin & Barbara Davis
- Thomas “Tom” Davis**  
Terry Jacobson
- Harold & Betty Dean**  
Dennis & Tammy Mettler
- Frances DeBerg**  
**Audrey Lundquist**
- Wanda Dede**  
Beverly Horsted
- Marilyn Denedan**  
**Bobbie Jones**
- Aaron Diedrich**  
Dennis & Tammy Mettler
- Vince Donelan**  
**Joseph & Jolene Donelan**
- David Dossett**  
Terry Jacobson
- Dennis “Denny” Drew**  
Allen & Gloria Brown
- Charles “Chad” Drews**  
**Bob & Cherie Goehring**
- Severin “John” Drobny**  
Michael & Cheryl Immeker
- Thomas Elverud**  
Roger & Bonnie Olson
- James Engberg**  
**Quintin & Mary Honerman**
- Gloria Engel**  
**Thomas & Esther Harmon**  
**Marlys Hohman**
- Grace Entringer**  
Joe & Joan Ahlers
- Joseph & Cindy Murphy**  
Roger & Bonnie Olson  
Dale Tjarks &  
Carol Entringer-Tjarks
- Ray Entringer**  
Dale Tjarks &  
Carol Entringer-Tjarks
- Joseph Erickson**  
Richard & Rhonda Baker
- Sarah Ervin**  
Sabrina Momand
- Steve Evangelista**  
Larry & Shirley Larson
- Nancy Everett**  
Leo Skancke
- Delores “Toodie” Falk**  
**Bobbie Jones**
- Mildred “Millie” Fanciullo**  
**Deb Stewart**
- Sharon Farstead**  
Michael & Gracia Gillespie
- Faye Fastnacht**  
Mettler’s Locker
- Norma Finnell**  
George & Ramona  
Bartels, Jr.
- First Congregational Church**  
**Children’s Home Society**  
**Supporters**  
Brian & Amy Wienk
- Ida Fossum**  
**Grace Ulrikson**
- Margaret Frick**  
Terry Jacobson
- Betty Thompson**
- Barb Frieberg**  
Margret Griebel
- Jean Galpin**  
**Bob & Cherie Goehring**
- Paul Garresch**  
Marjorie Anderson
- Wilbur Gehrels**  
Roger & Bonnie Olson
- Alvin Geidel**  
Kent & Joyce Alford

- Maxine Giesen**  
**Larry & Marlene Weires**
- Maurice “Mory” Gillespie**  
Michael & Gracia Gillespie
- Leila Gilman**  
**Dr. Larry & Lois Lounsbery**
- Richard Gilman**  
**Dr. Larry & Lois Lounsbery**



**SVEN GODWIN**

Son of Kari Clark, SFCH staff

- Sven Godwin**  
Chad & Sarah Javers
- Anetta Goehring**  
**Bob & Cherie Goehring**
- Velda Goehring**  
**Bob & Cherie Goehring**  
**Duane & Gretta Nomansen**  
**Merlin & Laurie Schwartz**
- Gerald “Jerry” Goodale**  
Leo Skancke
- Harmen Greenwood**  
Terry Jacobson



**GEORGE GRIEBEL**

Long-time volunteer and father-in-law of Jen Crisp-Griebel, SFCH staff

- George Griebel**  
Jennifer Barker  
Family of George Griebel  
Margret Griebel  
Nordell & Jennifer Griebel
- Lavon Gstohl**  
Leo Skancke
- Robert & Phyl Gural**  
Kenneth & Jacqueline  
Kessler



- Baby Haecherl**  
Jana Haecherl
- Annie Hall**  
Tom & Tammy Roberts
- Mary Hallberg**  
Dr. Robert & Maureen Suga
- Lois Hallem**  
Richard & Rhonda Baker
- Betty Hansen**  
Jim & Diane Lockwood, Sr.
- Todd Hauge**  
Belbas Charity Fund  
Scheels All Sports
- William "Bill" Haugen**  
Jack & Gina Hopkins
- Darlene Havel Colwill**  
Shirley Erickson
- Jeff Hazard**  
Great Western Bank



**DENNIS HEIDEBRINK**

Friend of CHS;  
uncle to Kim Balk-Phelps,  
CHS staff

- Dennis Heidebrink**  
Bill Phelps &  
Kim Balk-Phelps
- Shirleen Heinrich**  
Allen & Gloria Brown
- Glen Helgeson**  
Allen & Gloria Brown
- Shirley Mae Henderson**  
Theresa Schreiner
- Jordan Hernandez-Bernardino**  
Thomas Hurd Charitable  
Fund at Schwab  
Charitable
- Judy Herting**  
**Mary & Glenn Kelly**
- Gary Hight**  
John & Valoy Nordlie
- Russell Hinkle**  
**Lowell & Norma Wetrosky**
- Charlotte Hinricher**  
Allen & Gloria Brown
- Sherry Hirmer**  
Allen & Gloria Brown
- Evelyn Hofer**  
Family of Evelyn Hofer
- Jake & Norma Hofer**  
Liz Lloyd  
**Audrey Lundquist**
- Jerome "Jerry" Hoffman**  
Michael & Gracia Gillespie
- Lois Holien**  
Allen & Gloria Brown
- Thomas "Tom" Houle**  
**Bernard & Mary Lessen**
- William Huggett**  
Allen & Gloria Brown

- James Hulm**  
**Bobbie Jones**
- Kyle Hurd**  
Thomas Hurd Charitable  
Fund at Schwab Charitable
- Sharon Issenhuth**  
Robert & Karen Appelwick  
James & Gretchen Beecroft  
Jeni Bird  
Ross & Tracy Crum  
David & Nancy Gienapp  
Joe & Judy Keffeler  
Dwight & Linda Lehmann  
Devona Prostrollo
- Bert Itterman**  
Terry Jacobson
- Howard Jacobs**  
Jerard & Barbara Hargis  
Vivian Jacobs  
Daniel & Janice Quinn  
Yvonne Weeldreyer
- Patricia Javers**  
Deb & Dennis Moritz  
Rick & Mary Weber
- Carol Johnson**  
Leo Skancke
- Elnore Johnson**  
Terry Jacobson
- Merle Johnson**  
Liz Lloyd
- Vernell Johnson**  
Harold & Helen Boer
- Virginia Johnson**  
**Robin & Gaylon Anderson**
- Marilyn Jones**  
Marsha Fricks
- Alice Just**  
**Allers Family**  
**Davis Family**  
**Ellen Kelsch**  
**Joseph & Rhonda Wurtz**
- Rosemarie "Rose" Kallemeyn**  
**Bob & Cherie Goehring**
- John Kampmeyer**  
Allen & Gloria Brown  
Larry & Ada Jorgenson



**JEAN KANE**

Former Children's Inn  
staff

- Jean Kane**  
**Debra Brady**  
**Christ Community Church,**  
**Overland Park, KS**  
**Catherine Creecy**  
**Timothy Feathers**  
**Kent & Alma Knoll**  
**Tom & Barb Parlman**  
**Steven Simms**
- Blanche Kansanback**  
Roger & Bonnie Olson

- Jerry Kerns**  
Allen & Gloria Brown
- Marvin Kindt**  
**Bobbie Jones**
- Delores Kirchhevel**  
**Bob & Cherie Goehring**
- Ken Kirkeby**  
Dan & Leslie Ashmore
- Rey & Rubye Klav**  
Nancy & Kosta Constantine



**JUDI KLEIN**

Former CHS foster parent

- Judi Klein**  
Joe & Joan Ahlers  
Arthur & Carol Ehde  
Dale Tjarks &  
Carol Entringer-Tjarks
- Doris Klingenberg**  
**Bob & Cherie Goehring**
- Witten Klingenberg**  
Rachel Case
- Patricia Knutson**  
**Debbie & Richard Peterson**
- Robert "Bob" Kogel**  
Jim & Karli Boelter  
Michael & Gracia Gillespie
- Ronald Konold**  
Michael & Gracia Gillespie
- Don Kraft**  
Dennis & Tammy Mettler
- Warren Kramer**  
Mike & Deb O'Hara
- Edwin Krause**  
Mary Joneson
- Robert "Bob" Krell**  
Leo Skancke
- Grant Kringen**  
Allen & Gloria Brown  
Leo Skancke
- Robert Lamberty**  
Allen & Gloria Brown
- Milford Larson**  
**Dr. Larry & Lois Lounsbery**
- Paul Larson**  
**Audrey Lundquist**
- Evelyn Laue**  
Brenda Laue
- Lauren**  
Erik Hanson
- Anna Mae Lee**  
Dennis & Lizette Aanenson  
Joel & Lois Running  
Jeff & Theresa VerWey  
John VerWey
- Robert Lee**  
Roger & Bonnie Olson
- David Lees**  
Ken & JoAnn Mattheis
- Merlys Lewis**  
**Donna McKetrick**

- Dennis Liberko**  
Charles & Joelle Benson  
Dr. Michael & Janice Farritor  
Jane Hannemann  
Peter & Molly Liberko  
Dr. Timothy & Susan Metz

- Roger Linke**  
Dennis & Tammy Mettler

- Patti Linngren**  
John & Valoy Nordlie

- Ruth Loeber**  
**Olin & Marilyn Odland**

- Lyle Lohman**  
**Janet Lohman**

- Linda Long**  
**Larry & Marlene Weires**

- Kelly Loudenslager**  
Dean Mann

- David Loving**  
Rita Loving

- Russell Lowell**  
**Joan Cleveland**  
**Larry & Karen Corkins**  
**Myra & Larry Feay**  
**Linda & Tom Geraets**  
**Thomas & Sheila Reding**

- Gordon "Gordy" Lyng**  
**Bob & Cherie Goehring**  
Glen & Caren Straatmeyer

- Kathy Macrunnels**  
Michael & Gracia Gillespie

- Jack Mader**  
Roger & Bonnie Olson

- Donald Mairose**  
Allen & Gloria Brown



**JOE MAXWELL**

Former BHCH staff

- Joe Maxwell**  
Adam Attig &  
Jennifer Ringer  
Daniel Attig  
Michelle Attig  
Bill & Tam Colson  
Melissa Cropper  
Kevin & Joanne Gardner  
Richard Maxwell  
Francis & Kathy Toscana

- Don McCuen**  
Roger & Bonnie Olson

- Ralph McKee**  
Allen & Gloria Brown

- Richard "Griff" Mead**  
Dan & Leslie Ashmore

- Elizabeth Mendelson**  
Morgan Mendelson

- Karen Messmer**  
Dennis & Tammy Mettler

- Tom Metli**  
Mike Metli

- Alyce Miles**  
Chris Hansen  
Jerome & Anna Miles

- Chad Miller**  
**Bob & Cherie Goehring**

- Nancy "Nan" & Rodney Miller**  
Michael & Sarah Thury

- Ashley Moe**  
LeAnn Moe & Family

- Iro Mogen**  
Allen & Gloria Brown

- Ronahda "Roni" Mootz**  
Jerry Mootz

- Billie Morgan**  
Michael & Gracia Gillespie

- Melvin Mosemann**  
Mike & Kay Smidt

- Dan Mulder**  
Leon & Shirley Mulder

- Dave Mulder**  
Leon & Shirley Mulder

- Harvey Muller**  
**Barry Muller**

- Akicita Najin**  
Clara Jacob

- Peggy Nauman**  
**Thomas & Marilyn Novotny**

- Delores Nebben**  
Allen & Gloria Brown  
Tom & Linda Bunkers

- Chad Nelson**  
Robert & Sharen Nelson

- Gloria Nelson**  
Thomas & Marilyn Simmons

- Joyce Nelson**  
**Martin & Imogene Haase**  
**Ophthalmology Ltd.**

- Paul Nelson**  
Liz Lloyd

- Orlan Norgaard**  
**Lee Raines**

- Marlow Ohman**  
**Thomas & Marilyn Novotny**

- Judith "Judie" Oien**  
Roger & Bonnie Olson



**JEFF OKERLUND**

Long-time friend of CHS  
and co-founder of  
CHS Orion Classic

- Jeff Okerlund**  
Bill & Lynne Byrne  
Paul & Jean Colon  
Tom & Cathy Kosobayashi  
Deb & Dennis Moritz  
Don & Ann Platt  
Rick & Mary Weber

- Bud Olson**  
Richard & Jeanne Wold

# MEMORIAL GIFTS CONTINUED

**Vernon Olson**  
Roger & Bonnie Olson

**Iva Oltmanns**  
Sandy Watson

**Virginia Oolman**  
**Bobbie Jones**

**Ervin Ortman**  
Sandy Fink  
Dorothy Grevlos  
Rev. & Mrs. Tom Grevlos  
Mr. & Mrs. Tom Murtaugh

**Ozzie Osborn**  
Allen & Gloria Brown

**Lyman "Skip" Overskei**  
Roger & Bonnie Olson

**Lillian Owen**  
**Jim & Kay Owen**

**Julie Packard**  
Allen & Gloria Brown

**David "DJ" Paintner**  
**Bob & Cherie Goehring**

**Arthur Paquette**  
Aaron Paquette

**JoAnn Park**  
Allen & Gloria Brown

**Sylvester "Lester" Patocka**  
**Thomas & Marilyn Novotny**

**Richard Paulson**  
Rodney & Ingrid Place

**Shannon Peck**  
**Marlys Bakker**

**Melvin Penning**  
Allen & Gloria Brown

**James Peters**  
Allen & Gloria Brown

**Jack Peterson**  
Allen & Gloria Brown

**Herman Plagge**  
Joe & Joan Ahlers

**Gertrude Poort Brown**  
Stewart & Cassia Oaks

**Irma Poss**  
Marjorie Anderson

**Trevor Printz**  
William & Patricia Printz

**Helen Pusi**  
**Carol & Perry Amussen**

**Eva Rahlf**  
Tim & Sandy Wulf



**MARGARET  
REARDON**  
Friend of CHS

**Margaret Reardon**  
Keel & Patricia Coddington  
Paul & Mary Ellen Connelly  
Nancy Dillon  
Timothy Dykstal &  
Caroline Burke  
Steve & Kris Egger

Mary Jane Fenn  
Mark & Pat Graham  
Boyd & Dody Hopkins  
Michael & Bunny Howes  
Steve & Pam Jansa  
Dan & Arlene Kirby  
Betty Pfeifle & Family  
Sioux Falls Area  
Community Foundation  
Dr. Robert & Maureen Suga  
Dick & Kathy Sweetman  
Richard & Michelle  
VanDemark

**Ronald Reiff**  
Allen & Gloria Brown  
**Joseph & Cindy Murphy**

**Janet "Jan" Richardson**  
**Lee Raines**

**Sylvia Roberts**  
**Bob & Cherie Goehring**

**Laverna Roth**  
Rip & Marlys Porter

**Nikki Rowenhorst**  
**Robert & Kathleen  
Benedick Nelson Flores  
Mindy Loewen  
Sweetman Construction  
Company**

**Samantha Ruiz**  
**Daria Assman  
Megan Assman  
Bailey Heninger  
Mega Strong Fitness Family  
Deanna Reindel  
Jessica Remme  
Michelle Sorenson  
Charles Stepp**

**James Rumbolz**  
Dr. Robert & Maureen Suga

**Prince Sails**  
John & Valoy Nordlie

**Wayne Salmen**  
Dennis & Tammy Mettler

**Daniel "Dan" Sandven**  
**Kenneth & Judith Fickbohm**

**Jane Ann Schaefer**  
**Vernon Schaefer**

**Doris Scharf**  
Richard & Rhonda Baker

**Merlin Schmidt**  
Allen & Gloria Brown  
Leo Skancke

**Sharon Schuldt**  
**Shirley Stach**

**Arlene Schulenburg**  
Richard & Rhonda Baker

**Ellen Schultz**  
Dennis & Tammy Mettler

**Eunice Schwader**  
Family of Eunice Schwader

**Claudia Scovel**  
Emery & Carol Lee  
Craig & Lonna Reiner

**Sutton Senska**  
Dennis & Tammy Mettler

**Richard "Dick" Sewell**  
**Kenneth & Linda Benson**

**Joanne Sherman**  
**Barbara Myren**

**Vinetta Shonley**  
Dennis & Tammy Mettler

**John Sietstra**  
David & Karla DeJongh

**Ione Simons**  
**Orville Hill**

"I had cousins  
who resided at the  
home in the '50s  
and appreciate  
the work that  
continues to  
provide a home to  
children who need  
a place to live."

LARRY & SHIRLEY  
LARSON

**Rueben Skordahl**  
Terry Jacobson

**Darlene Smart**  
Robert & Sherri Dubbelde

**Dick Sorensen**  
Wireless World

**Robert & Beverly Sorensen**  
Tom & Michele Olsen

**Leo "Jim" Spader**  
**Barbara Myren**

**Annabelle Stach**  
**Shirley Stach**

**Paul Stach**  
**Shirley Stach**

**Carolyn Steffen**  
**Thomas & Marilyn Novotny**

**Janet Stember**  
John & Valoy Nordlie

**Ardyce Stensland**  
Dean & Peg Gulbranson

**Verlyn Streng**  
Roger & Bonnie Olson

**Betty Sunde**  
Roger & Bonnie Olson

**Julie Swier**  
Allen & Gloria Brown

**Mrs. Orville Cable**  
**Bobbie Jones**

**Ruth Thaden**  
Ronald & Linda Thaden

**Gary Thompson**  
Allen & Gloria Brown

**Leland "Lee" Thompson**  
**Barbara Myren**

**Lottie Thompson**  
Dennis & Tammy Mettler

**Christine Thormodsgard**  
Timothy Dougherty &  
Karen Schreier

**Jeannette Torgusen**  
Allen & Gloria Brown

**Royal Traver**  
**Thomas & Marilyn Novotny**

**Les Tuma**  
Terry Jacobson

**LeRoy Van Liere**  
Allen & Gloria Brown

**Glenn Van Ningen**  
Terry & Carolyn Ebright  
**Jennifer & Del Johnke**

**Bonnie Viet**  
**Larry & Marilyn Beers**  
**Loyd & Donna Wagner**  
Wagner Family Charitable  
Trust Fund I

**Nancy Ward**  
Margret Griebel

**James Weelborg**  
Allen & Gloria Brown

**Norman Weires**  
**Larry & Marlene Weires**

**Tamra "Tammy" Welbig**  
Terry Jacobson

**David Westbrook**  
Allen & Gloria Brown

**Donna Whitcomb**  
Jon & Gloria Olson

**Hester White**  
Virginia Myers

**Gayle Willman**  
Mettler's Locker

**Glenna Wilson**  
**Mike & Constance  
Pederson**

**Patrick Wingen**  
Theresa Wingen

**Darlene Smart**  
Theresa Wingen

**Joyce Wiseman**  
Allen & Gloria Brown

**Ronald Wolf**  
Joe & Joan Ahlers  
Allen & Gloria Brown

**Willie Yost**  
Dennis & Tammy Mettler

**Mildred Zeisler**  
Roger & Bonnie Olson

**Orville Zeisler**  
Roger & Bonnie Olson

**Gloria Zellmer**  
Allen & Gloria Brown

**Larry Zimmer**  
Michael & Gracia Gillespie

**Ryan Zoss**  
**Deb Stewart**

**Jacquie Zweep**  
Jacquie's Fund<sup>§</sup>  
**Jacquie's Fund<sup>§</sup>**

## — KEY —

**BOLD TYPE** denotes  
gifts designated to  
Children's Inn

**§** Gifts given through  
the South Dakota  
Community Foundation

# GIFT WRAP BOOTH AND TOY DRIVE

Presented by:  
GREAT WESTERN BANK

Event Date:  
DECEMBER 4-24, 2020

NET PROCEEDS: **\$55,704**

## DESIGNATION:

Children's Inn Program Support

This annual fundraiser in Sioux Falls helps introduce new donors and volunteers during the holidays.



- Results**
- 313 volunteers
  - 970 volunteer hours
  - 4,000 gifts wrapped
  - Over 500 toys, gifts, clothing, and needed items collected for children's birthday and Christmas presents.

- Host**  
The Empire Mall
- Presenting Sponsor**  
Great Western Bank
- Media Partners**  
Dakota News Now  
Midco  
Results Radio

- Other Support**  
Get-N-Go  
Xcel Energy

- Volunteers Leaders**  
Bill Hennrich  
Elizabeth Hjelm  
Rhonda Kelsey  
Kaylee Kropuenske  
Kristi McKinney  
Jen Nuncio  
Charlotte Schwab  
Randy VanDeVendel

Fifteen years ago Jon and Gail Crane recruited auctioneer Denny McKay and founded this auction event to raise funds for CHS. Moved online due to the pandemic, the auction raised a significant donation.

NET PROCEEDS: **\$77,557**

## DESIGNATION:

Children's Home Child Advocacy Center Endowment

# 14TH ANNUAL JON CRANE BENEFIT AUCTION

- Leonardo Da Vinci Sponsors**  
Janet Kahler  
Jack & Vianne Kucera  
Monument Health  
Jo Anna & Robert Warder

- Picasso Sponsor**  
DeMaris & Erv Nesheim

- Vincent Van Gogh Sponsors**  
Michael & Diana Day  
Myles & Jeanette Kennedy

- Botticelli Sponsor**  
Lampert Properties

- Original Artists**  
Jon Crane  
Jill Arbeiter  
Nancy Ashley  
Shawn DeGroot  
Richard DuBois  
(Donated in his memory by his family)  
Dede Farrar  
Jerry Green  
Bonnie Marion  
Sarah Miller  
Mark Mordhorst  
Joanne de Luen Nelson  
Angela Marie Poches  
Gwen Ray  
Ginny Reinicke  
Sarah Rogers

- Kathy Sigle  
Sherry Thurston  
Marion Toillion  
Mike Wolforth  
Melissa Wood  
Nora Wosepka

- Beverage Sponsors**  
A & B Business Solutions/  
Dennis & Lizette Aanenson

- Media Sponsors**  
ASGD Brand  
Strategy + Design  
Midco  
The HomeSlice Group

- Event Committee**  
Dan Ashmore  
Leslie Ashmore  
John Brewer  
Jan Brewer  
Jon Crane  
Gail Crane  
Diana Dufur-Day  
Bridget Gilbert  
Denny McKay  
DeMaris Nesheim  
Theresa Schreiner  
Abby Sharp  
Melissa Wood

# 26TH ANNUAL GALA AT MOUNT RUSHMORE

The 26th Annual Gala at Mount Rushmore was cancelled in 2020 due to COVID-19. Thanks to our generous donors and sponsors who stepped up to fill the gap.

**NET PROCEEDS: \$34,565**

## DESIGNATION:

Children's Home Child Advocacy Center Endowment

### Presented by

Rotary Club of Rapid City  
Rushmore  
Xanterra Travel Collection  
National Park Service at  
Mount Rushmore

### Titanium Sponsor

Janet Kahler

### Platinum Sponsors

Black Hills Energy  
Black Hills Oral Surgery &  
Dental Implant Center  
Monument Health

### Silver Sponsors

Sander Sanitation Service  
Hills Septic Service  
Dakotah Steakhouse

### Media Sponsors

ASGD Brand Strategy + Design  
Midco

### Entertainment Sponsors

Rotary Club of  
Rapid City Rushmore  
Big D

### Event Committee

Scott Van Dam, Chair  
Keith Cook  
Darla Crown  
Carmen Hansen  
Ron Jeffries  
Marty LaMontagne  
Bruce Nearhood  
Linda Peterson  
Theresa Schreiner  
Abby Sharp  
Lloyd Shelton  
Azure Summers  
George Twitero  
Shari West Twitero

### Contributing Event Partners

The 1880 Train, Hill City, SD  
Central States Fair,  
Rapid City, SD  
Jackson Pacific Inc,  
Wilsonville, OR  
Jon Crane Gallery & Framing,  
Hill City, SD  
Mark & Michelle Mordhorst  
Prairie Mountain Inc,  
Lockwood, MO  
Riddle's Jewelry,  
Rapid City, SD  
Rush Mountain Adventure  
Park, Keystone, SD  
Sioux Pottery, Rapid City, SD  
Sysco Foods, Rapid City, SD  
Dr. Scott & Helen Van Dam,  
Rapid City, SD  
Wheeler Manufacturing  
Company Inc, Lemon, SD  
Xanterra Travel Collection

## 32ND ANNUAL



Event Date:  
**JANUARY 22-23, 2021**

The Funkski event includes skiing, fat tire biking, snowboarding, team snow tubing, snow sculpting, zipfy sled racing and cross country skiing. It has become the premier outdoor winter event in eastern South Dakota. For 2021, it was scaled back but enjoyed just the same!

**NET PROCEEDS: \$38,104**

## DESIGNATION:

Children's Inn Program Support

### Title Sponsor

Media One

### Event Host

Great Bear Ski Valley

### Gold Sponsors

Get-N-Go  
Great Western Bank  
Pipestone

### Silver Sponsors

Dan Grider & Jennifer Josko  
Koch Hazard Architects  
Marsh & McLennan Agency  
Sanford Health  
Steve & Kathy Sanford

### Bronze Sponsors

Associated Consulting  
Engineering Inc.  
Cipher Imaging  
Grossenberg Implement  
SDN Communications  
Stockwell Engineers

### Friends of Funkski

Freeburg Hay Company  
Scheels  
Sisson Printing

### Media Partners

Dakota News Now  
Midco  
Results Radio

### Other Event & Media Support

Lamar Outdoor Advertising  
Sioux Falls Parks &  
Recreation

### Event Committee

Ben Blomberg  
Brad Blomberg  
Greg Blomberg  
Alexa Giebink  
Dan Grider  
Kevin King  
Staci Kropuenske  
Jill Lerdal  
Scott Maguire  
Jeff Morlan  
Jarrod Muller  
Brian Rotert  
Brooke Wegener

### Media One Staff

John Fiksdal  
Rebecca Goeden  
Eva Hofer  
Danielle Johnson  
Sharon Knoll  
Bryon Middleton  
Jessica Rice  
Molly Schenkel

31ST ANNUAL  
Rotary Club of Rapid City Rushmore

# GOLF TOURNAMENT

Event Date:  
JULY 27, 2020

NET PROCEEDS: \$61,489

DESIGNATION:  
Children's Home Child Advocacy  
Center Endowment

**Title Sponsor and Host**  
Rotary Club of Rapid City  
Rushmore

**Presenting Sponsor**  
Great Western Bank

**Diamond, Cart and Gift Sponsors**  
Assurant Solutions  
Black Hills Animal Hospital  
*(Diamond and Hole Sponsor)*  
Black Hills Shooters Supply  
Brazos Roofing  
Dean Kurtz Construction  
Dr. Stuart Fromm, MD/  
Black Hills Orthopedic  
& Spine Center  
Monument Health  
Sanford Health/  
Good Samaritan Society  
The UPS Store  
Vast Broadband

**Gold Sponsors**  
Black Hills Community Bank  
Black Hills Surgical Hospital  
Carver Insurance Inc./  
Dakotacare Administrative  
Services  
Dave Schmidt Agency/  
Farmers Insurance  
First Western Federal  
Savings Bank  
Granite Automotive  
Gustafson Builders/  
Heavy Constructors Inc.  
Ketel Thorstenson LLP

Kieffer Sanitation  
Lind-Exco Inc.  
Northwest Pipe Fittings Inc.  
Rotary Club of Rapid City  
Rushmore  
Sander Sanitation Service  
US Bank

**Hole Sponsors**  
Charles & Jill Arbeiter  
Black Hills Animal Hospital  
*(Diamond and Hole Sponsor)*  
Black Hills Federal  
Credit Union  
Black Hills Oral Surgery &  
Dental Implant Center—  
Dr. Jay A. Crossland  
Butler Machinery  
David & Kimberly Dolan  
Fisher Beverage  
H-S Precision  
Kieffer Family Dental  
KLJ Engineering  
Neugebauer's Jewelry,  
Design, & Service  
Pioneer Bank & Trust  
Rapid City Journal  
Rapid Foundation Repair  
Seacrest Wealth  
Management/Jeffrey A.  
Meyer & Robert Saylor  
Security First Bank  
Signal Securities Inc./  
Jon D. Johnson CIMA®,  
AAMS®, CMFC  
Unique Signs  
Valley Sweeping

**Rotary Golf Committee**  
Jeffrey A. Meyer, Chair  
Mark Barry  
Scott Barbour  
Darla Crown  
David Dolan  
Dr. Mike Fuller  
Seth Green  
Roger Heacock  
Ron Jeffries  
Jerome Johnson  
Jon D. Johnson  
Janet Kahler  
Marcia Law  
Doug Lind  
Bruce Nearhood  
Debra Niemi  
Mark Schreiner  
Theresa Schreiner  
Abby Sharp  
Tammy Stewart  
Derrick Stout  
Pat Sutliff  
Dr. Willis Sutliff  
Tyler Trevillyan  
Dr. George Twitero  
Shari West Twitero  
Bob Weyrich  
Marcia Whiting



Event Date:  
AUGUST 27, 2020  
The Golf Club at Red Rock, Rapid City

NET PROCEEDS: \$36,526

DESIGNATION:  
Children's Home Child Advocacy  
Center Endowment

**Title Sponsor & Host**  
Kieffer Sanitation

**Double Eagle Sponsor**  
Hills Septic Service

**Eagle Sponsors**  
Black Hills Rubble  
Management  
*(Eagle & Par Sponsor)*  
Buffalo Wild Wings/  
Z'mariks Noodle Café  
Fisher Beverage  
Ponderosa Screen  
Printing & Embroidery

**Birdie Sponsor**  
Waste Equipment-Toter

**Par Sponsors**  
Black Hills Energy  
Black Hills Rubble  
Management  
*(Eagle & Par Sponsor)*

Black Hills Sugar Shack  
Cambria Suites  
GenPro Energy Solutions  
Highmark Federal  
Credit Union  
Mountain Plains Insurance  
Pacific Steel & Recycling  
The Rushmore Hotel

**Media Sponsor**  
Gray Television/KEVN

**Event Committee**  
Seth Green, Chairperson  
Butch Hanssen  
Adam Meyer  
Jennifer Nielsen  
Dereck Parce  
Theresa Schreiner  
Abby Sharp  
Stacey Sharp  
Derrick Stout

3RD ANNUAL  
Social Movement Campaign

**DRIVE OUT**  
DOMESTIC VIOLENCE  
FUELED BY VERN EIDE MOTORCARS

Event Date:  
**JULY 2020**

More than 33% of South Dakota women will be victims of intimate partner violence in their lifetimes. Drive Out Domestic Violence is a social movement campaign designed to create awareness of domestic violence and generate funds to support victim services.

**NET PROCEEDS: \$62,229**

**DESIGNATION:**  
Children's Inn Program Support

**Title Sponsor**  
Vern Eide Motorcars

**Victory Lap Sponsor**  
Great Western Bank

**Pedal to the Metal Sponsors**

Harold & Helen Boer  
Dakota Electric  
Furniture Mart  
Pipestone  
Rosenbauer Firefighting Technology

**Pace Car Sponsors**  
Harold & Helen Boer  
Nordstrom's Automotive Inc.  
Pipestone  
Rosenbauer Firefighting Technology  
Sanford Health

**Pit Crew Sponsors**  
Harold & Helen Boer  
Culver's  
Modern Woodmen of America  
Catherine Piersol

**Media Partners**  
Dakota News Now  
Midco  
Results Radio  
VVI

**Other Event Support**  
Dakota Lettering  
Tom & Jean Nicholson

**Social Media Ambassadors**  
These volunteers helped reach a combined audience of more than 9 million followers on Facebook, Instagram, Twitter and LinkedIn.

**MORE PARTNER FUNDRAISERS**

(affiliated fundraising events)



Red Rock Bar & Grill, Partners & Friends Bike Nights and other fundraising .....	<b>More than \$29,500</b>
Those Guys ABATE Poker Run and Christmas Fund Gifts .....	<b>\$14,824</b>
Nyberg's Ace Little Red Stocking "Round Up" .....	<b>\$13,192</b>
Scooters Coffee – Day of Giving .....	<b>\$ 4,398</b>
Altar'd State – Mission Mondays .....	<b>\$ 3,158</b>
Tommy Jacks Pub – Raffles .....	<b>\$ 3,707</b>
Black Hills Wind & Fire Motorcycle Ride .....	<b>\$ 3,675</b>
Dyno Day For Kids .....	<b>\$ 3,300</b>
Hondas With Heart Car Show .....	<b>\$ 2,970</b>
Critters Restaurant & Bar Fundraiser .....	<b>\$ 2,106</b>
Hot Cocoa Hut for Children's Inn .....	<b>\$ 1,950</b>
The Barrell House Fundraiser .....	<b>\$ 1,392</b>
Hy-Vee Operation Helpful Smile for Children's Inn .....	<b>\$ 1,303</b>
Hy-Vee Operation Helpful Smile for CHS .....	<b>\$ 1,294</b>
HealthSource Chiropractic Fundraiser for Children's Inn .....	<b>\$ 1,100</b>

# CHS EVENTS IN 2021

## Cleaver's Chef Challenge

April 3, 2021 • Sioux Falls  
-----

## Kieffer Sanitation Trash Can Open

June 22, 2021 • 9:30 am

Golf Club at Red Rock

Theresa Schreiner: 605.343.2811  
-----

## Drive Out Domestic Violence Fueled by Vern Eide Motorcars

July 2021

Staci Kropuenske: 605.330.7387  
-----

## Those Guys ABATE Poker Run

July 18, 2021 • Sioux Falls

Dave Brende: 605.940.3535  
-----

## Rotary Club of Rapid City Rushmore Golf Tournament

July 26, 2021 • 10:00 am

Arrowhead Country Club

Theresa Schreiner: 605.343.2811  
-----

## Caring for the Kids Golf Classic

August 2, 2021 • Sioux Falls

Tom Roberts: 605.965.3138  
-----

## Caring for the Kids

August 3, 2021

6:30–7 pm Statewide Broadcast

Tom Roberts: 605.965.3138  
-----

## Black Hills Wind & Fire Motorcycle Run

Thursday, August 5, 2021

Rich Stanger: 303.818.1728  
-----

## Jon Crane CHS Benefit Auction

Friday, October 1, 2021 • 5:30 pm

Arrowhead Country Club

Original Live Auction Art/Silent Auction  
Packages

Theresa Schreiner: 605.343.2811  
-----

For more information,  
visit our website: [chssd.org/events](https://chssd.org/events)



# LEARN MORE ABOUT PARTNERING WITH CHS

Issue 103 | August 2019

### A Letter from Home

**Strength Training**

This is an email sent to staff by Sue Williams, the Program Director for Sioux Falls Children's Home. It sheds light on a key component of the CHS residential treatment philosophy.

In light of yet more senseless shootings in our nation, I want to highlight The Six Core Strengths we are trying to instill in children who have suffered trauma. These come from an amazing man—Bruce Perry, MD, PhD—who has dedicated his professional life to studying and treating children who have endured abuse, neglect, exploitation, abandonment, parental chemical dependency, family violence...and the list continues.

- Attachment
- Self-Regulation
- Affiliation
- Attunement
- Tolerance
- Respect

Dr. Perry says we can diminish violence if we focus on the following **CORE STRENGTHS** when working with children:

**Attachment:** The ability to make emotional connections to fellow human beings

**Self-Regulation:** The ability to think before acting

**Affiliation:** The ability to join in and belong to something

**Attunement:** The ability to think about fellow human beings

**Tolerance:** The ability to accept differences

**Respect:** The ability to value both self and others

It's likely each of us holds strong opinions about potential solutions to this problem. Working hard to

## SIGN UP FOR A LETTER FROM HOME:

Our monthly enewsletter includes heartwarming stories about the children and families we serve throughout our CHS programs.

Visit our website at [chssd.org](https://chssd.org) or call Kim Balk-Phelps at 605.965.3144.



## LIKE US ON FACEBOOK:

[facebook.com/CHSSD](https://facebook.com/CHSSD)

[facebook.com/ChildrensInnSD](https://facebook.com/ChildrensInnSD)



## WATCH CHS VIDEOS:

[chssd.org/about/news/archives](https://chssd.org/about/news/archives)



# GIFT FOR GOOD

## CHILDREN'S INN ENDOWMENT CAMPAIGN

As the population of the Sioux Falls area rises, the need for shelter and services for victims of domestic violence and child abuse also increases. And statistics show that approximately one in three women in South Dakota will experience domestic violence in her lifetime.

Children's Inn is the only domestic violence shelter in Sioux Falls. We serve all of Minnehaha and Lincoln counties—a population close to 300,000—along with McCook, Turner and Union counties. The current facility, built in 1991, has a 40-bed capacity. However Children's Inn has been at or above capacity during most of the last six years.

Following a feasibility study, due diligence and consideration of all options, CHS is moving forward to build a new Children's Inn facility on East 10th Street, adjacent to the old School for the Deaf (now Empower campus), with groundbreaking on May 4, 2021.

### Please Join Us

Children's Inn provides essential shelter and care for vulnerable people in our community. Your compassion, care and visionary thinking will help shape their future, and help safeguard our community's quality of life for generations to come.

To be part of this effort, please visit [giftforgoodsd.org](http://giftforgoodsd.org) or contact Rick Weber at 605-965-3127 or [Rick.Weber@chssd.org](mailto:Rick.Weber@chssd.org).

# THANK YOU!



CHILDREN'S  
HOME  
SOCIETY

This report honors and recognizes the many friends of Children's Home Society.  
Our intention is to be inclusive and accurate.

### Report any corrections to:

**Kim Balk-Phelps** | PO Box 1749 | Sioux Falls, SD 57101-1749 | email: [kim.balk-phelps@chssd.org](mailto:kim.balk-phelps@chssd.org) | 605.965.3144

As a matter of good stewardship, we try to keep the size and cost of this publication to a minimum.  
There is a very lengthy list of \$1–\$99 gifts that are not printed. Please know we are just as grateful for the generosity of our unlisted friends!

### Privacy Policy:

To protect the privacy of the children and families we serve, it is our practice (unless otherwise noted) to use names and photos that represent our stories and ensure confidentiality.