



HOPE

heals
TRAUMA



**Children's
Home
Society**

OF SOUTH DAKOTA

2026 ANNUAL REPORT



OUR MISSION

To prevent, treat and heal trauma.

OUR VISION

A world that stands up to trauma where all people are safe, healthy and resilient.

OUR VALUES



We are better together.



We choose kindness.



We are tenacious.

STAY IN TOUCH

Please add Children's Home Society and Children's Home Shelter for Family Safety as friends on your social media accounts. And feel free to comment, like and share!



FACEBOOK:

facebook.com/CHSSD
facebook.com/CHSSShelterforFamilySafety



INSTAGRAM:

instagram.com/chssdorg



LINKEDIN:

Children's Home Society of South Dakota
Children's Home Shelter for Family Safety

Hope Heals Trauma

Welcome to our 2026 Annual Report! Within these pages you will learn how Children's Home Society (CHS) scatters seeds of hope across the region.

- **Our Rapid City Campus is partially complete, on time and on budget!**
- **Rhianna left Black Hills Children's Home in 2020 and went on to graduate from high school in 2025. Her parents called her transformation "a miracle."**
- **At Shelter for Family Safety in Sioux Falls, Parenting Coordinator Angela Hyde teaches Common Sense Parenting for parents of all ages.**
- **In our story about Wendy's Wonderful Kids Adoption Services, you'll meet the Carlsons of Presho, SD, who adopted three brothers and have wrapped them in care and love.**
- **Dorla and her infant daughter were Bright Start clients in 2014. Today her daughter is 11 and they are both thriving.**
- **You'll learn about a highly in-demand volunteer, Greg Harrell, who has mentored kiddos at Sioux Falls Children's Home for nine years.**
- **And we'll introduce you to donor Sheryl Nelson of the toy store, Kidtopia, who provided birthday gifts for the children we serve—for 18 years!**

Each story illustrates how we fulfill our mission to prevent, treat and heal trauma. And common to each is that hope is part of that healing. Science of Hope research proves that hope is one of the strongest predictors of well-being for children, adults and families.

Our definition of hope includes setting goals, identifying pathways to reach those goals and nurturing the willpower to pursue them. Hope is also directly associated with high self-esteem, empowerment and achievement.

We invite you to learn more about CHS and become involved in our mission as an employee, volunteer, donor or friend.



MICHELLE LAVALLEE

PRESIDENT AND
CHIEF EXECUTIVE OFFICER
CHILDREN'S HOME SOCIETY





A NEW HOME FOR HOPE

Rapid City Campus Update

Spirits are high and hope is growing at the Rapid City Campus of Children's Home Society (CHS) as progress is now visible.

"By late fall 2026, our new Rapid City Campus will be complete," said President and CEO Michelle Lavallee. "The concentration of trauma-informed experts and services in a single location ushers in a new era of care for children and families in the Black Hills."

Renovation of the former 106,000-square-foot National American University site on Mount Rushmore Road began in 2025.

> CONTINUES ON PAGE 4

During early 2026, we finished the Children's Home Child Advocacy Center (CAC) offices and Outpatient Mental Health Services (OMHS) clinic (area D shown on p. 3). Staff moved into their renovated offices in late January.

"We're thankful to have moved into our permanent offices," said Chief Medical Officer Dr. Brian Wilson.
"Our OMHS clinic, as well as the entire facility, has been designed to provide an environment that feels safe and comfortable for children and their families who are dealing with trauma, while also supporting the CHS staff who are caring for those individuals."

CAC offices are specially designed and equipped for the functionality required for legally admissible forensic interviewing. Space is also provided for multi-disciplinary partners of CAC, who represent law enforcement, criminal justice, medical providers, child protection and more.



Chief Medical Officer Dr. Brian Wilson in his newly renovated office on the Rapid City Campus of CHS. The Outpatient Mental Health Services and Child Advocacy Center areas are complete.

A Project of Significance

The CHS Board of Directors voted to purchase the National American University site for renovation and development in 2024. It was clear that the project was significant in terms of the budget needed. But the significance of the new facility for the children and families in the Black Hills, and the community, was even greater.

"We are proud to report that the Rapid City Campus project is on track and under budget," said Chief Administrative Officer Mark Niemeyer. "The final building product is a result of input from staff, clients, programs, departments, partner agencies, community leaders, contractor partners and donors. The facility will serve the CHS mission now and well into the future."

| | |
|--------------------------|-----------------------|
| Overall budget: | \$51 million |
| Renovation/construction: | \$33 million |
| Cost of NAU site: | \$8.6 million |
| Additional land: | \$2.8 million |
| Rockerville sale: | \$6.2 million |
| Messengers sale: | \$1.3 million |
| Scheduled completion: | Late fall 2026 |





Children's Home Child Advocacy Center staff gather in their new waiting room, with furniture arranged in a circle for warmth and comfort.

Second Phase has Begun

Construction is now underway on the spaces that will house Residential Treatment (area C) plus Owen School and the Foundation offices (areas A/B).

The completed area will include 32 psychiatric residential treatment beds for children ages 4-14. Residential treatment staff provide 24-hour care for children who have experienced abuse, trauma, or emotional and behavioral challenges. This includes individualized treatment planning, on-site education, individual, family and group therapy, psychiatric care and support to help children build skills for life beyond treatment.

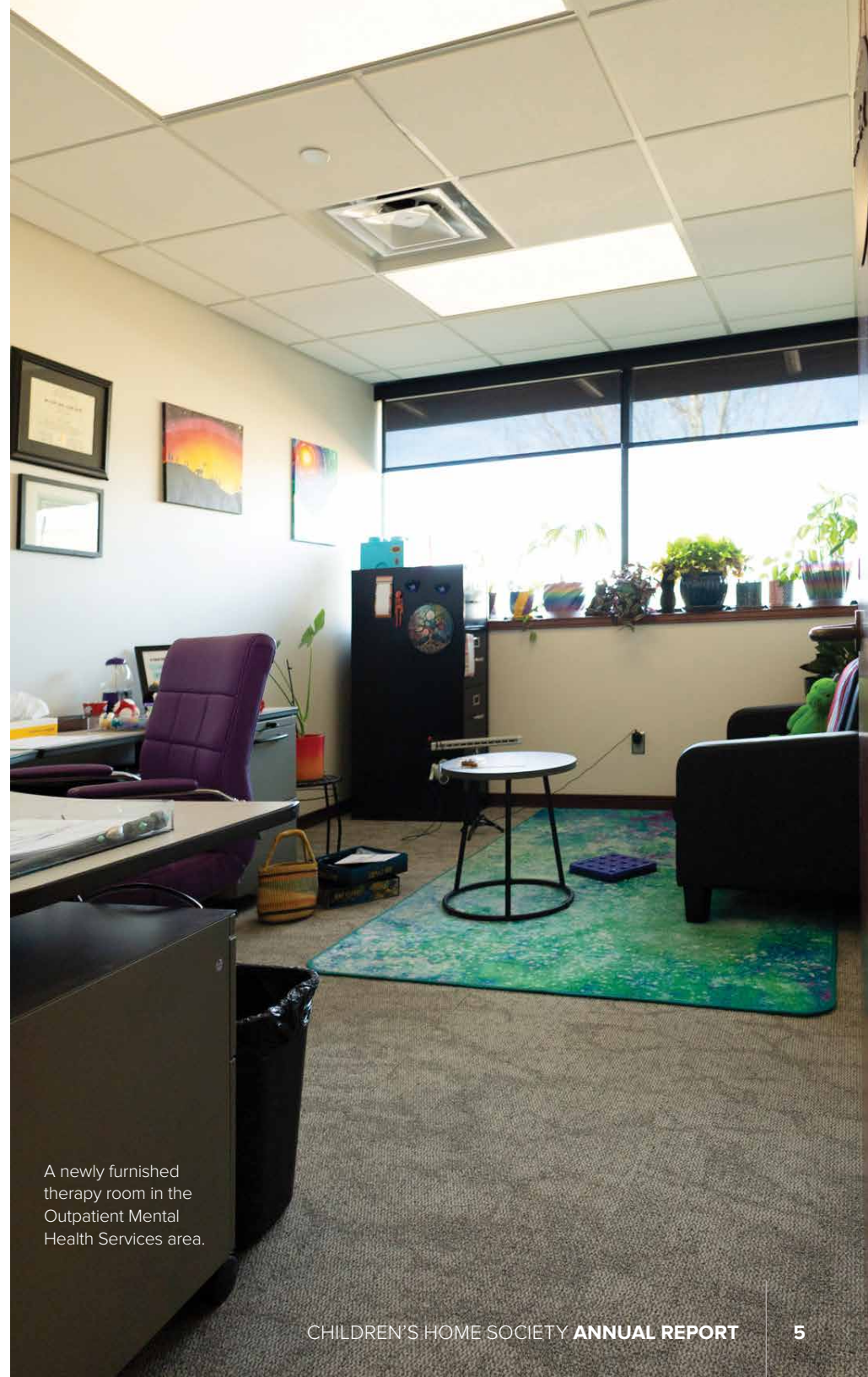
Owen School will serve the children in residential care along with 64 spots for day school students from communities

across the Black Hills. CHS Department of Education-approved schools offer early intervention and least-restrictive placements to support students whose behavioral challenges significantly impact classroom safety and learning environments.

The Residential Care and Owen School area will include a library, art and music rooms, sensory rooms, gym and recreational facilities, a full commercial kitchen and dining hall, offices, meeting rooms and more.

When renovations are complete in late 2026, all CHS programs and services in Rapid City will operate under one roof, creating a more accessible environment for families, staff, visiting care providers and resulting in a stronger continuum of care.

> CONTINUES ON PAGE 6



A newly furnished therapy room in the Outpatient Mental Health Services area.

Generous Donations

CHS is grateful for receiving several major gifts designated for the Rapid City Campus.

The Seed for Success Foundation has pledged \$5 million to support and name the OMHS clinics at the Rapid City Campus and the Sioux Falls Campus.

“Seed for Success is helping us turn hope into action,” said Chief Philanthropy Officer Jon Mammenga. “Their support allows us to reach more children and families who have experienced trauma and provide the care they need to heal.”

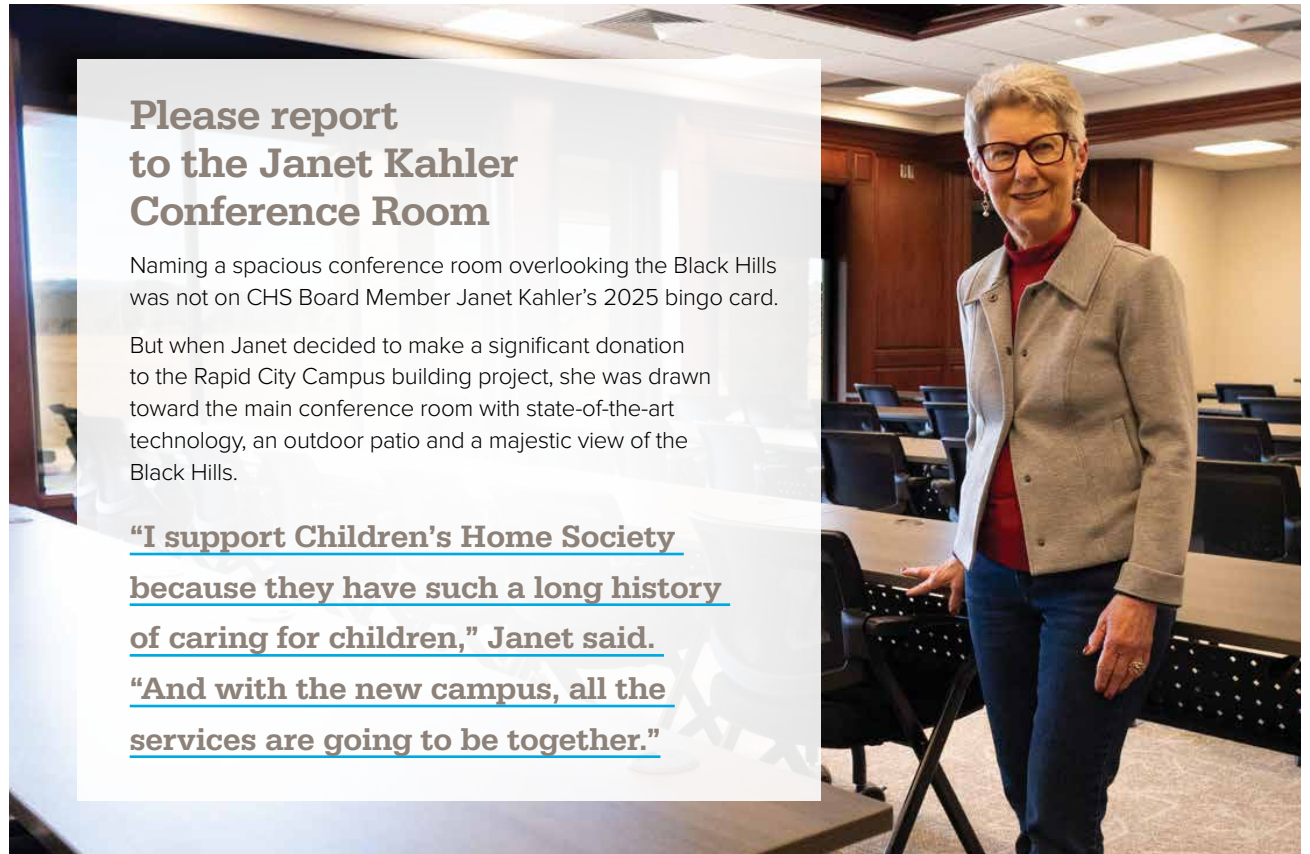
Marianne Von Seggern, Vice President at Seed for Success Foundation, said she hopes the gift will lead to lasting, positive outcomes for children and families throughout the state.

“At Seed for Success, our goal is to build connections, support families, strengthen communities and provide opportunities for the next generation to thrive,” she said.

Another important gift of \$2 million for CHS’s Residential Treatment program in Rapid City came from Sanford Health.

“Support like this makes it possible to provide services to kids who need hope and healing,” said Jon. “We are deeply grateful for Sanford Health and their belief in our mission of preventing, treating and healing trauma.”

Sanford Health President and CEO Bill Gassen said the gift builds on the long-standing history of support for CHS and strengthens services for children in the years ahead.



Please report to the Janet Kahler Conference Room

Naming a spacious conference room overlooking the Black Hills was not on CHS Board Member Janet Kahler’s 2025 bingo card.

But when Janet decided to make a significant donation to the Rapid City Campus building project, she was drawn toward the main conference room with state-of-the-art technology, an outdoor patio and a majestic view of the Black Hills.

“I support Children’s Home Society because they have such a long history of caring for children,” Janet said. “And with the new campus, all the services are going to be together.”

“Children’s Home Society of South Dakota holds a special place in our hearts at Sanford Health,” said Bill. “Our benefactor, Denny Sanford, has given graciously to CHS for decades, and his gifts have inspired Sanford Health to follow his lead. We see the impact philanthropy has made on the children and adults who need the valuable resources CHS provides, and we want to help ensure family members in the Black Hills region continue to receive this support for decades to come.”

The CHS Residential Treatment facility is currently in Rockerville, which is outside of Rapid City. In 2025,

it was sold but will not be vacated until construction at the Mount Rushmore Road building is complete in November. Dr. Cleveland Trimble, who purchased the site, is generously returning CHS lease payments as donations.

“We couldn’t be more delighted with not just the progress at the Rapid City Campus, but the community’s reception and our staff and clients’ reaction,” concluded Michelle. “Everyone at CHS looks forward to helping children and families through hope and healing.”

Hello, friends and supporters of Children's Home Society!

At Children's Home Society, hope continues to serve as our North Star. Hope is more than a feeling—it is grounded in action and the pursuit of meaningful goals. When we follow pathways to hope, we know they lead to healing. Simply put, hope helps heal trauma.

This philosophy guides everything we do as an organization. From the renovation of our new campus in Rapid City and other capital improvements to the way we deliver services to children and families, hope remains at the center of our work.

Since our founding in 1893, philanthropy has played a vital role in creating hope for those we serve. Your generosity allows our dedicated staff to turn hope into action every day. We are deeply grateful for your support and humbled by the compassion of those who believe in our mission.

Each year, charitable giving plays a critical role in sustaining our work. This year, 21% of our operating budget is made possible through philanthropy. Your continued support empowers us to fulfill our mission of preventing, treating and healing trauma.

HOPE

Every gift—regardless of size—makes a meaningful difference. Together, we celebrate the impact of your generosity as it advances our vision of a world that stands up to trauma, where all people are safe, healthy and resilient.

To our board members, volunteers, advocates and donors: thank you. Your passion is inspiring, and your impact is profound. With your continued partnership, hope will keep guiding our work and bringing healing to those who need it most.



JON MAMMENGA

CHIEF PHILANTHROPY OFFICER,
CHILDREN'S HOME FOUNDATION

CHS EVENTS IN 2026

RAPID CITY

Legacy of Hope Gala

Saturday, March 14
Hyatt Place Rapid City
Theresa Schreiner – 605.393.4297

13th Annual Kieffer Sanitation Trash Can Open

Thursday, June 11
Golf Club at Red Rock
Abby Sharp – 605.393.4298

37th Annual Rotary Club of Rapid City Rushmore Golf Tournament

Monday, July 27
Arrowhead Country Club
Theresa Schreiner – 605.393.4297

Jon Crane CHS Benefit Auction

Friday, October 2
Arrowhead Country Club
Theresa Schreiner – 605.393.4297

SIOUX FALLS

Drive Out Domestic Violence – Fueled by Vern Eide Motorcars

July 2026
Ashley Neeley – 605.330.7389

Caring For The Kids Celebration

Tuesday, August 4
Sioux Falls Convention Center
Jennifer Sigette – 605.965.3125

Gift Wrap Booth

December 2026
Empire Mall
Ashley Neeley – 605.330.7389

Dear Friends,

Spring is my favorite season. Once we feel the warmth of the sun, see green shoots poking up through the dirt and hear birds singing cheerfully in the morning, there's a collective sigh of relief and a growing sense of possibility and hope.

Children's Home Society (CHS) helps instill that feeling of possibility and hope year-round in the people we serve. Every day, we help our clients set goals, discover pathways and develop the conviction that they can succeed. We help them identify and regulate their emotions, learn to trust safe people and power up the light inside them so it can begin to shine.

I am very proud of the work CHS does, and of the infrastructure that supports that work. Providing high-quality services to nearly 16,000 people across the state each year is a complex endeavor. A wide spectrum of behind-the-scenes operations includes everything from meeting federal regulations to balancing the budget to doing hundreds of loads of laundry each week. Our staff of close to 400 people is truly exceptional.

On top of our extraordinary day-to-day work of changing lives, we have been renovating the new Rapid City Campus.

Each time I visit the building and see the progress, I am filled with hope.

Because of this project, we will soon be able to serve more children and families throughout the Black Hills in a beautiful, trauma-informed setting. And we couldn't do it without you—our friends and donors.

Thank you for supporting South Dakota's most dynamic and hope-filled nonprofit organization.

AMY KOENIG
CHAIR,
CHILDREN'S HOME SOCIETY
BOARD OF DIRECTORS

CHILDREN'S HOME SOCIETY
Board of Directors 2025-2026



Amy Koenig
Rapid City
CHAIR



Matt Benne
Rapid City
VICE CHAIR



Jack Marsh
Sioux Falls
IMMEDIATE PAST CHAIR



Sally Anderson*
Mesquite, TX



Mike Albertson
Rapid City



Teresa Cauwels
Sioux Falls



Tim Dougherty
Sioux Falls



Heath Ducheneaux
Kyle



Steve Flanery
Rapid City



Lafawn Janis
Rapid City



Justine Jenshus
Rapid City



Melissa Johnson
Sioux Falls



Bart Miles
Sioux Falls



John Nooney
Rapid City



John Rozell
Sioux Falls



Greg Schweiss
Rapid City



Chirag Shukla
Sioux Falls



Deb Sohlt
Sioux Falls



Carolyn Stavenger
Sioux Falls



Kehala Two Bulls
Rapid City



Embrace life with the soul of a dandelion;
unyielding and ever hopeful.



*Sally Anderson is an honorary member, and the great-great-granddaughter of Children's Home Society co-founder Elizabeth Sherrard.

CHILDREN'S HOME FOUNDATION
Board of Directors 2025-2026



Eric Lee
Rapid City
PRESIDENT



Marty DesLauriers
Sioux Falls
VICE PRESIDENT



Bob Baker
Sioux Falls
IMMEDIATE PAST PRESIDENT



Janet Kahler
Rapid City
TREASURER



Diana Dufur-Day
Hill City
SECRETARY



Dennis Aanenson
Sioux Falls



Kim Burma
Sioux Falls



Justin Cutler
Hill City



Joel Engel
Sioux Falls



Gina Hopkins
Sioux Falls



Marty Jackley
Pierre



Bill Lindquist
Sioux Falls



Ben Marcello
Sioux Falls



Jeffrey Meyer
Rapid City



Val Mickelson
Sioux Falls



Dustin Morrison
Rapid City



Molly Peterson
Brandon



Bobby Sundby
Rapid City



Paul Thorstenson
Rapid City

Directors Emeritus: Board members who attain Director Emeritus status have met all three of the following requirements:

- served six or more years as a CHS Board Member
- served six or more years as a CHF Board Member
- served as President of either Board

DIRECTORS EMERITUS

Julie Anderson Friesen*
Lynne Byrne
John Brewer
Gary Brown
Jeb Clarkson
Steve Egger
Tim Hamel
Blake Hoffman
Bob Hoover
Gary Jensen
Tim Meyer
Linda Mickelson Graham

Rob Mudge
T.J. Reardon
George Roberts
John Rozell*
Dave Schmidt
Peg Seljeskog
Scott Sletten
Carolynn Stavenger*
Pam Taylor Jansa
Gene Uher
Marilyn Van Demark
Meg Warder

*Current Board Member

Dear Friends,

When I joined the Children's Home Foundation Board of Directors, I was thoroughly impressed by the care being provided.

I saw that Residential Treatment helped children overcome steep odds to succeed. I learned how the Child Advocacy Center encouraged abused kiddos to bravely share their experiences. I found out how Intensive Case Management connected desperate families with the resources they needed. I came to understand how hope—along with love, trust and growth—heals trauma.

The work we do is moving and inspiring. And as I became more engaged with Children's Home Society (CHS), I began to realize the tremendous value of the organization to our communities in South Dakota. To my mind, there is nothing more essential and urgent than ensuring the long-term viability of CHS.

How will CHS remain fiscally and operationally strong for years—and generations—to come? It's up to us. The people of South Dakota must continue to step up, as leaders, employees, volunteers, donors and friends.

The Rapid City Campus project demonstrates CHS's commitment to investing in underserved communities for the long haul. I urge everyone reading this to become involved with CHS in some capacity. Whether you're leading a fundraising campaign, mentoring a child or stuffing envelopes, you are supporting the wellbeing of our community, now and for years to come.

Thank you for everything you do.

ERIC LEE
PRESIDENT,
CHILDREN'S HOME
FOUNDATION
BOARD OF DIRECTORS



After leaving Black Hills Children's Home in 2020, Rhianna Besler of Spearfish has gone on to graduate from high school and enjoy a full life, which her parents weren't sure would ever happen.

LASTING HOPE AND HEALING

The Beslers were almost out of hope.

Angie and Casey were desperate to help their daughter, Rhianna.

"She suffered from severe fear, anxiety and depression," said Angie. "She was running away from school, just uncontrollable, and medications weren't working, counseling wasn't working."

"It just got to the point where there was nothing we could do to help her. We were afraid we were going to lose her."

The Spearfish School District told the family about Residential Treatment at Children's Home Society (CHS) and helped get Rhianna admitted.

Rhianna was 12 when she arrived at CHS. "The reason for her coming was suicidal ideation,

anxiety and major depression, along with intellectual disabilities and impulsive behavior," said Black Hills Children's Home (BHCH) Therapist Rachel Walton.

"In her time here, it was discovered that her thyroid wasn't working properly," said Rachel. Rhianna received treatment for that condition along with appropriate medication, which helped jumpstart her journey to healthy behavior.

"It was a miracle," said Angie, "and it makes me want to cry. They do wonderful things with the kids there."

The healing begins

“To this day, we don’t know what Rachel did to get through to Rhianna, but she’s still using those coping skills now,” said Angie.

Rhianna isn’t the only client who has made breakthroughs with Rachel. Although she clearly has the secret sauce, she’s not sure what it is.

“If I had to break it down...something I do with all my kids that are cognitively able to manage it, is honesty,” said Rachel. “There were some pretty honest discussions with Rhianna about negative thoughts and what that leads to. And then her faith played a part. That was something I could use in therapy to help her.”

Rhianna’s social anxiety and lack of social skills meant she was unwilling to even try to connect with others.



BHCH Therapist Rachel Walton (left) with Rhianna and Rachel’s sister, Christine Walton, at Rhianna’s high school graduation party.

“We would practice; we would role play. And then we’d go practice with staff here. Just guiding her through how to engage in those interactions,” Rachel said.

Another important piece was Rhianna’s family. “Having supportive adults that are on the same page really matters,” said Rachel.

A lasting transformation

Discharged in 2020, Rhianna continues to thrive, and now shares her fun, unique personality with others.

“She’s fantastic now,” said Angie. “She has a sense of humor, she laughs, she doesn’t take things so seriously.”

What’s more, Rhianna walked in her high school’s graduation last year. “She has done things that we never thought she would do,” Angie said. “She went to prom last year. She sits with her peers at homecoming and at every football game. In the past, she would just be as far away from other people as possible.”

Angie said that Rhianna has good memories of BHCH. “She invited Rachel and a couple of the other unit leaders to her graduation party and they came. And her face just lit up when she walked outside and saw them coming up the driveway.”

Rachel was delighted to be at the graduation party as well. “When kids leave and use things we’ve tried to teach them—it’s validation that we are doing it right. And it makes me extremely proud.”



Rhianna showing her personality in a cow costume at Halloween and ready for prom.





Parenting Coordinator
Angela Hyde teaches free
Common Sense Parenting
classes at Shelter for Family
Safety, using a proven,
evidence-based curriculum.

COMMON SENSE PARENTING AT SHELTER FOR FAMILY SAFETY

Seven men and women sit around a U-shaped table in a conference room at Shelter for Family Safety in Sioux Falls.

They're here for a Common Sense Parenting course, offered free through the South Dakota Department of Social Services. Students range in age from early 20s to 50s.

Most participants have been court-ordered to attend the class, because of divorce or involvement with Child Protection Services. But they're not angry or indignant about being there. To the contrary—they are interested, engaged and report that they are learning helpful skills.

The class is open to anyone who wants to learn more about parenting.

Parenting has changed

Parenting Coordinator Angela Hyde teaches the Common Sense Parenting course.

“Parenting is very different than it used to be,” she said. “And parents, grandparents, anyone who is helping littles or teenagers needs different skills now than they used to.”

“What I tell our parents is that we used to parent based on morality. That was the old way of parenting. ‘Do this because I told you to,’ that kind of thing.”

“And now, we’ve learned more about how the brain works and how child development happens,” Angela said. “So, we want to parent based on how our children’s brains develop. For example, we can’t expect a two-year-old to practice impulse control, because their brains aren’t capable of that.”

“We need to shift our thinking,” she said. “Parenting is not punishment, it’s not power, it’s not control. Parenting is teaching.”

What are we teaching?

“Part of that,” Angela explained, “is teaching our kids that all emotions are okay. Kids are born with all the emotions, and they’re born with the capability of having emotions, but they’re not born knowing what those emotions are or how to handle them.”

“It’s our job as leaders in our families to teach our kids what emotions are and how to functionally handle those emotions,” she said. “Because a four-year-old that’s angry and upset doesn’t know that it’s anger that they’re feeling. So, it’s up to us to teach them, ‘oh, you look like you’re really angry. It’s all right to be angry. But you know what, it’s not okay to hit Mommy when you’re angry.’”

“It’s about teaching and then replacing the behavior that isn’t okay with behavior that is acceptable. Instead of just saying, ‘No, don’t do that!’”

This class session is about learning how parents can teach children self-control. It builds on the previous week’s lesson about staying calm. It’s immediately clear that a parent

can’t teach a child how to stay calm or maintain self-control without doing it themselves.

One 44-year-old man in the class says, “I was already using a lot of these techniques but by taking the class I’m learning more.” He liked the idea of creating a contract for teenagers, which they help write, so the household rules are clear and mutually agreed-upon.

Another student, a woman in her early 30s with five children, says she likes the class and benefits from the information provided. The interaction in class makes it more powerful than a parenting class she took 10 years ago, and she’s getting more out of it, as well.

Do as I do

We learn parenting primarily from our own parents. And it’s not always healthy. The good news is that parents and children can learn new ways to interact.

“I always tell parents, this is going to help you teach your child how to be a decent human being without yelling and screaming and hitting,” said Angela.

“We talk to the parents about how they are the ones with the fully formed brains,” she said, “so they are the ones that are responsible for setting the tone in their household.”

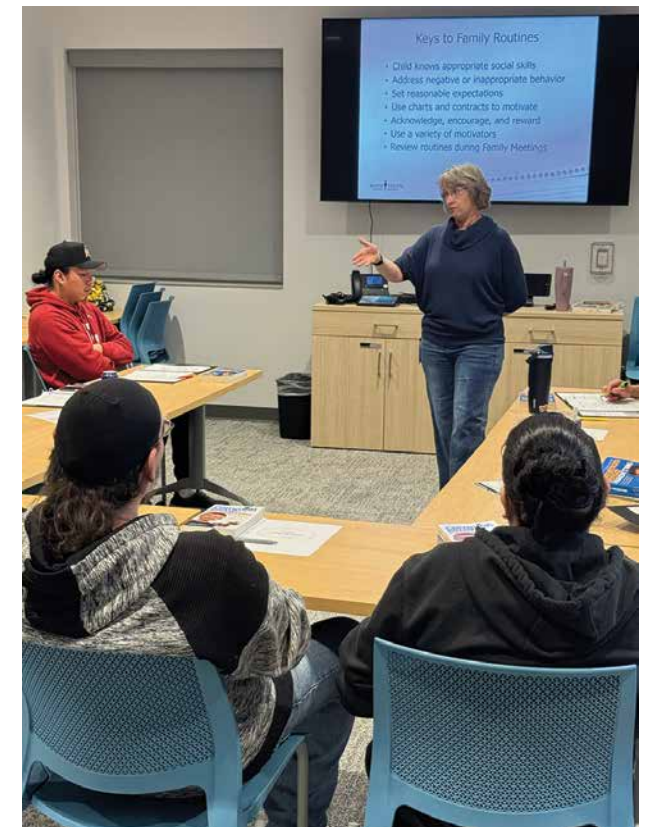
The class is based on common sense, just as the name states. But what happens when the parents are struggling with understanding their own emotions and responses?

Angela said, “First and foremost, I highly recommend that parents seek help to deal with their own issues. If they don’t, they will pass it on to their children.”

“Parents are the key to all of this,” she said. “If they aren’t able to control their emotions or know even what they’re feeling, they need to figure that out. And if they can’t, it’s going to be really, really hard to teach their children that because children learn by watching and observing.”

“We talk a lot about brain science and how you have an emotional brain and you have a thinking brain. And when you’re upset, you get out of your thinking brain and you’re functioning out of your emotional brain,” Angela explained. “In this class, parents learn how to calm themselves down so they can teach their kids to calm down.”

This is called co-regulation. It’s defined as “the interactive process where a calm, regulated person (usually an adult) helps another person (often a child or distressed individual) manage their emotions, stress and behavior through a secure relationship, supportive techniques and environmental structure.”



Angela’s classes give parents the tools to build healthy, positive relationships with their children.

Different ages, different behaviors

“We want to really try to teach our kids that all emotions are okay, how to handle those emotions and how to sit with those emotions,” said Angela. The Anger Thermometer provides options to help adults and children cope with their emotions.

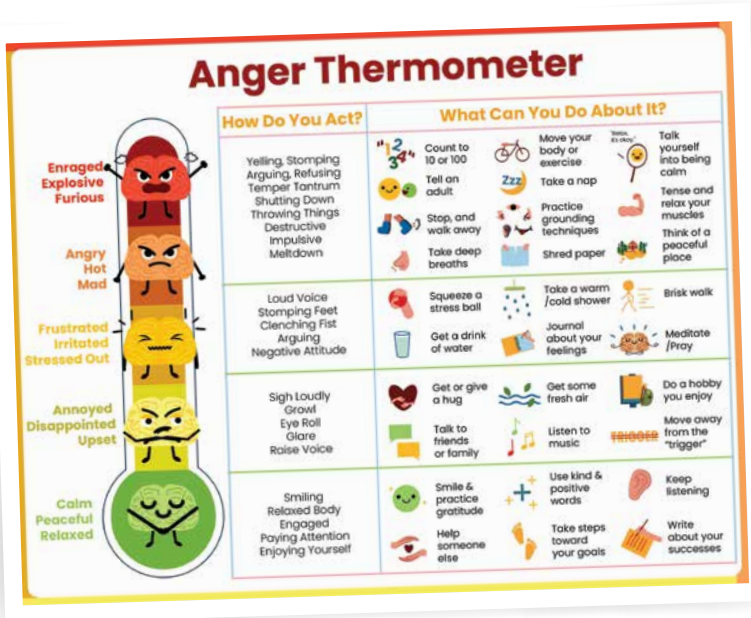


Photo credit: Mental Health Center Kids
www.mentalhealthcenterkids.com

It is the responsibility of parents to help their children learn how to recognize and handle their emotions.

Angela said, “One of the things that I say, that really helps parents understand, is that your child’s behaviors are just symptoms of an emotion your child doesn’t know how to handle, or a skill they don’t know yet.”

“Instead of getting angry with them, get curious and say, ‘okay, what is going on?’” said Angela. “What skill does my child need to know to handle this situation? Or is there an emotion my child does not know how to handle? What can I teach them to help them deal with this better?”

“Just changing that mindset really helps parents take it less personally,” she said.

The course also discusses how dysregulation looks different at various ages.

“When a toddler flips their lid, they’re crying and screaming and that kind of thing. When a teenager or pre-teen flips their lid, that could look like, ‘I hate you Mom,’ or ‘screw you, Mom,’ or eye rolls, or slamming the door,” said Angela.

“So it’s trying to remind yourself not to take that personally. Get curious about it and think, ‘okay, what’s happening that my child is having such a hard time?’”

“I’m absolutely not saying that the child should run the household,” Angela said.

“Children need us to be the leader. They need a strong, sturdy leader. They need someone to say, ‘I can see you’re having a hard time. I’m here, I won’t leave you, let’s figure this out together.’”

“And older kids need that accountability piece too. When everyone is calm, the parent can come back and say, ‘You got really upset, didn’t you? Well, because you got really upset and said mean words to me, you have a negative consequence for it.’”

Angela teaches parents in her class about ‘kid reasons,’ which help children understand why they need to do something—in a way that matters to them.

Kid reasons are reasons kids care about—what’s in it for them? If you tell a child to pick up their toys because the clutter is driving you crazy, it doesn’t mean that much. But if you say that if you pick up your toys quickly, you’ll have time to watch your favorite show before bedtime, that’s a kid reason. “It’s a really good way to motivate kids,” said Angela.

Common Sense Parenting is an evidence-based parenting program, backed by 30 years of research and is proven effective. It works well across ages, cultures and gender. That’s why the state uses the program.

Students in the class at Shelter use Common Sense Parenting books appropriate for their children’s ages, along with workbooks.

“We talk a lot about culture,” Angela explained, “why it’s important to have your kids know their culture and understand where they came from and have pride in where they came from.”

The class also helps parents learn to teach their children to have a positive mindset. “That’s a skill we need in today’s world,” she said.

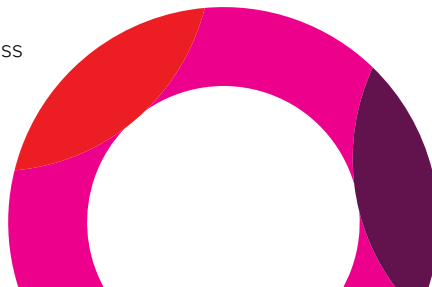
“Most of the parents in our classes, have never learned any of these skills,” she said. “And that’s no fault of their own and that’s no fault of their parents. If you’ve never learned something, how are you supposed to know how to do it?”

“As parents, we all are trying the best we can and it’s hard. It’s really hard to be a parent. And I tell our parents that if you are doing parenting right, it’s hard.”



Common Sense Parenting courses are held at Shelter for Family Safety and virtually throughout the year.

To learn more about Common Sense Parenting, visit <https://chssd.org/shelter/prevention-and-education> or email Angela Hyde at angela.hyde@chssd.org.



DOORS AND HEARTS OPEN WIDE

Meet Thomas and Britni Carlson of Presho, SD. Thomas is the pastor of Grace Methodist Church in Presho, and Britni teaches special education in the Lyman County School District. They became parents in 2025. By 2026, they had four children and two foster children!

“Having biological children was not going to happen for us,” says Thomas.

“But also, not having children was not an option for us,” says Britni.

“We said, ‘wherever God closes one door, He will open another;’” Thomas adds. “We knew eventually we would have children. We just didn’t think it would happen as fast as it did.”

> CONTINUES ON PAGES 16-17



With help from CHS’s Wendy’s Wonderful Kids program, Britni and Thomas Carlson adopted three siblings.

The door opens

Tina Graber is a Wendy's Wonderful Kids (WWK) Adoption Specialist at Children's Home Society (CHS). WWK is a program of the Dave Thomas Foundation for Adoption dedicated to promoting adoption for children who are lingering in the foster care system.

"I got a referral for a sibling group of three boys," says Tina.

"Clayton was in residential care at CHS. The oldest, Louis, had been at CHS in residential care, but several months prior had transitioned into a foster family that was supposed to be pre-adoptive. I got involved when the pre-adoptive family backed out."

"The best practice is to keep siblings together whenever possible. They had been living apart, so I was hoping to find a family that could take

all three of them and be able to provide the extra support the boys needed due to trauma." It's often very difficult to find adoptive homes for sibling groups, especially if there are higher levels of needs.

Meanwhile, back in Presho, the Carlsons were serving as therapeutic foster care providers through Capital Area Counseling in Pierre. A caseworker from the Department of Social Services asked if they would take Louis and Rhyder, two brothers, and possibly a third brother, Clayton, in a few months.

"The caseworker said she had found a treatment-level foster home," Tina says. "They had a lot of extra support through their foster care agency. They had a case manager and a therapist that were coming into the home."



Thomas and Britni Carlson of Presho, SD, with Rhyder, Clayton and Louis on Adoption Day. Also shown here are family, friends and professionals, including CHS staff members.

Hearts open wide

Britni says, "In March of 2024, we decided that we would do some respite care for Louis and Rhyder over the weekend." The Carlsons got to know the brothers through respite care over several weekends.

Two weeks later, after school was out, they moved to our home," says Britni. When Clayton was discharged from Sioux Falls Children's Home, he joined them. "And then we were selected as their adoptive family in September of 2024," she adds.

"The caseworker and I had regular contact with the family," says Tina. "We did monthly visits, met with their in-home therapist and did a lot of work helping the family learn how to meet these boys' unique needs."

"They had a lot of skills already and understood the effects of trauma on the boys' behavior," Tina explains. "That's really important when you're working with kids who come from

hard backgrounds. We had a lot of conversations talking through certain behaviors and handling emotions, and how to continue improving."

Thomas says that adopted children may come with baggage, but that they're very much worth the struggle. "You have to push through some of the hurdles to win the race," he says. "One of the things for us was realizing that all of us are broken at some point. For me personally, my father passed away when I was 13, and I found him in a coma on our living room floor."

"I had PTSD. But God didn't waste that pain because now when I sit with my children who have problems, we can share our hurt and pain, and work together to heal."

The adoption was finalized in April of 2025; in February of 2026, the Carlsons adopted another boy, Johnny, and they continue to provide therapeutic foster care.

Connecting to culture and community

“The other thing that makes our boys, Louis, Clayton and Rhyder unique is they’re enrolled with the Lower Brule Sioux Tribe,” says Thomas. “And their biological cousins go to school with them. We have a relationship with those families.”

“That’s a huge part of our story. We don’t take kids away from their family. We want them to stay as connected as possible, not only to their family, but to their culture.”

The Carlsons provide those connections through music, stories and language—and community. Thomas is a chaplain for Lower Brule and Crow Creek law enforcement and first responders, and has many friendships with Tribal people. The family keeps their boys connected to their spiritual traditions as well.

“All four of our kids who have been adopted have gotten star quilts,” explains Thomas. “At court we wrap them in star quilts and we pray over them.”

“It’s kind of like wrapping them—securing them—in the wings of an eagle and saying, ‘We’re in this with you. We’re not letting go.’”



The Carlsons celebrated the adoption of all three brothers with a special cake.



To honor the boys’ Lakota heritage, the Carlsons presented a custom-made star quilt to each of them at the adoption ceremony. The boys chose the colors of their own quilts, and their names and adoption date were embroidered on the blankets.



Louis, Clayton and Rhyder Carlson with Sara Fangmeier of the SD Department of Social Services at left and Tina Graber, Wendy’s Wonderful Kids Adoption Specialist from CHS at right.



“
The positive effects of hope are especially strong for those experiencing adversity and trauma. Hope is an established protective factor and provides a framework for action.
”

-CHAN HELLMAN, PHD

VOLUNTEER IS ROLE MODEL FOR CHILDREN—AND ADULTS

Volunteering doesn't take much of Greg Harrell's time. He spends one or two hours a week with a child at Sioux Falls Children's Home (SFCH).

But Greg, who is Senior Vice President at Quoin Bank in Sioux Falls, has been volunteering at SFCH for nine years. That translates to nearly 500 hours as a Big Buddy, or mentor, to children in residential care!

“Greg is a very sought-after Big Buddy,” said Children's Home Society (CHS) Volunteer/Development Coordinator Faron Lais. “When he comes into the unit to meet his Little Buddy, all the kids greet him.”

“And it's common for some of the Residential Youth Counselors, who work directly with children, to ask him if he would consider mentoring a particular kiddo.”

Faron attributes Greg's popularity to his consistency. “He keeps showing up. Everyone notices it,” she said.

Consistency is key in all mentoring situations, but especially for Big Buddies at CHS. Many of the children served have not experienced consistency in their homes. An important part of residential care is helping children learn they can trust adults.

Greg's mentoring inspiration

Greg was at a Chamber event when he learned about Children's Home Society. He had been interested in the idea of mentoring but hadn't signed up anywhere yet.

Greg explained why he wanted to mentor. “Growing up, I was fortunate enough to have a dad that was involved in my life. But then I also had members of my church that were men and that were mentors. I had

sports coaches that were mentors. I had male teachers that were mentors. And a lot of my dad's and mom's friends who were men were great mentors for me.”

All these informal mentors helped shape Greg into the person he has become. “I wanted to be able to give back. I wouldn't be here today if it weren't for those mentors,” he said.

Greg grew up in Fairbanks, Alaska; both parents were in the military. He was recruited to play football at Black Hill State University. After graduation, he lived in Colorado and Wyoming, working for Wells Fargo, and then landed his current position in Sioux Falls.

The nuts and bolts of mentoring

The average length of stay for children at SFCH is 18 months. When volunteers sign up to be Big Buddies, the hope is that they'll mentor the same child until discharge.

Greg is currently on his fifth Little Buddy. He's worked with several kiddos from the

intensive unit, where some children with greater challenges live, and he's become friends with Unit Supervisor Scott Egan.

"Normally if the weather's nice, we're outside," Greg said. "We walk the trail or we might play basketball. The young man that I currently mentor, who's around 11 or 12, likes to play Pokémon Go—we'll walk around the campus and capture Pokémon. Some of the other boys were into football, so we would throw around the football on the playground. Around this time of year, we'll play a lot of board games."

"Today I'm bringing ingredients to make sugar cookies because my Little Buddy wanted to bake and give cookies to kids and staff on the unit. We'll probably play Monopoly, which he beats me at every single time," he laughed.

"And I gave him a book for Christmas, *Lord of the Rings*, because he loves to read. I'm going to see how far he's gotten in the book." And before he leaves, Greg always asks what the child wants to do the following week.



Longtime volunteer Greg Harrell with CHS Unit Supervisor Scott Egan.

Giving and receiving

The influence of a Big Buddy can last a lifetime. Greg is aware of this, and of his position as a role model.

"In me, I think they see what their future could be like," Greg said. "Seeing an adult that is articulate, that is successful, that demonstrates what a man should be and look like. Before they got to Children's Home, they may not have seen a lot of positive male role models. They recognize that, oh, this is how life can be and this is how a man should act."

"I take a lot of pride in making sure that I am upholding what a man should do—taking responsibility, being respectful and striving to work hard every single day," he said. "My Little Buddies will ask me, how's the bank and how's work and what did you do this weekend and things like that, and

I share some of the things I do. Their lives may have been completely different and I'm able to provide that perspective."

Still, Greg feels that he's the lucky one.

"I've learned gratitude," he said. "As adults, we think gosh, I wish this or that had been different, in our own lives. But then I look back and realize, I'm pretty blessed. A lot of things have worked out in my favor, while a lot of kids just weren't born into those opportunities. It's allowed me to feel less selfish."

"I have not been fortunate enough to have my own kids. But I get to spend quality time with some of these great kids, and they have been great, all five of them," he said. "I mean, I still have their pictures—a couple are in my office, and some are at home. It's just been very rewarding."



Big Buddy Greg and his Little Buddy enjoy a variety of activities, including playing UNO. Greg says his Little Buddy usually wins.

MESSAGE TO OTHERS

Greg is impressed by CHS and the care that children receive.

"Children's Home should get more recognition than they do," he said. "I think a lot of people in the community just have no clue what they're doing. It's unbelievable the things they do, the staff and the teachers. I've gotten to know some of them over the years, and some have been there for a long time."

"I know they're always looking for Big Buddies," he said. "If you care about kids, if you care about the future of this community, if you care about the future of this country, and you have an opportunity to volunteer an hour a week, do it. Even if you have your own kids."

"Just being a consistent, positive force in a young person's life makes a world of difference," said Greg.

To learn more about volunteering at Children's Home Society, please visit chssd.org/support/volunteer.

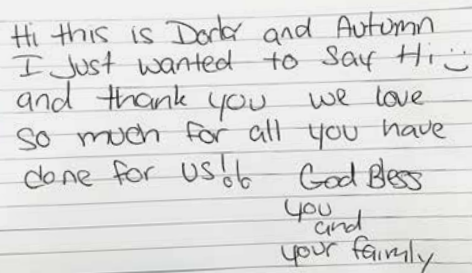
BRIGHT START HOPE STILL SHINES

Bright Start nurse Holly recently was approached by a stranger.

“I was walking out of the library after a visit today,” she said. “A gal in a bright pink sweatshirt walking past me was smiling at me almost like she recognized me or something.”

Holly greeted her, and the woman said she’d been a Bright Start client and asked if Kristy (another nurse) was still with the program. She’d seen that Holly was wearing a Bright Start jacket.

“She was so excited to hear that Kristy is still with Bright Start and shared what a difference Kristy made for her. She asked if she could write a note to Kristy and if I’d give it to her. You could really tell by her reaction how deeply the client was touched—even all these years later.”



Hi this is Dorla and Autumn
I just wanted to say Hi :)
and thank you we love
so much for all you have
done for us! God Bless
you and
your family

Kristy called her former client, Dorla, to visit. Then they met at the new Bright Start offices at Shelter for Family Safety. Hugs, laughter and a few tears were shared. They reminisced about when they first met.

In 2014, Kristy became the Bright Start nurse for Dorla and her infant daughter, Autumn. “I needed the help and I was nervous and scared,” says Dorla. “I was really thankful. I had no family to help.”

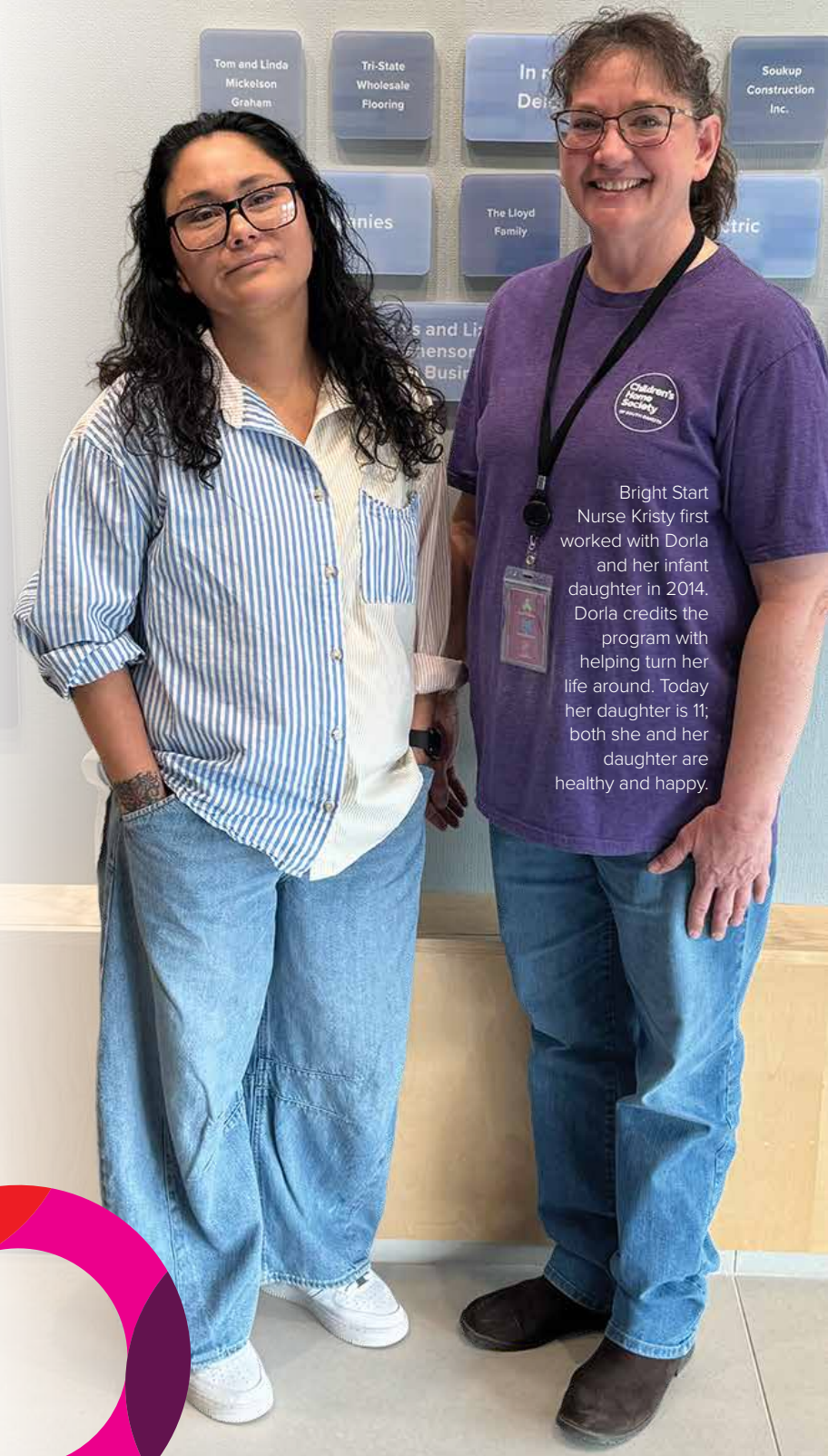
“Life is stressful,” says Kristy. “And if you don’t have people to depend on, it’s even more so.”

Dorla nods. “The program was so awesome...so much grace and so much hope, help and support. The love and compassion that you had for me and my daughter.” Tears come to her eyes.

Kristy helped Dorla establish goals, find pathways, and believe in her ability to succeed—the pillars of the Science of Hope. Dorla was living in a motel at first, Kristy remembers. She and the Bright Start therapist helped Dorla get a driver’s license, which was a big step towards getting a job and accessing help in the community.

“I loved the home visits, too,” recalls Dorla. “It was more like family. I had so many questions. It was just so helpful.” Having the assurance that she was doing the right things for Autumn helped her feel more confident as a mother.

“I just remember her always smiling,” Kristy says. “She always seemed to have a positive attitude. Even when things were



Bright Start Nurse Kristy first worked with Dorla and her infant daughter in 2014. Dorla credits the program with helping turn her life around. Today her daughter is 11; both she and her daughter are healthy and happy.





Reconnecting after nearly 10 years was emotional for both Dorla and Kristy.

stressful and she was frustrated, she was always laughing and trying to find the good.”

Dorla laughs. “Wow. That’s nice to hear,” she says. “I didn’t think so. But thank you.”

Dorla and Autumn are very involved at church. “I went through a lot of inner healing, through Jesus, healing from stuff that happened to me when I was a kid,” Dorla says. “The people are kind and supportive, again like family.”

Today, Autumn is 11 years old. She’s excited about starting middle school next year.

“I want her to be a woman of God,” says Dorla. “I pray that she walks in honesty, that she has integrity. I just want her to experience Jesus the way I did.”

“I’m just so proud of Dorla and what she’s accomplished,” Kristy concludes. “There are always struggles in life, but you always seem to find your way out of that. And I think that comes from the positivity I see in you and the joyful outlook that you have when things are tough.”



CHS ACHIEVES COA ACCREDITATION

As this Annual Report goes to print, we’re celebrating our recent achievement of earning COA accreditation.

In February 2026, Children’s Home Society (CHS) transitioned from Joint Commission accreditation to the Council of Accreditation (COA). While Joint Commission supported our residential programs, COA aligns more closely with all of our services, covering everything from Bright Start to Outpatient Mental Health Services.

Hope Perini, Compliance Director at CHS, led the accreditation process, ensuring we met COA’s nationally recognized standards for quality and effectiveness.

“COA is meaningful for our organization because it evaluates the full scope of services we provide,” said Hope. “From early childhood programs and residential treatment to foster care and adoption services, COA reviews how all our programs work together to support children and families at every stage of their journey.”

She added, “Going through this process affirms that CHS delivers high-quality, evidence-based services while operating with accountability, professionalism and care.”

COA is a globally recognized, independent nonprofit that partners with human service organizations nationwide to help them meet rigorous standards of best practice.

To earn accreditation, CHS completed an extensive process that included detailed documentation, evaluation of programs and operations and an in-depth site review performed by experienced peer reviewers.

“The volunteers who conducted the evaluation help run other PRTF (Psychiatric Residential Treatment Facility) programs in other states,” said Freddy Maseman, Vice President of Psychiatric Residential Treatment at CHS. “They understand the work we do and recognize the standards and barriers we face every day.”

Having peer reviewers who comprehend our work was valuable during the evaluation process, and receiving their praise was even more noteworthy.

- “The Shelter is the most beautiful domestic violence facility I’ve ever seen.”
- “The Outpatient Mental Health program is new but mighty. CHS identified gaps in the community and acted on them.”
- “CHS has strong training programs.”
- “CHS’s client rights demonstrate that they treat people with dignity and respect.”
- “Evidence of a trauma-informed approach across the agency, from clinical to administrative departments.”
- “COA accreditation makes CHS a preferred agency across the state adhering to best practices in all service lines.”

This feedback demonstrates CHS’s commitment to delivering thoughtful, culturally responsive services that meet the evolving needs of families across our state.

While CHS already practiced many COA standards, the accreditation process highlighted opportunities to strengthen workflows by formalizing policies and procedures and maintaining consistency across all programs.

Over the next four years, COA accreditation will guide our ongoing quality improvement efforts, helping us enhance programs, support staff and expand services so that our clients can heal, grow and thrive. Most importantly, it reinforces our promise to the community: our clients remain at the center of everything we do.



Residential Treatment and Schools

Black Hills Children's Home and Sioux Falls Children's Home provide psychiatric residential treatment and special education schools, along with treatment-level day schools for local children. We partner with parents and caregivers to serve children with social, emotional and behavioral challenges. Some have experienced domestic violence, abuse or neglect; others have mental health needs that cannot be met in a home or traditional school setting.

| | |
|----------------------------|-------------------------|
| Budget: | \$20,264,767 |
| Charitable Support: | (6%) \$1,211,497 |

Children's Home Shelter for Family Safety

Children's Home Shelter for Family Safety provides free services for adults and children who are victims of domestic violence, stalking, elder abuse, sexual assault and child abuse or neglect.



| | |
|----------------------------------|----------------------------|
| Budget: | \$5,810,025 |
| United Way: | (8.3%) \$479,735 |
| Other Charitable Support: | (64.6%) \$3,755,382 |

Outpatient Mental Health

CHS provides hope-centered and trauma-informed mental health services for children and families in Rapid City. Our team of physicians, therapists, case managers and community health workers provides exceptional services as part of our continuum of care.

Family Engagement Services offers intensive case management, interventions and support to youth and families at imminent risk of system involvement.

| | |
|----------------------------|--------------------------|
| Budget: | \$2,080,342 |
| Charitable Support: | (39.3%) \$818,534 |

Child Advocacy Center and Prevention, Training and Education

Our commitment to prevent, treat and heal trauma in children and families brings these two programs together. The Child Advocacy Center serves children who are alleged victims of sexual or physical abuse, or who have witnessed violence, by providing forensic interviews, support to families and coordinating specialized medical exams. Prevention, Training and Education provides statewide education, trainings and events focused on preventing child abuse.

| | |
|----------------------------|--------------------------|
| Budget: | \$796,292 |
| Charitable Support: | (72.8%) \$579,992 |

Bright Start

Bright Start, a nurse home visitation program, provides care for families with socio-economic risk factors during pregnancy and up until the child turns two. Nursing services include prenatal, maternal and infant/child health and development assessments and education; and parenting, health, safety and nutrition education.



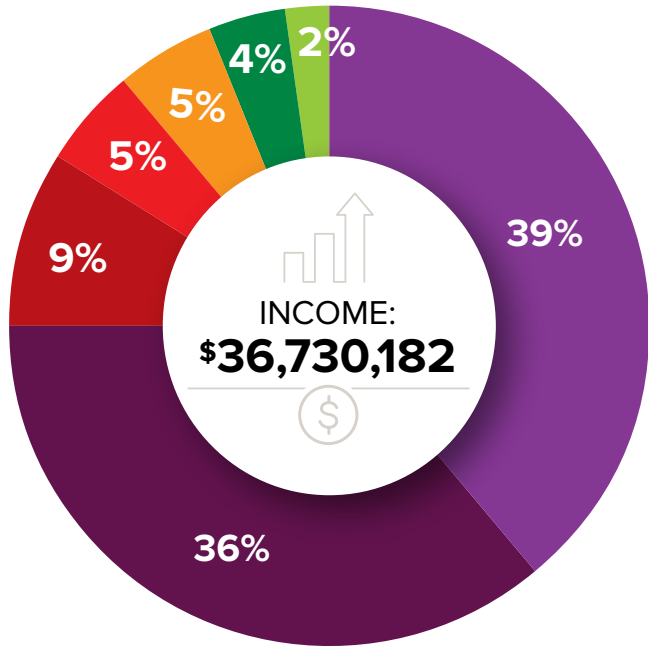
| | |
|--------------------|------------------------|
| Budget: | \$1,330,665 |
| United Way: | (18.3%) 243,100 |

Foster Care and Adoption

Wendy's Wonderful Kids (WWK) works to find adoptive families for children of all ages who are considered hard to place. Therapeutic Foster Care focuses on therapy, family support, case management and referrals.

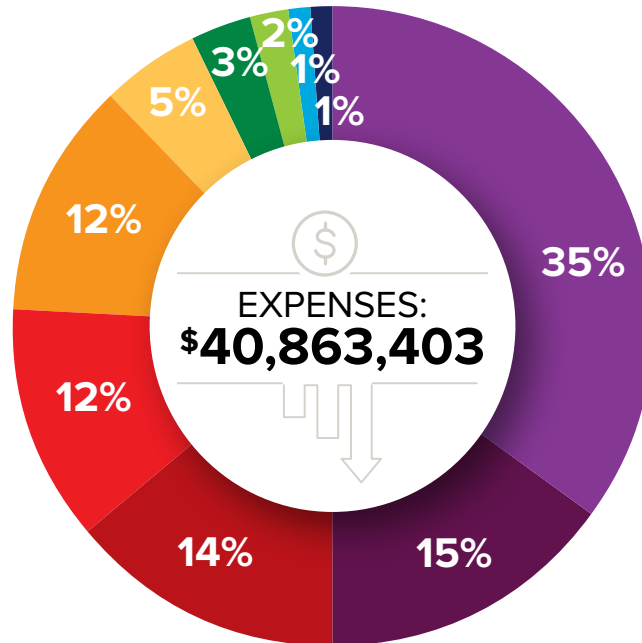
| | |
|----------------------------|--------------------------|
| Budget: | \$630,357 |
| Charitable Support: | (45.5%) \$286,997 |

Children's Home Society: Financial Report FY2025



- Medicaid
- Charitable Gifts & Endowment Distribution
- Government Grants, Contracts and Fees
- SD Department of Education
- School Districts
- Other
- United Way for Bright Start & Shelter for Family Safety

- Residential Treatment
- Shelter for Family Safety
- Schools
- Capital Expenditures
- Administration
- Outpatient Mental Health Services
- Bright Start
- Child Advocacy Center & Prevention, Training and Education
- Foster Care and Adoption
- Fundraising



CHS impacts nearly **16,000 vulnerable children and families annually** from every county in South Dakota. We serve **children of all ages** across our services.



We serve ages 4–14 in residential treatment. We are the only provider in South Dakota caring for children ages 4-9 accredited by Council on Accreditation (COA).



We are the state's **largest children's psychiatric residential treatment facility**—38% of all beds in SD.



We have a **low staff-to-child ratio** to ensure high quality care.



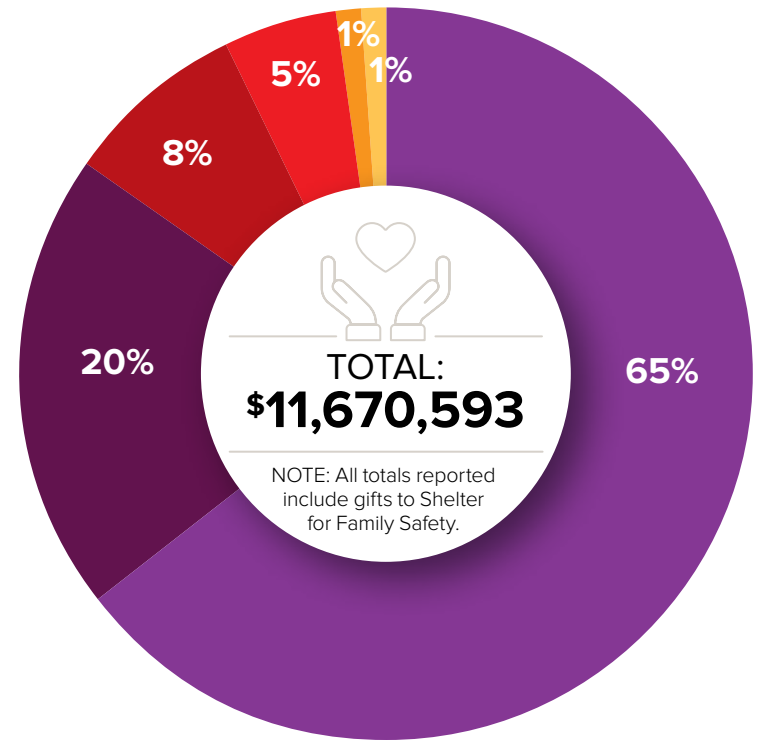
Children's Home Shelter for Family Safety is the **largest domestic violence shelter in South Dakota**, providing more than 3,000 individuals with services each year.

Children's Home Foundation

(CHF) was established in 1982 with a mission to ensure that CHS programs and services are fully funded. To that end, CHF raises financial and gift-in-kind resources for operating support and facility needs, and works to establish long-term sustainability through endowment funds and estate gifts.

Children's Home Foundation Funds Raised FY2025

- Campaign Gifts
- General Support Gifts
- Gifts-in-Kind
- Restricted Gifts
- Endowment Gifts
- Other Gifts



Help
**SECURE
THE
FUTURE**
of CHS

Since the early 1900s, caring friends have helped CHS during challenging economic times by providing bequests from their estates. Today, donors use a wide variety of gift vehicles, including:

- **Bequests through wills and trusts**
- **Lead Trusts and Charitable Remainder Estates**
- **Making CHS the beneficiary of a life insurance policy or retirement plan**

Legacy gifts are used on an unrestricted basis to support CHS programs unless otherwise restricted by the donor. These restricted designations can be made to support a specific program or area of service at CHS as long as the specific designation is outlined by the donor.

VISIT [CHSSD.ORG/SUPPORT](https://www.chssd.org/support)

GUARDIANS OF THE CHILDREN

A legacy program established to recognize and honor those people whose vision, philanthropy and love of children have been demonstrated by a planned estate gift to Children’s Home Foundation. Funds from the Foundation support programs of Children’s Home Society including Black Hills Children’s Home, Sioux Falls Children’s Home and Children’s Home Shelter for Family Safety.

Ken & Sally Anderson
Tom & Rebecca Batcheller
Kevin & Robin Baum
Yvonne Behrends
Chuck[†] & Joan Benson
Bob & Deb[†] Biernbaum
Donald & Leona Bierschbach
Kerry & Donna Boekelheide
Harold & Helen Boer
Dick & Jane Bohy
Dustin & Jenna Bonn & family
Rob & Leslie[†] Brandner
Rachel & Rheann Brekke
John & Jan Brewer
Dick & Sue[†] Brown
Bill & Lynne Byrne
Kosta & Nancy Constantine
Doug & Darla Crown
Rich[†] & Sharon Cutler
Dennis & Linda Daugaard
Michael Day & Diana Dufur-Day
Jeff Denison
Jim & Susan[†] Dodson

Dave & Cathy Eddy
Mark Edeen
Steve & Kris Egger
Paul Everson
Steve & Allison Garry
Tom & Margaret Geertsema
Arnie Hauge
Ryan & Leah Hofer
Bob & Sandy Hoover
Susan M. Hughes
Sherri Jackson
Betty Jones
Jeff & Doreen Jorgenson
Duncan & Ellie Keirnes
Dan & Arlene Kirby
Joe & Jennifer Kirby
Paul & Ruth[†] Kokenge
Scott & Marilyn Korsten
Peter & Janis Lee
Olivia Lima
Vernon & Donna Lind
Bill & Lorrae Lindquist
John & Barbara Lockwood

David[†] & Rita Loving
Pamela Madsen
Vicki Madsen
Jack[†] & Ellie Marshman
Mac[†] & Bev McCracken
Tim & Diane Meyer
Linda Mickelson Graham
Mike & Lisa Modrick
Robert & Deborah Mudge
Kent & Cathy Mundon
Stephen R. & Mary Lynn Myers
Dave & Pat Nadolski
Bruce & Kim Nearhood
Jeff & Muriel Nelson
Erv & DeMaris Nesheim
Dr. Wesley Nord
Bob & Cathy Novak
Tom[†] & Michele Olsen
Lee[†] & Lynn Otis
Michael & Karen Pekas
Dale & Kathy Peterson
Don & Ann Platt
Shawn & Michelle Poe

Janice Radach & Family
Marlene Rance
Warren & Rhea[†] Reed
Merlin & Bev Riedel
George & Donna Roberts
Steve & Tracie Rohlf
John & Kay Rozell
Art & Maggie Russo
Vernon & Ruth Schaefer
Al Schoeneman
Don Schuur
Peg & Edward[†] Seljeskog
Jeff & Lori Skinner
Dr. John Spangler
Glenn[†] & Mary Jane Stalheim
Jim & Carolyn Stavenger
Mark & Jennifer Stavenger
Pastor Carli Steffes
Dennis[†] & Glenda Stene
Jack & Linda[†] Stengel
Kathryn Stevens
Dr. Cameron & Susan Stokka
Jeannette Stowsand

Glen & Caren Straatmeyer
Judy Stransky
Dr. Robert & Maureen Suga
Pam Taylor & Steve Jansa
Dave & Nancy Thomas
John & Lee Thomas
Fred & Maryann Tully
Myron & Joan Van Buskirk
Beth Walker
Tom & Kathy Walsh
Steve & Angie Watkins
Rick & Mary Weber
Linda Wells
DeAun West
Drs. Robert[†] &
Carolyn Fassi Wharton
Richard & Donna Wilson
Joe & Karin Youngberg
Thomas[†] & Lynne Zimmer

[†]Deceased

During your estate planning, please consider supporting our mission as part of your legacy.

To learn more, contact

Jon Mammenga

Children’s Home Foundation
Chief Philanthropy Officer

605.659.4933

jon.mammenga@chssd.org



LEGACY GIFTS

Unless otherwise restricted, realized estate gifts to Children’s Home Foundation are designated as unrestricted and are used to fund and support CHS services.

LEGACY GIFTS RECEIVED IN 2025:

| | |
|-------------------------|------------------|
| James & Kathryn Berreth | \$3,676 |
| Peter Hauff | \$15,000 |
| Craig Lloyd | \$10,032 |
| Lula Mae Red Cloud | \$30,000 |
| Colleen Sanford | \$648,000 |

***Bold** type denotes gift to Children’s Home Shelter for Family Safety.*

MORE THAN NUMBERS

CHS analyzes all of our program data and combines it into a single dataset. We also use disaggregated data where applicable to gain additional insight into who we serve and to understand their needs.

18

Months average length of stay in Residential Treatment

78

Children attending CHS day school in Sioux Falls and Rapid City

65%

of children in Residential Treatment who were between the **ages of 6-10**

7,852

Transportation provided for clients at Children's Home Shelter for Family Safety

53%

of our Residential Treatment referrals came from Child Protection

64%

of children in Residential Treatment who are **boys**

2,263

Nurse home visits to **209 families** through Bright Start

27,683

Shelter days provided at Children's Home Shelter for Family Safety

4,843

Youth/adult attendees at CHS-led trainings held statewide on child abuse prevention, trauma, and domestic violence education

67%

of children who were **12 and under** out of **360** forensic interviews conducted at CAC

293

Prevention, Training and Education sessions offered statewide

42,528

Total meals served at Children's Home Shelter for Family Safety

36%

of children in Residential Treatment who are **Native American**

SUPPORT GIFTS

Gifts Given January 1–December 31, 2025

A listing of gifts that help support all CHS services, including those provided for Children's Home Shelter for Family Safety, which are noted in **bold** type.

\$300,000

Cameron & Susan Stokka

\$150,000 +

Cleaver's Chef Challenge

\$50,000 +

Megan & Eric McDonald
Pipestone

Charlie Smith Endowment*

Jeff & Michelle Thue

\$38,000 +

Arnie Hauge
John & Kay Rozell
Lynette Unzelman

\$25,000 +

Miles & Lisa Beacom*
Robert & Rita Elmen Foundation
Evonsys Inc.
First PREMIER Bank
James & Barb Lake
Lloyd Construction Company
Nehring Family Nice Foundation
Don & Ann Platt
Don & Ann Platt
POET
Vern Eide Motorcars Inc.

\$20,000 +

John & Ruth Cannon Fund*
Earl & Loretta Davis Family
Foundation*
First Interstate BancSystem
Foundation Inc.
Bill & Carolyn Hinks

\$15,000 +

The Clarence & Anne Dillon
Dunwalke Trust
The Foskett Family Foundation
Harvard Integrations
Red Rock Bar & Grill

\$10,000 +

**Adams Mastrovich
Family Foundation**
Dr. P. Kenneth & Margaret Aspaas Jr.
Dr. P. Kenneth & Margaret Aspaas Jr.
Sam & Susan Assam
Avera
BNSF Railway Foundation
The Carter Fund
Citibank (South Dakota) NA Fund*
Graham Companies
Tom & Jane Heinz

Mary Jo Jaqua
Deanna & David Knudson
Duane & Connie Larson
Brenda & David O'Hara
Ken Pike
Presentation Sisters
Leo & Hazel Reppert Endowment*
Kevin & Laney Schieffer
Those Guys A.B.A.T.E.
Michael & Mary Trykoski
Dr. Kirke & Dorothy Wheeler
Woods Fuller Shultz & Smith PC

\$5,000 +

John & Gladys Bahnsen
Miles & Lisa Beacom
Lois & Richard Bierschbach
Cherril Brown
Tom & Linda Bunkers
CorTrust Bank
Richard & Sara Crawford
Justin Cutler
Dacotah Bank
Dr. Robert & Jan Dahl
Dakota Video & Post Productions
Daugaard for South Dakota
Mark & Sally Dominick
Timothy Dougherty & Karen Schreier
Arthur & Carol Ehde
Enterprise Mobility Foundation
Experian
Tim Hamel & Somboon
Jaihar-Hamel
Lynette Hardy
Lauverne Harr
Jon & Kimberly Heck
Bryan & Pamela Hedman
Eloise Hefty
Rick & Glenys Hull Charitable Fund*
Terry Jacobson
Paul Kokenge
Kwik Trip
Roger Larsen Memorial Fund*
Jeff & Julie Laultt
Marsh McLennan Agency LLC
Linda Mattson
Bev McCracken
Charity McKnight
Linda Mickelson Graham
The Elmer & Delphie Nord Fund
Nyberg's Ace
David & Barbara Ohme
Charitable Fund*

Christopher & Deb Palen

Jennifer Reed
John Robertson
Steve & Tracie Rohlf
Runge Enterprises Inc.
Sammons Financial Group
Vernon & Ruth Schaefer
Al Schoeneman
Seljeskog Family Foundation*
Sercl Family Fund*
Janet Sherman Charitable Fund*
Showplace Cabinetry
South Dakota Law Enforcement
Charities
South Dakota Trust Company
The First National Bank in Sioux Falls
Thrivent Choice
Tito's Handmade Vodka
The TJX Companies Inc.
Trinity Lutheran Church, Tea
Myrl & Lois Unzelman Family Fund*
Janice & Vernon Van Vuuren
Tony & Sara Venhuizen
RuthAnn & Hugh Venrick Family Fund*
Vern Eide Motorcars Inc.
Waterbury Heating & Cooling
Ed Weiland

\$2,500 +

American Bank & Trust
Scott & Stephanie Barth
Berreth Charitable Remainder Unitrust
Robert Biernbaum
Black Hills Wind & Fire
Motorcycle Club
Dustin & Jenna Bonn
Bristol Myers Squibb
Capital Services
Cimarron Label
Nicki Cleveland
CNA Surety
CNH Industrial America LLC
Community Reformed Church,
Sioux Falls
Crossroads Trailer Sales & Service Inc.
Richard† & Sharon Cutler Fund*
Raymond Daugaard Memorial Fund*
Jeffrey Delay
Jackie & Marvin Eich
Eide Bailly LLP
Firehouse Subs
John & Anita Fluit Jr.
John & Anita Fluit Jr.

Gage Brothers Concrete
Tom & Lisa Gerner
Carmen Graves
Karen & Mark Gubbrud
Allen & Joann Gundvaldson
Jeffrey Hambek
Steve & Susan Hauff
Danelle Hauge
High Point Networks LLC
Kevin James & Dr. Cara Hamilton
Jer Events
Thomas & Margaret Kelly
Debra Kennedy
Joe & Jennifer Kirby Charitable Fund*
Elizabeth Kludt
Colleen Larson
Paul Lewis
Bill & Lorrae Lindquist Family Fund*
Lloyd Companies
Douglas & Elizabeth Lynch
Greg Lyon & Jennifer Sales
Maguire Iron Inc.
MarketBeat
Marsh McLennan Agency LLC
Modern Woodmen of America
Major Mark & Jessica Morrell
Vance & Jessica Newman
Jay & Melanie Parsons
Dieter Proehl
Louis & Joyce Profilet Endowment*
Ronald & Sheila Raczynski
Norman Rasmussen
Rosenbauer Firefighting Technology
Wayne & Gaye Sander
Sam & Betty Speier Fund*
Sam & Betty Speier Fund*
Darrell & Beth Schmith
Greg & Melissa Schweiss
Greg & Melissa Schweiss
Norbert & Jane Sebade*
Kevin & Lorna Severy
Gail Shlanta
Showplace Cabinetry
Matt & Yvonne Smith
Kenneth & Judy Snell
Dean & Rita Sorenson
Al Spreizer
Mary Stock
Dr. Robert & Maureen Suga
Thrivent Financial Matching Gift
US Bank
Dr. Bob & Marilyn Van Demark
Dave & Judy Van Veldhuizen
Vern Eide Motoplex
John Voight
Michael & Victoria Wilds
Jack Yonkovich

\$1,000 +

Acucare Physical Therapy Ltd
John & Dianne Amdahl
Danny & Emily Amundson
Mavis Amundson
David Andersen & Olivia Lima

Virgil Andersen

Dr. Dale & Jeanette Anderson
Robert & Karen Appelwick
Dan & Sandra Auch
Avera McKennan Hospital &
University Health Center
Bob Baker*
Reuben & Marlowe
Bareis Family Fund*
Barrow Orthodontics PC
George & Ramona Bartels
Charitable Fund
Christina Bauer
Joan Benz
Rex & Julie Benz
Ardys Berven
**Brian & Janet Bird
Charitable Fund***
Black Hills Federal Credit Union
David & Jill Bockorny
David & Jill Bockorny
Diann Boesch
Boen & Associates Inc.
Lana Borem
Sid & Barbara Bostic
Dr. Verdayne & Mary
Brandenburg
Todd & Linda Broin
Paul & Julie Brufat*
Roy Burr & Arlene Ham-Burr
Bill & Lynne Byrne
C & R Supply Inc.
Caswell Plumbing & Heating
Cipher Imaging
CNA Surety
Concentrix
Paul & Mary Ellen Connelly
Charitable Fund*
Kosta & Nancy Constantine
Bernice Corey
Mark & Michelle Covrig
Nick & Sara Crank
Culver's
Dennis & Linda Daugaard
Joyce Daugaard & George Noble
Davenport Evans Hurwitz
& Smith LLP
Merlin & Barbara Davis
Jon De Jong
Mark & Susan Duffek
Joel & Vicky Dykstra
Kent & Susan Edson
Kris & Steve Egger
Charitable Fund*
Embrace Church, Sioux Falls

David & Deanna Emery
Dalliss & Marion Englund
Cy & Sandy Farner
First Bank & Trust
First Rate Excavate Inc.
First Reformed Church, Inwood, IA
Diane Fischer
Steven Fox
Marlys French
Frisbee Plumbing & Heating
Suzanne & Rich Gabrielson
Michael & Gracia Gillespie
Graco Inc.
Grandview Reformed Church,
Armour
Great Bear Ski Valley
Dan & Jennifer Grider
Trisha Grocott
Mark & Stacy Gross
Jason & Bethany Gusso
Curtis & Glenda Hage
Vern Hagedorn
Heidi Hague
Hansen Family Endowment*
Hansen Family Endowment*
Hansen Manufacturing Corporation
The Stanley & Jean Hawthorne Fund
HDR Inc.
Timothy Heiman & Judi
Woodward-Heiman
Richard & Darlene Heinricy
**Drs. Scott Henry & Terri
Peterson-Henry**
Jim Herrboldt
Hillcrest Church, Sioux Falls
Howe Heating & Plumbing Inc.
Darrel & Renae Hoyer
Hy-Vee Operation Helpful Smile
Hy-Vee Operation Helpful Smile
Pam Taylor Jansa & Steve Jansa
Dave Jensen
Pamela Best Johnson
Tyler Kadinger
Don & Darla Kempf
David & Marilyn Kerssen
Gary & Joyce Kessler
Dan & Arlene Kirby
Don Knudson Fund*
Darrel & Marlene Kooi
Tim & Kori Kromminga
Marten & Betty Kruger
James & Joyce Kurtz
Lands Lutheran Church, Hudson
Kristi Lee
Peter & Janis Lee
**Darlene & Wendell Liaboe
Endowment***
Ralph Lindner
Candice Lockwood
Loft Advisors
Lois Lounsbery
Lynch Performance LLC
Ted Massey

Gary & Zelma McCormick
Patrick McGreevy
Mary McQuillen
Mary Meier
David & Val Mickelson
Kathleen & Dusty Rick Miller
Tyson & Tokie Morgan
Kent & Judy Morstad
Charitable Fund*
Ms. Molly Foundation/Molly Maid
Robert & Deborah Mudge
Christine Muller
Scott & Shannon Murfield
Jeffrey & Mary Jo Murray
Charitable Fund*
**Jeffrey & Mary Jo Murray
Charitable Fund***
Dave & Becky Nelson
Charitable Fund*
**Dave & Becky Nelson
Charitable Fund***
Genevieve Newell
Rodora Nyberg
Patrick & Cindy O'Donnell
David & Jennifer Olson
Jack & Valerie Paladino
Pathward Financial NA
JoAnne Peterson
Gustavo & Loreto Pizarro
Ed Polzine Fund
Owen & Megan Postma
Luke & Amy Prouty
Michael & Jennifer Puumala
Charitable Fund*
Steve & Terri Reilly
Reliabank Dakota
Al & LeeAnn Rieman
Robert & Sarah Roth
Conley Ruud
Steve & Kathy Sanford
Steve & Kathy Sanford
Amy & Gary Schaap
Darrell & Twyla Schaap
Scott & Natalie Schneidermann
Charitable Fund*
Thomas & Lori Schuch
Philip & Cindy Schumacher
Gary Shaffer & Corby Locke
**Shetek Lutheran Ministries,
Slayton, MN**
Sioux Falls Woman's Alliance Fund*
Sioux Valley Energy
Skinner Financial Services
Jeff & Lori Skinner Charitable Fund*
Sletten-Auringer Family Fund
Slim Buttes Lutheran Church, Reva
Smit Family Farms LLC
Cleo & Gary Snuggerud
Charles & Ruth Soldano
Paul & Jil Sova Family
Charitable Fund*
David Staum & Jeanne
Abbott Staum

Scott & Staci Stern
Bill & Cheryl Taylor
Tennyson Family Foundation
Paul Thorstenson
Thrivent Choice
Thrivent Financial for Lutherans
Gift Matching
Douglas & Linda Truckenmiller
Gene & Julie Tverberg
George Twitero & Shari West Twitero
Dennis & Nancy Van Der Weide
Tanya & Curt Vanoot
Tia Vavra
Christopher & Shalece Vinson
Dr. Bruce & Judy Vogt
Linda & Arden Waag
Merle & Corene Wacker
Darla Wellendorf
Elizabeth & Terrance Whalen
Mary White
Roger & Sherri Willard
Bob & Debra Winkels
Eileen Winter
Kevin & Laurie Wohlleber
Norma & Chuck Wise
Xcel Energy
Dwight Young
Lori Zimmer
Lynne Zimmer
\$500 +
Bernice Anderson Endowment*
Kay Anderson
Marjorie Anderson
Julie & Curt Anderson Friesen
Peter & Laura Atkins
Baan Dek Montessori
Edwin & Janice Baatz
Bank of America
Charitable Foundation
Tom & Rebecca Batcheller
Jonah Beacom
Donald & Leona Bierschbach
Donald & Leona Bierschbach
Diane & Bob Biver
Walt & Jan Bones, III
Brandon Pizza Ranch
Brandon Plumbing & Heating Inc.
Rick & Holly Brunick
Burke Family Charitable Fund^o
Randy Bury & Sonia Gaardner Bury
Cadwell Sanford Deibert
& Garry LLP
Steve & Helene Carlson
John & Rebecca Carmody Family
CHS Endowment*
Chef Dominique's Catering
Michael & Julie Childers
Citibank-McKnight^s
Lisa Collins
Colman Lutheran Church
Karyn Cox
Grady & Bernice Crew
Lisa Crist

Darla & Doug Crown
James & Deanna Daum
**Davenport Evans Hurwitz
& Smith LLP**
Jay & Christine Dean
Jay & Christine Dean
Sharon DeHaan
Virginia Dettman Charitable Fund
Judith & Bill Duhamel
Jolynn Dyce
Jenevieve Eckhoff
Jeffrey & Hattie Edman
Kurt Eeg
Sidney & Mayona Elcock Family
Endowment*
**Sidney & Mayona Elcock Family
Endowment***
Elite Electric & Visions Design
Envive Chiropractic
Epicosity
William & Lisa Erck
Jeffrey & Carmen Erickson
Dr. David & Julie Ermer
Abbie Everist
Paul Everson
Paul Everson
Faith Family Church &
Outreach Center, Sioux Falls
Roger & Kathy Fick
First Lutheran Church, Colton
First Presbyterian Church, Britton
First United Methodist Church,
Brookings
Lisa Fisher
Kristin Flora
Pat & Roger Fodness
William & Kay Folkerts
Gregory & Connie Forstner
**Germantown Presbyterian Church,
Chancellor**
Michael & Gracia Gillespie
Paul & Katie Gilmore
Jerry Godfrey
Stan Graber Financial Services Inc.
Dan Grider Sr.
Elizabeth Groff
Nick & Carol Gusso
H & H Mobile Home Service Inc.
Judy Hallstrom
Ellen Hamilton
Jackie Hanthorn
Gregory Harp
Roger & Chris Heacock^o
Colleen & Rick Hewitt
Dr. Wendell & Holly Hoffman
Alvin & Edith Hoogendoorn
Horst-Isaacson Charitable Fund*
Ron & Veronica Houston
Mary Howard
Justin & Shanna Howe
Interstate Office Products
Interstates Foundation

Dana & Julie Iverson
Clara Jacob
James & Judith Johnson
Arden & Debra Jones
Betty Jones
Rebecca Jones
Elaine Keenihan
Marcia Kittelson
Rick & Kathy Kooima
David & Anita Kostboth
Dr. Tom & Mollie Kafka
Jeffrey Krell
Aaron & Shari Kvistero
Gary & Ingrid Larson
Tamra Lemley
Levo Cares Foundation
Paul Lewis
Gloria Lund
Ellie Marshman & Milton Mutch
Masterson Family Fund*
Mike & Kimberly McElroy
W. McGinnis
Roxann Meyer
Max Mickelson
Patricia Minks
**Minnehaha County
Sertoma Club**
Gregory & Kathy Morrissey
Eleanor Morse
Arun MS
Brooke & Matthew Murphy
Larry Nelson & Dr. Patsy Uken
Ronald Neri & Georgia
Austin Neri
Arthur & Marie Nordstrom
Carlin "Carl" & Berniece
Oberling Endowment*
Oh My Cupcakes!
Laurie O'Hara & Tom Van Anne
Elaine & Wayne Oolman
Laverna Padilla
Melvin Platt
Pride Neon Sign Solutions
Purple Wealth LLC
**Redeemer Free Lutheran WMF,
Canton**
Michael & Suzanne Reuter
Art & Beverly Richert
**Romsdal Lutheran Church,
Hudson**
Dawn Rost
Dr. Paul & Patricia Sampson
Valerie Sampson
Danielle Sargent
Connie & Gary Schickedanz
Dr. Rand & Karen Schlesener
Paul & Nancy Schock
Service First Federal Credit Union
Bonita Shambaugh
Sigaty Dental Clinic PC
David Simons & Susan
Brunick Simons
Sioux Falls Women's Connection

Sioux Valley Optimist Club
 Darrin Skyberg
 Kim & Darrin Skyberg
Darwin & Jane Sletten
Lisa Small
 Charline & Deming Smith
 Family Endowment*
 Deb Soholt
Todd & Pamela Sorensen
St. Michaels Knights of Columbus
No. 12617
Shirley Stach
 Jeannette Stowsand
 Glen & Caren Straatmeyer
Style Encore
 Bobby & Genae Sundby
Denny Thedans
 Robert & Melody Thompson
 Chris & Sherri Thornton
 Brian & Gloria Top
Brian & Gloria Top
Trent Baptist Church
United Methodist Presbyterian
Women, Browns Valley, MN
 United States Marshals Posse
 Richard & Michelle Van Demark
 Charitable Fund*
 Van Horn Financial Services
 J.E. & Amy Van Horne
Gretta Van Schepen
VanderRight
Curt & Tanya Vanoort
 Frederick & Sara Vegge
Vermeer High Plains
 Rita & Donald Vogt
 Voyage Federal Credit Union
 Sharon & Dean Wartenbee
Donna Weinacht
 Jill Weisser-Pekoske & Lee Pekoske
 Jeff & Lynn White
 Nelson & Vickie Wielenga
 Todd Williams
 Winsupply of W Sioux Falls
 Plumbing & Electrical
 Merle & Cecile Wollman
Marjorie & David Wrotenbery

\$250 +

Mavis Amundson
 Holly Anderson
Avera McKennan Social Services
 Brian & Jilliean Beck
Brian & Jilliean Beck
 Bender Commercial
 Real Estate Services
 Mike Bisenius
 Blessed Redeemer
 Lutheran Church, Brandon
Harold & Helen Boer
 Bradley & Tamara Bosch
Bright Eyes Daycare
 Ronald Bristow
 Allen & Gloria Brown
Noah Brown

Tamara & Kevin Burke
Shirley & Gaylord Burley
 Gene & Ann Burrish
Carpenter UMW
 Alan Carter
Catholic Daughters of the Americas
Court Mother Teresa No. 2510
 Joseph Cavinato
Debra Champion
 Chick-fil-A
 Gary & Kathy Conradi
 Stephen Corsi
 Roberta Cramer
 James & Judy Cronin
 Jordan & Calie Dalton
 Terry DeBoer
 Douglas & Gail Deibert
Douglas & Gail Deibert
 Barbara DeLaney
Tammy Devine
Diesel Machinery Inc.
 Daniel & Laura Jo Donohue
 Charitable Fund*
 Emmanuel Baptist Church,
 Sioux Falls
 David Erickson
Fall Festival Folks
Cheryl Ferrie
 Amalia Flynn
 Kelly & Dorothy Gabel
 JoAnn Garner
 Randall Gerloff
Grandview Reformed Church
Women of Hope, Armour
 Rosa Lea Grav
 Evelyn Griesse
 Vicki & Randy Grooters
 Dean & Peg Gulbranson
 David & Darla Hagel
 Dr. Courtland & Julianna Hall
Tammy & Eric Hanson
 Thomas & JoAnn Helland
 Jillian Helseth
Curtis & Myrene Hepner
 Diego Hoganson
George Holborn
 Jack & Gina Hopkins
Howe Heating & Plumbing Inc.
Employees
Elizabeth Hultgren
 Aaron & Stephanie Janssen
 Jerry Johnsen
 Ken & Marita Karels
 Thomas Kattke
Thomas Kattke
Julie Kelley
 Dr. Barry & Karen Kerkaert
 Mary Klatt
Candy Koehn-Lauck & Ray Lauck
Scott & Pamela Koelewyn
Gary & Ingrid Larson
 Judy Lehner
Janet Lenz

Linda LeVee
 Traci Lund
 Alex Marker
 Jack & Betty Marsh
 Christopher Marshall
 Scott & Susan Matthew
 Bruce & Cathy McCollister
Robert & Susan McDowell
 John & Carol McGrath
Jill McGuire
 April Meyerink
 Julie Miller
 Ronald & Cynthia Moegenburg
 Brad & Sheryl Myers
 Chris & Penny Nelson
 Wendy & Keith Neuharth
Dave & Karen Nicholson
Thomas & Jean Nicholson
 Robert & Susanne Niederhaeuser
 North Central Insurance
Glenn Olsen
Sheri & Alan Ouellette
Daniel & Karen Peterson
 Matt & Kara Peterson
 Ross & Lynn Plucker
 John & Penny Porter
 Karen Pratt
 Joy Prehn
Joy Prehn
 Steven Priest
 Sarah Rahn
Lester & Mary Ramstad
Jill Reindl
 Nikkee Rhody
 Steve & Lori Richter
Kirk & Cheryl Rikansrud
Royal Neighbors of America
Lowanda Camp No. 2845
Sanford Health Surgical
Renal & Transplant Unit
Mike & Kay Schatz
 Terry & Patricia Schulte
 Daniel & Erica Seabaugh
Security Savings Bank
SFM Mutual Insurance Company
 Kari Shanard-Koenders
Randall & Amy Slezewski
Solventum
Southeastern Electric
Cooperative Inc.
 Nancy Sprecher
 Patricia Sterud
Duane & Linnea Strande
 Susan Struck
Deb Sundem
Sunnycrest United Methodist
Church, Sioux Falls
Richard & Nancy Swain
 Taylor Family
Tammy Taylor
 Tom Taylor
Tepo Construction LLC
 Warren & Shirley Thompson
 Endowment*

Warren & Shirley Thompson
Endowment*
 Megan Thompson
Sean & Tiffany Trotman
United Methodist Church Women,
Colton
Urology Specialists Doctors
Diane Vandekieft
Laurie VanDenHoek
 Michael VerWey & Alicia Collura
 Charitable Fund*
Michael VerWey & Alicia Collura
Charitable Fund*
Bud Walling
 Jody Weinkauff
Tim & Brenda Welbig
 Grace & Larry Wellman
 The Wellmark Foundation
 Ronald Williams
 Richard & Sharon Wilson
Jeanne Wold
 Nancy Worland
 Carl Youngdahl
 LouAnn Ziegler
LouAnn Ziegler

\$100 +

“As Seen on TV” Christmas Party
 Allen & Deborah Abbas
 Thomas Achin
 Annette Adams
 Stanley Adams
 James Adkins
 Jean Ahlers
 Beth & Greg Amble
 Carol & Perry Amussen
Carol & Perry Amussen
 Janet & Denis Andersen
 Brent Anderson
 Jodie Anderson
Joe & Karen Anderson
Tom & Carol Anderson
Architecture Incorporated
 Aaron & Lisa Asmus
 Nancy Ausland
 Auto Owners Insurance
Avera Heart Hospital
& North Central Heart
 Avera Heart Hospital
 & North Central Heart Employees
Arla Baker
 Jean Baker
 Jenny Baker
 Linda Baker
 Richard & Linda Bakken
 Mark Balcer
Bartlett & West
 Dauretta Bartunek
William & Shirley Bauer
Brian Bauers
 Dee Baysinger
Paige Beck
 Jerald & Cheryl Beckler
 James Beckwith

Tammy Benedict
Bruce Bennett
 Ronald & Leetta Bennett
Benton Lutheran Church WELCA,
Crooks
 Bethany Women of the ELCA, Hurley
 Todd & Brenda Bethke
Kendra & Ronn Beyer
 Jeremy & Susan Bill
 LaVern Bills
Judy Bittner
 Gary & Michelle Black
 Robert & Jeannie Blackman
Norman & Melanie Bliss
Family Fund*
 Maggie Bloom
Cheryl & Allen Boese
 Stewart & Vicki Bofenkamp
 Michael & Bette Bonjour
 Karen Bonte
Book & Thimble Club
 Jim Bork
 Thomas & Amy Bosch
 Rob Brandner
Rob Brandner
Brandon Valley Baptist Church
 Jenna Brandt
Gary Brendel
 Willis Brill
 Marsha Broadbooks
 John Brockelsby
Brooklyn Casino
 Suzzette Brown
Vicki Brown
 Bruce Brugman
 Builders Club—West Middle School,
 Rapid City
Bill Bunkers
 Silvia Burdine
 Jackie Burggraff
Judith Burk
 Robert Cady
Canton Lutheran WELCA
 Raquel Cardona
Alyssa Carlson
 Danielle Carlson
 Steve & Helene Carlson
 Torey & Micah Carlson
 Century Club-Volga
Karen Chesley
 John Chicoine
 Judi Christensen
 Jeff Christenson
 Donna Christopherson
 Lindsey Clark
Phyllis Clark
 Thomas & Betty Clark
 Dr. Dennis & Joan Clarke
 Marilyn Clauser
 John & Kathryn Clemenson
 Kathryn & Paul Clinton
 Carolyn Conn
 Deb Corkill

Tom & Karen Cota
 Jon-Eric Cox
 Julie Crang
 Kara Cushman
 Nicole Dahm
Dakota Lettering
 Stephanie Dean
 William & Dawn Degen
 Machel DeJong
 Delaware Women's Ministries,
 Lennox
 Garry & Johanna Denker CPA
 Mike Denning
 Dental Care Associates
 Tammy & Chris Dexter
Carissa Dice
Catherine Dignam
Lon Dominick
 John Donahue
 Lorella Donlin
 Celia Doolittle
 Brian & Nadine Dormaier
 William & Barbara Doshier
 Dean & Donna Doss
 Marlys Drewes
 LeighAnn Dunn
Mark & Barbara Dykstra
 Andy & Pat Dziadek
 Thomas & Connie Earley
Gregory & Mary Edeen
 Jordan Eich
 Dave & Jan Eiesland
Andrea Eisenberg
Empire Riders
Kevin & Jill Engelhart
 Melinda Engstrom
 David Enke
David Erickson
Eugene & Betty Erickson
 Gene Eulert
Lorri Fancher
 Jay Febus
 Teresa Feucht
 Donald Fickbohm
 Fred Finch
**First Lutheran Church,
 Valley Springs**
First United Methodist Church
Rachel Circle, Sioux Falls
 Wayne & Melanie Fischer
Barb & Gary Fish
Tim & Kathy Fitz
Leif Fjellestad
 Tricia Fjerestad
 Steve & Mary Helen Flanery
 James & Jodi Fleming
James & Jodi Fleming
 Kelly Fleming
 Beth Flier
Carol Flynn
 Kara & Leo Flynn
Kelby & Janis Fode
 Gabrielle Folsom

Gerald Foster
 Jill & Michael Foster
 Four Seasons at Orlando HOA
 Roger & Stephanie Frackman
Thomas Frederick
 Vickie Friece
 Dale Fuglsby
 Kayla Galliger
Chris Gammers
 Emily Geraets
 Michael & Carla Gibson
 Mark & Margaret Glanzer
Bob & Cherie Goehring
 Gregg & JJ Gohl
 Diane & Sid Goss
Grace Reformed Church
Women of Grace, Corsica
 Diane & Tom Gray
 Micaela Greenfield
 Mark Griffin
Mary & Perry Grimme
 Kelley Groff
 Michael & Julie Grossman
 Robert & Sheila Gunderson
Tammi & Jay Gunderson
 Gustafson Builders
 John Gustafson
 William Hacker
 Madison Haiar
 Cheri Haight
 Shirley & Frank Halligan
 Liz & Randy Hamburg Fund*
 Jeannette Hamilton
 Bradley & Jean Hansen
Bruce & Lori Lea Hanson
 Denise Hanson
 Shelley & Gary Hanzen
 Charlotte Harr
 Kathleen Harris
 Alan & Linda Hartman
Alan & Linda Hartman
Robert & Linda Hartmann
James Hartung & Patricia Jagoe
Loren & Dorothy Hass
 Linda Hathaway
 Chris Haugen
 Stephanie Haukos
 Judith Haushalter
Gladys Hawke
 James Hay
 Brenda & John Hayne
Ken & Diane Headrick
 Dan Heesch
 Peggy Heidgerken
Joan Heifner
 Susan & Dennis Helder
Kathy & Douglas Heilman
 Richard & Nancy Hemming
 Marvin & Karla Herr
 Deb Herrmann
 Sharon Hess
 Andrew & Heather Hewitt
Dixie Hieb

Darlene Hillmer
Hilltop United Methodist Church
Women, Sioux Falls
 Kate Hlushak
Terry & Kathleen Hofer
 Verlyn Hofer
Marlys Hohman
Darren Hokanson
 Leah Holder
 Margot Hood-Rogers
Blake Hoogland
 Beverly Hoover
 Boyd & Dody Hopkins
 Stuart & Amy Horsted
 Eric Hotz
 David & Mary Howard
 Becky Hruby
 Douglas Hruby
Hudson Lutheran Church WELCA
 Mike & Cindy Huether
 David & Kimberly Huff
David & Kimberly Huff
 David Hufford
 Kenneth Hunter
 Daniel & Sara Hutchinson
 Brian Hutchison
 Brenda Ireland
 Kelsey Jablonsky
 Debra Jacobsma
 Nancy Jacobson & Ernie Grieme
 Jacquie's Fund*
Jacquie's Fund*
 Claire Jansa
 Erin Jansa
 Ryan & Julie Jansa
 Tom & Elizabeth Jansa
Carrie Janssen
 Gayle Janzen
 Dennis & Janelle Jarabek
 Charitable Fund*
 Greg & Lisa Jasmer
Judy Jasper
 Darla Jenness
 Douglas & Dawn Jensen
 Juhl & Lori Jensen
Lee & Kathy Jensen
 JMJ Caseworks
 Erik Johansen
Chad & Julie Johnson
 Erin Johnson
 Jean Johnson
 Laura Johnson
 Roger & Judith Johnson
 Sherri & Blake Johnson
 Steven & Becky Johnson
Dr. Tom & Michele Johnson
 Toni Johnson
 Travis Jones
 Paul Jorgensen
 Jeff Justesen
 JVN Properties LLC
Jacqueline Kaddah
 Daniel Kaiser

Ty Kaiser
 Laura Karn
 Jeanne Kavanagh
Pam Keller
 KGG LLC
Thomas & Catherine King
Timothy & Jane Kinsella
 Erin Kitt
 Carmen Kitts
 Jeffrey Kitts
Aaron & Cheryl Kjose
 Aldon Klaassen
Aldon Klaassen
 Nathan Klaus
Geneva Kluck†
 Marilyn Knapp
 Geraldine Knuth
 Richard Koch
 Eric & Clarinne Koepp
 Linda Kott
 Cathy Kramer
Cathy Kramer
Staci & James Kropuenske
Jill Kunstle
 Matthew Laible
 Edward & Sherry Lake
Lands Lutheran Ladies, Hudson
Charles & Judy Lapka
 Brady Larsen
 Travis Larsen
 Charlene Larson
Charlene Larson
 Gordon Larson
 Gregory & Terrie Larson
 Sandi Larson
 Amy & Jon Lauck
 Rachel Lawhorn
 John & Michael Lawler
 Faye & Bruce Lee
 Derrick Lehto
 Maria Leon Francisco
Carol Lerdal
 Mary Lerdal & Patrick Badiuk
 Karen & Paul Leslie
 Marlys Lester
 Elizabeth & Jay Lewis
 Philip & Barb Lewison
Gerry & Val Liesinger
Lincoln High School
 Stephanie Lind
 Vernon & Donna Lind
Nick & Darcy Litzen
Bonnie Livingston
 Keely London
 Kathleen Lone
 Peter & Antoinette Loving
 Edward & Laura Lueck
 James & Kathleen Lunder
Roxana Lupu
 Steve & Roxanne Lynch
 Pamela Madsen Fund*
 Lisa Maguire
Bev Mann

Brent Mannes
 Louis Manus Jr.
 Dan Mara
 Marco
Marcus Walgrave Corporation
 Don & Janette Marker
 Donna Martian
 James & Kara Mathis Jr.
Lynette Matzen
Annette Matzner
Lynne McCarthy
 Margarete McCarthy
 Ryan & Rebecca McKeever
Marie McKittrick
 Jonna Meehan
Leon & Linda Meiburg
Lori Meier
 Jamie Meng
 Denny Mentele
 Sarah & William Meredith
 Melissa Merry
 Cheryl Mesler
 Messiah Lutheran Church WELCA,
 Flandreau
 Robert & Ruth Metcalf
 Ann Metli
 Dennis & Tammy Mettler
Patricia Mettler & Konney Larwood
 Larry & Dorothy Meyer
 Marella & Ed Miedema
 Quinten Miklos
 Jim & Dorothy Miller
 Todd Miller
Minnehaha County
Family Violence Council
 Brad & Tarri Minor
Rick Mitchell
 James Monson
 Elaine Moore
 Micheel Moore
 Mark & Michelle Mordhorst
Denise Moriarty
 Beverly Morris
Dave & Joanne Morton
Marilyn Moser
Roger & Linda Mousel
Kari Mulder
SueAnn & Patrick Mullaney
 Jeanne Mulvihill
Jerry & Anna Mundt
Joseph & Cindy Murphy
Greg & Cindi Mutchelknaus
 Bonnie Myrliie
 Judy Nagel
 Ralandi Naglestad
 Bryan Nelson
 Carol Nelson
 Craig Nelson
 Cynthia Nelson
 Duane & Lynn Nelson
Merri & Henry Nelson
 Erv & DeMaris Nesheim
David & Faye Nissen

Gre Nosbush
John Novak
Jennifer Noyes
Kurt Nussbaum
Duane O'Connell
Robert & Kristine O'Connell
Robert & Kristine O'Connell
Doris O'Dea
Laurie Odeen
Chad Olsen
Brenda Olson
Lanny Olson
Mark & Sharon Olson
Rob & Laura Olson
Lisa Orban
Elaine Ortmeier
Aaron Otten
Melissa Otten
Audrey Otto
Luann Ouellette
Betty Overcash
Kelly Oxender
Paceline Accounting Group LLC
Palisade Lutheran Church,
Valley Springs
Palisade Lutheran Sunday School,
Garretson
Gretchen Palmer
Freeman Park
Dennis Parker
Samuel Parker
Aidan Paulsen
Peace Lutheran Church, Rapid City
James Pearson
PEO Chapter BD Sisterhood
Keith & Jessica Perkins
M. Frank & Illey Peteret
Heather Petermann
Christina Peters
David & Rebecca Peters
Jason & Deanna Peters
Shawn Petersen
Angi Peterson
Laura Peterson
Seth Peterson
Steven & Gina Pfeiffer
James Phillips
Vilo & Marlys Pietz
Alice Pike
David Pollard
Pomegranate Market
Steven & Meredith Powell
Paul Powers
Cheryl Priesz
Principal Financial Group
Sally Putzke
Patrick & Marcia Quinn
Steven & Marilyn Quissell
Kendra Ractliffe
Janice Radach
Janice Radach
Amy & Derek Radke
Taylor Rapchak

Robert & Jody Rasmussen
Cheryl Rath
Bryce Rausch
Ronnie Reed
Fred & Carol Rehder
Brian Reid
James & Diane Reiners
Patty Reistroffer
Wayne Reit
Dan & Rita Renner
Renner Lutheran Church
Collin Reynolds
Chuck Rezek
Kerry & Justin Rhodes
Lori Rickenbaugh
Jeff Riddle
Lavonne Riechers
Jimmy Roberts
Richard Robertson
Shane Roby
Sheri Roelfsema
Mary Gayle & Emmet[†] Rogers
Romsdal Women's Group, Beresford
Lisa Rose
Steve & Amy Rufino
Rylar Properties
Richard & Joan Saathoff
Salem Mennonite Church, Freeman
Linda Saloum
Sanford Health
R.F. Sayre & Associates Inc.
Richard & Lois Sayre
Keith & Ann Schaeffbauer
John Schanberger
Sandra Schar
Josh Schmidt
Wes & Ada Schmidt-Tieszen
Ronald Schmit
Doug Schnabel
Jon & Stephanie Schnider
Craig & Nancy Schoen
Craig & Nancy Schoen
Krystal Schoenbauer
Ronald & Renea Schoenfelder
Taylor Schoenfelder
Joyce & Steve Scholten
Christian Schoppert
Michele & Brian Schuldt
Wayne & Loretta Schultz
Nathan Schwab
Rand & Mignonne Schwebach
Amber Schwiesow
Donna Scott
Jim Self
Sandy Severson
Sandy Severson
Shalom Lutheran Church,
Harrisburg
Donna Shay
Dallas Shearer
Kim Shoup
Michael Shumaker
Kent Sinclair

Sioux Falls Charity Giveaway
Sioux Falls Stampede Hockey Club
Deb Sittig
Rosemary & Allen Smit
Natasha Smith
Solventum
Judy & Samuel Sommers
Sherran Sommervold
John Soost
Dale Soper
Tracey Sotelo
Kevin Sowers
Deborah Spezzano
Sports Center
Robert Sprecher
Sheila Spreitzer
Greg Spurlin
St. Boniface Altar Society
Todd & Erica Stahl
Myrna Stanley
Galen Steele
Rose Steffen
Glenda Stene
Dale & Carol Stephenson
Kathy Stiefvater
Wayne & Palma Stombaugh
Kelly Storhaug
Gladys Storm
Jeffrey & Reneece Strand
Arvid Swanson PC
Lynn Swanson
Megan Swanson
Jackie Swanstrom
Sarah Sweet Behrendt
Vicki Sweet
Dick & Kathy Sweetman
Heather Taylor
Wes & Jane Teal
Merlin Tebbe
The Sunshyne Fund*
Jennifer Thom
Judy & Lee Thompson
Judy & Lee Thompson
Scott & Laurie Thorson
Lynette Thum
Adam & Jana Timmerman
Dr. Gary & Gena Timmerman
Mike & Robin Tobin
Shelly Townley
TPF Software India Pvt Ltd
Mary Travnicek
Sam Trebilcock & Elizabeth Lewis
Dennis Treiber
Trophy Trotters 4H Club
Rick & Jo Turgeon
Linda Twedt
Beverly Twogood
UBS Matching Gifts Program
US Bank Foundation Employee
Matching Gift Program
USF GIVES Matching Gift Program
Paul & Karen Van Bockern
Matthew & Michele Van Buren

Michael Van Voorst
Samuel Van Voorst
Wyatt & Kathryn Van Zee
Marlys VanBruggen
Mark & Nancy Vanden Berge
Norma & Lemar VanHeuveln
Shirley Vehle
Ruth Vickers
Mary Vickery
Jason Virtue
Adam Vogel
Dale & Annette Vollan Kerber
Janet Von Auer
Nicholas Wackel
Betty & Thomas Wagner
Bill Wagner
Forestt & Laurie Wagner
Rachel Walling
Delmar Walter
Marie Walter
Tanner Wangness
Teresa Ward
Roger Wardlow
Hugh Watkins
Rick & Mary Weber
Rick & Mary Weber
Larry & Marlene Weires
Ron Weiss

Elizabeth Wells
Bradley & Laura Wenande
Ronald & Peggy Wencil
Donald & Harriett Wendt
Jeff & Linda Wepppler
Gary Werning
Matthew Westendorf
Janis Weyrich
Tonia White Bear Claws
John & Deanna Wiarda
Jane Wick
Angela Wiederich
Jim & Karri Wiederrich
Thomas Wilka
Dr. Andrew & Paige Wilson
Grace Wilson
Theresa Wingen
Tom & Shan Wintersteen
F Herbert & Sandra Wiswall
Bart & Barbara Workman
James & Penny Woster
Curtis & Darlys Zaske
Lian & Jay Zea
Anthony Zebroski
Steve Zellmer & Katherine Kinsman
Joe & Kristen Zueger
Annette Zwemke



**SIGN UP FOR
OUR EMAIL
NEWSLETTER**

A LETTER FROM HOME

And we'll send you monthly heartwarming stories about the children and families we serve throughout our CHS services.

Scan QR code and sign up today!

Visit our website at chssd.org or call **Staci Kropuenske** at 605.330.7387.



The following list shows a few examples of how restricted gifts were used at CHS:

- **Electronic smart boards for classrooms**
- **New Beginnings baskets for families at Children's Home Shelter for Family Safety**
- **Recreational outings and trips**
- **Birthday and Christmas gifts**
- **Creating a new employee growth and development specialist position**
- **Capital Campaign pledges and gifts**

RESTRICTED GIFTS

Gifts Given January 1–December 31, 2025

These gifts were given to purchase a specific item or service, or to be used for a designated purpose. Gifts supporting Children's Home Shelter for Family Safety are noted in **bold** type.

\$5,000,000
Seed for Success Foundation

\$2,000,000
Sanford Health

\$1,000,000
Miles & Lisa Beacom

\$750,000
David & Deanna Emery

\$500,000
Cameron & Susan Stokka

\$480,000
Snake River Homesites LLC

\$300,000
Gail & Delores Miller Fund[§]

\$250,000
Janet Kahler
John & Kay Rozell

\$150,000+
Dennis & Lizette Aanenson
South Dakota Elks Association

\$125,000
Eric & Terri Lee

\$100,000
Aanenson Family Foundation
Justin Cutler
Richard† & Sharon Cutler
Larson Family Foundation
Dave & Barb Schmidt
Peg Seljeskog
Scott & Ronna Sletten

\$50,000+
Meg Warder & Justin Pickar
Scott & Jody Barbour
Steve & Mary Helen Flanery
Kucera Family Foundation
Mark & Kristol McKie
Kent & Cathy Mundon
Erv & DeMaris Nesheim
Charles & Lois Ann Rose
Siblings of Cindy Walsh
Roger & Diane Wilson

\$25,000+
3DL Services LLC
Julie & Curt Anderson Friesen
Matt & Sarah Benne
Harold & Helen Boer
Jan & John Brewer
F. L. Clarkson Family Foundation

Darla & Doug Crown
Amy & Marty DesLauriers
Timothy Dougherty & Karen Schreier
Michael Day & Diana Dufur-Day
Steve & Kris Egger
First Dakota National Bank
Dr. Charles & Kathryn Hart
Blake & Marcia Hoffman
Tom & Melissa Howes
Jack & Vianne Kucera
David & Valerie Mickelson
John Nooney
Tom† & Michele Olsen
Max Patnoe
Jacob Quasney
Tyler & Sophia Schwan
Greg & Melissa Schweiss
Scoular Family Charitable Fund*
Scott & Ronna Sletten
The Tomar Fund*
Bob & Marilyn Van Demark

\$20,000+
Harold & Helen Boer
Harvard Integrations
Dr. Bob & Marilyn Van Demark

\$15,000+
A&B Business Solutions
Gustafson Builders
Independent Insurance Agents
of Rapid City^o
Jackson Dental Professionals
Jeffrey Meyer
Patrick Miller†
Glenda Stene
Clay & Cheryl Trulson

\$10,000+
American Bank & Trust
Robert Baker
Linda Baker
Stacey Denke
Dream Design International Inc.
Jack & Gina Hopkins
Ken & Marita Karels
Kieffer Sanitation
Lampert Properties
Bill & Lorraine Lindquist
Madsen Family Education Scholarship
at CHS Endowment*
Jack & Betty Marsh
Dustin & Sarah Morrison
Jeff & Katrina Partridge
Pipestone

Sheldon Reese Foundation
Jerry & Deb Soholt
Bobby & Genae Sundby Family
Tom & Sharon Warner
William & Sherry Wood

\$5,000+
Adam & Kristina Aasen
Action Mechanical Inc.
Black Hills Caregiving
Bluestem Capital Company LLC
Cherril Brown
June Clark Endowment Fund
CoTrust Bank
The Delta Air Lines Foundation
Kara & Leo Flynn
Drew & Deirdre Goodwin
Hills Septic Service
John & Vickye Hoffman
Boyd & Dody Hopkins
Todd & Maria Hopkins
Tom Hurd & Sonya Bernardino
Tommy & Marian Ibrahim
Insulation Enterprises Inc
Phil Lampert & Sue Knudtson
Luke & Brittany Lindberg
Lloyd Family Charitable Fund*
Madsen Family Creative Arts Education
at CHS Endowment*
Mac† & Bev McCracken
Maguire Iron Inc.
Neugebauer's Jewelry
Design & Service
Kimberly Nooney
Mike & Janice O'Connor
Sean & Caresa O'Connor
Joel & Lisa Porch
Tim & Kim Rensch
RESPEC
Jessica & Thomas Ries
Rotary Club of Rapid City Rushmore
Vern & Ruth Schaefer
William & Jill Schuneman
Greg & Melissa Schweiss
Lynn & Matthew Simmons
Dr. Robert & Maureen Suga
Chris & Kristen Thorkelson
Tom & Crystal Van Wyhe*
Kenneth & Cathy Voge^o
Jo Anna Warder
Dr. John & Dorina Weigelt
Peary Wilson
Bill & Judy Wittrig

\$2,500+
Charles & Jill Arbeiter
Black Hills Animal Hospital PA
Black Hills Community Bank
Black Hills Rubble Management
Black Hills Shooters Supply Inc.
Black Hills Tire
Kent & Peggy Brugger
CARSTAR Collision Center
Conrad's Big C Electric
Costello Porter Law Firm
Dakota RV
Diesel Machinery Inc.
Dr. David & Julie Ermer
Farmers Insurance and Financial,
Dave Schmidt Agency
Fred & Kelly Folsom
Stuart Fromm MD
Gregg Fullerton State Farm Agencies
Dr. Troy & Stephanie Gust
HVAC Elements
Independent Optical
Bill & Laura Johnson
Melissa Johnson
Scott & Lisa Jones
Myles & Jeanette Kennedy
Michelle & Paul† Lavallee
Marsh McLennan Agency LLC
Kent & Marcia Martin
Ryan & Kristi McFarland
John & Carol McGrath
Mitch & Katie Morrison
Pajama Angel
Marjorie Pearman
Don & Amy Policky
Art & Maggie Russo
Sam's Club
Scul Construction Services Inc
SeaCrest Wealth Management LLC
Sentinel Credit Union
Chirag & Veronica Shukla
Sonalika Khachikian
Robert & Jennifer Stalley
TNT Homes & Construction LLC
TruStage
United Way of the Black Hills
The UPS Store
Western Legacy Foundation
Wood Builders Inc.
Xanterra Travel Collection

\$1,000+
Brian & Denise Aamlid*
Percy & Marjorie Amundson
Family Endowment*
Brett Anderson
Avid4 Engineering
Bareis Engineering
Maria Bell
Dzenan & Kelsey Berberovic
William Bernhard &
Dr. Shana Bernhard
Big D Oil, Rapid City
Big Dog Excavation LLC
Diane & Bob Biver
Black Hills Energy
Black Hills Surgical Hospital LLP

Thomas & Nancy Bradsky
 Pat & Lucy Burchill
Jim & Kim Burma
 Butler Machinery
 The Campbell Lending Group
 Dr. Joseph & Amy Cass CHS
 Excellence in Caring Endowment*
 Dorothy Chronister
 Jon & Gail Crane
 Dacotah Bank
 DGR Engineering
 Equipmentshare
Andrew & Sara Erie
 Amie Estes
 Floyd's Truck Center
 Gateway Autoplex
 Donna Genora
 Dr. Don & Brenda Habbe
 Roger & Chris Heacock^o
 Justin & Jeannie Henrichsen
 Dave & Tessa Howard
 Michael Howes
 iPromo
 Marty Jackley
 Brad & Carol Johnson
 Thomas Kassube
 Caiti Kean
 Ketel Thorstenson LLP
 Knecht Home Center
 Mike & Bobbi Langbehn
 Neal & Brenda Larson
 Michelle & Paul[†] Lavallee
 David & Cindy Ledford
 Madden Family Scholarship Fund*
 Vicki Madsen Adoption &
 Foster Care Endowment*
 Madsen Family Library
 at CHS Endowment*
 Helen Madsen Endowment for
 CHS Prevention Initiative*
Mike & Karen Mahan
 Kim & Dennis McKay
 Roger Meyer
 Tim & Diane Meyer
Midco Foundation
 Tyson & Tokie Morgan
 Arun MS
 Northwest Pipe Fittings Inc.
 Omnitech Inc.
 Pac-Tech
 Michael & Shannon Paikos
 Pioneer Bank & Trust, Rapid City
 Don & Ann Platt
 Creative Arts Endowment*
 Purple Wealth LLC
 Robert & Judi Quinn
 Rapid City Police Department
 Deborah Rawlins & Ray Osloond
 Rehrig Pacific Company
Brian & Katie Reilly
 Brett & Lynne Riddle
 Ro Sham Bo Creative
 George & Donna Roberts
 Pat Roseland
 Rosenbauer Firefighting Technology
 Russell Enterprises Inc.—Olson Towing

Sander Sanitation Service
 Wayne & Gaye Sander
 Patricia Schiro
 Security First Bank
Sioux Valley Energy
 Sisson Printing Inc.
 Jeff & Lori Skinner
 Family Endowment*
 Dan & Brenda Steiner
 Kerry & Bonnie Steiner
 Paul Thorstenson
 Those Guys A.B.A.T.E.
 George Twitero & Shari West Twitero
 Van Beek Family Foundation Agency
Van Beek Family Foundation Agency
 Graham & Courtney Van Horn
 Walmart
Walmart
 Shawn & Terri Walters
 Richard & Donna Wilson
 Erin & Kristi Wood
 Ken & Kelly Wrede
 Zeisler Construction
\$500+
 Dr. Robert & Judy Allen
 Arrowhead Country Club Members
 Gary & Michelle Black
 Black Hawk Community Church
 Black Hills Badges for Hope
 Black Hills Federal Credit Union
 bluepeak
 John Brockelsby
 Jon & Karla Brown
 Buckingham's ATA Martial Arts
 & Karate for Kids
 Derek Bueltehl
 Buffalo Wild Wings
 Bill & Lynne Byrne
 Carsley Golf
 Catholic Daughters of America
 St. Rita Court No. 916
 Clemmons Asphalt Maintenance
 Jay & Angela Crossland
 Dennis & Linda Daugaard
 Lorilei & Jay DeSilva
 David & Kimberly Dolan
 Richard & Rachel Edelen
 Edward Jones-Kyle Bargmann
 Cy & Sandy Farner
 Marcia & Troy Finck
 First Western Federal Savings Bank
 Tom & Ann Marie Fullerton MD
 GenPro Energy Solutions LLC
 Gordon Rees Scully Mansukhani LLP
 Patrice Graham
 Rob Grunendike
 Sam Gunderson & Sheri Baine
 David & Maureen Gustafson
 Mike & Lori Hahn
 Gary & Carmen Hansen
 Nolan Hanson
 Marlene Heisterkamp
 Colleen & Rick Hewitt
 Richard & Darlene Hoeye
 H-S Precision
 Paul Jensen

Craig Johnson
 Roger & Erin Johnson
Junior League of Sioux Falls
 Kieffer Family Dental PC
 Amy Koenig
 Dave Kulish
 Scott Lee
 LEI
 Links to Literacy Endowment*
 Liz Lloyd
**Madsen Family Library at
 Shelter for Family Safety***
 Wendy McGowan & Wade Lampert
 David Loving Memorial Fund*
 MG Oil Company
 Alan & Julie Michalczyk
 Dr. Isaac & Holly Morgan
 Gary & Susan Myers
 Bruce & Kim Nearhood
 Susan Nelson
 Mark & Shannon Niemeyer
 Northwest Pipe Fittings Inc.
 Employees
 Pacific Steel & Recycling
 Timothy & Rhonda Paris
Timothy & Barbara Patterson
 Robert & Kathleen Paul
 Angela Poches
 Karen Proell
 Rapid City Professional Hockey LLC
 Rapid Hills Construction LLC
 Rapid Spa
 Adam Ray
 Daryl & Ginny Reinicke
 Brian & Brittany Richman
 The Rushmore Hotel & Suites
 Robert & Stacey Sharp
**Sioux Empire United Way
 Sioux Valley Optimist Club**
 Matthew & Erin Smith
 Al Spreizer
 Sun Surety Insurance Company
 Marcia & Randy Taylor
 Rob & Amy Trask
 Thomas & Micah Worsley
 The James Younger Gang
 of Northfield, MN
\$250+
 Robert & Kimberly Baker
 Black Hawk Community Church
 Ladies Aid
 Josh Campbell
 Laurie & Loralie Chamberlin
 Mari Daly Hasby
 James Dodson
 James & Amy Donohue
 Miriam Dunmire
 Dana & Kristi Foreman
 Carey Gardner
 Scott & Shelby Gikling
 Michael & Marnie Gould^o
 Lori Guymon
 Donnie Hambek
 HillsView Dental PLLC
 James Huff

Todd Hyronimus & Kathryn Rich
 James & Judith Johnson
 K & O Property
 Management & Rentals LLC
 Darrel & Deborah Kjerstad
 Robert & Julie Kriese
 Aric Lopez
 Lou Madsen
 CHS Beautification Endowment*
 Leslie Magnusson Hildyard
 Paul & Connie Matzner
 Harry & Gail McKane
 New Beginnings Faith Church,
 Sioux Falls
 Jesse & Jolynne Niemeyer
 Dr. Michael & Karen Pekas
 Kristie & Adam Pequette
 Pixel Fire Marketing LLC
 Steve & Kathy Sanford
 Cody Schreiber
 William & Cheryl Schreier
 Dr. Willis & Patricia Sutliff
 Randy & Lynn Taylor-Rick
 The Marina at Sheridan Lake
 Callie Tysdal
 David & Nancy Van Holland
 Patrick & Melissa Wood
\$100+
 Janet & Denis Andersen
 D Austin
 Larry Baker
 Greg Balvin
 Stephen & Eva Bareis
 Mark & Claudia Barry
 Helena Bauer
 Mike Baumann
 Steve Beardsley
 Michael Beck Jr.
 Bide-A-Wee Club Lead-Deadwood
 Amy Blum
 Brad & Jessica Bookbinder
 Missy Bueltehl
 Mark & Betsy Carbo
 Bob & Beth Chalberg
 Connie Colwill
 Paul & Mary Ellen Connelly
 Ron Conrad
 Nick & Sara Crank
 Betty & Steve Crim
 Mark Crosswait
 Tracy Dahl-Webb
 Kevin & DeVee Dietz
 Dan Earley
 David & Sheli Ellenbecker
 Michael Ellender
 Elaine Emery
 Donald & Lori Enders
 Gene & Martha Fauth
 Dr. Michael & Kathleen Fiegen
 Pastors Larry & Kathy Forristall
 Justin & Sammi Gartland
 Alan Gease & Heidi Bell Gease
 Chad Gollnick
 Sonia Griebl
 Ben Grupe
 Sean Hall

Kathleen & Alan Haney
 Peter Healy
 Josh Holle
 Margot Hood-Rogers
 Jack & Mary Jacobs
 Greg & Lisa Jasmer
 Lynn & Scott Kendall
 Todd Kenner
 Vincent & Valerie King
 Kim Ladd
 Jennifer Larson
 Jesse Lilleskov
 Doug & Penny Lind
 Lloyd Companies
 Brenda Ludens
 Mike & Cheryl Lynde
 Mike Maguire
 Matt Maufort
 Josh McGillvrey
 Jeffrey & Rachel Menkens
 Craig & Elizabeth Miller
 Mary Ann Myers
 Sid Newstrom
 Donna & Richard Newton
 Debra Niemi
 Dr. James & Carol Oakland
 Dr. Michael & Deborah Olson
 Kevin & Shannon Osborn
 Susan Osthus
 Warren & Sandy Oyler
 Linda Peterson
 John & Julie Pierce
 Jason Rearick
 James Reimnitz
 Steve & Amy Rufino
 Robert & Audra Saylor
 Steve Schacht
 Dan Scheurer
 Margaret Schick
 John Schubaurer
 Elizabeth Schuldt
 Jessica & Tyler Sever
 Missy Sheesley
 Kristina Simonds
 Jeremie Slagle &
 Jill Grevlos Slagle
 Patricia Smith Peal
 Clark Sorenson
 South Canyon Lutheran Church
 Piecemakers, Rapid City
 Patrice Steinman
 Doyle & Arlene Stern
 Larry & Mary Stevens
 Dempsey Tapley
 Michael Tilles
 Tucker & Brandi Tonkel
 Davis & Grainne Trosin
Joshua & Cassandra Viet
 William Webb
 Ryan Webster
 Phil Welling
 Robert Wessel
 Austin & Jessica Willuweit
 Kevin & Laurie Wohlleber
 Tim & Sandy Wulf
 Robert & Charlene Zylstra

ENDOWMENT GIFTS

Gifts Given January 1–December 31, 2025

Gifts and pledges listed include designated endowment to Children’s Home Society or one of its services.

\$15,000 +

Glenda Stene

\$12,000 +

Charles and Lois Ann Rose–
Children’s Inn Fund*

\$5,000 +

James Dodson

\$2,500 +

Glen & Carla Eng

\$1,000 +

Mavis Amundson
Richard & Darlene Heinrich
Cole & Laura McClung
Mark & Sandy McClung
Thomas & Marilyn Novotny
Don & Ann Platt
Creative Arts Endowment *

\$500 +

Jeff Denison
Todd & Pamela Sorensen
Brooke & Dan Wegener

\$100 +

Debra Campbell
Paul & Mary Ellen Connelly
Colin Fitzsimons
Dave & Jan Grage
Martin & Jan McDonald
Mr. & Mrs. Gene Siebert

WORDS FROM AN EMPLOYEE

This is an excerpt from a resignation letter sent by a staff member who left her job at Black Hills Children’s Home due to a military relocation.

Reflecting on my two-plus years with Children’s Home Society, I am filled with profound gratitude. This role has been one of the most formative experiences of my professional life, teaching me the delicate balance between therapeutic structure and authentic empathy, and the critical importance of consistency in building trust.

The most impactful moments, however, were not learned from a manual but from the residents themselves. Observing a youth transition from reactive defiance to employing practiced self-regulation techniques taught me about the human capacity for change. Witnessing a previously withdrawn resident begin to articulate their needs and build tentative, healthy peer relationships demonstrated the profound power of a safe environment. These instances, and many others, are a testament to the resilient spirit of the children we serve and have taught me more about hope and perseverance than any other experience.

I am also incredibly thankful for the exceptional team at CHS. The mutual respect, clinical collaboration, and immediate support during challenging situations were foundational to our collective success and to my own well-being and professional growth.

–Onise Civil, former Residential Youth Counselor, BHCH

8TH ANNUAL DRIVE OUT DOMESTIC VIOLENCE

FUELED BY VERN EIDE MOTORCARS



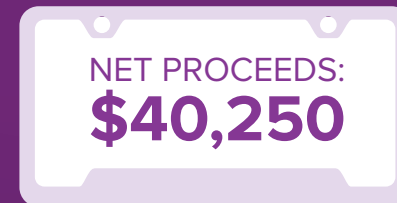
This campaign is designed to create awareness of domestic violence and generate funds to support victim services.

DriveOutDV.com



More than 800 much-needed personal care items were collected at local Sioux Falls and Harrisburg Lewis Drug locations.

Event Date: July 2025



DESIGNATION:
Children’s Home
Shelter for Family Safety
Program Support

**THANK YOU FOR
YOUR SUPPORT!**

Title Sponsor
Vern Eide Motorcars

Pedal to the Metal Sponsors
Harold & Helen Boer
Marsh McLennan Agency
Modern Woodmen of America/
Joseph Sztapka
Rosenbauer Firefighting Technology
Showplace Cabinetry

Pace Car Sponsors
CNA Surety
Culvers

Media Partners
Dakota News Now
Midco
Results Townsquare Media
VVI

Other Event Support
Lewis Drug, Sioux Falls & Harrisburg
Tom & Jean Nicholson

Hope is Stronger than Fear
44 clothing items sold



MAKING A DIFFERENCE FOR GENERATIONS

DoubleTree by Hilton, Rapid City

Event Date: March 1, 2025

NET PROCEEDS: \$91,211

DESIGNATION:

\$11,923—Children’s Home Child Advocacy Center
\$79,288—Children’s Home Society Rapid City Campus



**Children's
Home
Society**

OF SOUTH DAKOTA

THANK YOU TO OUR DONORS, SPONSORS & VOLUNTEERS!

Presented by

Rotary Club of
Rapid City Rushmore
Xanterra Travel Collection

Double Titanium Sponsor

Dream Design International Inc.
Janet & Deonne Kahler

Titanium Sponsor

Riddle's Jewelry

Beverage Sponsor

Black Hills Caregiving

Entertainment Sponsor

Rotary Club of
Rapid City Rushmore

Platinum Sponsors

Action Mechanical
Black Hills Energy
Black Hills Oral Surgery &
Dental Implant Center
Conrad's Big "C" Electric
Gustafson Builders/
Heavy Constructors Inc.
Hills Septic Service
Monument Health
Sander Sanitation
Scull Construction Services Inc.
Xanterra Travel Collection

Silver Sponsors

Big D
Black Hills Animal Hospital
Steven Edoff

Media Sponsors

The HomeSlice Group
Midco

Partners Protecting Kids Award Recipient

Abby Sharp & Theresa Schreiner
Children's Home Society/
Children's Home Foundation

GALA PLANNING COMMITTEE

Darla Crown,
Chairperson
Kara Flynn
Francie Fortune

Carmen Hansen
Ron Jeffries
Janet Kahler
Jeff Kingsbury

Jeffrey Meyer
Bruce Nearhood
Kim Nearhood
Theresa Schreiner

Abby Sharp
Dr. George Twitero
Shari West Twitero
Dr. Scott Van Dam

11TH ANNUAL CLEAVER'S CHEF CHALLENGE



The Cleaver's Chef Challenge is a friendly competition among some of the finest chefs in the Sioux Falls area. Each chef creates a signature dish and competes for top awards, one being the crowd favorite. This annual event has been held since 2015.

Event Date: April 3, 2025

NET PROCEEDS: \$250,000

DESIGNATION:
CHS Program Support

SPECIAL THANKS

Gold Sponsors

A&B Business Solutions
Catering by Cleavers/
Chef Tyler Honke
AAA Collections Inc
Halbach | Szwarc Law Firm

Silver Sponsors

Cask & Cork Distributing
CorTrust Bank
VeldCo
Weisser Distributing

Bronze Sponsors

The Atrium at Blue Haven
Blue Haven Barn and Gardens
Dacotah Bank
Davenport Evans Lawyers
FiveFour Training
Honke's
IS Restaurant Design Equipment
& Supply
Reynolds Construction Management

Gifts-In-Kind Sponsors

Accents Event Design & Décor Rental
Chef April
Energy Event Group
Pepper Entertainment
Red Rock Tools LLC
US Foods



THANK YOU TO ALL THE PARTICIPATING CHEFS!

Chef Peter Cobb | Sioux Valley Grille
Chef Mike Jensen | Marion Road Hy-Vee
Chef Dean Marshall | The Taco Vault
Chef Derrick Fish | Roundhouse Brew Pub
Chef Emily Wilson | Bee Loved Kitchen
Chef Steve Morehead | Avera McKennan Prairie Center
Chef Tanner Mott | All Day Café
Chef Sierra Jo Stan | The Country Club of Sioux Falls
Chef Ryan Hembree, CEC, CCA, ACE | Trail Ridge Senior Living
Chef Ryan Pederson | Minnehaha Country Club
Chef Skyer Holand | Bluestem Catering Co.

GIFTS-IN-KIND

Gifts Given January 1–December 31, 2025

Gifts-in-kind are donations of tangible items, goods or services. A few examples include Christmas presents, Easter baskets, auction items for fundraising events, consumable household goods for Children’s Home Shelter for Family Safety, event passes, print materials and media support. Children’s Home Shelter for Family Safety gifts are noted in **bold** type.

\$209,000 +
Midco

\$155,000 +
Midco

\$86,000 +
Thrive Causemetics Inc.

\$50,000 +
Results Townsquare Media

\$38,000 +
Schulte Subaru of Sioux Falls

\$20,000 +
KELO TV Stations
Rapid City School District

\$15,000 +
Jon & Gail Crane
Jerry Green
JJ’s Kicks 4 Kids Inc.

\$10,000 +
It Takes a Village

\$5,000 +
Baby 2 Baby
Black Hills Church of Christ,
Rapid City
Rose DuBois
Gateway Lounge
Knights of Columbus St. Therese
Council No. 8025

Lazy J Grand Lodge
Messiah New Hope, Sioux Falls
Monument Health
Riddle’s Jewelry

\$2,500 +
“As Seen on TV” Christmas Party
Beaver Valley WELCA,
Valley Springs
Beyond Bedtime
Black Hills Oral Surgery & Dental
Implant Center
Canby Inn & Suites
Catholic Daughters of the
Americas Court St. Christina, Tea
Comfort Cases
CrowdStrike
Dakota Alliance Soccer Club
Dakota News Now
Edward Jones Financial Advisors
The First National Bank
in Sioux Falls

First PREMIER Bank
First PREMIER Bank
Minnesota Branch
FuelUp 360
Hartford Area Optimist Club
Hermosa School
Becky Lowe’s Class
JLG Architects
Kieffer Sanitation
Michelle & Paul† Lavallee
Bonnie Marion
Sarah Miller
Donald & Paulette Montileaux
Mark & Michelle Mordhorst
Noon Optimist Club of the
Black Hills, Rapid City
Novak Sanitary Service
Plains Commerce Bank
Angela Poches
Quilters for Christ, Kadoka
Charley & Gwen Ray
Daryl & Ginny Reinicke
Scheels All Sports
Schulte Subaru of Sioux Falls
Jim & Kathy Stigle
Pastor Carli Steffes
Western Horizons Hot Air Balloons
Patrick & Melissa Wood

\$1,000 +
A&B Business Solutions
Dennis & Lizette Aanenson
Nancy Ashley
Augustana ExploSTEM
Avera McKennan Children’s Hospital
Beyond Bedtime
Black Hills Quilters Guild
Mike & Cheryl Boldt
Joyce Buehner
Canton Science/Math Classes
Carnival Americana
Central States Fair Inc.
Chick-fil-A
Chick-fil-A
Cross Fit Viable
Dollar Fresh
Ellsworth Monthly Volunteers
Five Below
Garnos Ranch
Generation Quilters

Good Shepherd Christ
Lutheran Church, Rapid City
Gunderson’s Fine Jewelry
Gary & Carmen Hansen
Karen Hofer
Howe Heating & Plumbing Inc.
Employees
J & L Harley Davidson Inc.
Shirley & Laura Johnson
KAJ Hospitality
Landscape Garden Centers
Lauriebelle Boutique
Lewis Drug Inc.
Kari Lewis
Monument Health Medical Clinic
Aspen Center Staff
New Beginnings Faith Church,
Sioux Falls
Wade Patton
Jeffrey & Leanne Paulson
Peace Lutheran Church,
Sioux Falls
Peace Lutheran Church Quilters,
Rapid City
Kara Peterson
Pastor Carli Steffes
Rockerville Volunteer Fire
Department & Sheriff’s Deputies
John & Kay Rozell
Rush Mountain Adventure Park
Sanford International
Joan Schaffer
Stockwell Engineers
Paul Thorstenson
Twiss Gallery
Katherine Van Demark
& Brian Reilly
Dennis & Nancy Van Der Weide
Monica VanDeBerg
Vibrant Body Art
Nora Wosepka

\$500 +
4imprint/One by One
Aeropostale
Arrowhead Country Club
Bob & Vivian Bailly
Beacon Center
Bear Country
Andrew Belsaas
Brandon Quilt Guild

Britza Performing Arts Studio
Catering by Cleavers
The Cato Corporation
Christmas Gala
The Church of Jesus Christ of
Latter Day Saints, Rapid City
Suzanne Crandall
Creative Surfaces
Cresten Properties
Crunch Fitness
Cummins Inc.
Dakota Regional Periodontics
Diamond Mowers
Dow Rummel Village
Sandra Ellingson
Faith Temple Church, Sioux Falls
Michelle Feuchtenberger
First Assembly of God, Rapid City
First Lutheran Church, Sioux Falls
First United Methodist Church,
Rapid City
Kara & Leo Flynn
ForeverLawn Black Hills
Ralph & Mildred Galyen
Girl Scouts Troop 44125
Dennis & Mary Green
Hansen Physical Therapy
HDR Inc.
Melinda Herbst
Richard & Darlene Hoeye
Holy Spirit Church, Sioux Falls
Kayla Huber
Jans Corporation
Jon Crane Gallery &
Custom Framing
Laura Jonio
JoAnn Keyser
Tim & Cindi Klein
Michelle & Paul† Lavallee
Living Hope Community Church,
Tea
Larry & Jackie Long
Lynch Performance LLC
Ben & Ana Marcello
Monument Health ASPEN CENTER
Dick Murphy
National Indigenous Women’s
Resource Center
David Nelson
New Day Church, Harrisburg

Northern Plains Watercolor Society
Peace Lutheran Church,
Rock Rapids, IA
Pam Peterson
Fay Ramstad
Rice Companies
Victoria Rossander
Kath & Daryl Rozeboom
Rushmore Skies Retreat
Sage Salon
Marian & Jon Scarbrough
Sensational Smiles Dentistry
Lori Shambaugh
Sioux Falls Skyforce
The Skin Institute at Rapid City
Medical Center LLP
Solidcore
Specialty Wheel & Tire Inc.
SpringHill Suites by Marriott
St. Leo Catholic Church, Canby, MN
St. Mark’s Lutheran Church,
Sioux Falls
St. Michael’s Parish, Sioux Falls
St. Therese Catholic Church,
Sioux Falls
Theresa Stahl
Steel District Restaurant Hospitality
Stewart School
Gene Swallow
Chris & Kristen Thorkelson
Trinity Lutheran Church, Canton
Tyler Baker–State Farm Insurance
Dr. Scott & Helen Van Dam
John Voight
Wells Fargo Bank SD NA
Stuart Wenzel
West Nidaros Lutheran Church,
Crooks
White’s Queen City Motors
Windsor Block Bar
Mike & Jane Wolforth
Xigent Solutions
Steve & Linda York

\$250 +
The 1880 Train
Adventures with Santa Keith
Aladdin Companies
Angel Dreams
Avera

Mark & Claudia Barry
Bartlett & West
Chris & Tracy Bauer
Beta Sigma Phi, Sioux Falls
Roseann Bierle
Erin Biwer
 Black Hills Community Theatre
 Black Hills Playhouse
 Black Hills Reptile Gardens Inc.
Kathy Boadwine
Walt & Jan Bones
Brenda Bostic
Bright Eyes Daycare
 Canopy by Hilton
 Carsley Golf
Catholic Daughters of the Americas
Court Mother Teresa No. 2510
Central States Manufacturing Inc.
Alicia Chau
 Church of Jesus Christ of
 Latter Day Saints, Rapid City
 Cimarron Label
CNA Surety
Cornerstone Financial Solutions Inc.
 Lauryn Culbertson Strand
 Culver's
 Dakota Nature & Art Gallery
The Dance Line
Brandon Dunham
Logan Eilers
 Embrace Church, Sioux Falls
Kristina Erickson
 Pam Evenson
Find Your Fabulosity
Amy & Derek Fischer
 Pastor Larry & Kathy Forristall
Connie Foss
Lizzy Fudge
Kim & Chuck Garry
Tillie Glanzer
Russel & Nel Golden
Kay Goodall
 Jennifer Greco
Briana Greenough
 Trudy & Randy Hartman
 Christine Hattervig
Cheryl Haugen
 Gary & Wanda Hermanson
 Colleen & Rick Hewitt
Madeline Hodges
Wanda Hoffman
 Sharon Hofstad
Chuck Holmstrom
IS Restaurant Design Equipment
& Supply
 Debra Jacobsma
 Mary Jeremiason
 JJ's Wine, Spirits & Cigars
Bianca Johnson
Emily Jones
Candy Koehn-Lauck & Ray Lauck
 Knecht Home Center
 Amy Koenig

Staci & James Kropuenske
 Stephen Kruse
Rae & Jane Kurth
Pam Larson
LaurieBelles Boutique
 Lacey Leichtnam Counseling &
 Psychotherapy
 LifeScape
LifeScape
 Lisowe's Lights
 LIV Hospitality LLC
 Amanda Lorbiecki
Cassandra Markman
 Carol McEntee
Carol McEntee
 Kim & Dennis McKay
Stacy & Kristi McKinney
Todd & Sabrina Meierhenry
 Dennis & Tammy Mettler
 Kristi Miller
 Miss America Organization
Kim Moran
 Kent & Cathy Mundon
 Nyberg's Ace
Barb Ostermann
Our Saviour's Lutheran Church,
Canby, MN
Panther Premier Print Solutions
Melanie & Jay Parsons
Carolyn & Rich Petersen
Debbie Peterson
Larry Plucker
Ed Poppens
John & Penny Porter
 Radiant Health
Ransom Church, Sioux Falls
 Dodie & Dennis Renner
Dave Riffey
Right At Home
Frank Russell
Jessica Salmonson
 Harlan & Bonnie Schmidt
Jodi Schwan
Second Reformed Church, Lennox
Security Savings Bank
Signature Salon
 Lynn & Matthew Simmons
Nadine Simon
Sioux Empire Ghostbusters
 Sioux Falls Flyers Hockey
Sioux Falls Stampede Hockey Club
South Dakota Air National Guard
Chaplain's Office
 Spearfish Canyon Resort
St. Katharine Drexel School
 St. Mary School
St. Michael's School
St. Paul Lutheran Church, Hull, IA
 St. Paul's Lutheran School,
 Rapid City
 St. Thomas More High School
Betty Steen
 The Furniture Mart

The Inn on Westport
 The Summit League
 Touchmark at All Saints
Jayne & Cullan Valnes
 Vervent
Walgreens
 West Nidaros Lutheran Church
 WELCA, Crooks
 West Prairie WELCA Women,
 Lennox
 Western States Fire Protection
 Susan & Ed Whillock
Joseph & Molly Wilson
 Wings Gymnastics Academy
Jay Xu
Lashaya Yellow Bear
 Zion Lutheran Church, Garretson

\$100 +
 Anders Aandahl
Brenda Adler
 Admiral Beverage Corporation
Jean Ahlers
Air Madness
 All About Travel
 Michelle Aman
Julie & Curt Anderson Friesen
 Vance & Tammie Ankrum
 Megan Archer
 Corlyn Bain
 Robert & Kimberly Baker
Julie Bean
Armela Becic
Sadie Beck
Bonita Beiningen
Margaret & Kevin Benson
Jerry & Sylvia Berg
George Berger & Deb Reid
Jessica Bernards
Joan Berry
 Nimish Bhatt
Mike Bisenius
Bishop Dudley Hospitality House
 Heidi Black
 Black Hills Animal Hospital PA
 Black Hills Bagels
 Krista Bongard
Michelle Borland
 Brych Boutique
Sandeep Bowenapally
Nancy Brand
Jeff & Janet Brekke
Jodi Brown
Michelle Brunz
Craig & Valerie Bultje
Laura Buseman
Butler Machinery
 John Cady
 Cory Carlson-Himes
Casey's No. 2343
 Catering By Dave LLC
Curtis Chapa
Yolanda Cherry
Judy Christensen

Marie Christensen
Carrie Congdon
Kelsey Cook
 Lisa Cook
Patricia Cook
Kricia Corado
 Corral Drive PTA
Nick & Sara Crank
 Custer Lutheran Fellowship Quilters
 Dakota Family Dental
Marti Dargen
Danielle Daughters
Kate Davis
Cynthia Daymon
Brandi DeBoer
Jim DeBoer
Jody DeBoer
Taya DeRycke
 Lorita Deurmier
Mary Dick
Amanda Dohmen
Sharon Doolittle
Kerry & Lori Drusch
Leslie Dunken
Mary Eide
 Elkhorn Ridge Resort & Golf Club
 Elks Golf Course
 Evon Faber
Shelly Famestad
Rocio Favela
 Teresa Feucht
 Firehouse Brewing Company
 First Bank & Trust
 First Gold Gaming Resort
 First Lutheran Church, Sioux Falls
 First Premier Bank
 First Presbyterian Church, Wilmot
First United Methodist Church,
Sioux Falls
Gen Fisher
 Tim & Kathy Fitz
 Flags & Wheels Indoor Racing
Kim Flier
Amy Ford
The Foster Network
Turner Frank
Sandy Garry
Brittnay Gerovac
Marvelyn Gilbertson
Dennis Gillooly Jr.
 Good Samaritan Society
Tom & Judy Grady
 Grand Falls Casino Resort
Casey Graves
Carol Greve
Perry & Mary Grimme
Marcia Groeneweg
Mary Groher
Deb Gruhlke
Sierra Gulbraa
 Gunderson, Palmer, Nelson
 & Ashmore LLP
Sandra Guzman

Jenny Haeffner
Patricia Hall
Jerrelyn & Torry Haman
 Robyn Hanisch
 Butch & Robin Hanssen
 Hart Ranch Golf Course
Christine Harte-Olson
Janet Harvey
Hayward Elementary School
Jill Headrick
Bill & Jolynn Hennrich
Barb Herder
 Sharon Hess
Hilltop United Methodist Church,
Sioux Falls
Lindsey Holmquest
Ardis Hovdenes
David & Mary Howard
 Hudson Care & Rehab Center
 Barbara Hyland
 Indian Creek Lutheran Church
 WELCA, Meadow
 International House of Pancakes
Interstate Office Products
Brad & Anna Jankord
Melissa Janzen
Jay Egge Automatic Service Inc.
Marcia Jensen
Emily Johnson
 Lauren Johnson
Sara Jones
Rebecca Jung
John & Theresa Jurens
Scott & Lori Kading
Sara Kaltenbach
Spencer & Julie Kaul
Julie Kelley
KeyMedia Solutions
 The Kidz Salon
Hannah Kienast
Soyoung Kim
Kelli King
Shane Kingsbury
Mary Ellen Kloiber
 Knights of Columbus, Sioux Falls
Debra Kooistra
Cathie Kramer
Cindy Krekelberg
Loren & Barbara Kremer
 KT Artistry
 Erica Kurek
Tiffany Kurtz
 Colin LaBicic
Stacy Lavin
Janice & Steven Lee
Mike Leonardo
Anna Lewis
Fred & Patricia Ligtenberg
Lincoln High School
Margaret Lindner
 Fawna Linney
 Lori's Glass Creations
Brandy Lucerio

Beverly Luitjens
Grace Lundeen
Lutheran Social Services
Rebecca Lutumba
Britney Maasch
Ella Malkin
Sarah Martens
Staci Martinez
 Massage Envy
Patricia Mayrose
Timothy McDonald &
 Heather Viergutz McDonald
Tammie McGaffee
 Harry & Gail McKane
Tiffany McKee
 Meadowbrook Golf Club
 Margaret Messerli Trottier
Leisha Mexican
 Nancy Meyer
Toni Meyer
Isabelle Meyers
Rikki Middle Tent
Beth Mielke
Vicki Miller
 Minerva's Restaurant & Bar
Minnehaha County Sertoma Club
Scott Moeller
Kate Morck
Katy Morris
Cindy Moss
Molly Murray
Mike & Shannon Ness
Barb & Dennis Nissen
Larry & Janet Noah
Kaitlyn Norfolk
 North Point Trust Company
 O'Gorman Students for Life
Alaina Olson
Peggy Olson
 ONE Church, Rapid City
 Open Bible School, Rapid City
Hailey Orr
Brittney Osmundson
Pamela Osthus
Helen Owens
Judy Pastrano
Jeffrey & Leanne Paulson
Liz Peck
Cathy Perryman
 Randy & Deb Petrick
 Pheasantland Industries
Kelsey Phillips
Kaiya Poll
Emily Powell
 Steven & Meredith Powell
 Eric & Laura Preheim
Destiny Prelwitz
Kylee Prins
Tami Raabe
Cindy Rahn
 Rapid City Christian Education
 Association Inc.
 Rapid City Professional Hockey LLC

Cathy & Dennis Rasmussen
Tara Ravellette
Jenny Redd
Debbie Reese
Nikki Reinsbach
 Renner Corner Locker
Monique Renville
Laura Reurink
Amy Reyes
Sidney Rhinehart
Darin & Erica Richards
Denise Richter
 Dave Riffey
Cathy Risty
 Sarah Roach
Denise Roemen-Kramer
Ny Romine
Stacy Roth
Sheri Rozeboom-Kloes
Jane & Stephen Sahly
Andrea Sauer
 Brad Saum
Vernon & Ruth Schaefer
Mark Schatz
 Scheels All Sports
April Schieler
Niki Schillerstrom
 Louis Schmeltzer
 William & Jill Schuneman
Danielle Schwantes
 Science Nutrition
Darla Selders
 Sentinel Credit Union
 Shayle Severson
 SGWS
 Sioux Falls Golf
Sioux Falls Quilters Guild
Samantha Shaffer
Taylor Sidla
 Sisson Printing Inc.
Maria Skorey
 Sky Zone
Paul & Janet Slater
Robert & Ann Sloan
Sara Snelling
Pam Soderholm
Sean & Brenda Sosa
Spirit of Truth Lutheran Church,
 Brandon
St. Dymas, Sioux Falls
St. Francis House
Matthew Stahl
Stan Houston Equipment
Autumn Steichen
Jackie Sterling
Laura Stevens
Barb Stutzman
 Jeffrey & Azure Summers
Angie Swift
Bill Swift
Nicole Talcott
 Tally's Silver Spoon
 Tandoor Bocado

Target Stores
Michelle Tarrell
 Randy & Lynn Taylor-Rick
Reannae Tegue
Art Temple
 Texas Roadhouse
 The Spa On Phillips
Andrew Theesen
Connie Thomas
Nancy Thum-Thomas
Elaine Tieszen
Mike & Robin Tobin
Mary Trella
Trophy Trotters 4H Club
Brandi Tulloh
 Donna Tunge
United Methodist Church, Geddes
Dave & Judy Van Veldhuizen
Carol Vandestroet
Nancy VanHeerde
Linda Verbrugge
 Vibrant Life Wellbeing
 Victoria's Garden
Becky Waack
Betty Walter
 Jodi Wendland
Westminster Presbyterian Church,
 Sioux Falls
Morgan Whittle
Lindsey Wickre
Lana Wiedrich
Emily Wiekamp
Helen Wilberding
 Wild Bloom Art & Design
 Wild Flower Presbyterian Church,
 Sioux Falls
Sue Williams & Greg Kohlenberg
Mark & Sandra Williamson
Lucinda & Michael Wilson
Nita Wirth
Jackie Woodruff
 Kelly Wrede
Maysen Wurscher
Bethany Yoder



A SPECIAL OPPORTUNITY

FOR THOSE 70½ YEARS OLD AND OLDER

Each spouse in a couple can make up to a maximum \$111,000 Qualified Charitable Distribution (QCD) from their own IRA, allowing up to \$222,000 per couple, to a qualified charity like Children's Home Society (CHS), without paying income tax on the gift. Any amount up to the \$111,000 per-person limit qualifies and supports the impactful work of CHS. Gifts of any value up to \$111,000 or less are eligible for this benefit and you can feel good knowing that you are making a difference at CHS. This popular gift option is commonly called the IRA charitable rollover, but you may also see it referred to as a Qualified Charitable Distribution, or QCD for short.

Learn more at: chssd.org/support

Why Consider This Gift?

- Your gift will be put to use today, allowing you to see the impact of your giving immediately.
- You may be able to use your gift to satisfy all or part of your Required Minimum Distribution (RMD), if applicable.
- You pay no income taxes on the gift. The transfer generates neither taxable income nor a tax deduction, so you benefit even if you do not itemize your deductions.
- Since the gift doesn't count as income, it can reduce your annual income level. This may help lower your Medicare premiums and decrease the amount of Social Security that is subject to tax.

Children's Home Society does not give tax advice. We recommend visiting with your tax professional to determine if this giving option is right for you.

MEMORIAL GIFTS

Gifts Given January 1–December 31, 2025

Memorial gifts are given in memory of family members or friends who have passed away. Memorial gift card packets are available upon request. Due to space limits, only gifts of \$20+ are listed. Children’s Home Shelter for Family Safety gifts are noted in **bold** type.



**JIM
BERVEN**
Friend of CHS



**VERL
FLANERY**
Friend of CHS



**VERLYN
HOFER**
Friend of CHS



**JACK
HAMILTON**
Former CHS Board Member



**PHIL
HELLAND**
Former CHS Board Member
(Emeritus Board Member)

Loren Amundson

Roger & Stephanie Frackman

Mark Amundson

Roger & Stephanie Frackman

Judge Robert Amundson

Mavis Amundson

Donna Anderson

Staci & James Kropuenske

Gayla Anderson

Roger & Judith Johnson

Beverly Armfield

Glenda Stene

Margaret Austin

Ronald Neri & Georgia Austin Neri

Tamara “Tam” Baker

Carlton & Roxanne Phillips

Roland “Neal” Barber

Dennis & Tammy Mettler

Steve Barnett

Michael & Gracia Gillespie

Gary Basso

Millie Buche

Curtis “Curt” Behrens

Leon & Linda Meiburg

Arlene Bendix

Andrew & Heather Hewitt

Peggy Berge

LeRoy & Marie Koopman

James “Jim” Berven

Ardys Berven

Darwin & Kathleen Carlson

Roger & Shirley Carter

Timothy Dougherty &

Karen Schreier

William & Kay Folkerts

Patricia Lien

Gayle & Dorothy Small

Dean & Rita Sorenson

VRS PC

Rick & Mary Weber

Herbert & Sandra Wiswall

Deb, Helen, & Maurice Biernbaum

Robert Biernbaum

Lucille “Lucy” Bixenmann

Allen & Gloria Brown

David & Jean Rave

Darold Borman

Beverly & Delmar Klassen

Betty Bottum

Wayne & Eileen Tanke

Donna Briggs

Carol Entringer Tjarks

Arnold Brown

Allen & Gloria Brown

Roseanne “Rose” Brown

Joseph & Cindy Murphy

David & Jean Rave

Thomas “Tom” Brown

John & Kay Rozell

George “Lauren” Christensen

Bob & Cherie Goehring

Phyllis Comes Flying

Dennis & Tammy Mettler

Nancy Comp

Sharon DeHaan

Lonnie Croon

Carol Entringer Tjarks

Jacobus “Jack” Dubbelde

Sherran Sommervold

Leroy “Roy” Dyce

Jolynn Dyce

Mary Ann Egan

Margaret Amundson

Emmalee Eide

Gary & Lynne Eide

Judy Eide

Tamara & Bradley Bosch

Aunt Eileen

Melvin & Doreen Ronning

Kathleen Fjellestad

Leif Fjellestad

Verl Flanery

Jeff Denison

Steve & Mary Helen Flanery

Brad & Carol Johnson

Tom Foster

Connie & Gary Schickedanz

Mary Fox

Allen & Gloria Brown

Victoria Giles

Kenneth & Judith Fickbohm

Jack Hamilton

Sue Bresee

Lyle & Jeanette Eidsness

Ellen Hamilton

John Hamilton

Steve & Susan Hauff

Desirae Hovdestad

Deb Minnich

Don & Ann Platt

Glenda Stene

Lois Hanson

Sharon DeHaan

Todd Hauge

Arnie Hauge

Elaine Hedberg

Staci & James Kropuenske

Marvin Heidebrink

Tom & Linda Bunkers

Philip “Phil” Helland

Linda Baker

Bender Commercial

Real Estate Services

Todd & Brenda Bethke

Robert & Jeannie Blackman

Thomas & Amy Bosch

Dwane & Maxine Boxdorfer

Guy & Melissa Caslin

William & Colleen Chase

Thomas & Betty Clark

Paul & Mary Ellen Connelly

Gary & Kathy Conradi

Dennis & Linda Daugaard

Merlin & Barbara Davis

Steve & Kris Egger

Carolyn Enger

Susan Evans

Gregg & JJ Gohl

Evan Hackett

Thomas & JoAnn Helland

Coleen Hohn

Margot Hood Rogers

Boyd & Dody Hopkins

Stuart & Amy Horsted

Pam & Steve Jansa

JVN Properties LLC

Amy & Chad Koehlmoos

Harlan & Judith Konrad

Lloyd Companies

Liz Lloyd

Pat Lloyd

Kathy Nordness

North Central Insurance

Paceline Accounting Group LLC

Kenneth & Suzette Reuter

RF Sayre & Associates Inc.

Emmet & Mary Gayle Rogers

John & Kay Rozell

Richard & Lois Sayre

Keith & Ann Schaeftbauer

Paul & Nancy Schock

Daniel & Erica Seabaugh

Todd & Erica Stahl

Steve & Julie Statz

Glenda Stene

Denny Thedans

Margaret Tidemann

Rachel Walling



BERNARD JACOB

Father of Clara Jacob
CHS Staff



RUTH KATTKE

Friend of CHS &
Shelter for Family Safety



KENNETH KLATT

Friend of CHS



DORIS KONO

Friend of Shelter for Family Safety



CRAIG LLOYD

Friend of CHS

Dean & Sharon Wartenbee
Rick & Mary Weber
Jim & Karri Wiederrich

James "Jim" Hendrickson
Allen & Gloria Brown

Rebecca "Becky" Hennies
John & Valoy Nordlie

Marlys Hindbjorgen
Bob & Cherie Goehring

Norman Hixson
Bob & Cherie Goehring

Patricia "Pat" Hixson
Bob & Cherie Goehring

Jeanette Hofer
Urology Specialists Doctors

LaVerne Hofer
Ryan & Rachel Tiedeman

Verlyn Hofer
Allen & Deborah Abbas
Tamara & Kevin Burke
Patrick & Nitra Doyle
Allen & Valerie Fincher
Jill & Michael Foster
Verlyn Hofer
James & Judy Jibben
Dave & Beverly Leedom
Brenda Ludens
Paul & Karen Van Bockern

Daniel "Dan" Hoffman
Bob & Cherie Goehring

Wayne Ireland
Norma Wetrosky

Michael Jackley
Marty Jackley

Bernard Jacob
Janet & Denis Andersen
Kelly Dix
Kara & Leo Flynn
Andrew & Heather Hewitt
Clara Jacob

Staci & James Kropuenske
Michelle & Paul† Lavallee
Mark & Shannon Niemeyer
Krystal Schoenbauer

Donna Jorgensen
Joseph & Cindy Murphy

Vince & Bernette Karels
Ken & Marita Karels

Ruth Kattke
Danielle Bialas
Debra & Gary Bruggeman
Diane Bruns
James & Nancy Carmody
Davenport Evans Hurwitz
& Smith LLP

Deanne DeRungs
Brittany Hamann
LaRae & Rick Hildebrandt
Jennifer & Wink Javers
Thomas Kattke
Sarah Rahn
David & Joan Strang
Robert & Patricia VanHove

Doris Kirkeby
Allen & Gloria Brown
Tom & Linda Bunkers

Natalina "Lena" Klassy
Leon & Linda Meiburg

Kenneth Klatt
Amy Burger
Catherine Dignam
Michael & Gracia Gillespie
Douglas Haugstad
Mary Klatt
Sherry & Henry Lippert
Vonda Shaeffer
Susan Weiner

Maureen Klaudt
Alan Nickles

Geneva Kluck
Diesel Machinery Inc.
Kimberly & Rodney Hanson
Jacqueline Kaddah
Michele Solfa

Leona "Lee" Knowlton
Linda Baker
Bruce & Connie Ferrie
Jane Healy

Irene Koehn
Amy & Calvin Carter
Sandy Jones
Michael & Cynthia Kline
Candy Koehn Lauck & Ray Lauck
Janice & Steven Lee

Sharon Koens
Frank Koens

Doris Kono
Gregory & Mary Edeen
M. Frank & Illey Petereit
Bruce & Lori Lea Hanson
George Holborn
Sheila & Steve Marsalek
Lynne McCarthy
Toni Meile
Troy & Nancy Naber
Glenn & Barbara Olson
Sandra Sheehan
Roger & Amy Simunek

Adrian Krogstad
Allen & Gloria Brown

Bob & Marlys Kunde
Ken & Marita Karels

Terry Larsen
David & Sharon LeBrun*

Alice Leberknight
Gustafson Builders

Paul Listul
Andrew & Heather Hewitt
Colleen & Rick Hewitt

Craig Lloyd
Liz Lloyd
Lloyd Family Charitable Fund*
Rick & Mary Weber

Larry Lounsbury
Lois Lounsbury

David Loving
Peter & Antoinette Loving

Douglas "Doug" Lund
Allen & Deborah Abbas
Susan Anacker
Barbara Campbell
Gary & Kathy Conradi
David Derner

Gail Fenske
Lisa Fisher
Pam Gillespie
JMJ Caseworks
Jim Kolda
Gregory & Terrie Larson
Gloria Lund
Jack & Betty Marsh
Patricia McMunigal
Phyllis Nelson
Brian Oakleaf
Doris Ohen
Jason & Deanna Peters
Steven & Meredith Powell
Kari Shanard Koenders
Arvid Swanson PC
S Swanson
Kent Westerman
Jane Wick
Wieman Land & Auction
Company Inc.
Carol Wulf

LeeAnn Maag
Connie & Gary Schickedanz

Helen Madsen
Bill & Lynne Byrne
Marlys Drewes
Pamela Madsen
Jan & Martin McDonald
Deb & Dennis Moritz
Rita & David Nelson
Bev Pins
Glenda Stene
Keith & Nan Venhuizen

Betty Marty
Patti Brende Nickles

Janet May
Allen & Gloria Brown

Russell May
Carol Entringer Tjarks

Barbara McCoy
Michael & Gracia Gillespie

Royal "Mac" McCracken
Sarah Sweet Behrendt
Mark & Cynthia Bennett
David Berg

Harold & Cheryl Brenden
John Brockelsby
John & Bobbi Brown
Doug & Darla Crown
Dennis & Linda Daugaard
Stephanie Dean
Lorella Donlin
Judith & Bill Duhamel
Greg Eiesland
Alan & Diane Eitrem
Melinda Engstrom
Diane & Sid Goss
Diane Gronlund
Peggy Hanafin
Pat & Randy Harer
Arnie Hauge
Sharon Hinzman
Evelyn & John Holdaway
Nancy Jacobson & Ernie Grieme
David & Wendi Johnson
Gary Johnson
Gordon Kendall
Cheri & Don Lalim
Donna Lease
Sharon Lee
Donna Martian
V & S McCarthy
Bev McCracken
Marella & Ed Miedema
Barbara Nolan
James & Tamara Nold
Lori & Todd Norby
Randi & Don Oyan
Karen Potter
Steven & Marilyn Quissell
Kerry & Justin Rhodes
John & Kay Rozell
Darrell & Karla Sawyer
Peggy & Loren Schaller
Bradley Schipper
Wayne & Loretta Schultz
Bruce & Jane Stavem
Joann & Kevin Stock
Pat & Maynard Stock
Gladys Storm
Vicki Sweet
Gregg & Kami Talcott
Shirley Trout



**DOUGLAS "DOUG"
LUND**

Friend of CHS



**HELEN
MADSEN**

Former CHS Board Member
(Emeritus Board Member)



**ROYAL "MAC"
MCCRACKEN**

Former CHS Board Member
(Emeritus Board Member)



**COLLEEN
SANFORD**

Friend of CHS and
Shelter for Family Safety



**DONNA BELLE
TALTY**

Mother of CHS Board Member
Darla Crown

Gerald & Joan Wachter
Karen Wagner
Steve Zellmer & Katherine Kinsman

Marino Melsted
Gretta Van Schepen

Gregory "Greg" Mertz
Tom & Linda Bunkers

Robert "Bob" Messner
Bonnie Postma

Charlie Metzger
Jim Bork

Linda Metzger
Jim Bork

Dale Meyer
Linda Mickalowski

Dean Middlen
Michael & Gracia Gillespie

Tanna Miiller
Staci & James Kropuenske

Bret Moe
Gary & Zelma McCormick

Ronald "Ron" Moe
Roger & Judith Johnson

Mary Moen
Ellie Marshman & Milton Mutch

Sarah & William Meredith
Lynne Zimmer

DeAnn Molskness
Roger & Judith Johnson

Eleanor Morse
Allen & Gloria Brown

Deanne DeRungs
Leonard & Lynelle Heinemann

Michelle & Jay Hojer
Steve & Lisa Jervik

Ruth Mehlhaff
Lisa Morse

Patty Richter
Adam & Jana Timmerman

Joshua & Cassandra Viet
Betty Nelson

Carol Entringer Tjarks
Don Neu

Marjorie Anderson

Joyce Nielsen
Tricia Fjerestad
Shirley & Frank Halligan

LeRoy Nielsen
Allen & Gloria Brown
David & Jean Rave

Donna Nolte
Jim Self

Tom Olsen
Timothy & Diane Baldrige
Jim & Dianna Gray
Lori & Kevin Hecht
Susan Heezen
Susan & Dennis Helder
Jack & Gina Hopkins
Shirley Krentz
Rhonda & Gregory Lofstedt
Ellie Marshman & Milton Mutch
Dennis & Tammy Mettler
Cynthia Nelson

Steven & Randi Peters
Ingrid Place
Preston Van Zee
Rick & Mary Weber

Ricky Oppold
Tex & Sheila Wright

Patty Par
Millie Buche

Beverly Parsons
Rick & Mary Weber

Merlyn "Merle" Plucker
Dawn Frioli
Scott & Lynda Hoffman
Bev McCracken

Wilmina "Mina" Poppens
Ed Poppens
Allen & Jan Schmuck

Glen Poppinga
Sharon DeHaan

Laura Pulscher
Allen & Gloria Brown

Bill Pusi
Kim Balk Phelps & Bill Phelps

Helen Pusi
Carol & Perry Amussen

Deborah Ractliffe
Kendra Ractliffe
Jeffrey "Jeff" Randall
Tom & Linda Bunkers

Ralph Redenius
Linda Mickalowski
Rick & Mary Weber

Gary Roberts
Bob & Cherie Goehring

Nancy Robison
Diana, Michael & Corrie Day

Chris Roussel
Steve & Mary Helen Flanery

Dennis Ruff
Sharon DeHaan

Georgia Rukstad
Connie & Gary Schickedanz

Colleen Sanford
Julie & Curt Anderson Friesen
Bill & Lynne Byrne
Debra Campbell
Paul & Mary Ellen Connelly
Steve & Kris Egger
Michael & Gracia Gillespie
Diane & Tom Gray
Mark Griffin

Steve & Susan Hauff
Boyd & Dody Hopkins
Mike & Cindy Huether
Pam & Steve Jansa
Steven & Becky Johnson
Thom & Becky Koehler
Dr. Eric & Jennifer Larson
Paul Lewis
John & Carol McGrath
Jeanne Mulvihill
Susan Parker
Marlene Rance
John & Kay Rozell
Rand & Mignonne Schwebach
Myrna Stanley
Diane Sturdevant
Dick & Kathy Sweetman
Gary & Grace Thimsen
Vance Thompson Vision

Karen & Paul Van Bockern
Dr. Bob & Marilyn Van Demark
Richard & Michelle Van Demark
Bud Walling
Robert Wallner
Thomas & Terry Welk
Thomas Wilka
Jay & Lian Zea
Joe & Kristen Zueger

Dennis Schmitz
Rick & Mary Weber

Clara Schreier
Timothy Dougherty &
Karen Schreier

Myrle Sederstrom
Raymond & Connie Gustafson

Genevieve Sinclair
Kent Sinclair

Richard Smith
Sharon Hess

Tom Smith
Sharon DeHaan
Glenda Stene

Patricia "Pat" Snyders
Lynne McCarthy

Merlyn Sommervold
Sherran Sommervold
Glenda Stene

Daniel "Dan" Spreacker
Michael & Gracia Gillespie

Lloyd Stucke
Allen & Gloria Brown

Cynthia "Cindy" Swenson
Merlin & Barbara Davis

Ernest "Ernie" Swier
Norma Wetrosky

Donna Belle Talty
Ronald Bourquin
Darla & Doug Crown
Thomas Estes
Melinda Gilbert
Randall & Elizabeth Hamburg
Shelley & Gary Hanzen
Cheryl & Michael Jedlicka

Marvin & Kathy Jobgen
Cheryl Kandaras Chapman
& Malcom Chapman
Earla & Gordon Karels
Jodie & Mike Lehrkamp
Holly Moser
Bruce & Kim Nearhood
Thomas & Nancy Nelson
Dennis & Linda Rabe
Theresa Schreiner
Stacey & Robert Sharp
George Twitero &
Shari West Twitero
Rick & Mary Weber

James "Tuney" Thuringer
Sharon DeHaan

Adell Twite
Bob & Cherie Goehring

Carol Uthe
Dean & Peg Gulbranson

Lowell Van Liere
Allen & Gloria Brown
LeRoy & Marie Koopman

Marion Vander Plaats
LeRoy & Marie Koopman

Gail VeldKamp
Allen & Gloria Brown

Dorothy Voight
John Voight

Lorene Weidenbach
Bob & Cherie Goehring

Patrick Wingen
Theresa Wingen

Kimberly Witte
Bob & Cherie Goehring

Lynn Zeller
Amy Ford

Simon Zeller
Gloria Olson

Jacquie Zweep
Jacquie's Fund
Jacquie's Fund

HONOR GIFTS

Gifts Given January 1–December 31, 2025

Honor gifts are given in gratitude, tribute, or celebration of family members, holidays, birthdays or special occasions. Honor gift card packets are available upon request. Due to space limits, only gifts of \$20+ are listed. Children’s Home Shelter for Family Safety gifts are noted in **bold** type.

Janet & Denis Andersen

Andrew & Heather Hewitt
Clara Jacob
Erica Krohn
Staci & James Kropuenske
Krystal Schoenbauer
Theresa Schreiner
Rick & Mary Weber

Julie Anderson Friesen

Mary Stock

Scott Barbour

Northwest Pipe Fittings Inc.
Employees

Tom Barnett

NestlUSA

Miles Beacom

Mr. & Mrs. Christopher Foskett

Gwendolyn Betz

Tammy Devine

Janna Boelke

Minnehaha County
Family Violence Council

Helen Boer

Peggy & David Nilsen

Brewer Family

Kathleen & Alan Haney
Patricia Schiro

Dr. Jeremy Cauwels

Alyssa Carlson
Mike Christianson
Elizabeth Groff
Jennifer Hight
Carrie Janssen
Dr. Roxana Lupu
Hailey Schepp
David Theige
Dr. Gary Timmerman

Sandra Chroman

PEO Chapter BD Sisterhood

CHS of SoDak Employees

past and present

Thomas & Lori Schuch

Comatose Friends

Kent & Marcia Martin

Heather Covrig

Epicosity

Dennis & Linda Daugaard

Tarri & Brad Minor

Matthew Dice

Carissa Dice

Kathleen Dovey

William & Jean Brennan

Therese Erickson

Connie & Gary Schickedanz

Marcella Gabel

Lois Lounsbery

Lee Gertsen

Amalia Flynn

Brienne Grossman

Amalia Flynn

Rob Hazard

TPF Software India Pvt Ltd

Tim & Judi Heiman

Steven Priest

Pam Jansa

Julie & Ryan Jansa

John & Sophia

Tommy & Marian Ibrahim

Sophia Johnson

Sensational Smiles Dentistry

Paul Kraft

Banner Associates Inc.

Tyler Lamoureux

**Southeastern Electric
Cooperative Inc.**

Lauren Lavin & Seth Wimmer

John & Kay Rozell

Nicholas Liesinger

Avera Heart Hospital &
North Central Heart Employees

Liz Lloyd

Kathryn Sawa

Lyric

Melissa Johnson

Vicki Madsen

Marlys Drewes

David Mickelson

US Bank

Marcy Moen

Sensational Smiles Dentistry

Kathleen Mueller

Avera Heart Hospital &
North Central Heart Employees

Jim & Kay Owen

Kelli & Anthony Gibson

Melanie Parsons

Staci & James Kropuenske

Mollie Potter

Modern Woodmen of America

Rian Quam

VanderRight

John Rozell

Julie & Curt Anderson Friesen
Michael & Diana Dufur-Day
Erv & DeMaris Nesheim
Donna & Richard Newton

John & Kay Rozell

Amy & Rob Trask

Al Schoeneman

Liz Lloyd

William Smith

Banner Associates Inc.

David Stach

Shirley Stach

Glen & Meagan Stach

Shirley Stach

Casey Steiner

Dan & Brenda Steiner

Caden Suess

Jamie Pedersen

Kim Suga

Amalia Flynn

Tori Travnicek

Mary Travnicek

Brenda Tvedt

Sensational Smiles Dentistry

Julie & Troy Van Dover

Shirley Stach

Tim Ward

Cheryl Mesler

Rick Weber

Darla & Doug Crown
Gina & Jack Hopkins
Shirley & Mike Leimbach
Pamela Madsen
Tim & Diane Meyer
William & Jill Schuneman
Hugh & RuthAnn Venrick

Linda Wells

Connie & Gary Schickedanz

Brian, Petra, Zachary

& Reina Wilson
Peary Wilson

AFFILIATED FUNDRAISING EVENTS



MORE PARTNER FUNDRAISERS

Children’s Home Shelter for Family Safety fundraising events are noted in **BOLD**.

- Those Guys ABATE–Poker Run \$15,606
- Red Rock Bar & Grill, partners and friends
Bike Nights and more \$15,442
- Knights of Columbus Bowling Tournament \$5,500
- Neugebauer’s Jewelry \$5,000
- Gage Brothers Concrete–
Employee Fundraising \$3,795
- Black Hills Wind and Fire \$3,253
- Hy-Vee Operation Helpful Smile \$1,236
- **Hy-Vee Operation Helpful Smile \$1,164**
- Pizza Ranch–East 10th Street, Sioux Falls
and Brandon “National Pizza Day” \$534
- **Security Savings Bank \$300**
- Sentinel Credit Union \$250
- **Pomegranate Market \$222**

12th Annual
**KIEFFER
SANITATION**

TRASH CAN OPEN

Event Date:

June 6, 2025

The Golf Club at Red Rock, Rapid City

NET PROCEEDS: \$39,794

DESIGNATION:

Children's Home Society
Rapid City Campus

**THANK YOU TO OUR DONORS,
SPONSORS AND VOLUNTEERS!**

Title Sponsors & Hosts

Kieffer Sanitation
Waste Connections

Eagle Sponsors

Black Hills Rubble
Management &
Boom Construction
TNT Homes &
Construction LLC

Birdie Sponsors

Admiral Beverage
Corporation
Buffalo Wild Wings
Pac-Tech
Rehrig Pacific Company

Hole Prize Sponsor

Central States Fair

Social Sponsor

Hills Septic Service

Par Sponsors

A & B Business
Solutions
EquipmentShare
Floyd's Truck Center
Mead Lumber/
Andersen Windows • Doors
Olson's Towing
Ro Sham Bo Creative
Zeisler Construction

Ice Sponsor

Arctic Glacier

**Kieffer Sanitation
Trash Can Open
Planning Committee**

Seth Green, Chairperson
Donald Clarke
Kara Flynn
Heather Hoeye
Jennifer Nielsen
Dereck Parce
Theresa Schreiner
Abby Sharp

36TH ANNUAL
Rotary Club of Rapid City Rushmore

**GOLF
TOURNAMENT**

Event Date:

JULY 28, 2025

Arrowhead Country Club

NET PROCEEDS:

\$94,931

DESIGNATION:

Children's Home Society
Rapid City Campus



**THANK YOU TO OUR
DONORS, SPONSORS
AND VOLUNTEERS!**

Title Sponsor & Host

Rotary Club of Rapid City Rushmore

Presenting Sponsor

Gustafson Builders/
Heavy Constructors Inc.

Dinner Sponsor

RESPEC

Lunch Sponsor

The UPS Store

Cart Sponsor

Dave Schmidt Agency/
Farmers Insurance

Golfer Gift Sponsor

Hills Septic Service

Flight Sponsor

TruStage

Mulligan Sponsor

Gregg Fullerton
State Farm Agencies

Diamond Sponsors

Action Mechanical Inc.
Black Hills Animal Hospital
Black Hills Shooters Supply
Costello Porter Law Firm
Dakota RV and Diesel Machinery Inc.
Dr. Stuart Fromm, MD/
Black Hills Orthopedic
& Spine Center
HVAC Elements
Marsh McLennan Agency
Midwest Solutions Inc.
Monument Health
Seacrest Wealth Management
Sentinel Credit Union

Gold Sponsors

Big Dog Excavation LLC
Black Hills Community Bank
CARSTAR Collision Center
ForeverLawn Black Hills
Gateway Autoplex
Ketel Thorstenson LLP
Neugebauer's Jewelry,
Design & Service
Northwest Pipe Fittings Inc.
Omnitech Inc.
Rotary Club of Rapid City Rushmore
Rushmore Skies Retreat

Hole Sponsors

Charles & Jill Arbeiter
Avid4 Engineering
Black Hills Animal Hospital
Black Hills Federal Credit Union
Black Hills Tire
Buckingham's ATA Martial Arts
& Karate for Kids
Butler Machinery
Conrad's Big C Electric
DGR Engineering
David & Kimberly Dolan
Edward Jones, Kyle Bargmann
First Western Federal
Savings Bank
ForeverLawn Black Hills
Kieffer Family Dental
LEI
Pioneer Bank & Trust
Security First Bank
The Skin Institute at Rapid City
Medical Center LLP
White's Queen City Motors

Rotary Golf Committee

Jeffrey A. Meyer,
Chairperson
Bob Baker
Kim Baker
Scott Barbour
Kyle Bargmann
Mark Barry
Mark Crosswait
Darla Crown
David Dolan
Rick Edelen
David Ellenbecker

Kara Flynn
Dana Foreman
Dr. Mike Fuller
Tiffany Gikling
Roger Heacock
Heather Hoeye
Ron Jeffries
Jerome Johnson
Janet Kahler
Jeff Kingsbury
Doug Lind
Bruce Nearhood

Debra Niemi
Theresa Schreiner
Bo Seacrest
Abby Sharp
Larry Stevens
Pat Sutliff
Dr. Willis Sutliff
Tyler Trevillyan
Dr. George Twitero
Shari West Twitero
Marcia Whiting



30th Annual Caring For The Kids

This event featured a celebration banquet, car raffle, and silent and live auctions to benefit Children's Home Society.

Event Date:
Sunday, August 3, 2025



NET PROCEEDS:
\$415,659

DESIGNATION:
CHS Program Support

CELEBRATING
30
YEARS

THANK YOU TO OUR DONORS AND SPONSORS!

Presenting Sponsor
PIPESTONE

Challenge Donor
Jeff & Michelle Thue

Car Sponsor
Schulte Subaru

Dinner Sponsor
POET

Social Hour Sponsor
First PREMIER Bank/
PREMIER Bankcard

Production Sponsor
Graham Tire

Media Sponsors
KELOLAND Media Group
Midco
Midwest Communications

Wish Wall Challenge Donor
Dakota Video + Post Productions

Hope Sponsors
Avera (2)
Citi
CorTrust Bank
Dacotah Bank
Daugaard for South Dakota

First National Bank of Sioux Falls
HUB International
Kwik Trip
Waterbury Heating & Cooling

Heart Sponsors
American Bank and Trust
Cimarron Label
CNA Surety
Eide Bailly
Lloyd Companies
Maguire Iron Inc.
MarketBeat
Marsh & McLennan Agency LLC
Novak Sanitary Service

Healing Sponsors
Barrow Orthodontics
Boen & Associates Inc.
Paul & Mary Ellen Connelly
Dacotah Insurance
Davenport, Evans, Hurwitz
& Smith LLP
Dr. David & Julie Ermer
First Bank & Trust
Skinner Financial Services

Table Sponsors
A&B Business Solutions
Acucare Physical Therapy Ltd.
Rick & Holly Brunick

Cadwell, Sanford, Deibert
& Garry LLP
CrossCountry Mortgage
Tim Dougherty & Karen Schreier
Envive Chiropractic
Tim & Somboon Hamel
Hewitt Family
Interstate Office Products
Kris & Katie Kløver
Levo Credit Union
Ellie Marshman Mutch
Dave & Becky Nelson
Oh My Cupcakes!
Pride Neon Sign Solutions
Principal Financial Group
Purple Wealth LLC
John & Kay Rozell
Showplace Cabinetry
Sioux Valley Optimist Club
Stan Graber Financial Services
Bobby & Genae Sundby
Van Horn Financial Services
Veritiv
Voyage Credit Union
Winsupply of W Sioux Falls
Plumbing & Electrical
Merle & Cecile Wollman
Workplace Marketing
Insurance Advisors
Xcel Energy

Signage Sponsor
FastSigns

Printing Sponsor
Sisson Printing Inc.

Beverage Sponsor
Coca-Cola

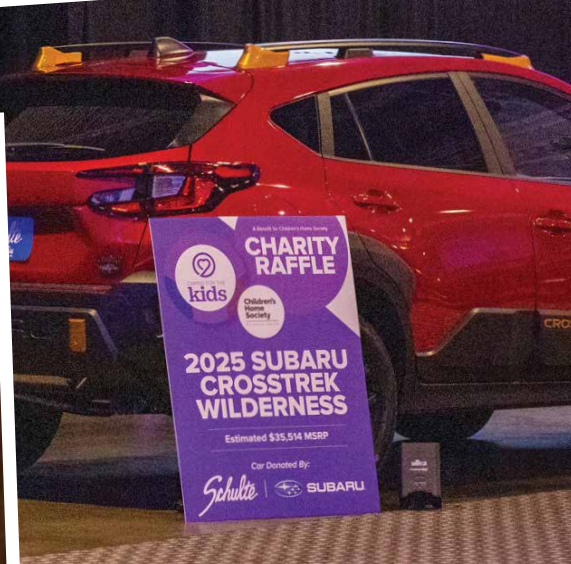
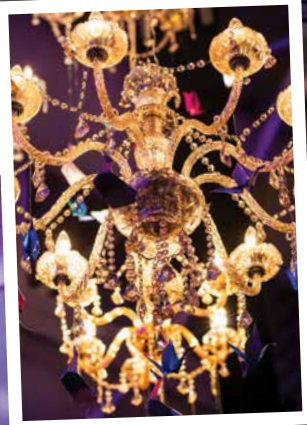
Live Auction Donors
A&B Business
Catering By Cleavers
First PREMIER Bank/
PREMIER Bankcard
Michelle & Paul† Lavallee
Loving School Middle
School students &
Teacher Rylee Lehmkuhl
Western Horizons Hot Air Balloons
Dr. Brian & Petra Wilson

Silent Auction Donors
Canopy by Hilton
Carsley Golf
Crunch Fitness
Dick's Sporting Goods
Gunderson's Jewelers
JJ's Wine, Spirits & Cigars
KT Artistry
Landscape Garden Centers
Massage Envy Sioux Falls
Natural Grocers

Nyberg's Ace
Renner Corner Meats
Ross & Lynn Plucker
Sanford International
Scheels
Science Nutrition
Sioux Falls Food Co-op
Sioux Falls Golf
Spa on Phillips
Steel District Restaurant Hospitality
Tim Fitz
Walt & Jan Bones

Event Support
Auctioneers – Dean Gulbranson,
Jim Woster and Terry Brick
Audio Connections –
Jeff Engen & Team
Jer Events
Sioux Falls Convention Center





THE MAGIC OF GIVING AND A LEGACY OF BIRTHDAY SMILES



A toy store is more than shelves filled with games and stuffed animals. It fuels creativity, sparks imagination and turns ordinary days into something special. For 18 years, Kidtopia created that kind of magic for children across Sioux Falls. But within its bright aisles, something even more meaningful took place. Each month, Kidtopia helped make birthdays brighter for every child at Sioux Falls Children's Home—reminding kids they were seen, valued and special.

For many of the children served at Children's Home Society (CHS), birthdays have never come with a wrapped gift or a celebration of their own. Some have never received a birthday present before. Through a simple but powerful idea, Sheryl Nelson made sure that changed.

"Those kids need to feel special too," said Sheryl. "That's how I wanted to help."

A visit that left an impression

Sheryl first encountered CHS while serving as a volunteer chaperone on her daughter's kindergarten field trip. That single visit left a lasting impression.

"It really impacted me. It opened my eyes to a lot of things with the kids and their struggles," she said. "That was always in the back of my mind."

In 2007, Sheryl applied for a job at a new toy store in town—Kidtopia. Six months later, she approached the owners about buying the business. They agreed, and she took over on March 1, 2008.

Owning the store gave her the opportunity to act on what had been weighing on her heart.

"I was looking for something we could do, and of course, with toys, it's kids,"

Sheryl said. "Being a store owner, I felt it was my responsibility to help the community in some way."

"I thought, you know what? Those kids at CHS need to feel special, too," she added.

Each month, CHS staff sent Sheryl the names, ages, and, in recent years, gift ideas for children with upcoming birthdays. She posted the names and ages on a board in the store and invited customers to shop for a child. She suggested gifts in the \$35 to \$40 range and offered a 20% discount.

"Some people didn't want to shop, so they'd just give us \$20 or \$50," she said. "Sometimes, a few customers would give \$100. It was just amazing!"

If toys were not bought by the end of the month, Sheryl stepped in.

"Most of the time we got the gifts we needed," she said. "But if we didn't, I never wanted any child to go without a birthday present."

Sheryl also shared the drive online. Toy store owners she knew from the East Coast and sales representatives in Minneapolis sent money to support the effort.

Memories to last a lifetime

When CHS staff began including gift ideas, the requests ranged from predictable to unforgettable. Legos topped many lists. One request, however, still stands out to Sheryl: salami.

"We saw salami on this little boy's list and were dying of laughter," she said. "My employees asked, 'Are you going to get him salami, Sheryl?' I said, 'Heck yes. I've got to go get him some salami.' That's something exactly like what my son would've written."

That afternoon, Sheryl walked across the street and searched the aisles for the needed salami.

"The salami was secured," she said, laughing.

Over the years, Kidtopia grew, moved and changed. Through every transition, the birthday drive continued.

"Kids are the infrastructure of our society," said Sheryl. "If you take care of them and let them know they're loved and needed, they're going to want to be a good part of society."

It's estimated that over 18 years, the birthday drive resulted in nearly \$50,000 in gifts donated to children at Sioux Falls Children's Home, a reflection of Sheryl's dedication and the generosity of the community.



Honoring 18 years of kindness

When Faron Lais, Volunteer Coordinator at CHS, learned that Sheryl was closing Kidtopia, she wanted to make sure the community recognized Sheryl's kindness.

She discovered the SIOUXPERHERO program through the Sioux Falls City Council and immediately submitted a nomination.

“For 18 years, Sheryl has been on a heartfelt mission to fulfill the birthday wishes of children at Sioux Falls Children’s Home. Each month, without fail, she has ensured that every child experienced the joy of receiving a gift on their special day, bringing smiles to faces that might otherwise be disappointed. When Kidtopia didn’t have the exact toy or game that a child dreamed of, Sheryl would reach into her own pocket to purchase their desired item. Her extraordinary dedication is a testament to the joy and hope she brings, and it truly deserves to be celebrated.”

—Faron Lais, Nomination Excerpt

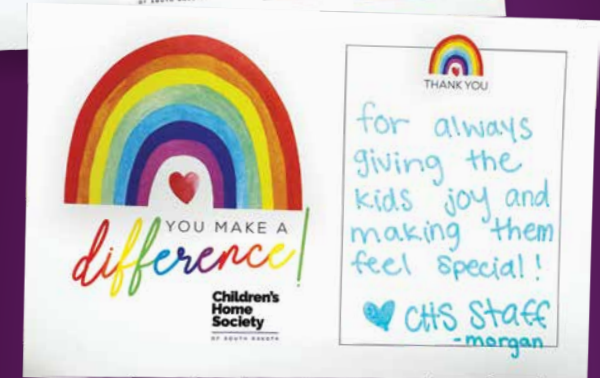


For 18 years, Kidtopia owner Sheryl Nelson made sure every child at Sioux Falls Children’s Home received a birthday gift. **Photo:** Sheryl with CHS Volunteer/Development Coordinator Faron Lais.

On January 20, 2026, Sheryl received the SIOUXPERHERO award at a city council meeting.

After the meeting, Faron handed her a manila envelope filled with handwritten thank you notes and drawings from the children whose birthdays she helped celebrate.

“As I read the letters and looked at the drawings, I got emotional thinking about all those kids,” said Sheryl.
“Those mean so much to me. Every single one of them.”



The next chapter of generosity

For the children at CHS, birthdays will continue to be celebrated. Another local toy store, Child’s Play Toys, has stepped forward to carry on the tradition and make sure every child still feels remembered on their birthday.

In a moment that felt meant to be, a new chapter began—one built on the same spirit of generosity that Sheryl nurtured for nearly two decades. Now, Sheryl has closed Kidtopia and is preparing to move to Minneapolis to be closer to her youngest daughter. She looks forward to future grandchildren and time spent with family.

Sheryl plans to take the notes and drawings with her in what she calls her “special box,” alongside treasured mementos from her own kids. It’s her way of remembering 18 years’ worth of children who needed kindness and love—children who will always hold a special place in her heart.



City Council member Richard Thomason and Sioux Falls Mayor Paul TenHaken present Sheryl with the SIOUXPERHERO award.

19TH ANNUAL JON CRANE CHS BENEFIT AUCTION

Arrowhead Country Club, Rapid City

Event Date:

Friday, October 3, 2025

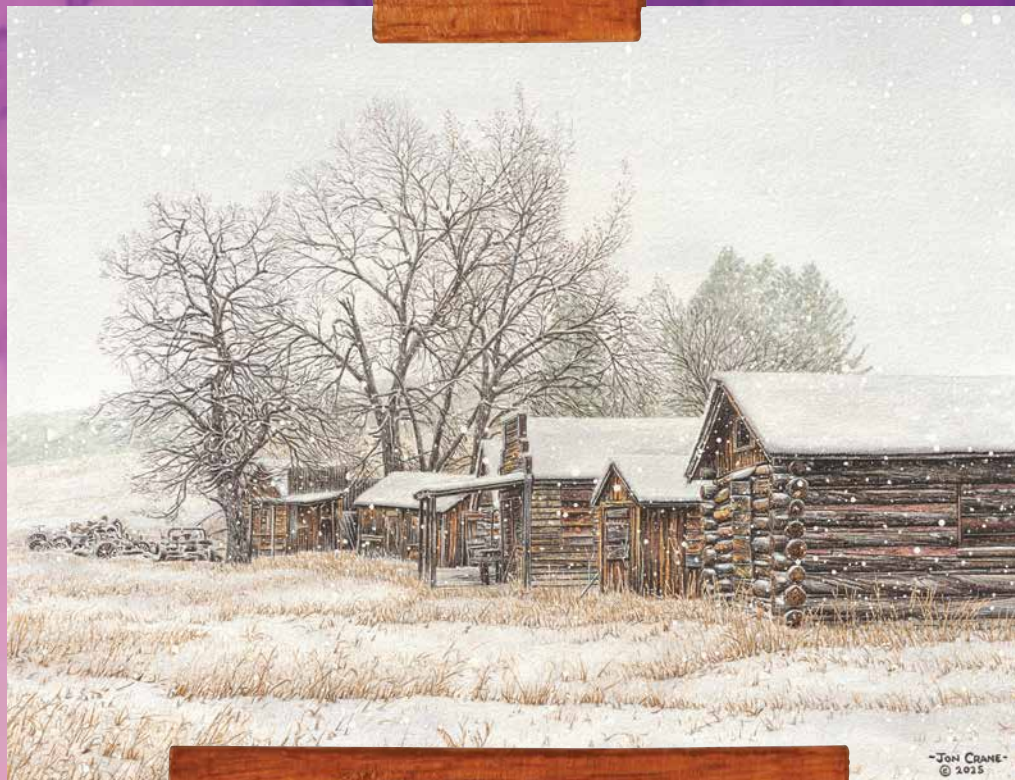
Event founders, Jon and Gail Crane, Denny McKay, and Richard and Rose DuBois, had a vision to showcase the region's top artists, raise funds for Children's Home Society and create opportunities for live-auction artists to mentor, encourage and teach art to children at Black Hills Children's Home.

NET PROCEEDS:

\$263,122

DESIGNATION:

Children's Home Society
Rapid City Campus



THANK YOU TO OUR FOUNDERS, SPONSORS, ARTISTS, DONORS AND VOLUNTEERS!

Leonardo Da Vinci Sponsors

Janet & Deonne Kahler
Jack & Vianne Kucera
Monument Health

Picasso Sponsor

Myles & Jeanette Kennedy

Vincent Van Gogh Sponsors

Mike, Diana & Corrie Day
DeMaris & Erv Nesheim

Botticelli Sponsor

Lampert Properties

Beverage Sponsors

A & B Business Solutions/
Dennis & Lizette Aanenson
Admiral Beverage
Corporation

Media Sponsors

Midco
The HomeSlice Group

Event Committee

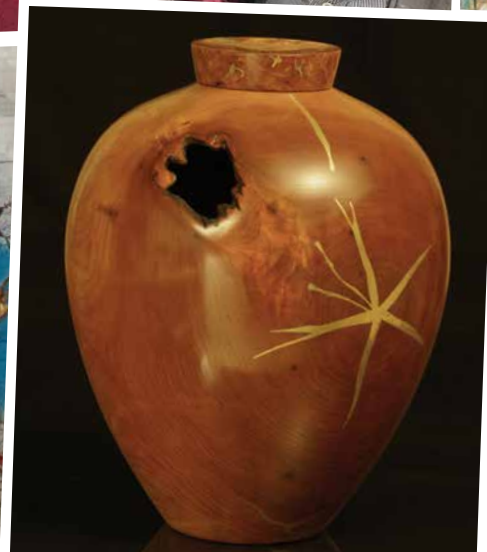
Jon Crane
Gail Crane
Lori Deurmier
Diana Dufur-Day
Kara Flynn
Heather Hoeye
Lafawn Janis
Adam Karrels
Denny McKay
Kim McKay
Theresa Schreiner
Abby Sharp
Melissa Wood

FEATURED ORIGINAL ARTISTS

| | |
|--|---------------------|
| Nancy Ashley | Wade Patton |
| Jon Crane | Angela Marie Poches |
| Richard DuBois | Gwen Ray |
| (Donated in his memory by his family) | Ginny Reinicke* |
| Jerry Green | Kathy Sigle |
| Bonnie Marion | Gene Swallow |
| Sarah S. Miller | Moses Stutzman |
| Donald F. Montileaux | Mike Wolforth |
| Mark Mordhorst | Melissa Wood* |
| Joanne Nelson | Nora Wosepka |

*Dream Team Mentor Artists for children at Black Hills Children's Home







GIFT WRAP BOOTH & HOPE FOR THE HOLIDAYS TOY DRIVE

Event Date:
Nov. 28–Dec. 24, 2025



NET PROCEEDS:

\$23,636

DESIGNATION:
Shelter for Family Safety
Program Support

**Children's
Home
Society**

OF SOUTH DAKOTA

THANKS FOR YOUR SUPPORT!

Results

- Volunteers: **646**
- Volunteer hours: **1,793.50**
- Gifts wrapped: **4,939**
- **812** gifts were collected during our Hope for the Holidays Toy Drive for children's birthday and Christmas presents

giftwrapbooth.chssd.org

Host

The Empire Mall

Media Partners

Dakota News Now
Midco
Results Townsquare Media

Other Event Support

Xcel Energy

Volunteer Leaders

Thanna Goff
Kaylee Hatlewick
Bill Hennrich
Samantha Hill
Elizabeth Hjelm
Laura Hjelm
Laura Jonio
Kristi McKinney
Jen Stahl
Randy VanDeVendel

Shelter for Family Safety



This annual fundraiser in Sioux Falls is an opportunity to introduce and reconnect volunteers and donors to Shelter during the holiday season.

WE STAND FOR GOOD

out

CHS Employee Recognition

Children's Home Society

OF SOUTH DAKOTA



EMPLOYEE OF THE YEAR

Sarah Crager, Team Coordinator
Sioux Falls Children's Home

Each year, CHS selects one staff member as Employee of the Year, and a staff member with less than two years of service as Rising Star of the Year. Another award, for a first-year employee at each of our three campuses, was added this year—the Spark of Hope Award.

Nominations come from CHS's Stand Out for Good program, which allows staff, clients, volunteers, donors and community members to recognize employees. A volunteer judging committee from our Board of Directors (*thank you Carolyn Stavenger, Melissa Johnson and Steve Flanery*) selected the winners shown above.

RISING STAR OF THE YEAR

Casey Steiner, Nurse
Sioux Falls Children's Home

CHS presents awards to employees at each campus who best embody our values of:



We are better together.



We choose kindness.



We are tenacious.

We also give years of service awards to employees at three years, five years and in multiples of five thereafter.

Stand Out for Good Award Winners

Rapid City Campus

SPARK OF HOPE:

Ruth Torala, Business Office Coordinator

BETTER TOGETHER:

Steve Feild, Unit Supervisor

KINDNESS:

Shelbi Kaul, Teacher

TENACITY:

Jerry Bamsey, Facilities Supervisor

Sioux Falls Campus

SPARK OF HOPE:

Kylee Rach, Residential Youth Counselor

BETTER TOGETHER:

Kristopher Carter, Teacher Assistant

KINDNESS:

Ericka Bohle, Loving School Principal

TENACITY:

Katelynn Beldin,
Residential Program Director

Shelter for Family Safety

SPARK OF HOPE:

Audrey Pirtle, Crisis Advocate

BETTER TOGETHER:

Paola Rodriguez, Crisis Advocate

KINDNESS:

Linn Nelson, Crisis Advocate

TENACITY:

Janice Lee, Business Manager



To recognize a CHS employee any time of the year, scan QR code or go to chssd.org/standforgood

**CHILDREN'S HOME SOCIETY
OF SOUTH DAKOTA**

P.O. BOX 1749
SIOUX FALLS, SD 57101-1749

ADDRESS SERVICE REQUESTED

Nonprofit
Organization
U.S. POSTAGE
PAID
SIOUX FALLS, SD
PERMIT #437

Thank you for your support!

This report honors and recognizes the many friends of Children's Home Society. Our intention is to be inclusive and accurate.

Report any corrections to:

Sarah Nichols

P.O. Box 1749, Sioux Falls, SD 57101-1749
605.965.3138 • sarah.nichols@chssd.org



As a matter of good stewardship, we try to keep the size and cost of this publication to a minimum. There is a very lengthy list of \$1–\$99 gifts that is not printed. Please know we are just as grateful for the generosity of our unlisted friends!

BLACK HILLS

BLACK HILLS CHILDREN'S HOME

Residential Treatment and School

605.343.5422 | 24100 S. Rockerville Road, Rapid City, SD 57702

OUTPATIENT MENTAL HEALTH SERVICES

Therapy (Individual, Family, Group) • Psychiatry • Case Management

605.343.2811 | 5301 Mount Rushmore Road, Rapid City, SD 57701

CHILDREN'S HOME CHILD ADVOCACY CENTER • PREVENTION

Forensic Interviews, Child Abuse Prevention, Training and Education

605.716.1628 | 5301 Mount Rushmore Road, Rapid City, SD 57701

THERAPEUTIC FOSTER CARE • WENDY'S WONDERFUL KIDS

Foster Care and Adoption

605.343.2811 | 5301 Mount Rushmore Road, Rapid City, SD 57701

SIOUX FALLS

BRIGHT START

Nurse Home Visitation

605.274.0233 | 113 N. St. Paul Avenue, Sioux Falls, SD 57103

CHILDREN'S HOME SHELTER FOR FAMILY SAFETY

Domestic Violence Shelter and Services • Emergency Shelter for Children

605.338.0116 | 113 N. St. Paul Avenue, Sioux Falls, SD 57103

**OUTPATIENT MENTAL HEALTH SERVICES
THERAPEUTIC FOSTER CARE • WENDY'S WONDERFUL KIDS**

Therapy (Individual, Family, Group) • Foster Care and Adoption

605.334.6004 | 4402 E. 3rd Street, Sioux Falls, SD 57103

SIOUX FALLS CHILDREN'S HOME

Residential Treatment and School

605.334.6004 | 801 N. Sycamore Avenue, Sioux Falls, SD 57110



CHS is accredited by Council on Accreditation (COA) and licensed by the South Dakota Department of Social Services.

Privacy Policy: To protect the privacy of the children and families we serve, it is our practice (unless otherwise noted) to use names and photos that represent our stories and ensure confidentiality.

VISIT US AT CHSSD.ORG